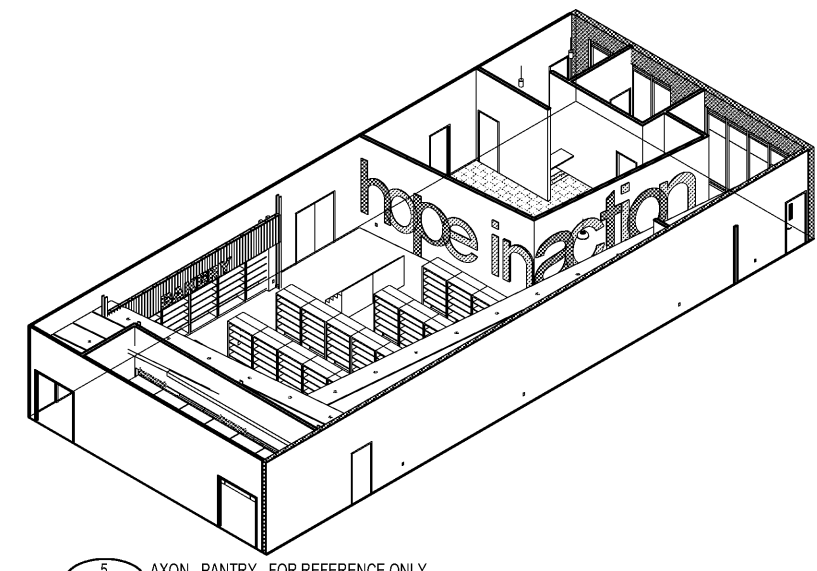


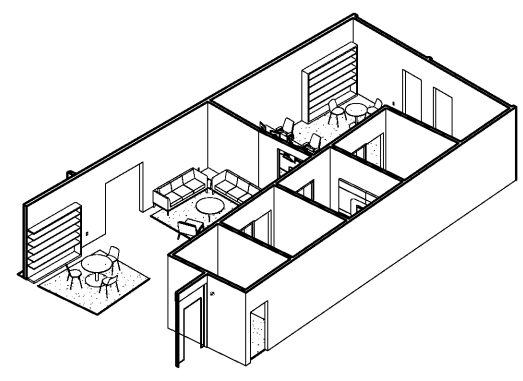


**SCOPE DOCUMENTS**  
The Contract Documents Issued for (Conceptual Design, Schematic Design, Design Development, Partial Construction Documents or Other Issuance up to Issued for Construction) are intended to be at that level of completion and as such, may be neither complete nor coordinated. The (Construction Manager, Contractor, Design/Builder) is responsible for complete and coordinated pricing (and execution) of the Work, and shall include items necessary for the proper execution and completion of the Work, as shown, specified, reasonably inferred or required for a complete Project. For Work of obligated designs, systems, assemblies, components and materials shall comply with national, state and local code requirements. The (Construction Manager, Contractor, Design/Builder) shall inform the Owner and Architect, in timely fashion, of any discovered omissions, inconsistencies or errors in the Contract Documents.

ISSUANCES		
No.	Drawing Issue Description	Date
	INTERIORS PRICING SET	08/13/19



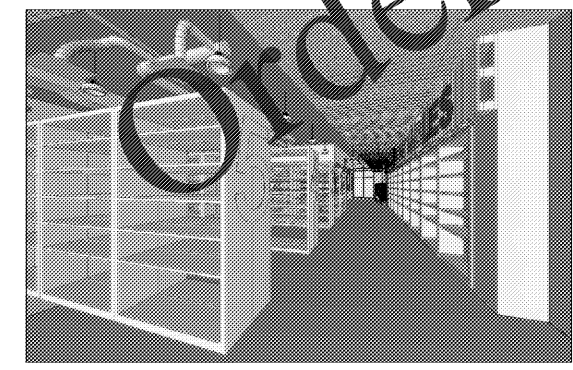
5 AXON - PANTRY - FOR REFERENCE ONLY  
SCALE: 1/2"=1'-0"



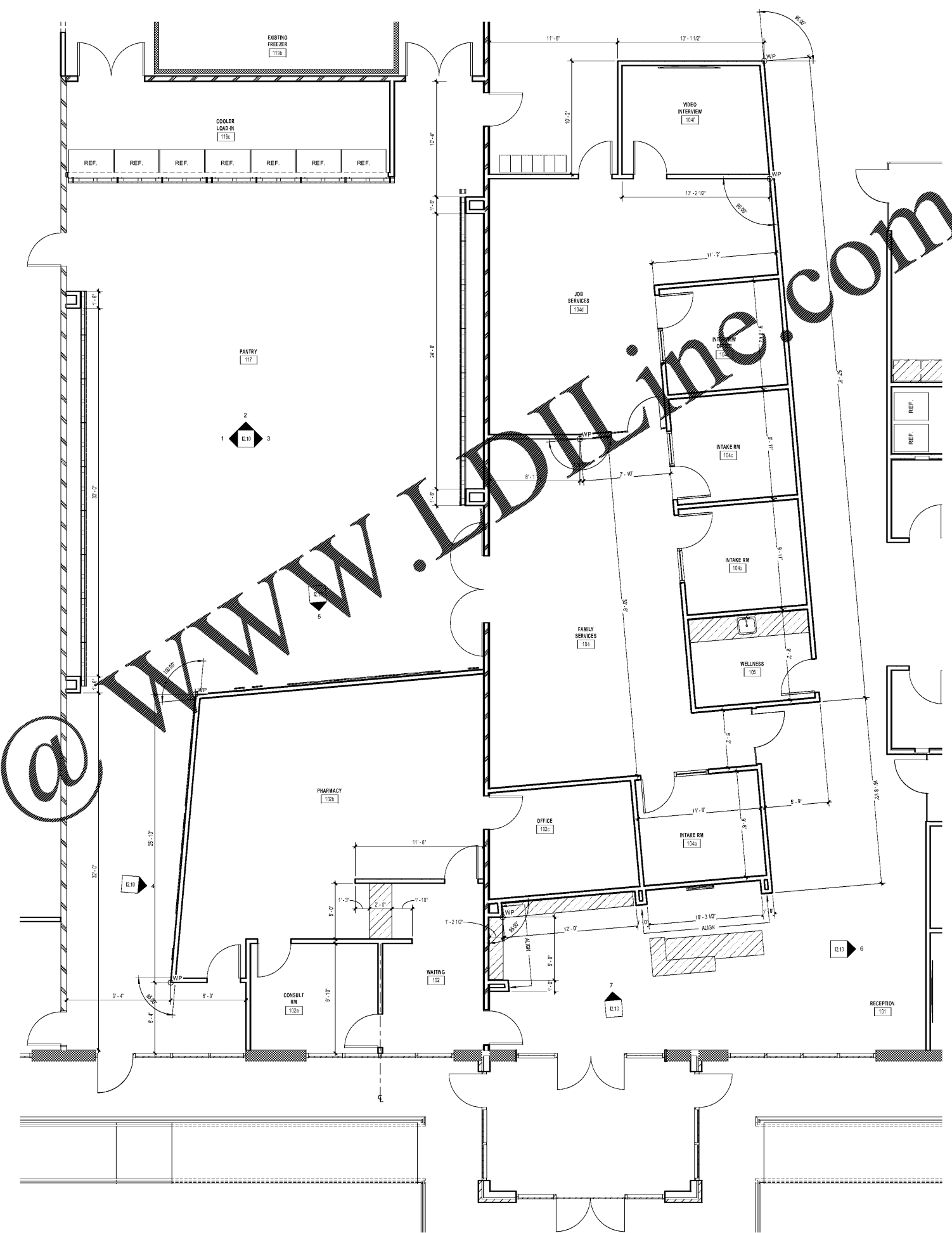
4 AXON - FAMILY & JOBS SERVICES - FOR REFERENCE ONLY  
SCALE: 1/2"=1'-0"



3 RECEPTION  
SCALE: 1/2"=1'-0"



2 PANTRY  
SCALE: 1/2"=1'-0"



1 ENLARGED PLAN - PANTRY & FAMILY SERVICES  
SCALE: 1/4" = 1'-0"

PROJECT NUMBER: 20180316 PROJ: ST VINCENT DE PAUL GEORGIA COUNCIL HEADQUARTERS  
SHEET NUMBER: 12.01 - ENLARGED PLANS AND AXONOMETRIC VIEWS - SERVICES  
M:\2018\20180316\7 Drawings\12.01 Revit\Users\j0180316\_2017\_SVDP\_07302019\_baird02244.rvt  
8/14/2019 10:39:39 AM

Order Plans @

WWW.IDLINE.COM

St Vincent de Paul Georgia  
Council Headquarters

2050 Chamblee Tucker Rd  
Unit C D & E  
Chamblee, GA 30314

St Vincent de Paul Georgia

ENLARGED PLANS AND  
AXONOMETRIC VIEWS -  
SERVICES

BRIAN PARKER Principal Designer	20180316
GHEWETH KOVAR Project Manager	08/13/2019
M.S. & M.B. Project Architect	
WIVIAN MOGWANJA Staff Architect	

12.01