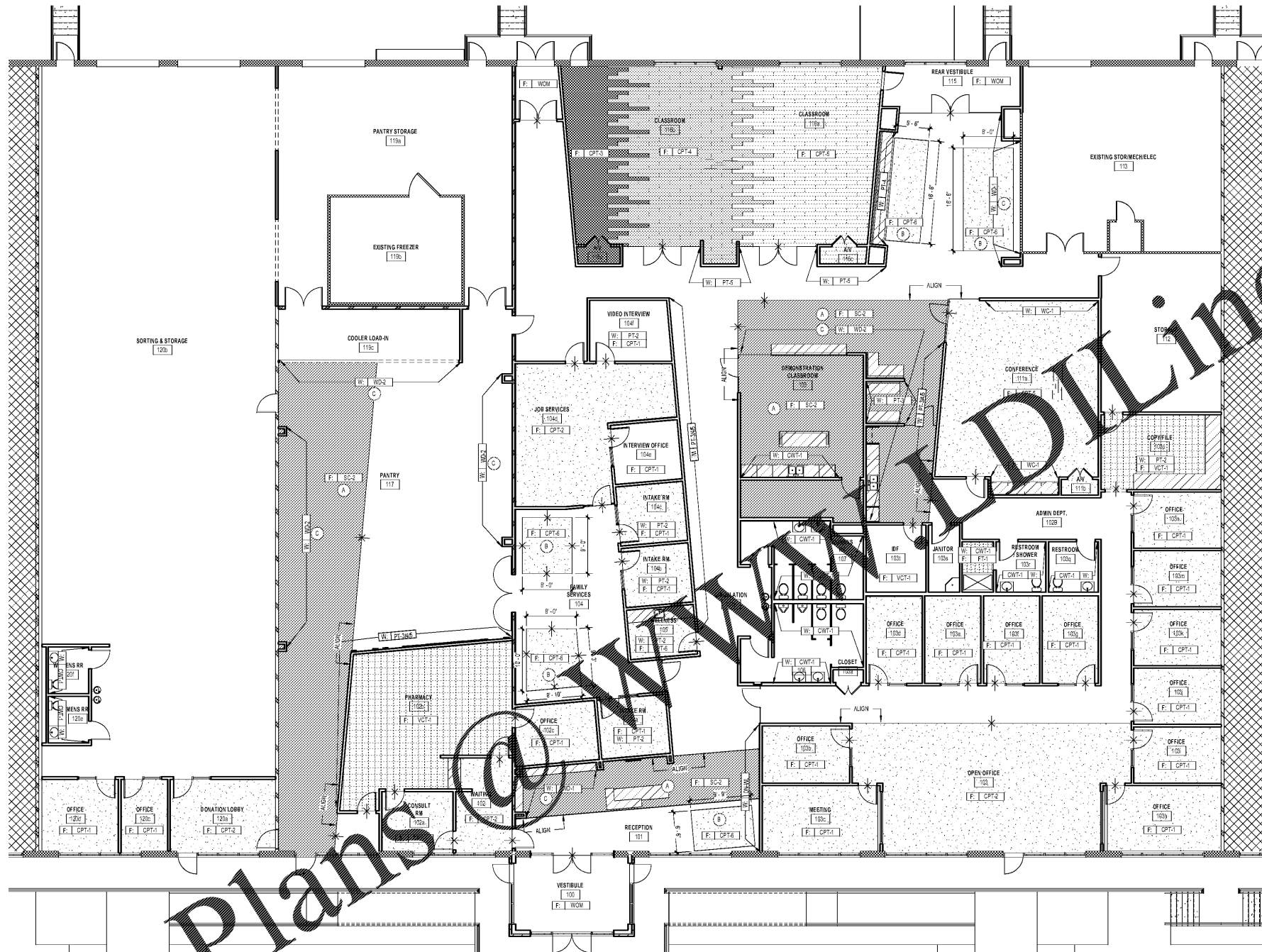




**SCOPE DOCUMENTS**

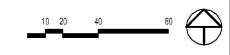
The Contract Documents Issued for (Conceptual Design, Schematic Design, Design Development, Partial Construction Documents or Other Issuance up to Issued for Construction) are intended to be at that level of completion and as such, may be neither complete nor coordinated. The (Construction Manager, Contractor, Design/Builder) is responsible for complete and coordinated pricing (and execution) of the Work, and shall include items necessary for the proper execution and completion of the Work, as shown, specified, reasonably inferred or required for a complete Project. For Work of omitted designs, systems, assemblies, components and materials shall comply with national, state and local code requirements. The (Construction Manager, Contractor, Design/Builder) shall inform the Owner and Architect, in timely fashion, of any discovered omissions, inconsistencies or errors in the Contract Documents.

ISSUANCES		
No.	Drawing Issue Description	Date
1	INTERIORS PRICING SET	08/13/19



Order Plans @ www.dline.com

1 FINISH PLAN  
11.13  
SCALE: 1/8" = 1'-0"



St Vincent de Paul Georgia  
Council Headquarters

2050 Chamblee Tucker Rd  
Unit C D & E  
Chamblee, GA 30314

St Vincent de Paul Georgia

**FINISH PLAN**

BRIAN PARKER Principal Designer	20180316
GWENETH KOVAR Project Manager	08/13/2019
M.S. & M.B. Staff Architect	DATE
WIVIAN MOGWANJA Staff Architect	

11.13

FINISH MATERIAL LEGEND						
CODE	DESCRIPTION	MANUFACTURER	PRODUCT NAME	MODEL NO.	FINISH / COLOR	LOCATION
CPT-1	CARPET	INTERFACE	AERIAL-AE310	1388202500	104826 IRON	TYP. OFFICES
CPT-2	CARPET	INTERFACE	AERIAL-AE312	1389102500	105410	OPEN OFFICE
CPT-3	CARPET	INTERFACE	AERIAL-AE317	183270AK00	105829 AZURINE	CLASSROOM
CPT-4	CARPET	INTERFACE	AERIAL-AE315	18230AK00	105816 GRANITE AZURE	CLASSROOM
CPT-6	CARPET	INTERFACE	AERIAL-AE311	138830AK00	104688 MIST	CLASSROOM
CPT-6	CARPET	INTERFACE				RUG LOCATIONS
CPT-7	CARPET	INTERFACE	AERIAL-AE311	138830AK00	105826 GRANITE	BOARD ROOM
CT-1	CERAMIC TILE					
CWT-1	CERAMIC WALL TILE	CERAMIC TECHNICS	BASE STUDIO HUDSON		WHITE GLOSSY	RESTROOMS & BREAK ROOM
FT-1	FLOOR TILE	CERAMIC TECHNICS	BASE STUDIO URBAN	27X27 MOSAIC	BLACK	SHOWER @ RESTROOMS
OSB-1	OSB BOARD	TBD	OSB BOARD			RECEPTION DESK
PLAM-1	PLASTIC LAMINATE	WILSONART	MISSION MAPLE	7900-38	FINE VELVET FINISH	TYPICAL CABINETS FACES
PLAM-2	PLASTIC LAMINATE	WILSONART	BLACK	1595-60	MATTE FINISH	COUNTERTOP @ COPY / FILE MILLWORK

FINISH MATERIAL LEGEND						
CODE	DESCRIPTION	MANUFACTURER	PRODUCT NAME	MODEL NO.	FINISH / COLOR	LOCATION
PT-1	PAINT	SHERWIN WILLIAMS				TYP. PAINT
PT-2	PAINT	SHERWIN WILLIAMS				ACCENT PAINT
PT-3	PAINT	SHERWIN WILLIAMS				ACCENT PAINT
PT-4	PAINT	SHERWIN WILLIAMS				ACCENT PAINT
PT-5	PAINT	SHERWIN WILLIAMS				ACCENT PAINT
RB-1	RUBBER BASE	JOHNSONITE	WANDALAY	08	ICICLE	TYP. BASE
BC-1	SEALED CONCRETE	SCOFIELD	FORMULA ONE LIQUID DYE	G388	SOFT GRAY	TYP. CONCRETE
BC-2	SEALED CONCRETE	SCOFIELD	FORMULA ONE LIQUID DYE	0610	BLACK	ACCENT CONCRETE
SB-1	SOLID SURFACE	CORIAN	CORIAN QUARTZ			COUNTER TOP @ BASE MILLWORK
UP-1	UPHOLSTERY	ARCOM	EVERSON	AC-8383	WHISAT 14	UPHOLSTERY @ BANQUETTES
UP-2	UPHOLSTERY	ARCOM	PRISM	AC-80212	BEACH 3	UPHOLSTERY @ BANQUETTES
UP-3	UPHOLSTERY	CARBON 66	QUARTZ		8434-3	UPHOLSTERY @ BANQUETTES
VCT-1	VINYL COMPOSITE TILE	ARMSTRONG	VCT SERIES	50208		PHARMACY
WDC-1	WALL COVERING	WDC	JANUS AUGUSTA	8888074130	BIRD'S EYE NORDIC ICE	BOARD ROOM
WD-1	WOOD	TBD	PALLET WOOD			GATHERING
WD-2	WOOD	TBD	PALLET WOOD			PANTRY & RECEPTION

**ADDITION AND DEDUCTION ALTERNATIVE NOTES**

1. EXPOSED CONCRETE FLOORS TO BE GROUND AND POLISHED TO 200 GRIT AND SEALED TO REMAIN EXPOSED.

**FINISH PLAN GENERAL NOTES**

1. ALL FLOORS TO BE POLISHED AND SEALED CONCRETE, U.N.O.

2. EXPOSED CONCRETE FLOORS TO BE GROUND AND POLISHED TO 100 GRIT AND SEALED TO REMAIN EXPOSED.

3. ALL WALLS ARE PT-1, U.N.O.

**FINISH PLAN KEY NOTES**

A. PORTION OF CONCRETE FLOOR TO BE ETCHED, STAINED, AND POLISHED

B. AREA RUG TO BE LAID OVER POLISHED CONCRETE. PROVIDE TAPED WEIGHTED EDGE TO PREVENT CURLING AND TRIPPING.

C. FINISH SPECIFICATION FOR SOFFIT OVERHEAD. REFERENCE CORRESPONDING ELEVATION FOR EXTENTS.

--- MATERIAL PATTERN DIRECTION

--- AREA NOT IN SCOPE

--- FLOOR TRANSITION

PROJECT NUMBER: 20180316 PROJ. NAME: St Vincent de Paul Georgia Council Headquarters  
SHEET NUMBER: 11.13 FINISH PLAN  
M:\2018\20180316\07-Drawings\180316\_2017\_SVOP\_07302019\_baird02244.rvt  
5/14/2019 10:39:24 AM