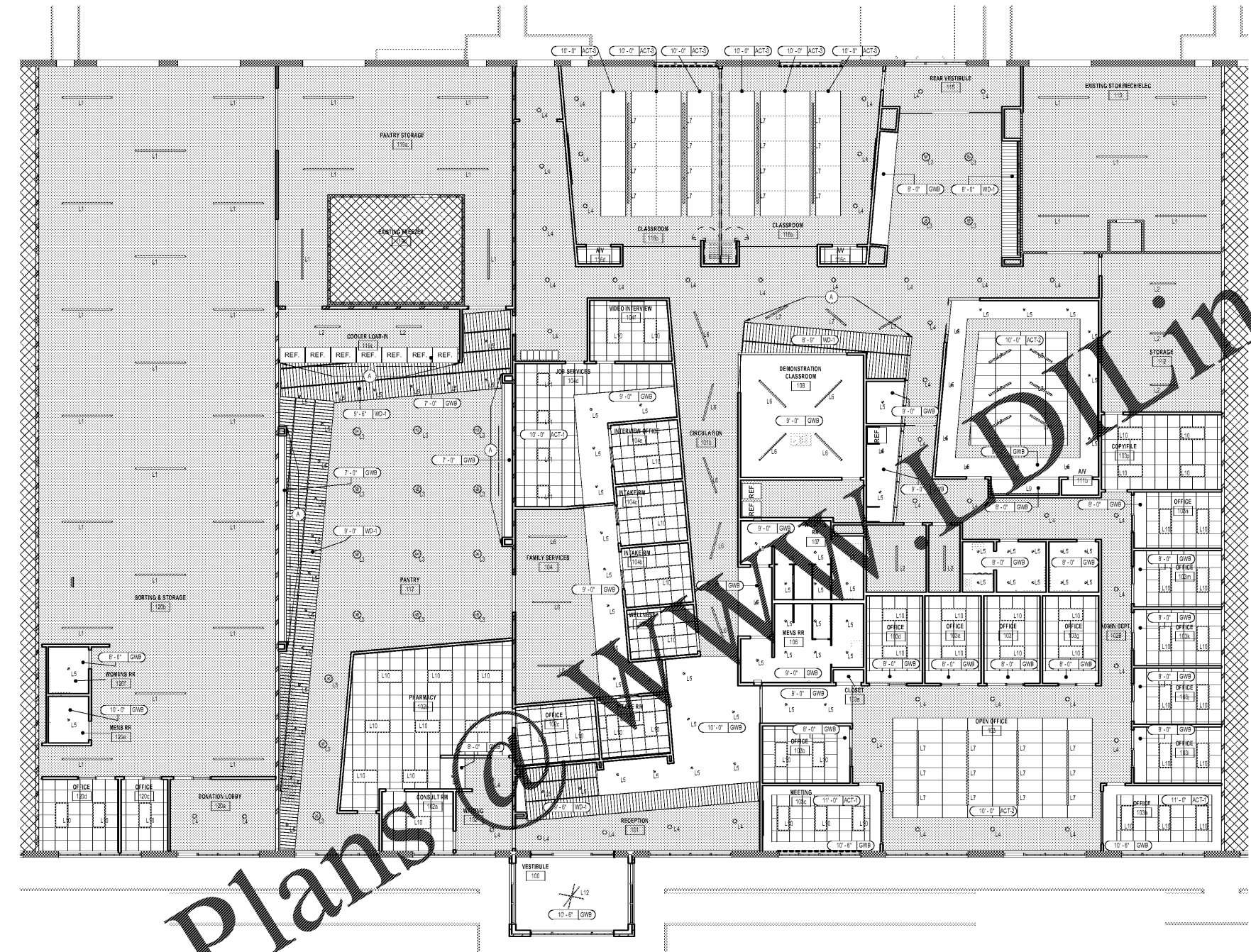


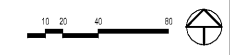


**SCOPE DOCUMENTS**  
The Contract Documents Issued for (Conceptual Design, Schematic Design, Design Development, Partial Construction Documents or Other Issuance up to Issued for Construction) are intended to be at that level of completion and as such, may be neither complete nor coordinated. The (Construction Manager, Contractor, Design/Builder) is responsible for complete and coordinated pricing (and execution) of the Work, and shall include items necessary for the proper execution and completion of the Work, as shown, specified, reasonably inferred or required for a complete Project. For Work of designed designs, systems, assemblies, components and materials shall comply with national, state and local code requirements. The (Construction Manager, Contractor, Design/Builder) shall inform the Owner and Architect, in timely fashion, of any discovered omissions, inconsistencies or errors in the Contract Documents.

ISSUANCES		
No.	Drawing Issue Description	Date
1	INTERIORS PRICING SET	08/13/19



1 REFLECTED CEILING PLAN  
11.11



CODE	MANUFACTURER	PRODUCT	MODEL	MODEL CODE	COMMENTS
L1	GE	Alto	ALV2 - Series	ALV208T08T03D500Q8TK0W	
L2	GE	Alto	ALV2 - Series	ALV208T08T03D5	
L3	TMS Lighting	Harley Pendant	19" Diameter	HAL-15-19-ED-CRD-8C30K-XX-F15-DIML-ACC	Black Finish
L4	Waga Lighting	Open LED Cylinder	4" Diameter x 12"	WV41206-ED-20-30K-RE-NEW	Black Finish
L5	NORA Lighting	Recessed	4" Downlight	NC-431-L20-30-DWS-FINCAH-40-24-LEX	
L6	Coronet	LS3 LED	Suspended Linear	LS3 LED UPDN 6FT 30 IN L T61 DLTG3 D8 UNV W AC N-SD D-SD	Black Finish
L7	Coronet	LS3 LED	Suspended Linear	LS3 LED UPDN 4FT 30 IN L T61 DLTG3 D8 UNV W AC N-SD D-SD	Black Finish
L8	Coronet	LSR3 LED	Recessed Wall Wash Linear	LSR3 LED 10FT 30 L T63 UNV D8 W XX WW	
L9	Spring Lighting Group	TD Recessed Troffer	2 x 4 LED	TD 24 48 G2 35K	
L10	Spring Lighting Group	TD Recessed Troffer	2 x 2 LED	TD 12 32 G2 35K	
L11	Scope Lighting	Waga Pendant	Decorative LED Pendant	CH10345	Black Finish

CODE	DESCRIPTION	MANUFACTURER	PRODUCT NAME	MODEL NO.	FINISH / COLOR	LOCATION	NOTES / COMMENTS
ACT-1	ACoustICAL CEILING TILE	ARMSTRONG				TYP. OFFICES	24"x24"
ACT-2	ACoustICAL CEILING TILE	ARMSTRONG				OPEN OFFICE	24"x48"
ACT-3	ACoustICAL CEILING TILE	ARMSTRONG				CLASSROOM	CLOUD

**REFLECTED CEILING PLAN KEY NOTES**  
A. WD+1 WOOD TO RETURN ACROSS FACE OF SOFFIT.  
B.

**REFLECTED CEILING PLAN GENERAL NOTES**  
1. ALL NEW ACoustICAL CEILINGS TO BE ACT-1 INSTALLED 9'-0" A.F.F., U.N.O.  
2. ALL SPEAKERS, PROJECTORS, AND PROJECTOR SCREENS ARE SHOWN FOR ELECTRICAL COORDINATION BY GC.  
3. REFER TO LIGHTING AND ENGINEERING SHEETS FOR FIXTURE TYPES AND OTHER ADDITIONAL INFORMATION.  
4. COORDINATE ALL LIFE SAFETY, FIRE PROTECTION, ACCESS PANELS, MECHANICAL AND ELECTRICAL LOCATIONS IN GWS CEILINGS WITH DESIGNER PRIOR TO INSTALLATION.  
5. ALL ACoustICAL CEILINGS TO BE CENTERED IN ROOM U.N.O.  
6. ALL RECESSED AND SURFACE MOUNTED FIXTURES SHALL BE CENTERED IN CEILING TILES, U.N.O.

**SYMBOL LEGEND**

	PENDANT MOUNTED FIXTURE		WALL SCONCE
	SURFACE MOUNTED FIXTURE		2X2 ACCESS PANEL
	RECESSED DOWN LIGHT		2X2 DIFFUSER
	RECESSED WALL WASH		SLOT DIFFUSER
	STRIP FIXTURE		MOTORIZED SHADES
	SUSPENDED TRACK FIXTURE		CEILING TYPE
	2X2 RECESSED LED FIXTURE		CEILING HEIGHT
	CEILING MOUNTED EXIT SIGN W/ DIRECTIONAL ARROW		NO CEILING - EXPOSED TO STRUCTURE
	WALL MOUNTED EXIT SIGN W/ DIRECTIONAL ARROW		LIMITED SCOPE
			AREA NOT IN SCOPE

St Vincent de Paul Georgia  
Council Headquarters

2050 Chamblee Tucker Rd  
Unit C D & E  
Chamblee, GA 30314

St Vincent de Paul Georgia

**REFLECTED CEILING PLAN**

BRIAN PARKER Principal Designer	20180316
GIVENETH KOVAR Project Manager	08/13/2019
M.S. & M.B. Staff Architect	
WVIANMOWGANJA Staff Architect	

11.11

PROJECT NUMBER: 20180316; PROJECT NAME: St Vincent de Paul Georgia Council Headquarters; SHEET NUMBER: 11.11; REFLECTED CEILING PLAN; M:\2018\20180316\07-Drawings\11.11-REFLECTED CEILING PLAN.dwg; 8/14/2019 10:39:18 AM