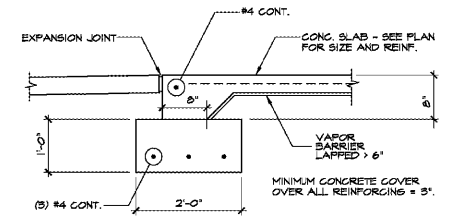
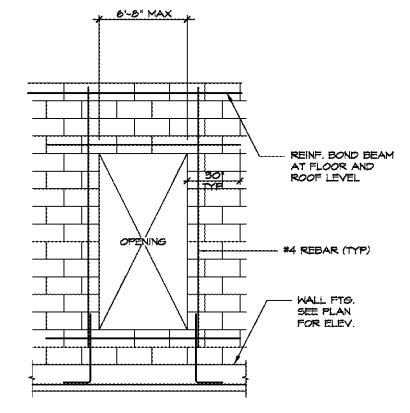


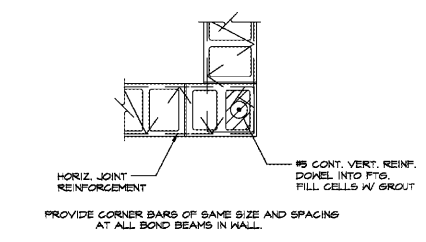
CONTINUOUS WALL FOOTING SECTION 1



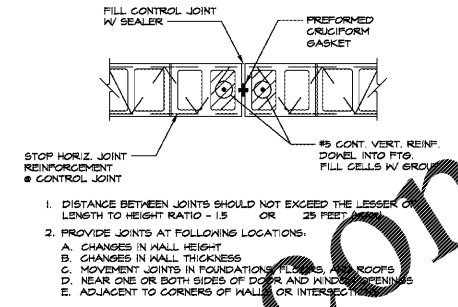
CONTINUOUS WALL FOOTING SECTION 1a



WALL REINFORCEMENT AT MASONRY OPENINGS 2
 REINFORCING SHOWN IN THIS DETAIL IS IN ADDITION TO VERTICAL WALL REINFORCING SPECIFIED ON PLANS.



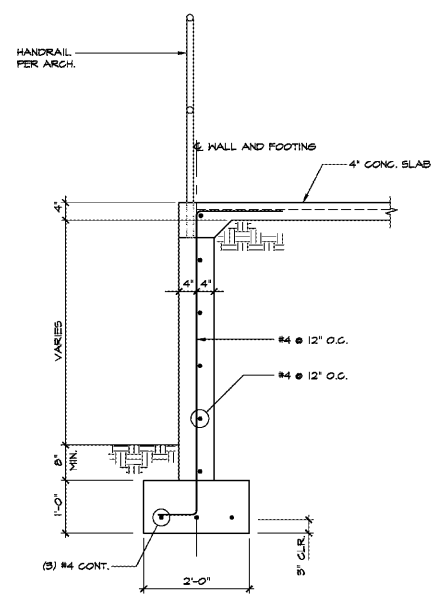
CORNER REINFORCEMENT 3
 TYPICAL AT ALL MASONRY ENDS AND CORNERS.



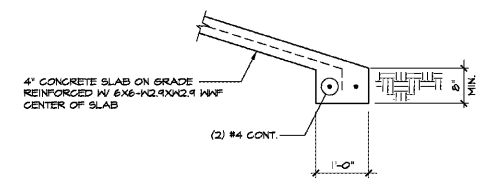
MASONRY CONTROL JOINT 4
 TYPICAL AT ALL MASONRY WALLS. SEE SELECTIONS FOR EXACT LOCATIONS.

- DISTANCE BETWEEN JOINTS SHOULD NOT EXCEED THE LESSER OF LENGTH TO HEIGHT RATIO - 1.5 OR 25 FEET.
- PROVIDE JOINTS AT FOLLOWING LOCATIONS:
 - CHANGES IN WALL HEIGHT
 - CHANGES IN WALL THICKNESS
 - MOVEMENT JOINTS IN FOUNDATIONS, FLOORS, AND ROOFS
 - NEAR ONE OR BOTH SIDES OF DOOR AND WINDOW OPENINGS
 - ADJACENT TO CORNERS OF WALLS OR INTERSECTIONS

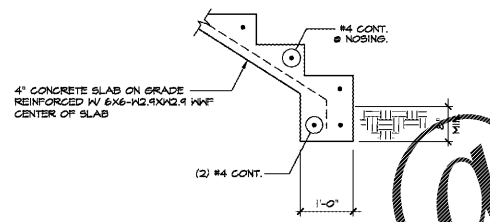
ISSUANCES		
No.	Drawing Issue Description	Date
1	Design Development	08/28/2019



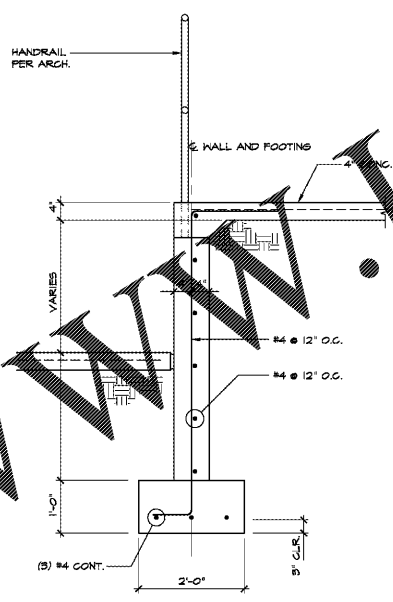
STOOP SECTION 5



RAMP SECTION 6



STEPS SECTION 7



STOOP SECTION 8

Order Plans @

WWW.LDILine.com

PROJECT NUMBER: 20190316 PROJECT NAME: St Vincent de Paul Georgia Council Headquarters ARCHITECTURE: wongj202054.rvt 8/27/2019 4:00:11 PM

St Vincent de Paul Georgia Council Headquarters
 2050 Chamblee Tucker Rd
 Chamblee, GA 30314
 St Vincent de Paul Georgia
 Foundation Details

Designer	20190316
Project in Charge	Project No.
Approver	08/28/19
Project Manager	Date
Checker	
Project Architect	
Author	S3.01
Self Approved	