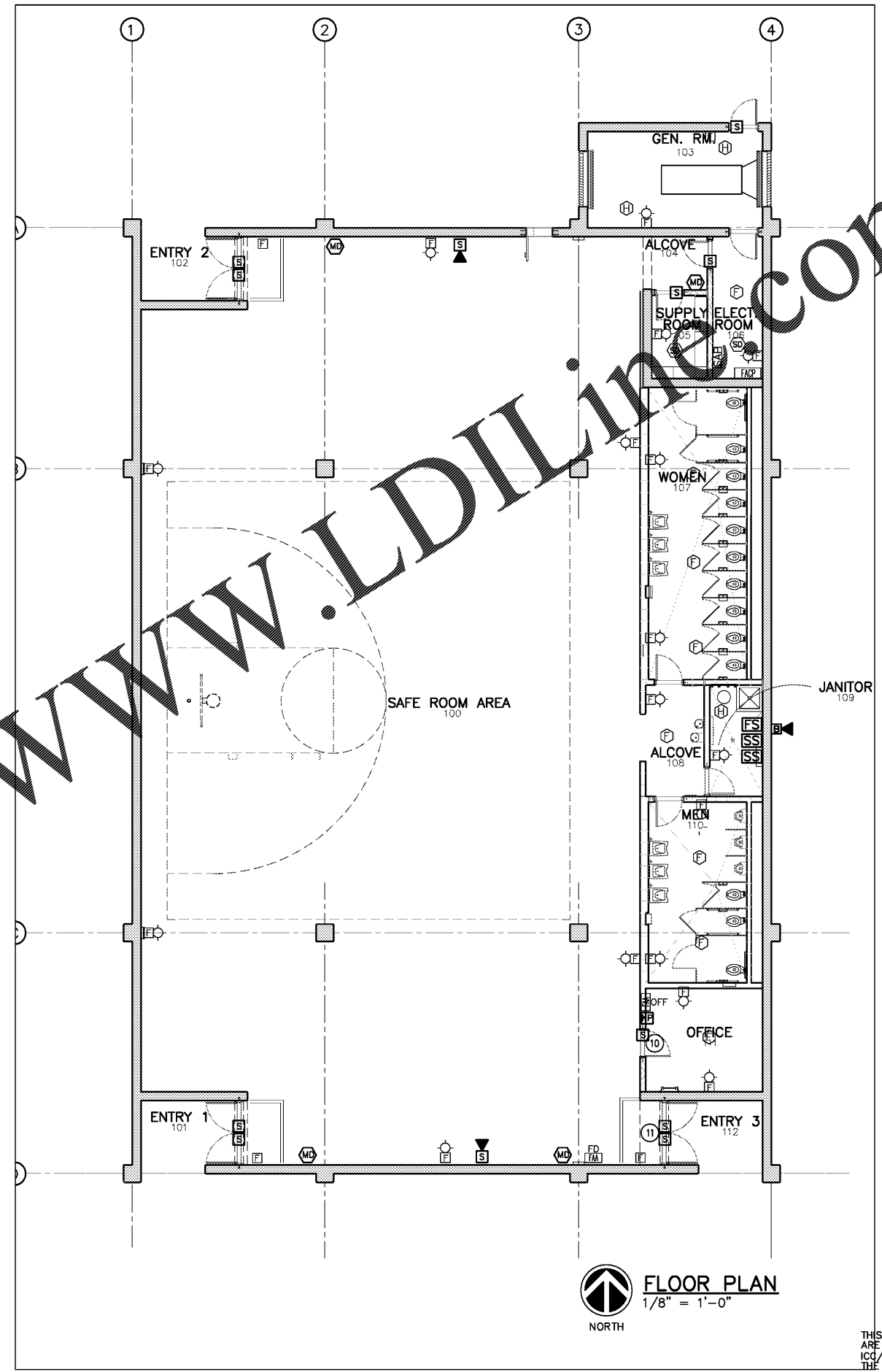
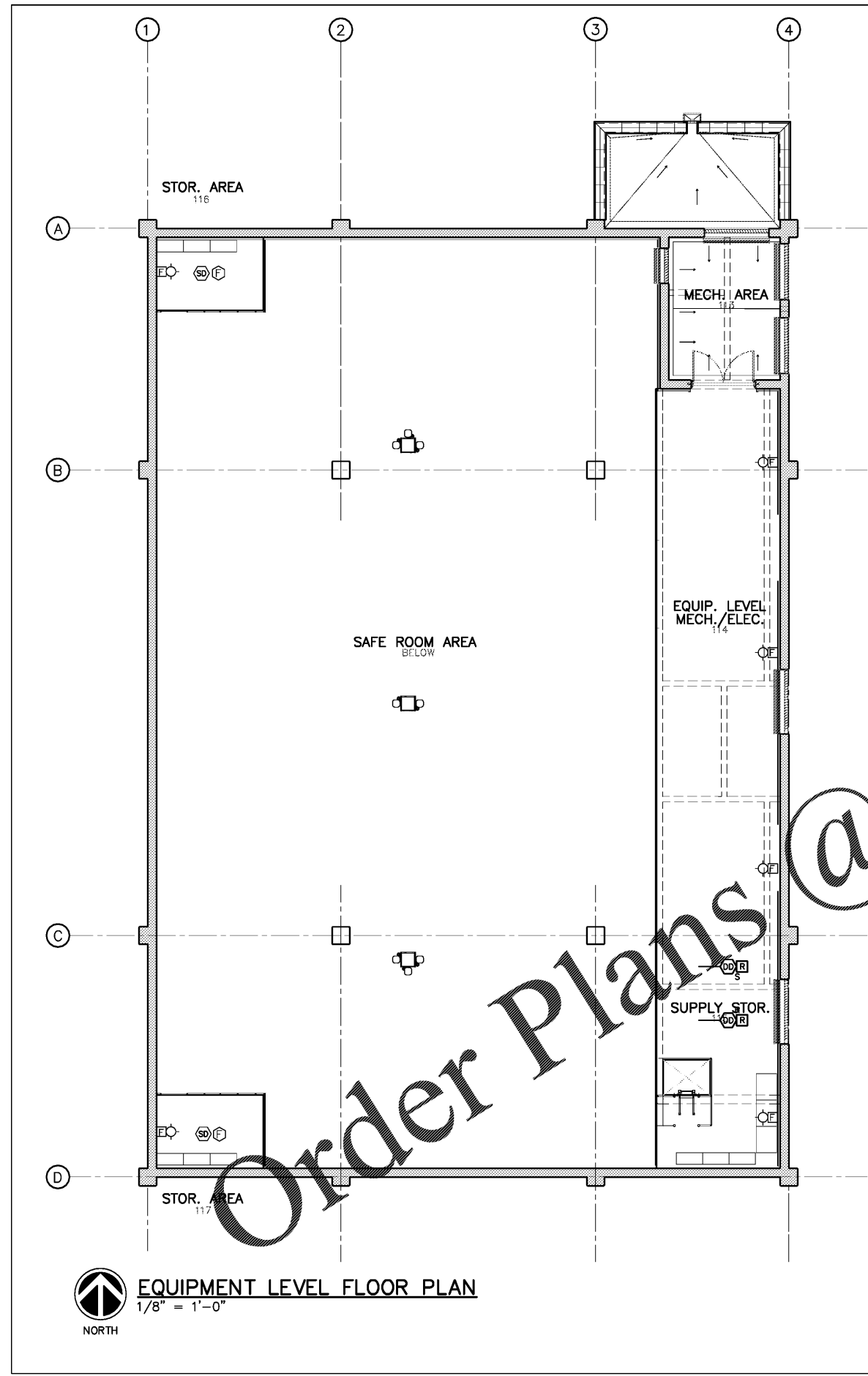



FILE: Z:\Engineer\11MON01 PERRY COUNTY COMMUNITY SHELTERS\Drawings\PERRY COUNTY COMMUNITY SHELTER - MARION\Sheets\Electrical\E3.0 FLOOR PLAN.dwg
 PLOTTED BY: JOHN TORBERT
 LAST SAVE: Apr/30/2019 3:42 PM



Order Plans @ WWW.LDILINE.COM



SEAL
 STATE OF ALABAMA
 CHARLES W. RAINE
 NO. 1945
 BIRMINGHAM ALABAMA
 REGISTERED ARCHITECT

SEAL
 APRIL 30 2019
 PROFESSIONAL
 No. 14899
 PROFESSIONAL

NO.	DATE	REVISION
1	04-25-2018	REVISED FINAL
2	06-13-2018	ABC'S COMMENTS AND REPLES
3	04-08-2019	SECOND REVISED FINAL
4		ABC'S COMMENTS AND REPLES

REUSE OF DOCUMENTS
 THIS DOCUMENT WITH THE IDEAS AND DESIGNS INCORPORATED HEREIN ARE AN INSTRUMENT OF SERVICE AND MUST NOT TO BE USED IN WHOLE OR IN PART FOR ANY OTHER PROJECT WITHOUT THE WRITTEN AUTHORIZATION OF KAFRA.

PROJECT:
 COMMUNITY STORM SHELTER
 B.C. NO. 2014346
 FOR THE
 PERRY COUNTY COMMISSION
 300 Washington Street, Meritt, Alabama
 Perry County, Alabama 36756

DATE	APRIL 30, 2019
DRWN. BY	DKBS
DSGN. BY	DKBS
CHKD. BY	JRTT
APVD. BY	JRTT
SCALE	1/8" = 1'-0"

ELECTRICAL
 SHEET TITLE
 MARION STORM SHELTER
 FIRE ALARM
 AND
 SECURITY PLAN

E3.0

PROJECT No. 11MON01
 DRAWING No. E3.0
 B.C. Project No. 2014346

STRUCTURAL DRAWINGS ARE BASED ON ICC 500 "ICC/NSSA STANDAND FOR THE DESIGN AND CONSTRUCTION OF STORM SHELTERS." BASED ON THE "DESIGN WIND SPEED MAP FOR STORM SHELTERS," THE STRUCTURAL SYSTEMS FOR THE BUILDING WAS DESIGNED FOR ZONE IV (250 MILES PER HOUR) LOADS.

CONSTRUCTION DOCUMENTS