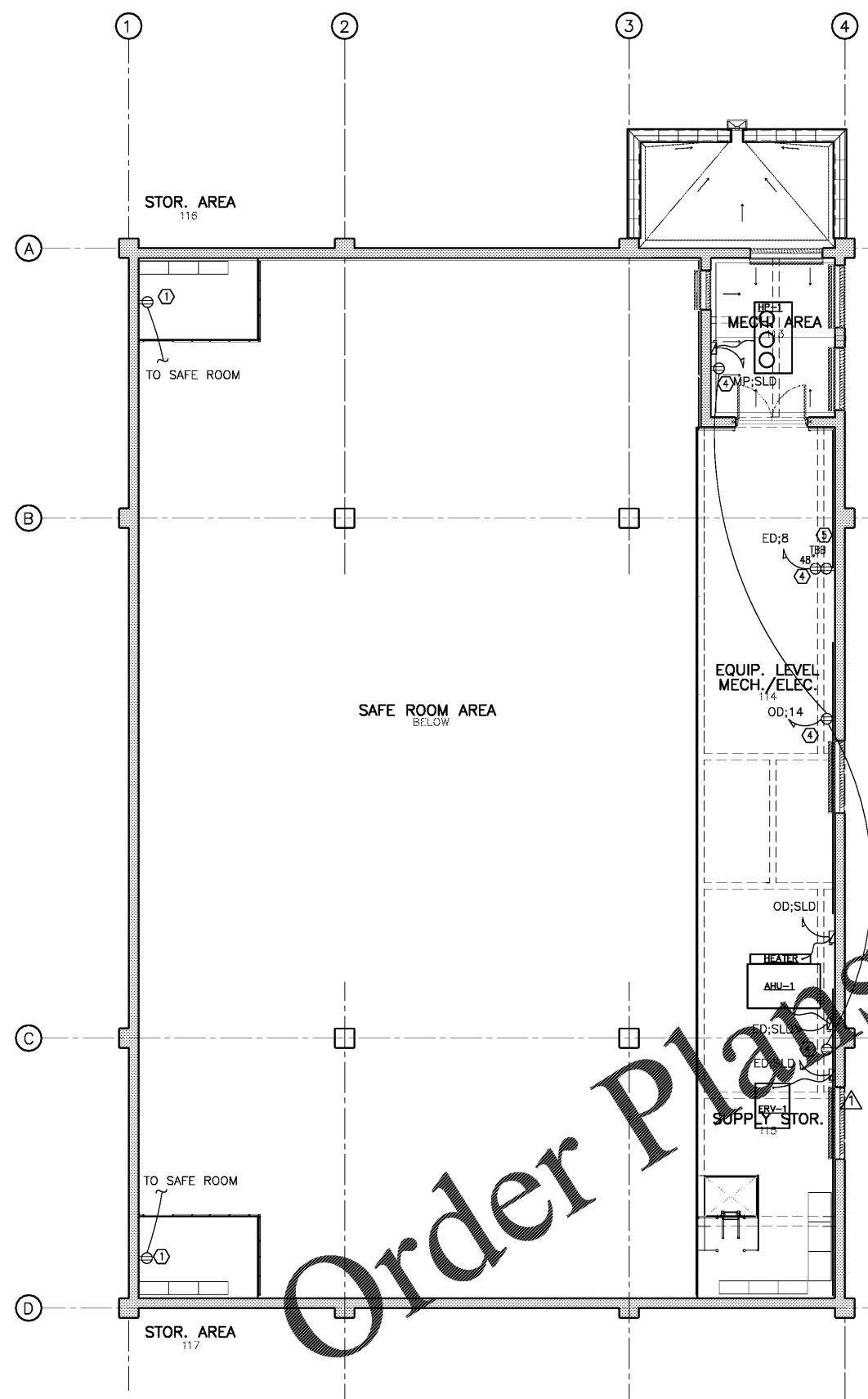
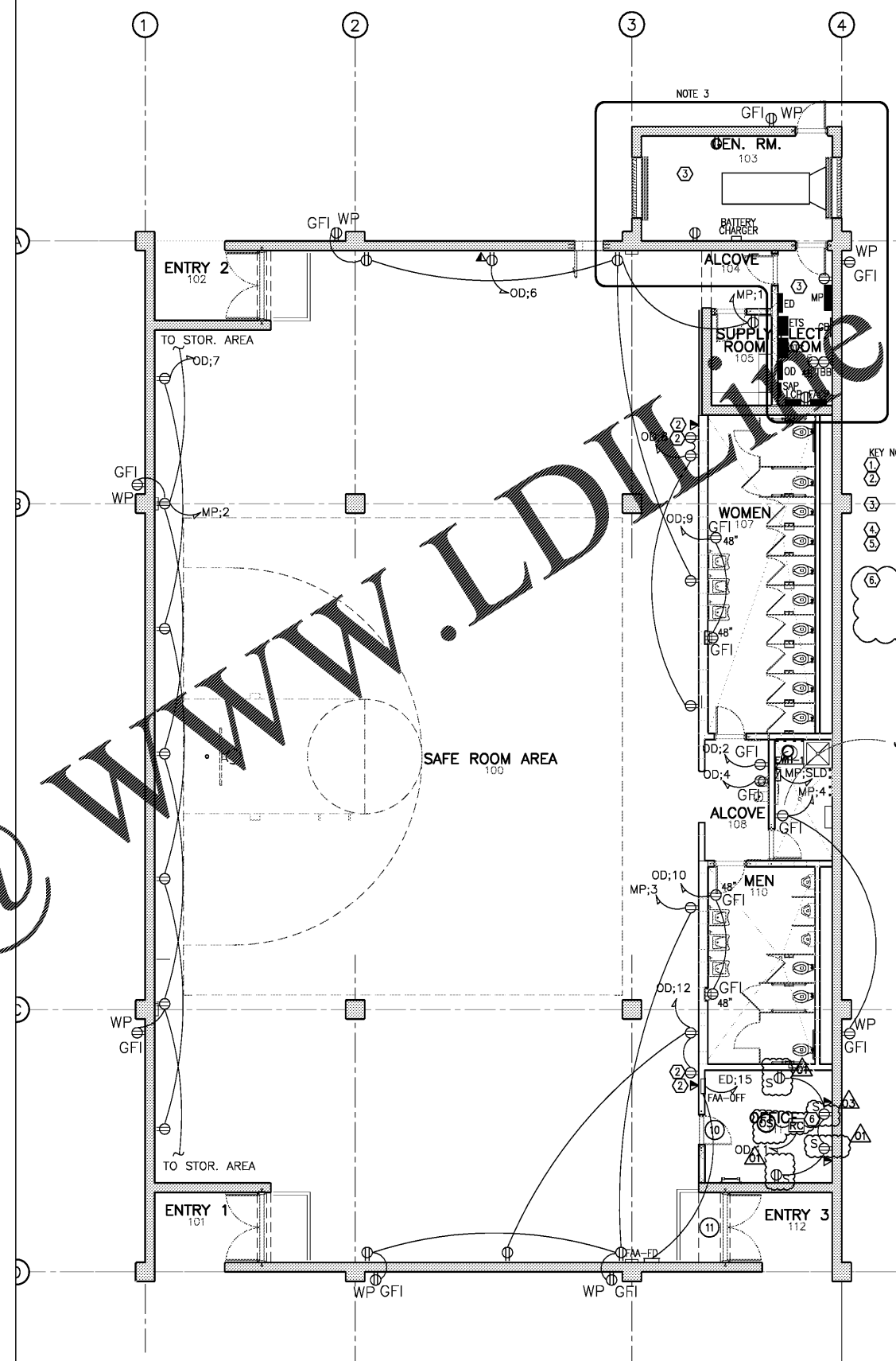


FILE: Z:\Engineer\11MON01 PERRY COUNTY COMMUNITY SHELTERS\Drawings\PERRY COUNTY COMMUNITY SHELTER - MARION\Sheets\Electr\c\E2.0 POWER ANTE.RAY\22\2019\6056.PK PLOTTED BY: JOHN TORREERT LAST SAVE: Apr/3/2019 3:12 PM



**EQUIPMENT LEVEL FLOOR PLAN**  
1/8" = 1'-0"  
NORTH



**FLOOR PLAN**  
1/8" = 1'-0"  
NORTH

**KEY NOTES:**  
 ① RECEPTACLE MOUNTED 18" ABOVE STORAGE PLATFORM FLOOR.  
 ② RECEPTACLE AND COMMUNICATIONS OUTLET MOUNTED 96" AFF FOR FUTURE WIRELESS ACCESS POINT (BY OWNER).  
 ③ SEE LARGE SCALE PLAN (E4.2) FOR ELECTRICAL AND GENERATOR ROOM FOR CIRCUITS.  
 ④ FOR MECHANICAL CONTROLS EQUIPMENT.  
 ⑤ "TBB" BACKBOARDS SHALL BE 48" WIDE BY 96" TALL 1/2" FLAME RETARDANT TREATED PLYWOOD MOUNTED TO WALL FOR COMMUNICATIONS OR GENERAL EQUIPMENT AS REQUIRED.  
 ⑥ DUPLEX RECEPTACLES IDENTIFIED WITH "S" SHALL BE SPLIT. ONE RECEPTACLE SHALL BE UN-SWITCHED AND ONE SHALL BE SWITCHED WITH THE LIGHTING CONTROL SYSTEM. EACH RECEPTACLE SHALL BE IDENTIFIED WITH AN ENGRAVED MARKING ON THE PLATE: "SWITCHED" OR "UNSWITCHED". SEE LIGHTING PLAN E1.0.

WWW.LDILLIVE.com

Order Plans @

SEAL

SEAL

NO.	DATE	REVISION
01	04-25-2018	REVISED FINAL
02	06-13-2018	ABC'S COMMENTS AND REPLIES
03	04-08-2019	PER REVIEW REPLIES TO OMC
04		SECOND REVISIONS
05		ABC'S COMMENTS AND REPLIES

**REUSE OF DOCUMENTS**  
 THIS DOCUMENT WITH THE IDEAS AND DESIGNS INCORPORATED HEREIN ARE AN INSTRUMENT OF SERVICE AND MUST NOT TO BE USED IN WHOLE OR IN PART FOR ANY OTHER PROJECT WITHOUT THE WRITTEN AUTHORIZATION OF KHAFRA

**PROJECT:** COMMUNITY STORM SHELTER  
**B.C. NO. 2019-0346**  
**FOR THE**  
**PERRY COUNTY COMMISSION**  
 300 Washington Street, Marietta, Alabama  
 Perry County, Alabama 36756

DATE	APRIL 30, 2019
DRWN. BY	DKBS
DSGN. BY	DKBS
CHKD. BY	JRTT
APVD. BY	JRTT
SCALE	1/8" = 1'-0"

**SHEET TITLE:** MARION STORM SHELTER POWER AND DATA PLAN

PROJECT No. 11MON01  
 DRAWING No. **E2.0**

B.C. Project No. 2014346

STRUCTURAL DRAWINGS ARE BASED ON ICC 500 "ICC/NSSA STANDAND FOR THE DESIGN AND CONSTRUCTION OF STORM SHELTERS." BASED ON THE "DESIGN WIND SPEED MAP FOR STORM SHELTERS," THE STRUCTURAL SYSTEMS FOR THE BUILDING WAS DESIGNED FOR ZONE IV (250 MILES PER HOUR) LOADS.

CONSTRUCTION DOCUMENTS