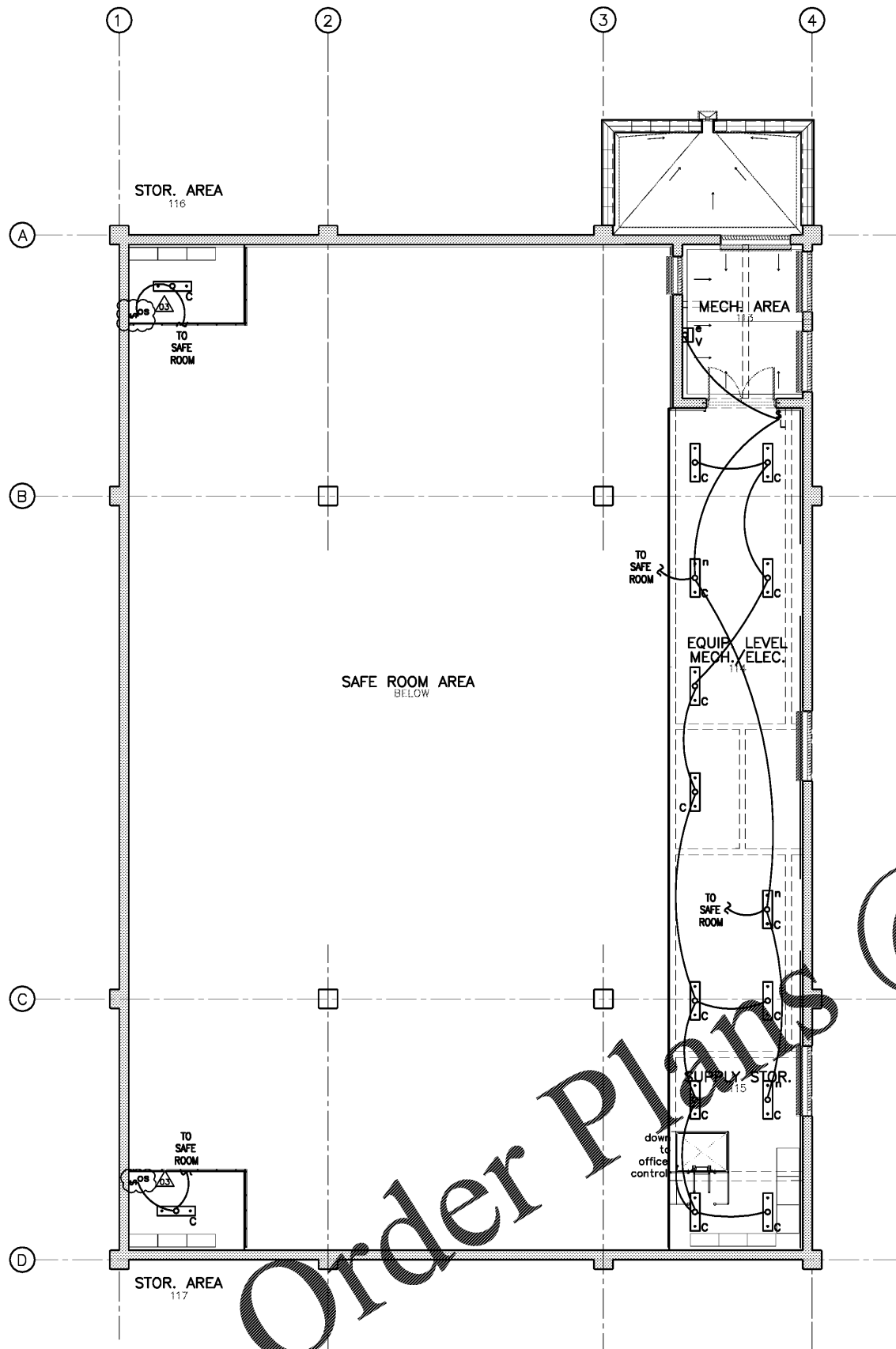
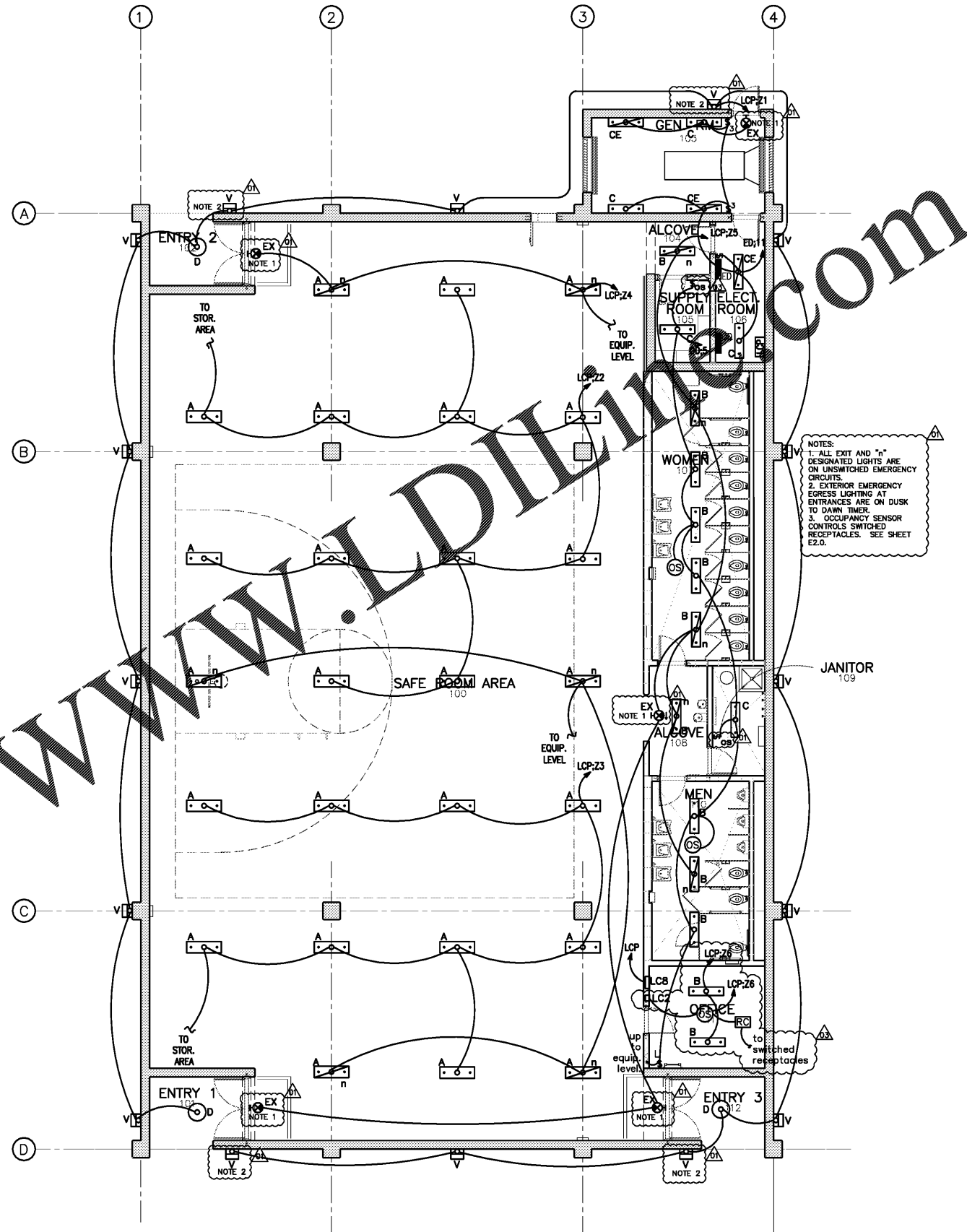


FILE: Z:\Engineer\11MON01 PERRY COUNTY COMMUNITY SHELTERS\Drawings\PERRY COUNTY COMMUNITY SHELTERS\Electrical\E1.0 LCP\CONSTRUCTION\2019 6-42 PM PLOTTED BY: JOHN TOBRETT LAST SAVE: Apr/30/2019 2:02 PM



EQUIPMENT LEVEL FLOOR PLAN
1/8" = 1'-0"



FLOOR PLAN
1/8" = 1'-0"

NOTES:
1. ALL EXIT AND "I" DESIGNATED LIGHTS ARE ON UNSWITCHED EMERGENCY CIRCUITS.
2. EXTERIOR EMERGENCY EGRESS LIGHTING AT ENTRANCES ARE ON DUSK TO DAWN TIMER.
3. OCCUPANCY SENSOR CONTROLS SWITCHED RECEPTACLES. SEE SHEET E2.0.

Order Plans @ WWW.DIPLING.COM

KAFRA

SEAL
STATE OF ALABAMA
CHARLES W. RAINE
NO. 1945
BIRMINGHAM ALABAMA
REGISTERED ARCHITECT

SEAL
APR 30 2019
ALABAMA
LICENSED PROFESSIONAL
No. 14839

NO.	DATE	REVISION
1	04-25-2018	REVISED FINAL ABC'S COMMENTS AND REPLIES TO OMC
2	06-13-2018	PEER REVIEW REPLIES TO OMC
3	04-08-2019	SECOND REVISION COMMENTS AND REPLIES TO OMC

REUSE OF DOCUMENTS
THIS DOCUMENT WITH THE IDEAS AND DESIGNS INCORPORATED HEREIN ARE AN INSTRUMENT OF SERVICE AND MUST NOT BE USED IN WHOLE OR IN PART FOR ANY OTHER PROJECT WITHOUT THE WRITTEN AUTHORIZATION OF KAFRA

PROJECT:
COMMUNITY STORM SHELTER
B.C. NO. 2014346
FOR THE
PERRY COUNTY COMMISSION
300 Washington Street, Meritt Alabama
Perry County, Alabama 36756

DATE	APRIL 30, 2019
DRWN. BY	DKBS
DSGN. BY	DKBS
CHKD. BY	JRTT
APVD. BY	JRTT
SCALE	1/8" = 1'-0"

SHEET TITLE
MARION STORM SHELTER
LIGHTING PLAN

PROJECT No. 11MON01
DRAWING No. **E1.0**
B.C. Project No. 2014346

THIS SET OF CONSTRUCTION DOCUMENTS ARE IN CONFORMITY WITH THE ICC/NSSA-500 2014 "STANDARD FOR THE DESIGN AND CONSTRUCTION OF STORM SHELTERS" REQUIREMENTS.

STRUCTURAL DRAWINGS ARE BASED ON ICC 500 "ICC/NSSA STANDAND FOR THE DESIGN AND CONSTRUCTION OF STORM SHELTERS." BASED ON THE "DESIGN WIND SPEED MAP FOR STORM SHELTERS," THE STRUCTURAL SYSTEMS FOR THE BUILDING WAS DESIGNED FOR ZONE IV (250 MILES PER HOUR) LOADS.