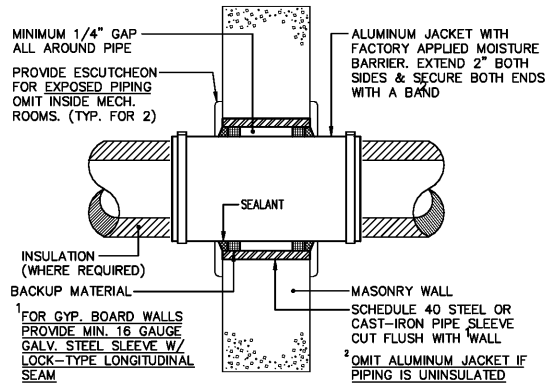


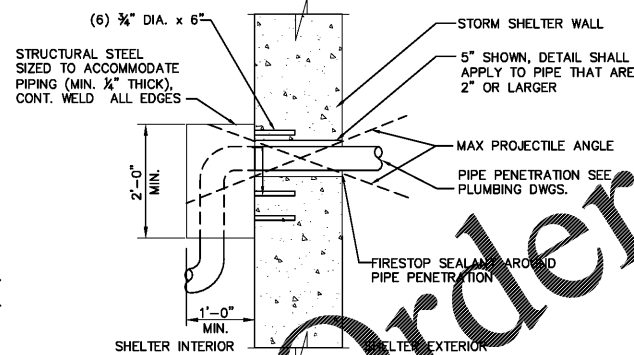
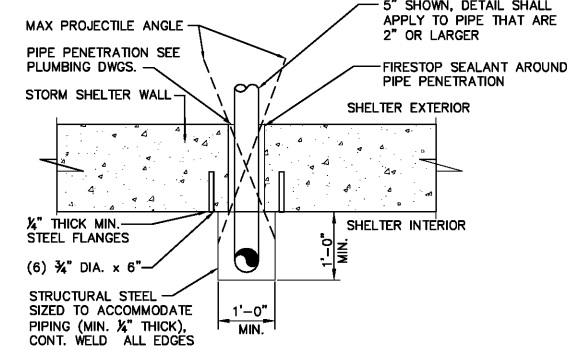
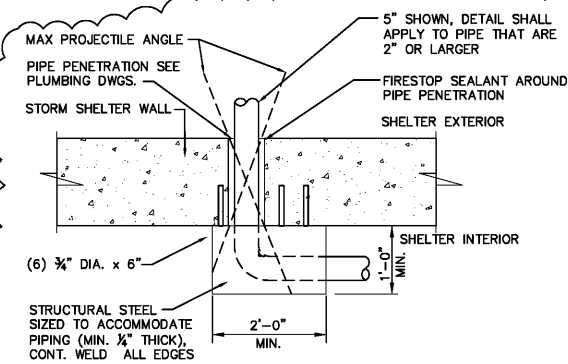
LAST SAVE: May/16/2019 3:04 PM

PLOT DATE: May/16/2019 4:09 PM PLOTTED BY: MARCUS ZINNERMAN

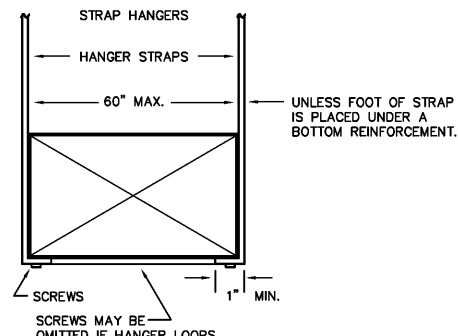
FILE: C:\Users\MZinnerman\Dropbox\2015\15010 - Perry County (1800)\Khatra - Revised\M3.1 4:30 DETAILS.dwg



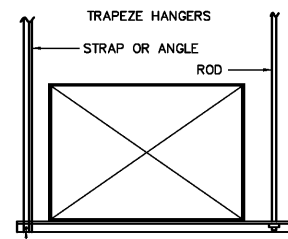
WALL PIPE PENETRATION DETAIL N.T.S.



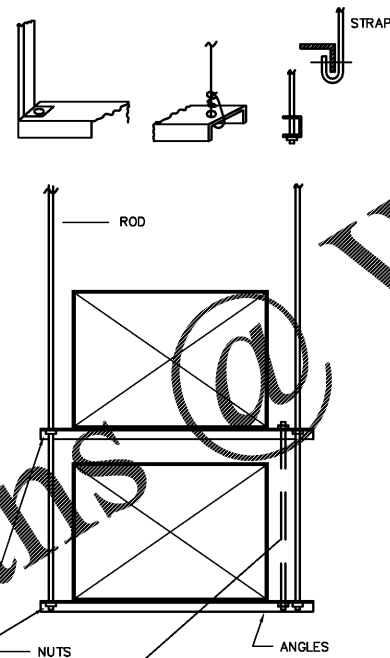
STORM SHELTER WALL PIPING PENETRATION DETAIL N.T.S.



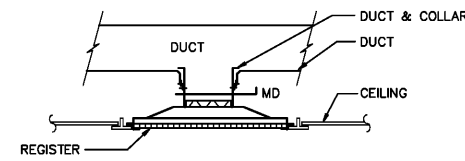
TYPE S1



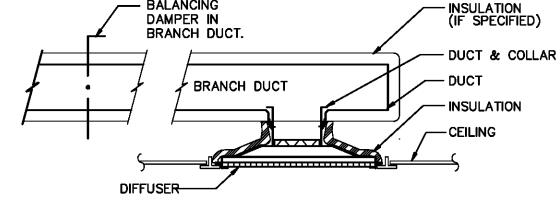
TYPE S2



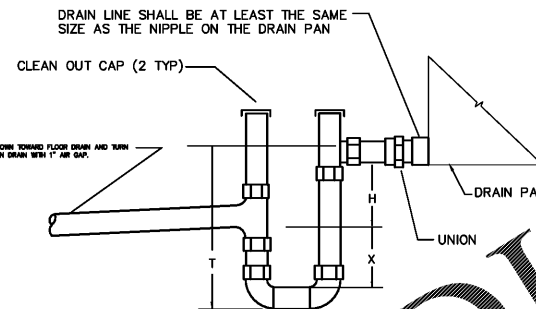
TYPE S3



EXHAUST AIR REGISTER DETAIL N.T.S.



SUPPLY AIR DIFFUSER DETAIL N.T.S.

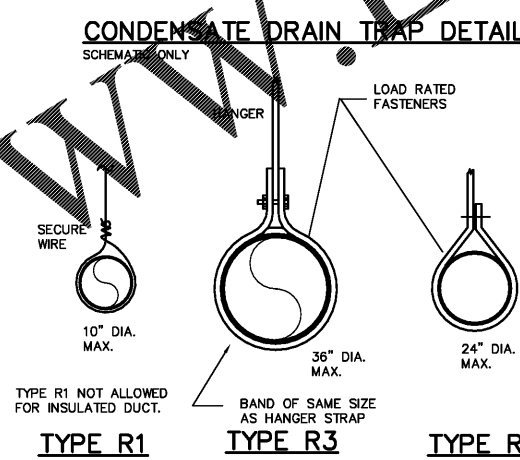


AHU / ERV SUSPENSION DETAIL N.T.S.

BLOW THRU UNITS
X= AT LEAST 1" PLUS CASING STATIC PRESSURE.
H= AT LEAST 1"
T= X + H + (1.5 X PIPE DIAMETER)

DRAW THRU UNITS
X= AT LEAST 1" PLUS CASING STATIC PRESSURE.
X= H/2
T= X + H + (1.5 X PIPE DIAMETER)

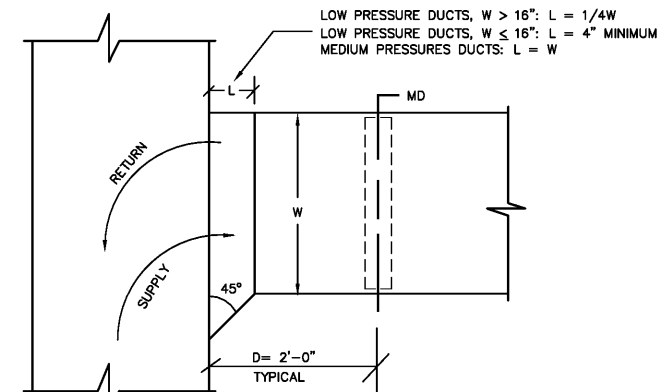
CONDENSATE DRAIN TRAP DETAIL SCHEMATIC ONLY



TYPE R1

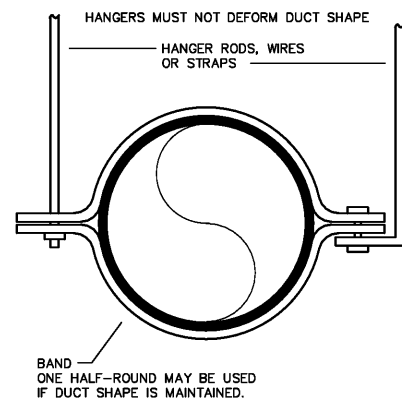
TYPE R3

TYPE R2



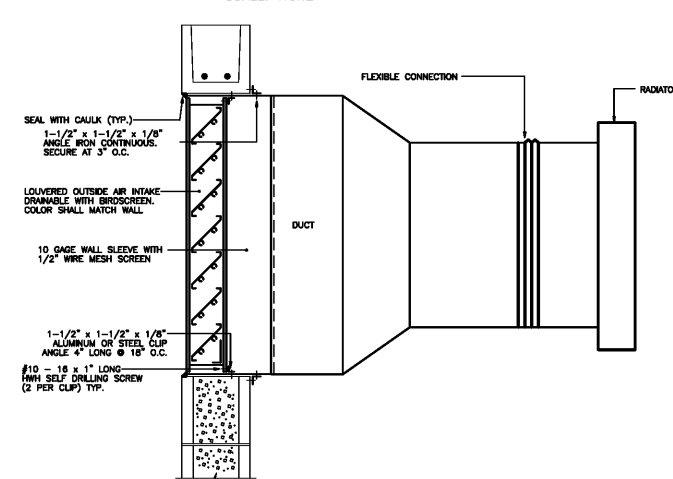
DUCT BRANCH CONNECTION SCALE: NONE

NOTE: PROVIDE OPPOSED BLADE MANUAL DAMPER AT 24" FROM DUCT MAIN, IF D = 2'-0" IS NOT POSSIBLE THEN CENTER DAMPER BETWEEN THE MAIN DUCT AND THE NEXT BRANCH TAKE-OFF.



TYPE R4

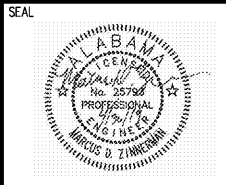
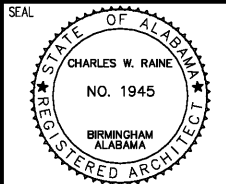
LOWER HANGER ATTACHMENTS NO SCALE



GENERATOR DUCTING DETAIL N.T.S.

THIS SET OF CONSTRUCTION DOCUMENTS ARE IN CONFORMITY WITH THE ICC/NSSA-500 2014 "STANDARD FOR THE DESIGN AND CONSTRUCTION OF STORM SHELTERS" REQUIREMENTS.

KHAFRA



NO.	DATE	REVISION	APPROVED	ROSS
04-25-2018	APPROVED	REVISED FINAL ABC'S COMMENTS AND REPLY TO PERM REVIEW REPLY TO OMC		
06-13-2018	APPROVED	SECOND ROUND REVISIONS COMMENTS AND REPLY TO OMC		
04-08-2019	APPROVED	FINAL COMMENTS AND REPLY TO OMC		

REUSE OF DOCUMENTS
THIS DOCUMENT WITH THE IDEAS AND DESIGNS INCORPORATED HEREIN ARE AN INSTRUMENT OF PRACTICE AND MUST NOT BE USED IN WHOLE OR IN PART FOR ANY OTHER PROJECT WITHOUT THE WRITTEN AUTHORIZATION OF KHAFRA

PROJECT: COMMUNITY STORM SHELTER B.C. NO. 2015-0346 FOR THE PERRY COUNTY COMMISSION
300 Washington Street, Monticello, Alabama 36176
Perry County, Alabama 36176

DATE	APRIL 30, 2019
DRWN. BY	DRCO
DSGN. BY	DRCO
CHKD. BY	MDZN
APVD. BY	MDZN
SCALE	NONE

SHEET TITLE: MECHANICAL MARION STORM SHELTER MARION SAFE ROOM DETAILS

PROJECT No. 11MON01
DRAWING No. M3.1
B.C. Project No. 2014346

STRUCTURAL DRAWINGS ARE BASED ON ICC 500 "ICC/NSSA STANDAND FOR THE DESIGN AND CONSTRUCTION OF STORM SHELTERS." BASED ON THE "DESIGN WIND SPEED MAP FOR STORM SHELTERS," THE STRUCTURAL SYSTEMS FOR THE BUILDING WAS DESIGNED FOR ZONE IV (250 MILES PER HOUR) LOADS.

CONSTRUCTION DOCUMENTS