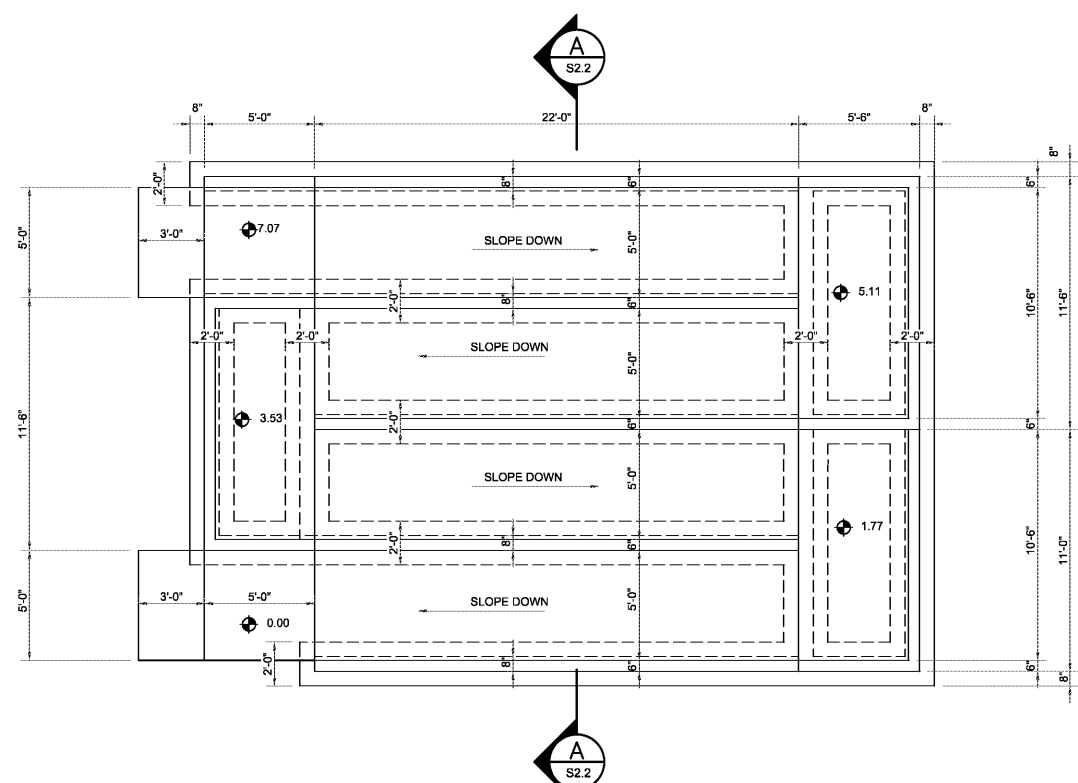
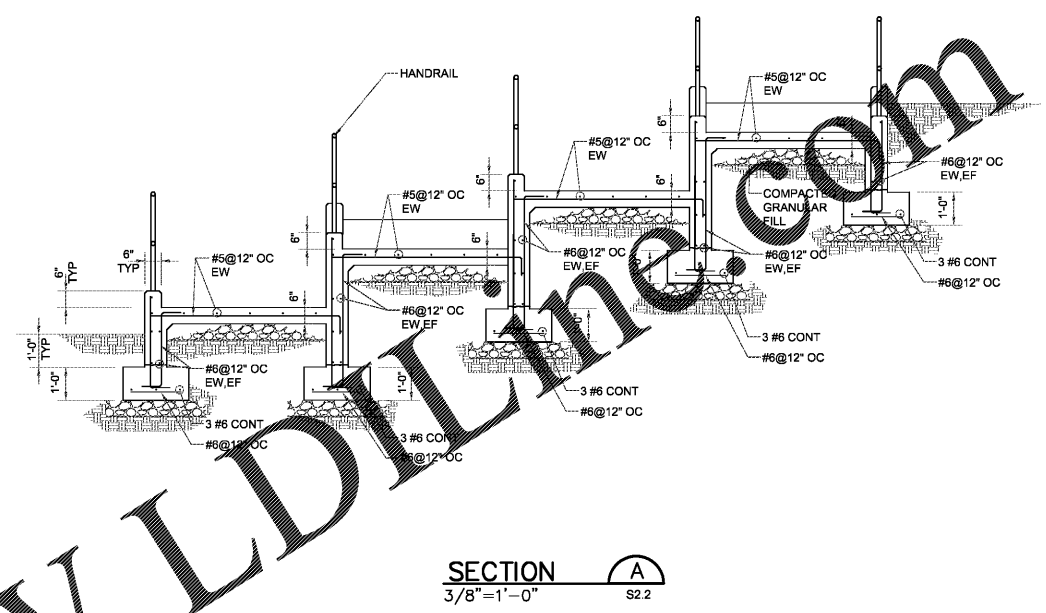


LAST SAVE: May/2/2019 10:36 PM

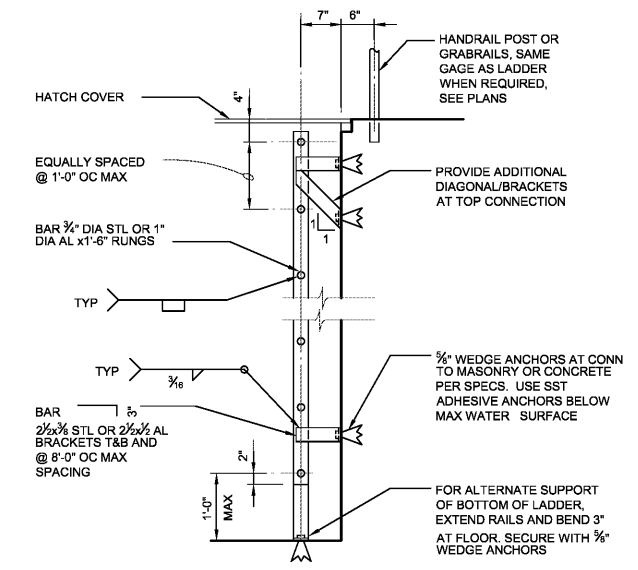
FILE: B:\Engineering\11MON01 PERRY COUNTY COMMUNITY SHELTERS\11MON01 PERRY COUNTY COMMUNITY SHELTER - MARION STORM SHELTER S2.2 RAMP SECTION (PARTIAL).DWG 10:37 PM PLOTTED BY: RGY 5/15/2019



PLAN
1/4"=1'-0"
NORTH



SECTION
3/8"=1'-0"
A
S2.2



- NOTES:**
- HOT DIP GALVANIZE STEEL AFTER FABRICATION.
 - PROVIDE PROTECTION FOR DISSIMILAR METALS AND CONCRETE PER SPECIFICATIONS.

LADDER
NTS
200

THIS SET OF CONSTRUCTION DOCUMENTS ARE IN CONFORMITY WITH THE ICC/ANSI-500 2014 "STANDARD FOR THE DESIGN AND CONSTRUCTION OF STORM SHELTERS" REQUIREMENTS.

STRUCTURAL DRAWINGS ARE BASED ON ICC 500 "ICC/NSSA STANDAND FOR THE DESIGN AND CONSTRUCTION OF STORM SHELTERS." BASED ON THE "DESIGN WIND SPEED MAP FOR STORM SHELTERS," THE STRUCTURAL SYSTEMS FOR THE BUILDING WAS DESIGNED FOR ZONE IV (250 MILES PER HOUR) LOADS.

NO.	DATE	REVISION	APPROVED
AA	04-25-2018	REVISED FINAL ABC'S COMMENTS AND REPLIES	ROSS
AB	06-13-2018	PEER REVIEW REPLIES TO OMC	ROSS
AC	04-08-2019	SECOND REVIEW FINAL ABC'S COMMENTS AND REPLIES	ROSS

REUSE OF DOCUMENTS

THIS DOCUMENT WITH THE IDEAS AND DESIGNS INCORPORATED HEREIN ARE AN INSTRUMENT OF PROFESSIONAL SERVICE AND MUST NOT BE USED IN WHOLE OR IN PART FOR ANY OTHER PROJECT WITHOUT THE WRITTEN AUTHORIZATION OF KHAFFRA

PROJECT: COMMUNITY STORM SHELTER NO. 20 FOR THE B.C. 346

FOR THE: PERRY COUNTY COMMISSION

300 Washington Street, Marietta, Alabama
Perry County, Alabama 36756

DATE: APRIL 30, 2019
DRWN. BY: DMML
USON. BY: DOBD
CHKD. BY: DOBD
APVD. BY: DOBD
SCALE: 1/8" = 1'-0"

SHEET TITLE: MARION STORM SHELTER RAMP SECTIONS AND DETAILS	STRUCTURAL
PROJECT No.: 11MON01	
DRAWING No.: S2.2	
B.C. Project No.: 2014346	

Order Plans @ WWW.LDLINE.COM

CONSTRUCTION DOCUMENTS