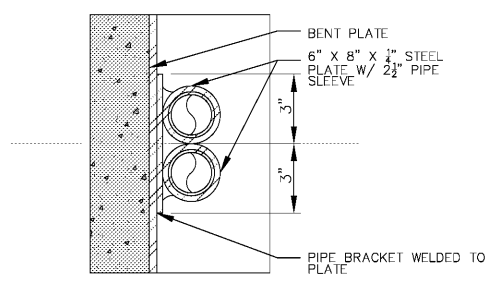
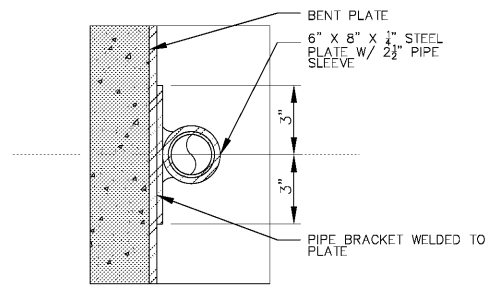


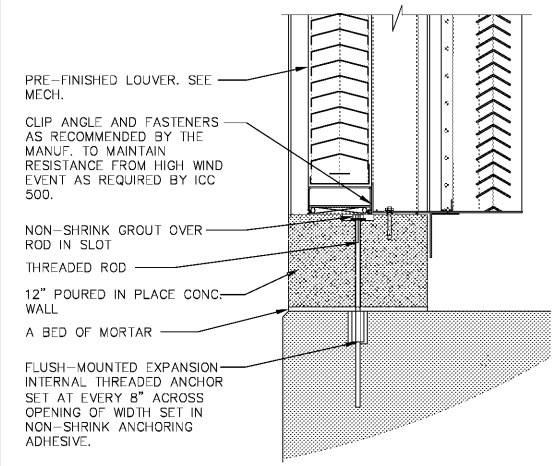
LAST SAVE: 04/15/2018 1:12 PM  
 PLOTTED BY: RCV\_STAGES  
 FILE: R:\Engineer\T\WONG\PERRY COUNTY COMMUNITY SHELTERS\Drawings\PERRY COUNTY COMMUNITY SHELTERS\A4.3 DETAILS.dwg  
 DATE: May 23/2019 1:16 AM



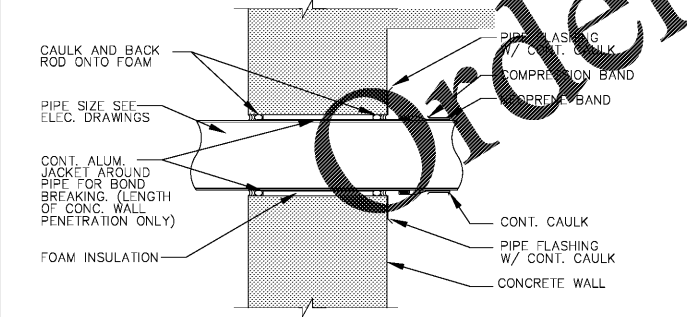
**DOUBLE BRACKET PLAN DETAIL** (12)  
SCALE: 3" = 1'-0" (REMOVABLE SECTION)



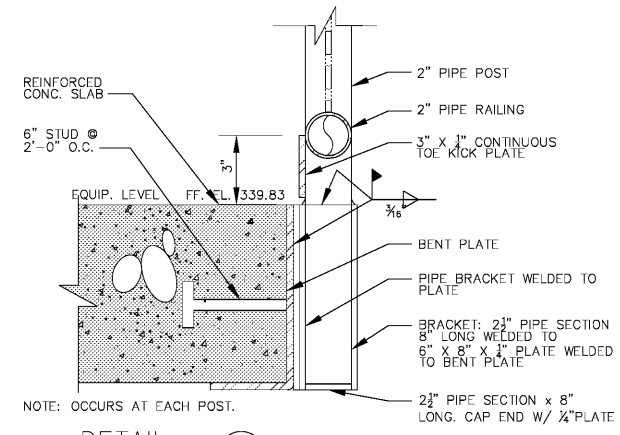
**SINGLE BRACKET PLAN DETAIL** (13)  
SCALE: 3" = 1'-0"



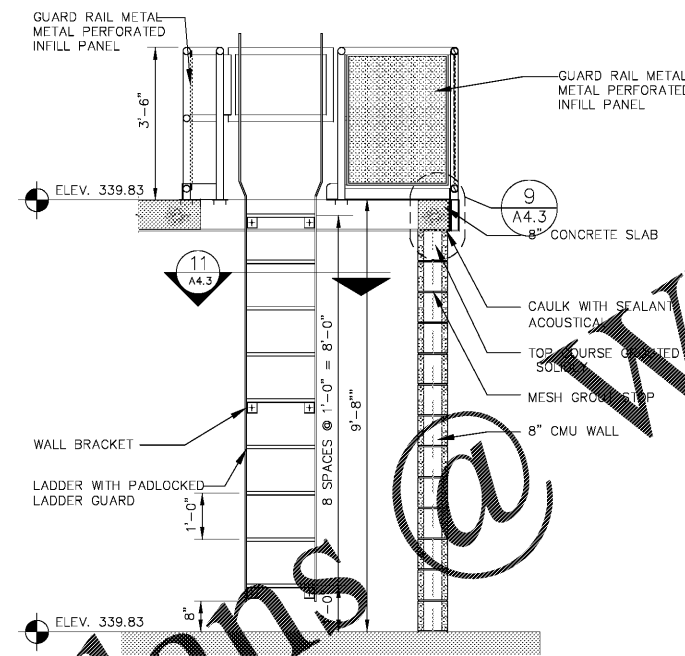
**REMOVABLE LOUVER SILL DETAIL AT GENERATOR ROOM** (14)  
SCALE: 1 1/2" = 1'-0"



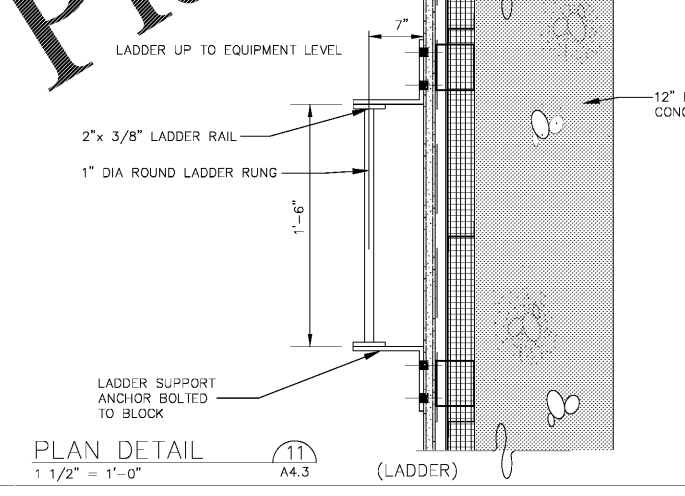
**PIPE PENETRATION DETAIL** (15)  
SCALE: 1 1/2" = 1'-0"



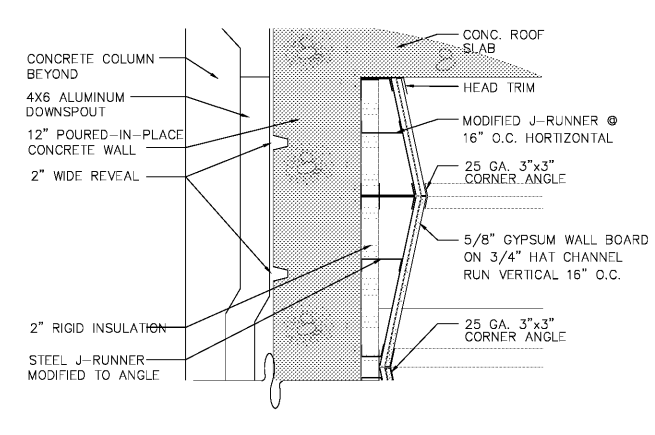
**DETAIL (9)**  
SCALE: 3" = 1'-0" A4.3



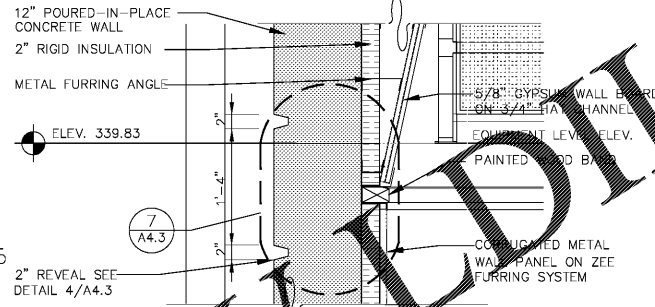
**LADDER (11)**  
SCALE: 1 1/2" = 1'-0" A4.3



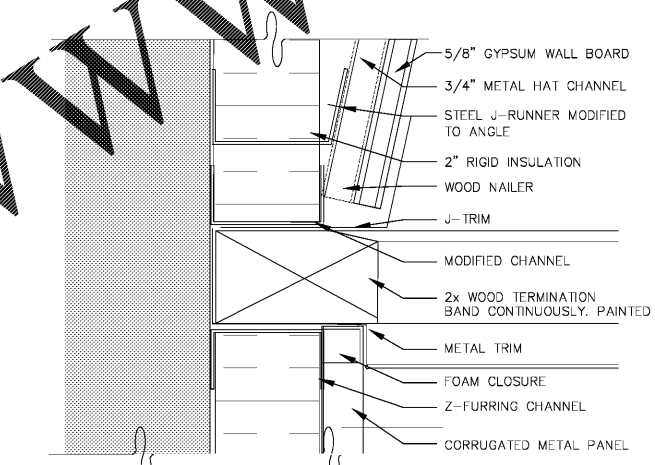
**LADDER PLAN DETAIL (11)**  
SCALE: 1 1/2" = 1'-0" A4.3



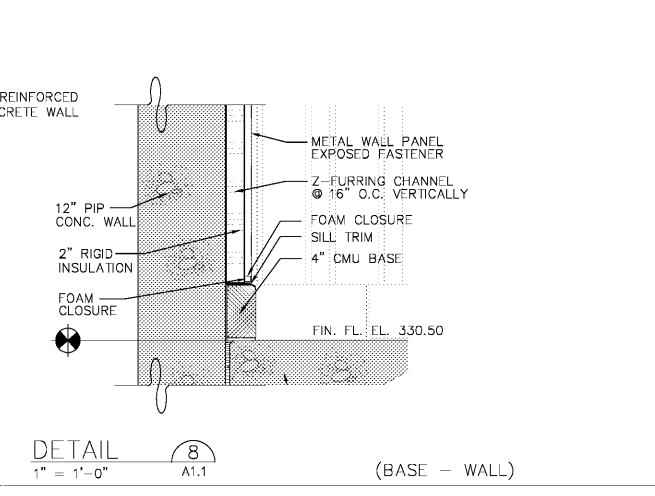
**DETAIL (5)**  
SCALE: 1" = 1'-0" A1.1



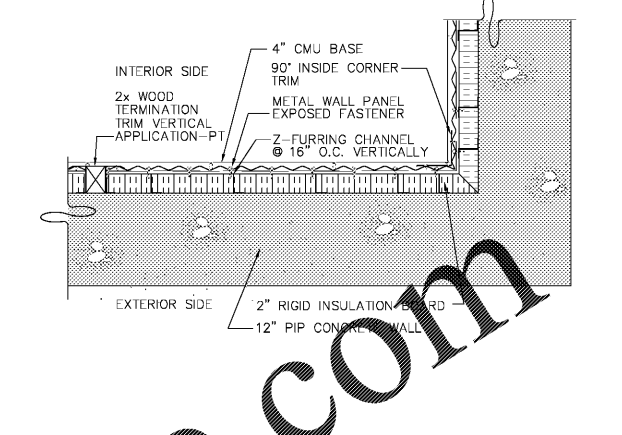
**DETAIL (7)**  
SCALE: 1" = 1'-0" A4.3



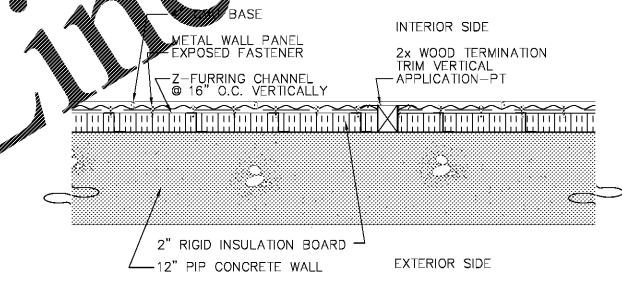
**DETAIL (6)**  
SCALE: 1" = 1'-0" A1.1



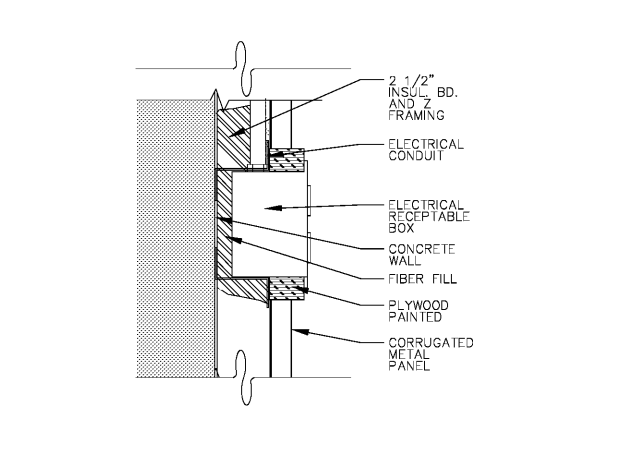
**DETAIL (8)**  
SCALE: 1" = 1'-0" A1.1



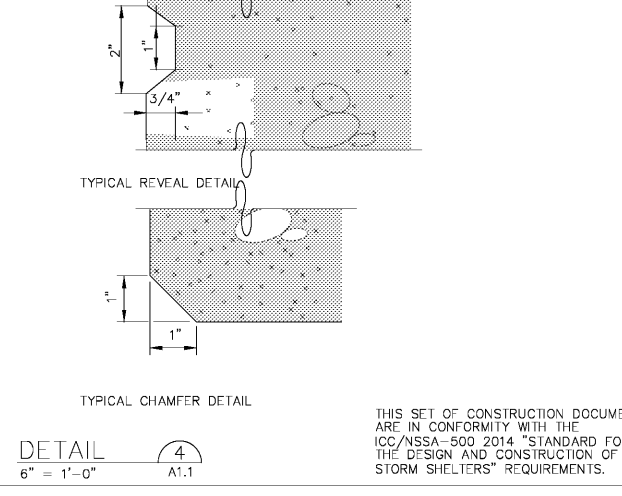
**CORRUGATED WALL PANEL PLAN DETAIL (1)**  
SCALE: 1" = 1'-0" A1.1



**CORRUGATED WALL PANEL PLAN DETAIL (2)**  
SCALE: 1" = 1'-0" A1.1



**DETAIL (3)**  
SCALE: 3" = 1'-0" A1.1



**TYPICAL REVEAL DETAIL**  
SCALE: 1" = 1'-0" A1.1

Order Plans @ WWW.LDOnline.com

**KHAFRA**

STATE OF ALABAMA  
 REGISTERED ARCHITECT  
 CHARLES W. RAINE  
 NO. 1945  
 BIRMINGHAM ALABAMA

NO.	DATE	REVISION	APPROVED
1	04-25-2018	REVISED FINAL ABC'S COMMENTS AND REELS PERK REVIEWS TO OMC COMMENTS	RSSS
2	06-13-2018	SECOND REVISED FINAL ABC'S COMMENTS AND REELS	RSSS
3	04-08-2019	ABC'S COMMENTS AND REELS	RSSS

**REUSE OF DOCUMENTS**  
 THIS DOCUMENT WITH THE IDEAS AND DESIGNS INCORPORATED HEREIN ARE AN INSTRUMENT OF SERVICE OF KHAFRA AND MUST NOT BE USED IN WHOLE OR IN PART FOR ANY OTHER PROJECT WITHOUT THE WRITTEN AUTHORIZATION OF KHAFRA

**PROJECT:** COMMUNITY STORM SHELTER  
**B.C. No.:** 2014346  
**FOR THE:** PERRY COUNTY COMMISSION  
 300 Washington Street, Meritt, Alabama  
 Perry County, Alabama 36756

**DATE:** APRIL 30, 2019

**DRWN. BY:** RDSS  
**DSCN. BY:** RDSS  
**CHKD. BY:** JTRY  
**APVD. BY:** CWRE

**SCALE:** AS SHOWN

**SHEET TITLE:** MARION STORM SHELTER DETAILS

**PROJECT No.:** 11MON01  
**DRAWING No.:** A4.3  
**B.C. Project No.:** 2014346

STRUCTURAL DRAWINGS ARE BASED ON ICC 500 "ICC/NSSA STANDAND FOR THE DESIGN AND CONSTRUCTION OF STORM SHELTERS." BASED ON THE "DESIGN WIND SPEED MAP FOR STORM SHELTERS," THE STRUCTURAL SYSTEMS FOR THE BUILDING WAS DESIGNED FOR ZONE IV (250 MILES PER HOUR) LOADS.

CONSTRUCTION DOCUMENTS