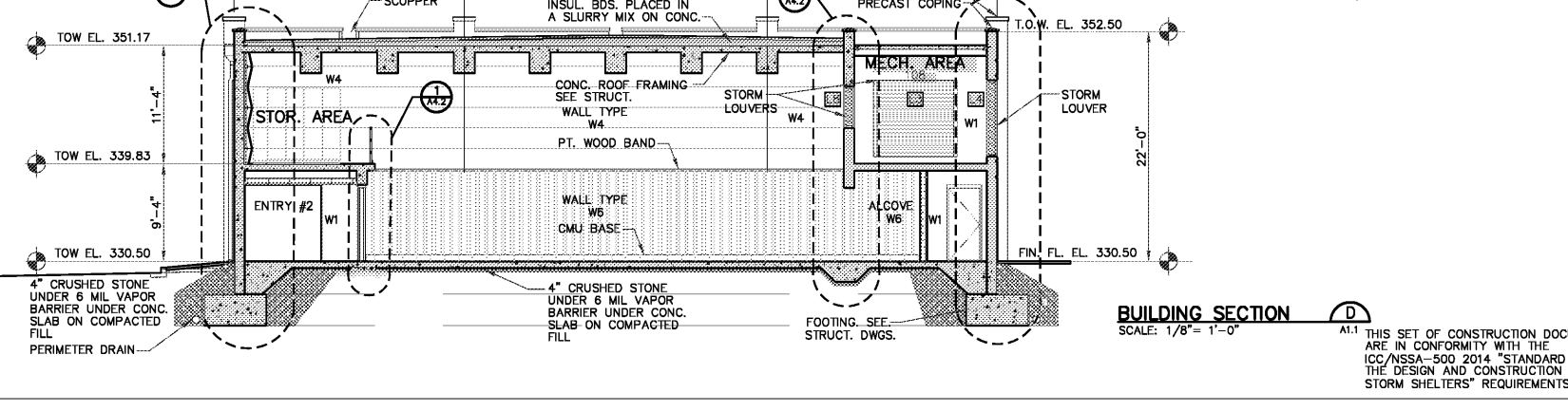
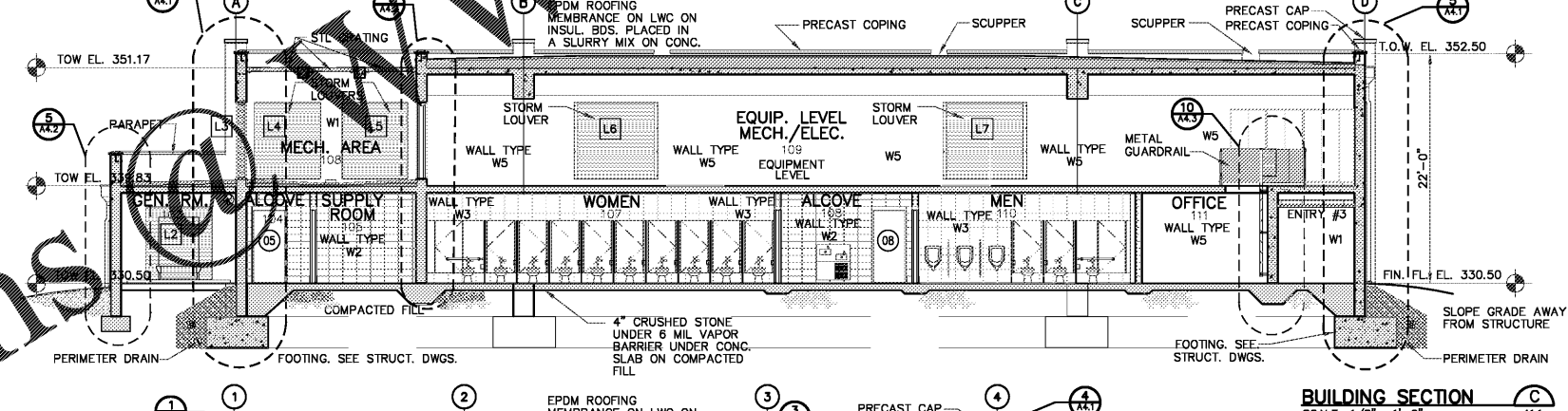
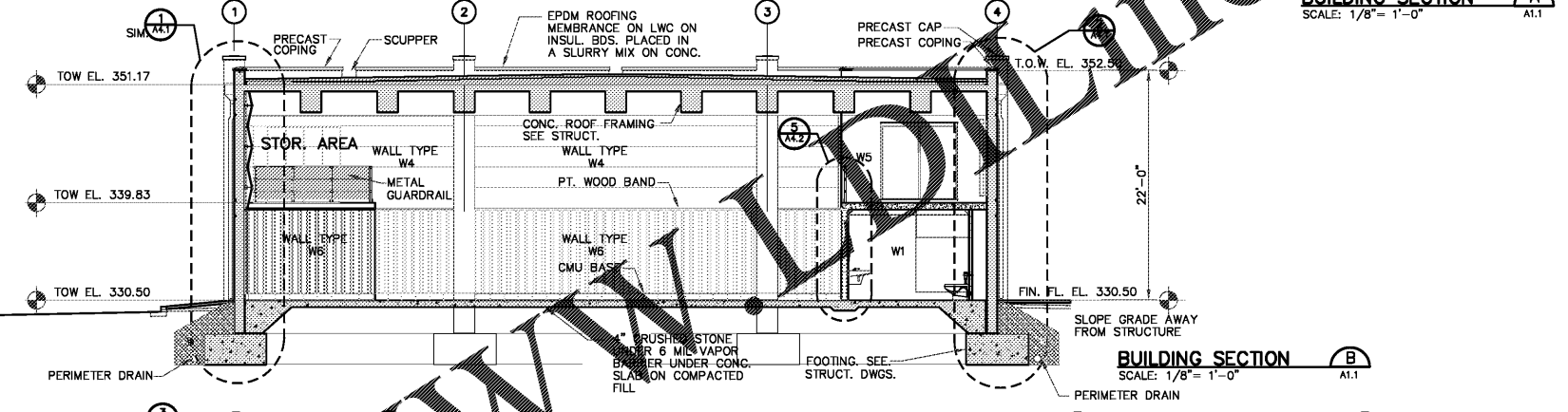
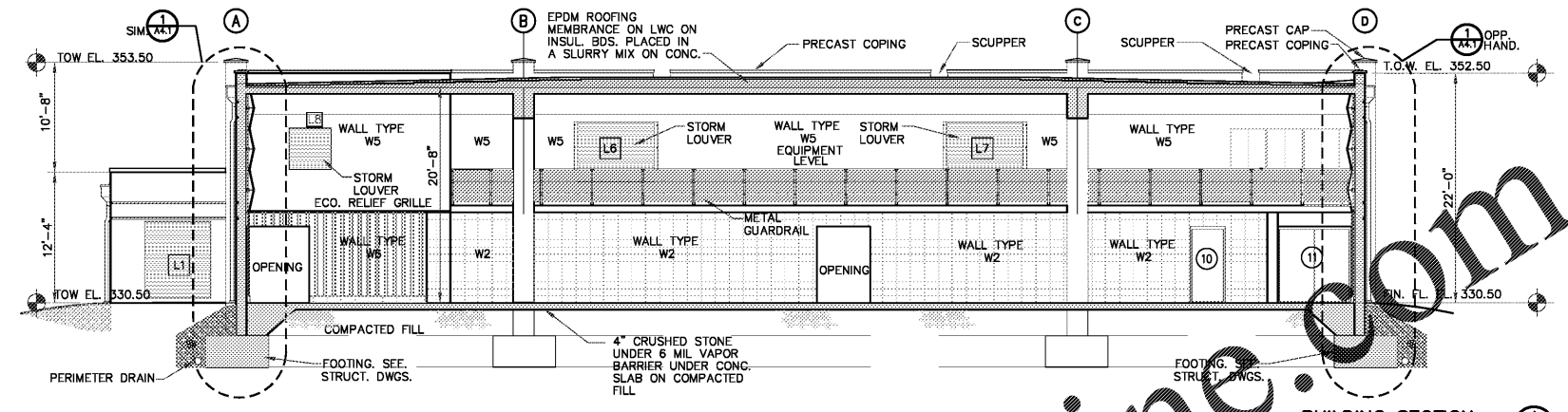


LAST SAVE: 04/15/2019 12:09 PM

FILE: B:\Projects\11MON01_PERRY COUNTY COMMUNITY SHELTERS\01-PERRY COUNTY COMMUNITY SHELTER - MARION\Sheet\A2.2 BUILDING SECTIONS.dwg 7/2019 1:00 AM PLOTTED BY: RBY - 5/20/19

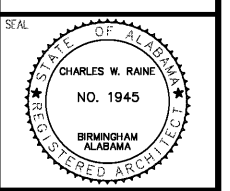
PARTITION TYPE AND DESCRIPTION

	W1	12" POURED IN PLACE REINFORCED CONCRETE WALL WITH A COMBINATION OF FINISHES. LIGHT AT 16" BANDS BETWEEN REVEALS AND OTHER AREAS WATER-WASHED FINISH, APPLY A WATER-WASH FINISH ON ALL EXPOSED SIDE.
	W2	8" STACK BOND CONCRETE MASONRY UNIT (CMU) - PAINTED
	W3	4" STACK BOND CONCRETE MASONRY UNIT (CMU) - PAINTED, LOCATED AT PLUMBING CHASE IN RESTROOMS.
	W4	12" POURED IN PLACE REINFORCED CONCRETE WALL WITH 2" RIGID INSULATION AND 5/8" GYPSUM WALL BOARD ON 7/8" HAT CHANNEL ON MODIFIED J-RUNNER @ 16" O.C. HORIZONTAL. SEE DETAILS 6&7/A4.3
	W5	12" POURED IN PLACE REINFORCED CONCRETE WALL WITH 2" RIGID INSULATION AND 5/8" GYPSUM WALL BOARD ON 7/8" HAT CHANNEL.
	W6	12" POURED IN PLACE REINFORCED CONCRETE WALL WITH 2" RIGID INSULATION BOARD AND Z FURRING CHANNEL.
	W7	12" STACK BOND CONCRETE MASONRY UNIT (CMU) - PAINTED, LOCATED IN RESTROOMS PLAVATILES WALL



Order Plans

WWW.Online.com



NO.	DATE	REVISION
1	04-25-2018	REVISED FINAL ABC'S COMMENTS AND REFILES
2	06-13-2018	PEER REVIEW REFILES TO OMC
3	04-08-2019	SECOND REVIEW REFILES
4		ABC'S COMMENTS AND REFILES

REUSE OF DOCUMENTS
THIS DOCUMENT WITH THE IDEAS AND DESIGNS INCORPORATED HEREIN ARE AN INSTRUMENT OF SERVICE AND MUST NOT BE USED IN WHOLE OR IN PART FOR ANY OTHER PROJECT WITHOUT THE WRITTEN AUTHORIZATION OF KHAFFRA

PROJECT: COMMUNITY STORM SHELTER FOR THE B.C. NO. 2014346 FOR THE PERRY COUNTY COMMISSION
300 Washington Street, Meridian, Alabama Perry County, Alabama 36076

DATE: APRIL 30, 2019
DRWN. BY: RDSS
USGN. BY: RDSS
CHKD. BY: CWRE
APVD. BY: CWRE
SCALE: 1/8" = 1'-0"

ARCHITECTURAL: MARION STORM SHELTER BUILDING SECTIONS
SHEET TITLE: MARION STORM SHELTER BUILDING SECTIONS

PROJECT No.: 11MON01
DRAWING No.: A2.2
B.C. Project No.: 2014346

STRUCTURAL DRAWINGS ARE BASED ON ICC 500 "ICC/NSSA STANDARD FOR THE DESIGN AND CONSTRUCTION OF STORM SHELTERS." BASED ON THE "DESIGN WIND SPEED MAP FOR STORM SHELTERS," THE STRUCTURAL SYSTEMS FOR THE BUILDING WAS DESIGNED FOR ZONE IV (250 MILES PER HOUR) LOADS.

CONSTRUCTION DOCUMENTS