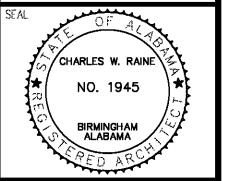


LAST SAVE: 04/15/2019 12:11 PM

FILE: B:\Projects\11MON01\11MON01_PERRY COUNTY COMMUNITY SHELTERS\01-PERRY COUNTY COMMUNITY SHELTER - MARION STORM SHELTER - A2.1 ELEVATIONS.dwg DATE: May 21/2019 1:02 AM PLOTTED BY: RDS

KHAFRA



SEAL

NO.	DATE	REVISION
1	04-25-2018	REVISED FINAL ABC'S COMMENTS AND REFILES
2	06-13-2018	PEER REVIEW REFILES TO OMC
3	04-08-2019	SECOND REVISION REFILES
4		ABC'S COMMENTS AND REFILES

REUSE OF DOCUMENTS
THIS DOCUMENT WITH THE IDEAS AND DESIGNS INCORPORATED HEREIN ARE AN INSTRUMENT OF SERVICE AND MUST NOT BE USED IN WHOLE OR IN PART FOR ANY OTHER PROJECT WITHOUT THE WRITTEN AUTHORIZATION OF KHAFRA

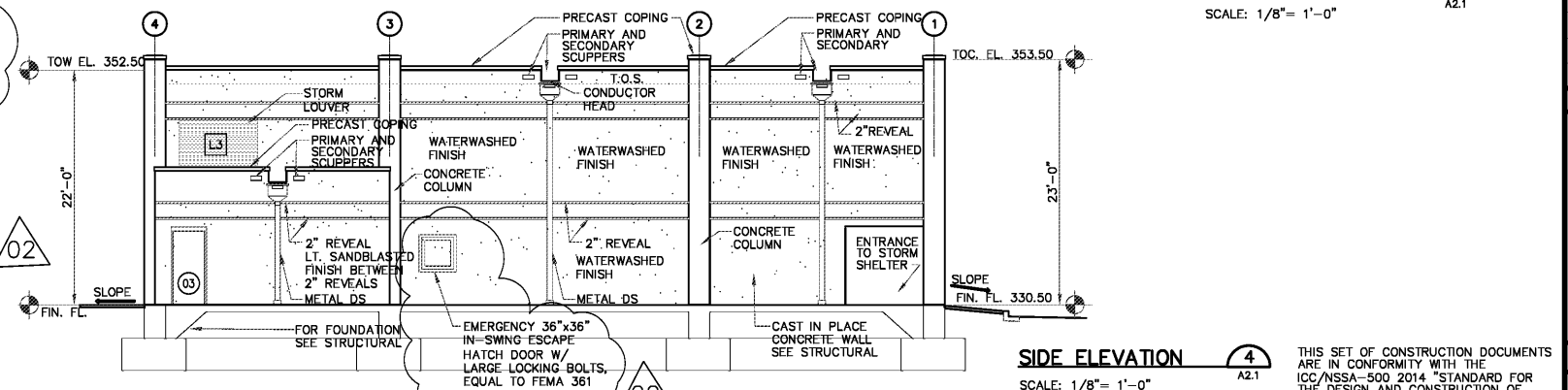
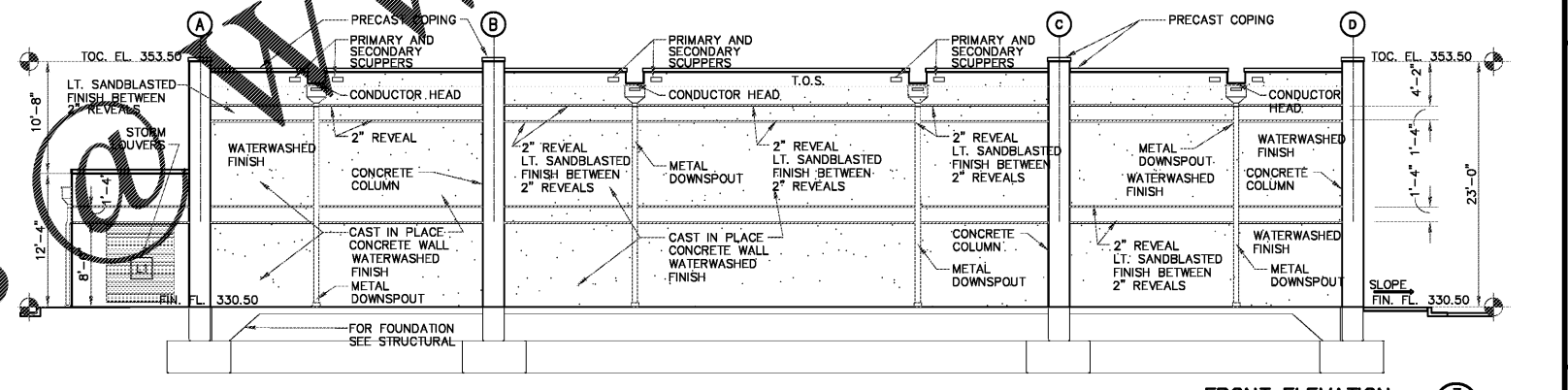
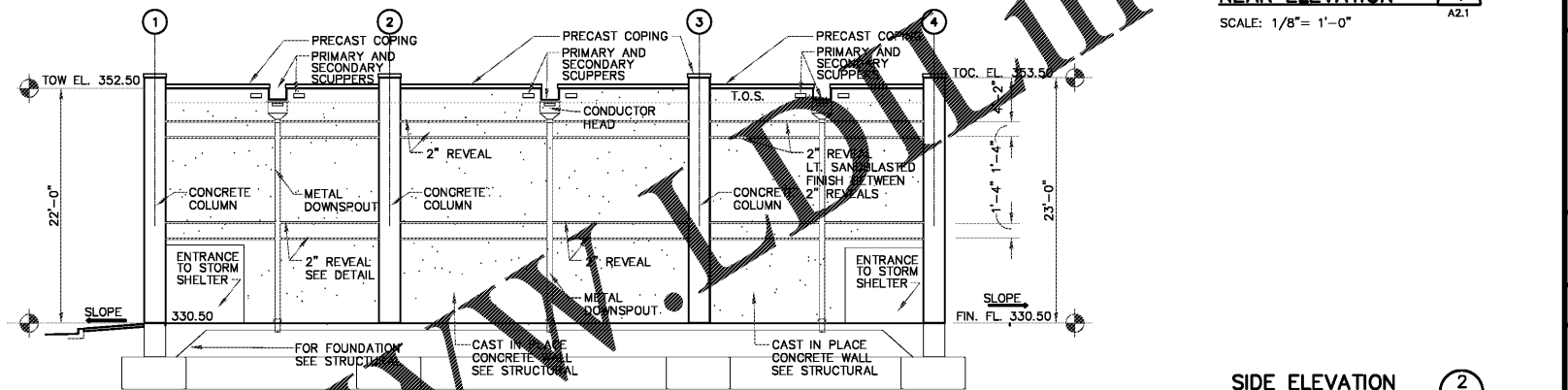
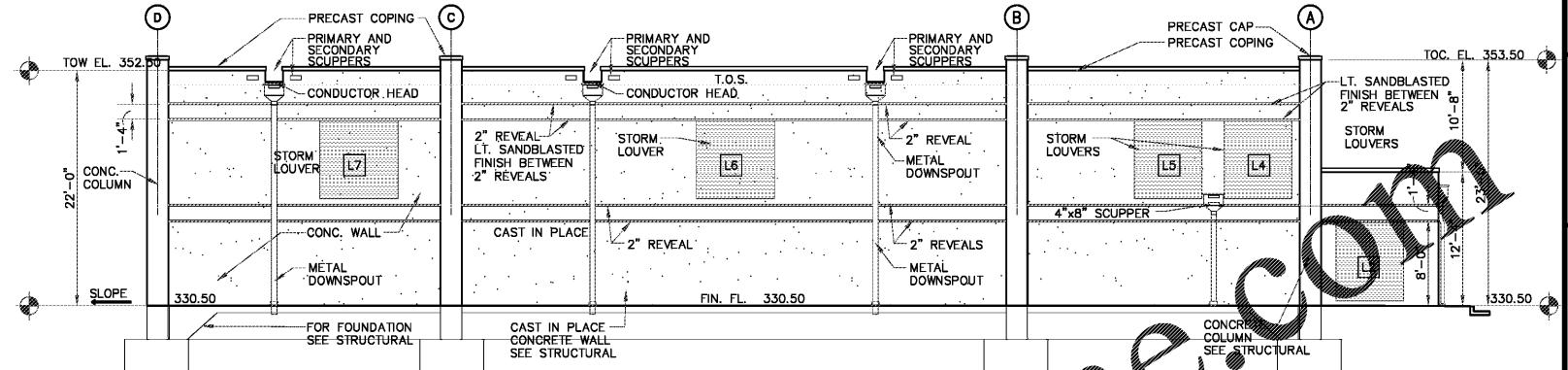
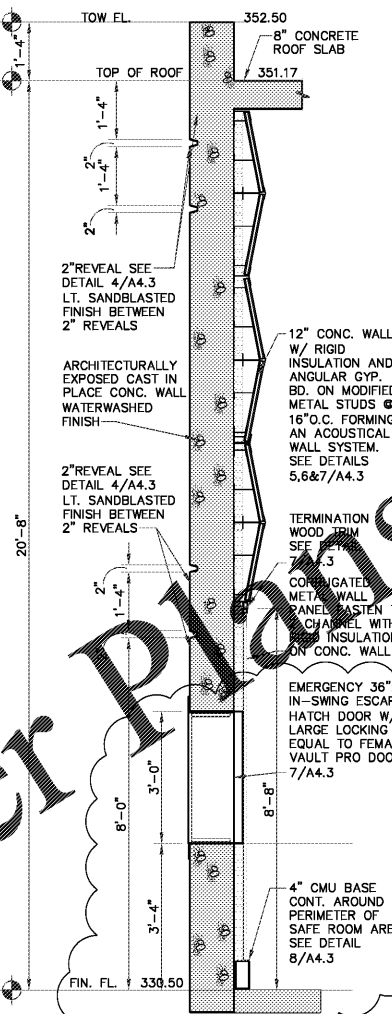
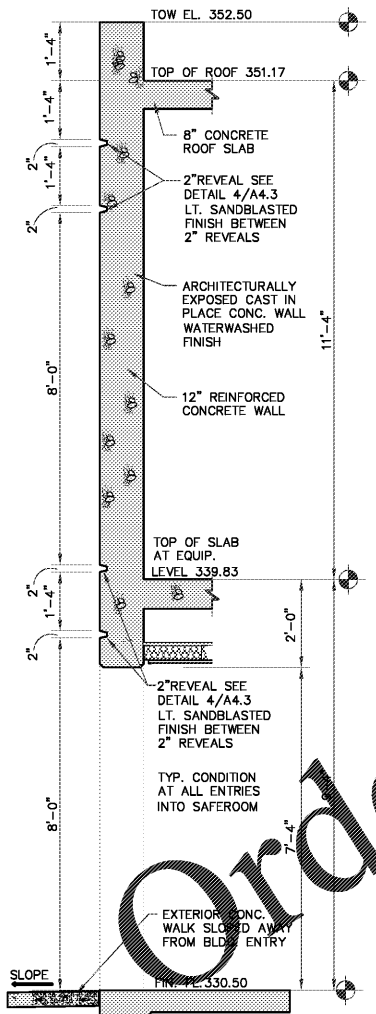
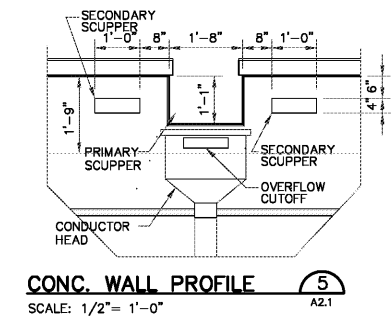
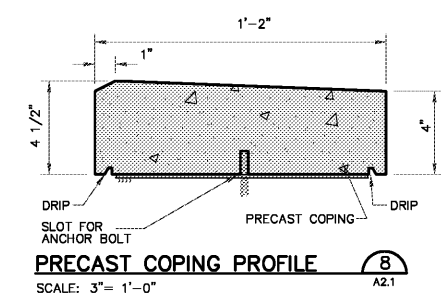
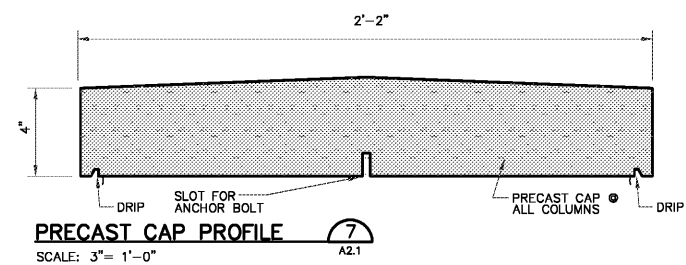
PROJECT: **COMMUNITY STORM SHELTER**
B.C. NO. 20 FOR THE 346
PERRY COUNTY COMMISSION
 300 Washington Street, Martin Alabama
 Perry County, Alabama 36976

DATE: APRIL 30, 2019
 DRWN. BY: RDSS
 USGN. BY: RDSS
 CKD. BY: CWRE
 APVD. BY: CWRE
 SCALE: 1/8" = 1'-0"

SHEET TITLE: **MARION STORM SHELTER ELEVATIONS**
 PROJECT No: 11MON01
 DRAWING No: **A2.1**

B.C. Project No. 2014346

CONSTRUCTION DOCUMENTS



STRUCTURAL DRAWINGS ARE BASED ON ICC 500 "ICC/NSSA STANDARD FOR THE DESIGN AND CONSTRUCTION OF STORM SHELTERS." BASED ON THE "DESIGN WIND SPEED MAP FOR STORM SHELTERS," THE STRUCTURAL SYSTEMS FOR THE BUILDING WAS DESIGNED FOR ZONE IV (250 MILES PER HOUR) LOADS.