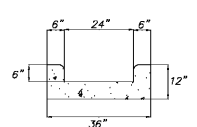
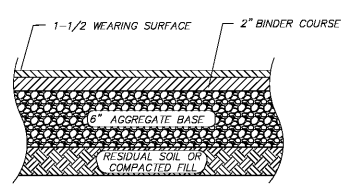


LAST SAVE: May/2/2019 9:47 PM
 PLOTTED BY: ROY STOKES
 9:50 PM
 MARON\Sheets\C3.0 CIVI Details
 PERRY COUNTY COMMUNITY SHELTERS\Drawings\PERRY COUNTY COMMUNITY SHELTERS
 R:\Engineer\T\WONG\PERRY COUNTY COMMUNITY SHELTERS\Drawings\PERRY COUNTY COMMUNITY SHELTERS



2' CONCRETE FLUME



STANDARD DUTY PAVING
N.T.S.

NOTES

CRUSHED STONE BASE SHOULD BE COMPACTED TO 100 PERCENT OF THE MAXIMUM DRY DENSITY AS DETERMINED BY THE MODIFIED PROCTOR COMPACTION TEST (ASTM 1557, METHOD D).

CRUSHED STONE AGGREGATE SHOULD MEET OR EXCEED REQUIREMENTS OF SECTION 825, TYPE B OF THE STATE OF ALABAMA DEPARTMENT OF TRANSPORTATION (ALDOT) STANDARD SPECIFICATIONS FOR ROAD AND BRIDGE CONSTRUCTION.

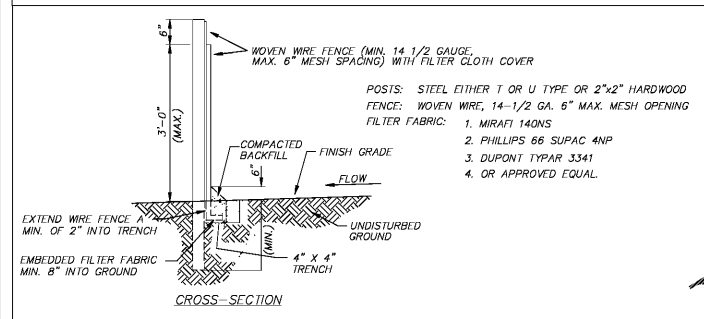
BITUMINOUS CONCRETE BINDER COURSE SHALL MEET OR EXCEED THE REQUIREMENTS OF SECTION 424B 2", 1" AGG FOR SUPERPAVE BITUMINOUS CONCRETE BINDER OF ALABAMA DEPARTMENT OF TRANSPORTATION.

BITUMINOUS CONCRETE WEARING COURSE SHALL MEET OR EXCEED THE REQUIREMENTS OF SECTION 424A 1", 1/2" AGG FOR SUPERPAVE BITUMINOUS CONCRETE WEARING COURSE OF ALABAMA DEPARTMENT OF TRANSPORTATION.

PAVEMENT DESIGN IS BASED ON A 20 YEAR PAVEMENT LIFE, CALIFORNIA BEARING RATIO (CBR) VALUE OF 5, AND SUBGRADE MODULUS (k) OF 125 PSI/INCH. SUBGRADE SHOULD MEET THESE REQUIREMENTS AS A MINIMUM.

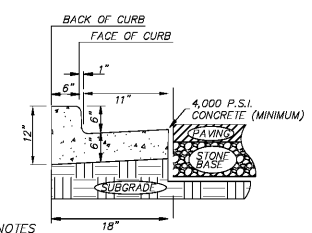
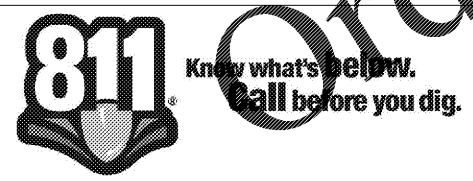
THIS PAVEMENT DETAIL IS PROVIDED FOR REFERENCE AND PERMITTING PURPOSES ONLY. THE CONTRACTOR SHALL VERIFY DESIGN DETAIL WITH A GEOTECHNICAL ENGINEER PRIOR TO INSTALLATION.

PAVING SPECIFICATION



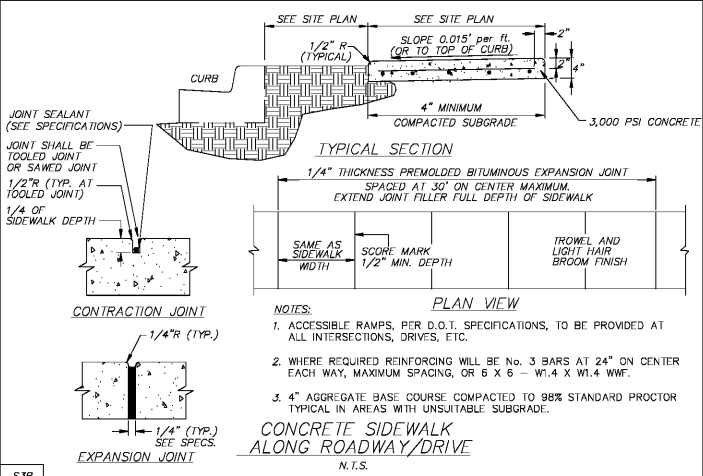
SILT FENCE DETAIL

- WOVEN WIRE FENCE TO BE FASTENED SECURELY TO FENCE POSTS WITH WIRE TIES OR STAPLES.
- FILTER CLOTH TO BE FASTENED SECURELY TO WOVEN WIRE FENCE WITH TIES SPACED EVERY 24" AT TOP AND MID SECTION.
- WHEN TWO SECTIONS OF FILTER CLOTH ADJOIN EACH OTHER THEY SHALL BE OVERLAPPED BY SIX INCHES AND FOLDED.
- MAINTENANCE SHALL BE PERFORMED AS NOTED IN THE EROSION CONTROL PLAN. COLLECTED MATERIAL SHALL BE REMOVED WHEN "BULGES" DEVELOP IN THE SILT FENCE.



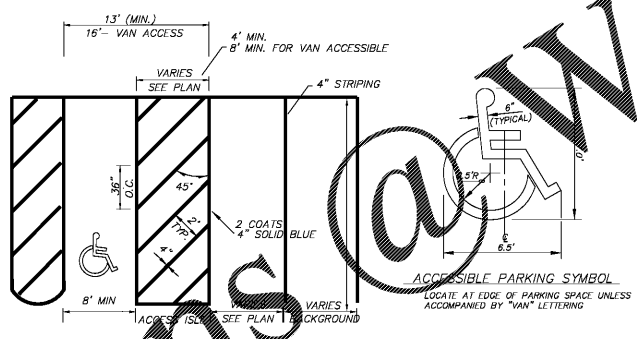
COMBINATION CURB AND GUTTER

- NOTES**
- EXPANSION JOINTS REQUIRED AT ALL STRUCTURES AND CURB RETURNS. 25 FOOT MAXIMUM DISTANCE BETWEEN EXPANSION JOINTS.
 - 3,000 PSI CONCRETE WITH SMOOTH FINISH.
 - COMPACT SUBGRADE TO 98% STANDARD PROCTOR.
 - SEE GEOTECHNICAL REPORT FOR ADDITIONAL INFORMATION.

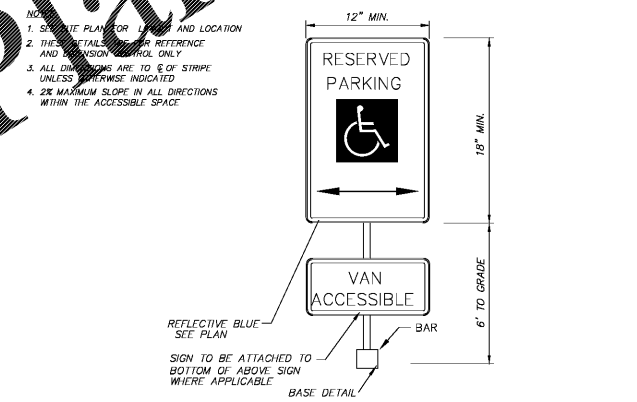


CONCRETE SIDEWALK ALONG ROADWAY/DRIVE
N.T.S.

S3B

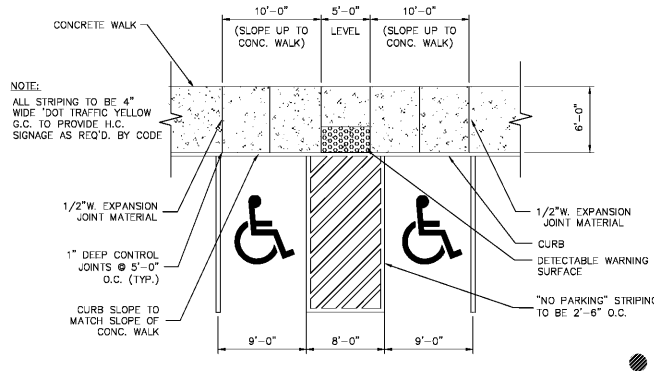


ACCESSIBLE PARKING SYMBOL
LOCAL: AT EDGE OF PARKING SPACE UNLESS ACCOMPANIED BY "VAN" LETTERING



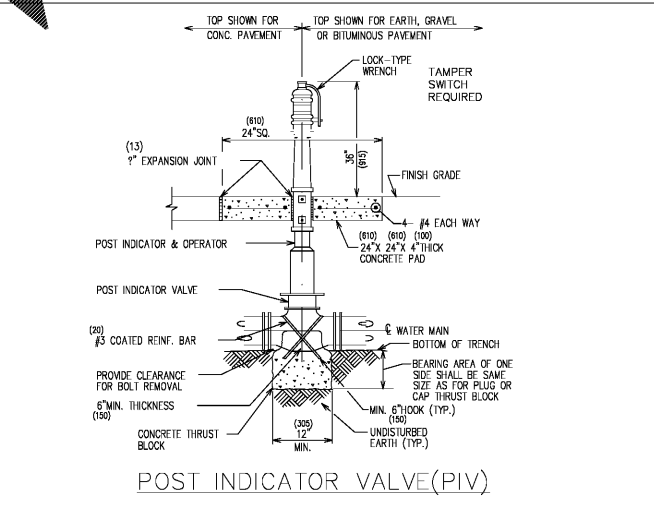
SIGNING & STRIPING DETAIL
N.T.S.

S50

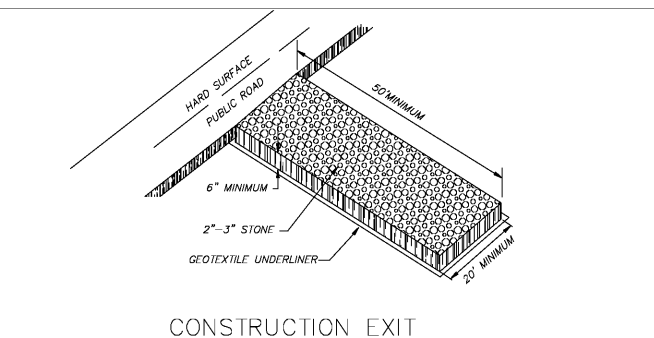


ACCESSIBLE RAMP IN SIDEWALK
N.T.S.

S3C

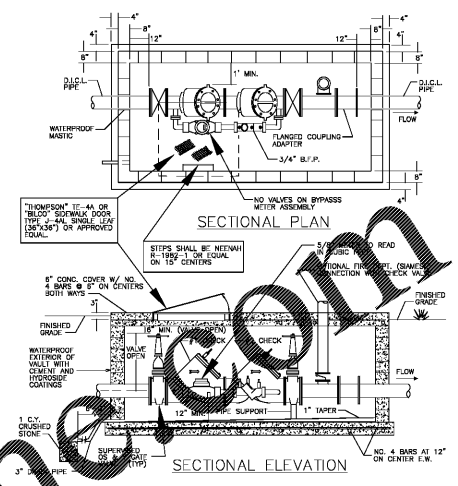


POST INDICATOR VALVE (PIV)



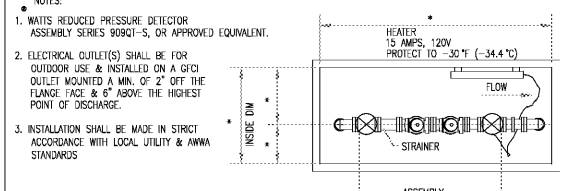
CONSTRUCTION EXIT

S3D



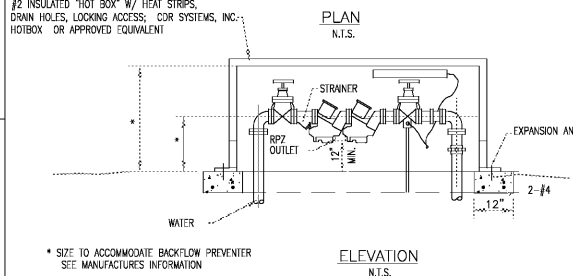
FIRE SERVICE DETECTOR DOUBLE CHECK VALVE DETAIL
NO SCALE

S3E

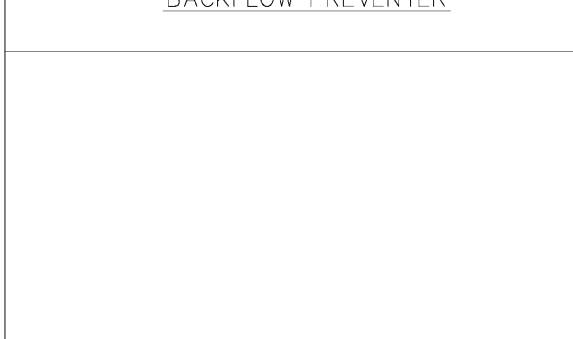


BACKFLOW PREVENTER
N.T.S.

S3F



S3G



S3H

SEAL

SEAL

NO.	DATE	REVISION	APPROVED
1	04-25-2018	REVISED FINAL	ROSS
2	06-13-2018	ABC'S COMMENTS AND REFS	ROSS
3	04-09-2019	SECOND REVISED FINAL	ROSS
4	04-09-2019	ABC'S COMMENTS AND REFS	ROSS

REUSE OF DOCUMENTS

THIS DOCUMENT WITH THE IDEAS AND DESIGNS INCORPORATED HEREIN ARE AN INSTRUMENT OF SERVICE OF KHAFRA AND MUST NOT BE USED IN WHOLE OR IN PART FOR ANY OTHER PROJECT WITHOUT THE WRITTEN AUTHORIZATION OF KHAFRA

PROJECT: COMMUNITY STORM SHELTER

B.C. 2018-0346

FOR THE PERRY COUNTY COMMISSION

300 Washington Street, Mobile, Alabama
Perry County, Alabama 36756

DATE: APRIL 30, 2019

DRWN. BY: GWP/N

DSGN. BY: GWP/N

CHKD. BY: BLHT

APVD. BY: BLHT

SCALE: NTS

SHEET TITLE: MARION STORM SHELTER CIVIL DETAILS

PROJECT No. 11MON01

DRAWING No. C3.0

B.C. Project No. 2014346

CONSTRUCTION DOCUMENTS