



STORE NUMBER: 4522
 800 EAST WEST CONNECTOR
 AUSTELL, GA
 PROJECT TYPE: Health Hub and Reset
 DEAL TYPE:
 CS PROJECT NUMBER: 134320

ARCHITECT OF RECORD



22 South College St., Suite 500, Durham, NC 27701
 T: 704.221.8200 F: 704.281.8700

www.littleonline.com

This drawing and the design shown are the property of Little Diversified Architectural Consulting. The reproduction, copying or other use of this drawing without their written consent is prohibited and any infringement will be subject to legal action.
 © Little 2019

CONSULTANT:



DEVELOPER:



SEAL:



REVISIONS:

NO.	DATE	DESCRIPTION

CVS PROJECT MANAGER: SB

DRAWING BY: WRC

DATE: 07-22-2019

JOB NUMBER: 121-12600-08

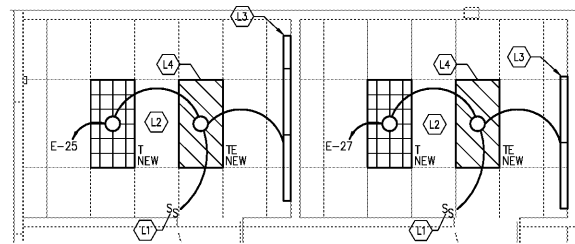
TITLE:

RETAIL HEALTH CENTER
 ELECTRICAL WORK - NEW

SHEET NUMBER:

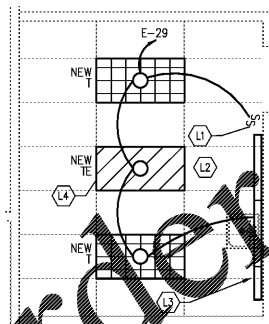
E9

COMMENTS:



1 RHC LIGHTING PLAN-NEW
 E9 SCALE: 1/4" = 1'-0"

NOTE:
 CONSIDER TALL CABINET AND OTHER MILLWORK ITEMS WHEN LOCATING LIGHTS AND HVAC (TYPICAL ALL RETAIL HEALTH CENTERS)



3 RHC LIGHTING PLAN-NEW
 E9 SCALE: 1/4" = 1'-0"

NOTE:
 CONSIDER TALL CABINET AND OTHER MILLWORK ITEMS WHEN LOCATING LIGHTS AND HVAC (TYPICAL ALL RETAIL HEALTH CENTERS)

SYMBOL LEGEND (THIS SHEET ONLY)		
MOUNTING HEIGHT IS FROM FINISHED FLOOR TO CENTERLINE OF DEVICE OR OUTLET. HEIGHT MAY VARY TO CONFORM WITH BUILDING CONSTRUCTION.		
SYMBOL	DESCRIPTION	MOUNTING HEIGHT
⊖	DUPLX RECEPTACLE OUTLET	AS NOTED
⊖	GROUND FAULT INTERRUPTER DUPLX RECEPTACLE OUTLET	AS NOTED
⊖	RECESSED CLOCK RECEPTACLE OUTLET	AS NOTED
⊖	GROUND FAULT INTERRUPTER QUAD RECEPTACLE OUTLET	AS NOTED
⊖	QUAD RECEPTACLE OUTLET	AS NOTED
⊖	TELEPHONE OUTLET, PROVIDE 1 - 1" C. (WITH PULLWIRE) TO 6" ABOVE SUSPENDED CEILING. REFER TO TELEPHONE WIRING DIAGRAM FOR FURTHER INFORMATION.	AS NOTED
⊖	DATA	AS NOTED
⊖	OCCUPANCY SENSOR LIGHT SWITCH- SEPERATE CIRCUIT FROM STORE & OFFICE	4" A.F.F.
⊖	PUSH BUTTON	AS NOTED
⊖	JUNCTION BOX W/ COVERPLATE - WALL MOUNTED	AS NOTED
NOTE: UNLESS OTHERWISE NOTED ALL OUTLETS & J-BOXES TO BE LOCATED 18" A.F.F. COLOR RECEPTACLES TO BE "WHITE". REVIEW ELECTRICAL NOTES TO VERIFY CONDITIONS PER ELECTRICAL LEGEND.		

NOTES BY SYMBOL (RHC LIGHTING):

- L1 INSTALL HOSPITAL GRADE CABLING FOR THESE SWITCHES. MAY USE RIGID METAL CONDUIT OR TYPE HCF-90 CABLE (MC CABLE IS NOT ACCEPTABLE).
- L2 REFER TO SHEET E11 FOR LIGHTING FIXTURE SCHEDULE.
- L3 UNDERCABINET LIGHT SUPPLIED WITH MILLWORK. INSTALLED BY ELECTRICAL CONTRACTOR. REF. SYMBOL NOTE C1/E3.
- L4 PROVIDE UNLATCHED WIRING TO EMERGENCY FIXTURE BATTERY CHARGER. EMERGENCY FIXTURE WILL OPERATE AS A SWITCHES UNIT SO LAMP CAN BE TURNED OFF WHILE CHARGER MAINTAINS BATTERY AT PROPER VOLTAGE OR BY MANUAL SWITCH IN EVENT OF A POWER OUTAGE. EMERGENCY FIXTURE WILL BE ACTIVATED BY SHEET E1 FOR LIGHTING FIXTURE SCHEDULE.

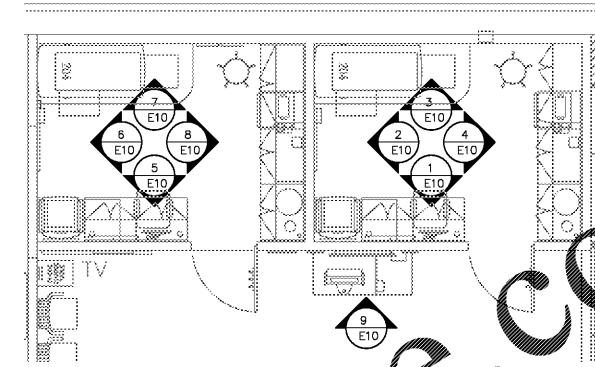
NOTE:
 PROVIDE HOSPITAL GRADE WIRING, RECEPTACLES AND SWITCHES FOR THE "RETAIL HEALTH CENTER". INSTALL WIRING AND DEVICES IN ACCORDANCE WITH NEC ARTICLE 517.

NOTE:
 REFER TO ELECTRICAL ELEVATIONS BELOW FOR ADDITIONAL DIMENSION INFORMATION.

NOTE:
 REFER TO LOW VOLTAGE SPEC MANUAL (REDBOOK) FOR ADDITIONAL INFORMATION.

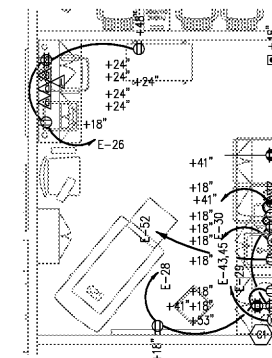
NOTES BY SYMBOL (RHC POWER):

- C1 INSTALL FLUSH WALL-MOUNTED JUNCTION BOX FOR UNDER-CABINET LIGHTS SUPPLIED WITH MILLWORK AND INSTALLED BY CONTRACTOR. CONNECT TO RHC CEILING LIGHTING CIRCUIT WITH 2#10 & 1#10(G) - 3/4" RIGID METAL CONDUIT OR TYPE HCF-90 CABLE.



2 RHC POWER PLAN-NEW
 E9 SCALE: 1/4" = 1'-0"

NOTE:
 INSTALL HOSPITAL GRADE, ISOLATED GROUND RECEPTACLES SIMILAR TO LEVITON #8300-IG TYPICAL FOR ALL RECEPTACLES IN RETAIL HEALTH CENTERS. CABLING FOR THESE RECEPTACLES MAY USE RIGID METAL CONDUIT OR TYPE HCF-90 CABLE (MC CABLE IS NOT ACCEPTABLE).



4 RHC POWER PLAN-NEW
 E9 SCALE: 1/4" = 1'-0"

NOTE:
 INSTALL HOSPITAL GRADE, ISOLATED GROUND RECEPTACLES SIMILAR TO LEVITON #8300-IG TYPICAL FOR ALL RECEPTACLES IN RETAIL HEALTH CENTERS. CABLING FOR THESE RECEPTACLES MAY USE RIGID METAL CONDUIT OR TYPE HCF-90 CABLE (MC CABLE IS NOT ACCEPTABLE).

Order Plans @ WWW.LDILLINE.COM