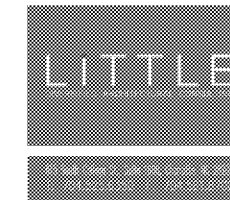




**STORE NUMBER:** 4522  
 800 EAST WEST CONNECTOR  
 AUSTELL, GA  
**PROJECT TYPE:** Health Hub and Reset  
**DEAL TYPE:**  
**CS PROJECT NUMBER:** 134320

**ARCHITECT OF RECORD**



www.littleonline.com

This drawing and the design thereon are the property of LITTLE ARCHITECTURE. No reproduction, copying or other use of this drawing without prior written consent is permitted and any reproduction will be subject to legal action.

**CONSULTANT:**

**DEVELOPER:**



**SEAL:**



**REVISIONS:**

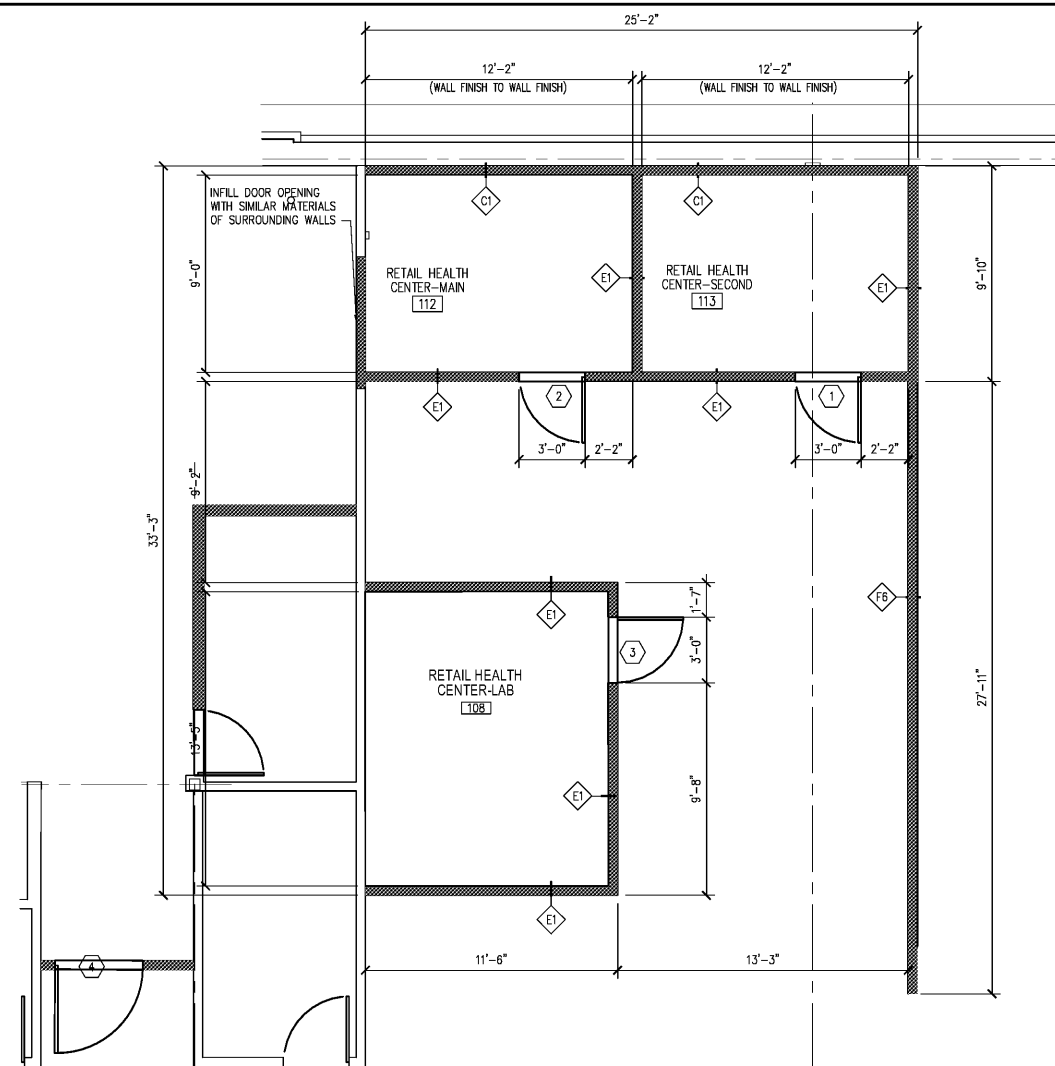
**CVS PROJECT MANAGER:** SB  
**DRAWING BY:** JC  
**DATE:** 07-22-2019  
**JOB NUMBER:** 121-12600-08

**TITLE:**  
 RETAIL HEALTH CENTER  
 ENLARGED PLANS & DETAILS

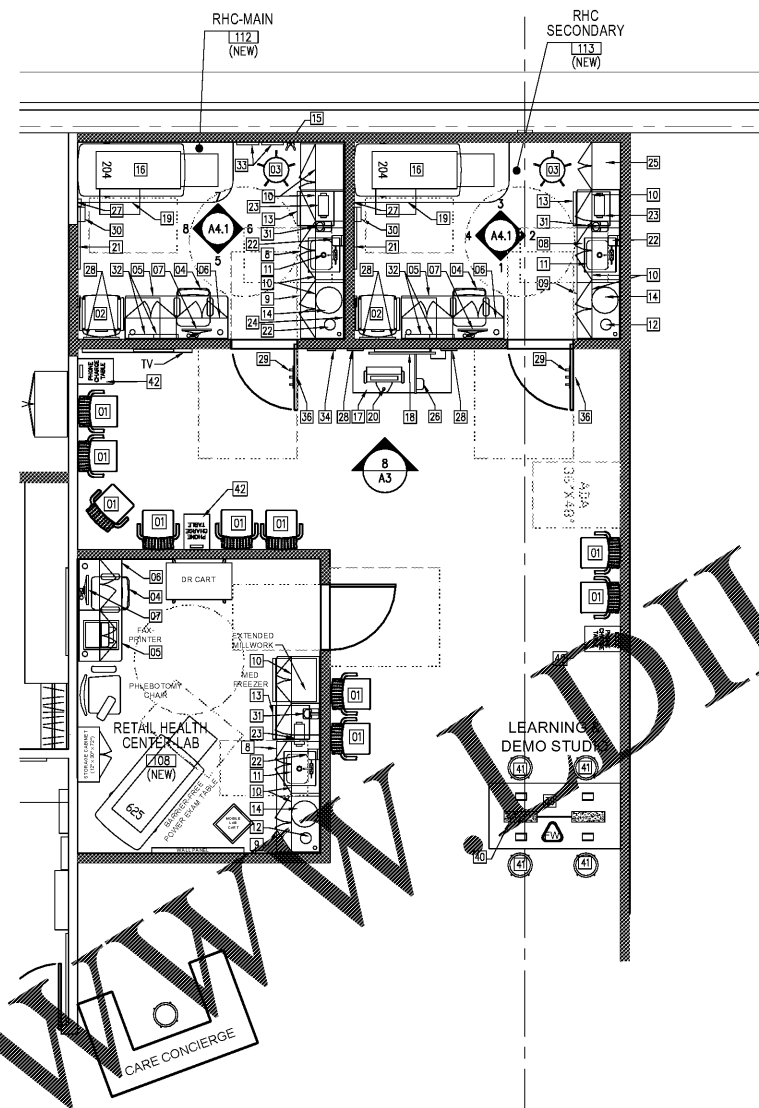
**SHEET NUMBER:**

**A4**

**COMMENTS:**



**1 RHC ENLARGED FLOOR PLAN**  
 A4 1/4" = 1'-0"

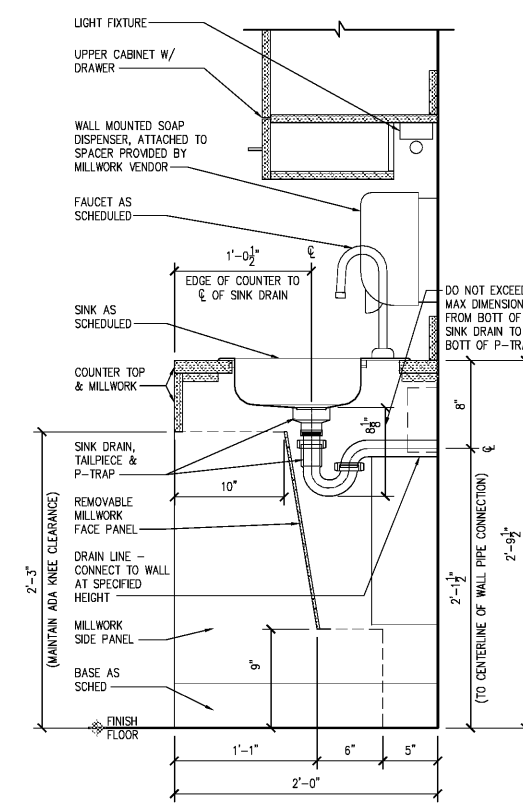


**2 RHC ENLARGED FIXTURE PLAN**  
 A4 1/4" = 1'-0"

**NOTES**  
 1. VERIFY ALL WORK AND MEASUREMENTS IN FIELD BETWEEN CVS PROJECT MANAGER AND GENERAL CONTRACTOR PRIOR TO ANY WORK BEING DONE.  
 2. CLEAN ALL FINISHED SURFACES (GLASS, FRAMING, LAMINATE, CARPET, ETC.) AT PROJECT COMPLETION THROUGHOUT ENTIRE STORE.

**LEGEND**  
 --- EXISTING PARTITION TO REMAIN  
 --- NEW PARTITION  
 # KEY NOTE DESIGNATION  
 XX WALL TYPE IDENTIFIER RE: PARTITION TYPES  
 XX DOOR TYPE IDENTIFIER - REFERENCE DOOR SCHEDULE  
 A COLUMN GRID

WELLNESS/RHC FURNITURE/FIXTURE SCHEDULE					
TAG	DESCRIPTION	SUPPLIED BY	INSTALLED BY	DESCRIPTION	INSTALLED BY
01	CLINIC WAITING CHAIRS	CVS	GC	18" DEEP STORAGE CABINET (LOCATE IN SECONDARY CLINIC ONLY) (E2) FINISH	CVS GC
02	PATIENT WAITING CHAIR	CVS	GC	HAND SANITIZER DISPENSER	CVS TOPCON
03	MEDICAL ROLLING STOOL	CVS	GC	CURTAIN THE BACK (SINGLE HOOK)	CVS GC
04	NURSE PRACTITIONER'S CHAIR	CVS	GC	3 COAT HOOK (RETRACTABLE)	CVS GC
05	NURSE PRACTITIONER'S DESK (W/ UNDERMOUNT MONITOR SHELF & PRINTER CABINET) (E2) FINISH (E2) TOP	CVS	GC	BP INFLATION SYSTEM BASKET	CVS TOPCON
06	NURSE PRACTITIONER'S UPPER CABINET (EACH W/ DRAWER) (E2) FINISH (E2) TOP	CVS	GC	RECOVERY CONTAINER W/ MOUNTING BRACKET & LOCK	CVS TOPCON
07	COMPUTER MONITOR W/ TOP MOUNTED MONITOR ARM	CVS	GC	WALL MOUNTED FILE FOLDER - MOUNT TO SUPPORT 10 LBS.	CVS TOPCON
08	RECYCLING BASKET (E2) FINISH (E2) TOP	CVS	GC	BLACK FRAMES (SIZE AS INDICATED) TOTAL 3	CVS GC
09	BASE CABINET W/ FULL DRAWER & SHORT DRAWER (E2) FINISH	CVS	GC	MINUTE CLINIC HOURS SIGN	CVS TOPCON
10	UPPER WALL CABINET UNITS W/ 2 ADJUSTABLE SHELVES, DRAWER & UNDER CABINET LIGHT FIXTURE (E2) FINISH	CVS	GC	BROCHURE HOLDER - WALL MOUNT TO SUPPORT 20 LBS.	CVS TOPCON
11	17-1/2"x19"x4-1/2" STAINLESS STEEL SINK & FAUCET	CVS	GC	CLINIC DOOR SIGN	CVS GC
12	TRASH HOLE	CVS	GC	GRAPHICS PANEL (19"x27-1/2")	CVS GC
13	UNDERCOUNTER REFRIGERATOR	CVS	GC	ARTITALIA CARE CONCIERGE DESK - ITEM # CVS-0175	CVS GC
14	DRAIN PUMP LOCATION IF REQUIRED	CVS	GC	ARTITALIA LEARNING TABLE - ITEM # CVS-0140	CVS GC
15	COAT HOOKS	CVS	TOPCON	ARTITALIA PLANTER - ITEM # CVS-0142	CVS GC
16	EXAMINATION TABLE: MODEL #204	CVS	GC	LCD MONITOR (PEERLESS FLAT WALL MOUNT SF650)	CVS TOPCON
17	DOUBLE SIGN IN TABLE (E2) FINISH	CVS	GC	PRIVACY CURTAIN - PROVIDE CURTAIN AND TRACK. PROVIDE ALL REQUIRED HARDWARE FOR COMPLETE INSTALLATION.	CVS GC
18	17-1/2"x19"x4-1/2" STAINLESS STEEL SINK & FAUCET	CVS	GC	BARRIER FREE POWER EXAM TABLE	CVS GC
19	UPPER WALL CABINET UNITS W/ 2 ADJUSTABLE SHELVES, DRAWER & UNDER CABINET LIGHT FIXTURE (E2) FINISH	CVS	GC	BARIBIATRIC CHAIR MFG: LESRO AVON ITEM: SOS 265400	CVS GC
20	17-1/2"x19"x4-1/2" STAINLESS STEEL SINK & FAUCET	CVS	GC	3 DRAW FILING CABINET MFG: AIS ITEM # SOS 269880	CVS GC
21	34" INTEGRATED WALL PANEL	CVS	GC	2 DOOR STORAGE CABINET MFG: AIS ITEM # SOSD 269885	CVS GC
22	SOAP DISPENSER (BOTTOM OF DISPENSER MOUNTED AT 3'-3" AFF.)	CVS	GC	TABLE MFG: AIS ITEM # SOS 265930	CVS GC
23	PAPER TOWEL DISPENSER (MOUNT BELOW UPPER CABINET)	CVS	GC	MENU BOARD	CVS GC
24	LICENSE WALLFRAME (LOCATED IN MAIN CLINIC ONLY)	CVS	GC		



NOTE: ALL DRAIN PLUMBING MUST BE CONCEALED BEHIND FACE PANEL.  
 NOTE: REFER TO PLUMBING DWGS FOR MORE DETAIL.

**3 SINK PLUMBING SECTION**  
 A4 SCALE: 1 1/2" = 1'-0"