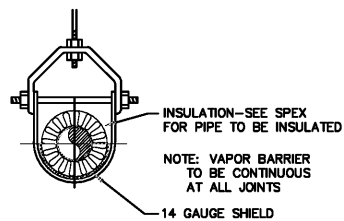
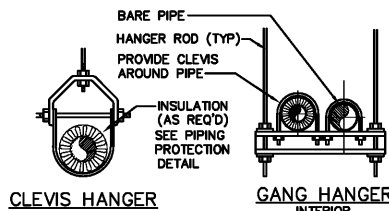


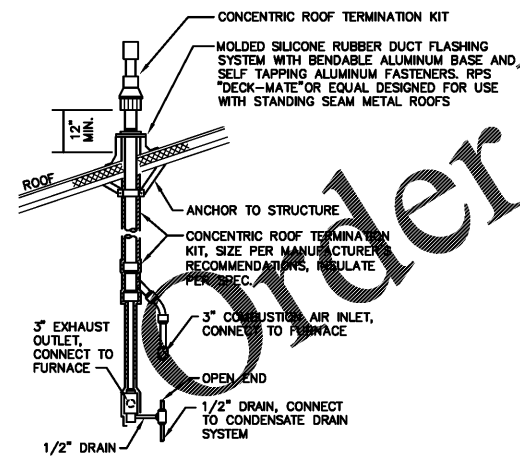
BRANCH DUCT CONNECTION DETAILS
NO SCALE



INSULATED PIPING PROTECTION DETAILS
NO SCALE



PIPING SUPPORT DETAILS
NO SCALE



- NOTES:
1. MAINTAIN MINIMUM CLEARANCES AROUND VENTS AND EQUIPMENT PER LOCAL AND STATE CODES.
2. INSTALL VENT KIT PER MANUFACTURER'S INSTRUCTIONS.

FURNACE GAS VENT/COMBUSTION AIR INTAKE DETAIL
NO SCALE

SPLIT SYSTEM AIR CONDITIONER SCHEDULE														
MARK	NOM. TONS	SYSTEM COOLING (R-410A)*					INDOOR FURNACE UNIT			BASIS OF DESIGN: TRANE ①②				
		TOTAL MBH	SEN.	DBT	EAT	SEER/EER	INPUT MBH	OUTPUT MBH	SA CFM	ESP IN. W.C.	OA CFM	FURNACE UNIT	OUTDOOR COND. UNIT	DX-COIL
AC/CU-1	2	23.5	18.2	78	64	15.0/12.5	40	39	700	0.5	60	SBV2B040U	4TR4024	4PXABU24BS
AC/CU-2	4	45.3	37.0	75	63	14.5/12.0	80	78	1725	0.5	70	SBX2C080U	4TR4048	4PXACU48BS
AC/CU-3	4	45.3	37.0	77	64	14.5/12.0	80	78	1650	0.5	95	SBX2C080U	4TR4048	4PXACU48BS

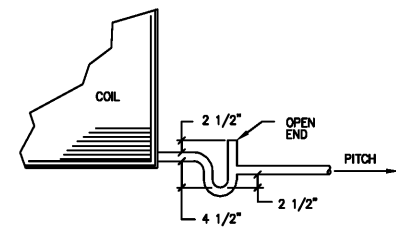
* REQUIRED COOLING - UNIT CAPACITIES ARE AT 95°F DB OUTDOOR AMBIENT.
① PROVIDE AN ION GENERATOR EQUAL TO GLOBAL PLASMA SOLUTIONS GPS-2400-3 MOUNTED IN FAN SECTION OF EACH AC UNIT.
② PROVIDE CONCENTRIC VENT KIT.

FANS									
MARK	FAN DATA			DESIGN HP/WATTS	MAX. SONES	CONTROL	TYPE	BASIS FOR DESIGN	REMARKS
	CFM	SP WC	RPM						
F-TE-1	75	0.25	884	-/14	0.4	①	CF	GREENHECK SP A90	SSC MOUNTED AT FAN, CG
F-TE-2	75	0.25	884	-/14	0.4	①	CF	GREENHECK SP A90	SSC MOUNTED AT FAN, CG
F-TE-3	75	0.25	884	-/14	0.4	①	CF	GREENHECK SP A90	SSC MOUNTED AT FAN, CG
F-JAN-1	60	0.25	818	-/11	0.3	①	CF	GREENHECK SP A90	SSC MOUNTED AT FAN, CG
F-VAULT-1	300	0.25	1117	-/80	1.3	③	ILC	GREENHECK CSP-A390	SSC MOUNTED AT FAN

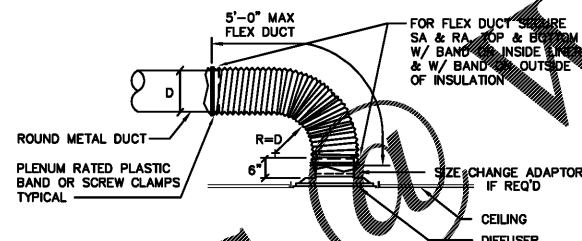
CF = CEILING EXHAUST FAN
ILC = INLINE CABINET
SSC = SOLID STATE SPEED CONTROLLER
CG = CEILING GRILLE
BS = BIRD SCREEN
DS = DISCONNECT SWITCH
BDD = BACKDRAFT DAMPER

① INTERLOCK WITH DIV. 16 LIGHT SWITCH
② LINE VGT TSTAT FURNISHED & INSTALLED BY DIV. 15, WIRED BY DIV. 16.
③ INTERLOCK WITH DIV. 16 VAULT LIGHT SWITCH

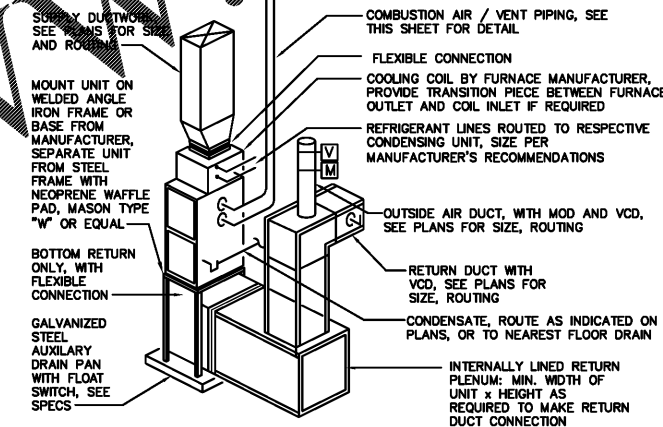
ELECTRIC HEATER SCHEDULE					
MARK	TYPE	KW	CFM	NOTES	BASIS OF DESIGN
EWH-1	ELECTRIC WALL HEATER	3	245	INTEGRAL T'STAT, RECESSED	REDD-148H SERIES



CONDENSATE DRAIN TRAP DETAIL
SCALE: NONE

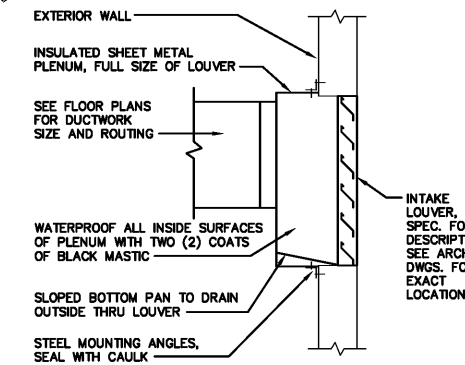


TYPICAL DIFFUSER CONNECTION DETAIL
NO SCALE

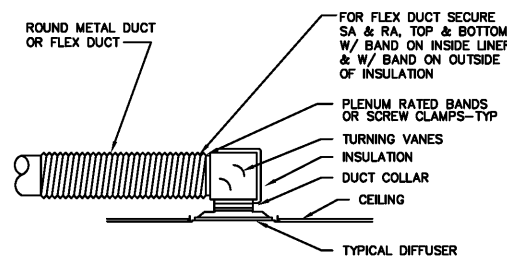


- NOTES:
1. SEE SPECIFICATIONS FOR ADDITIONAL REQUIREMENTS.
2. INSTALL PER MANUFACTURER'S RECOMMENDATIONS.
3. PROVIDE MANUFACTURER'S RECOMMENDED SERVICE/OPERATING CLEARANCES.
4. PROVIDE FILTER ACCESS WITH REMOVABLE METAL ENCLOSURE WITH HANDLE PROVIDED BY UNIT MANUFACTURER

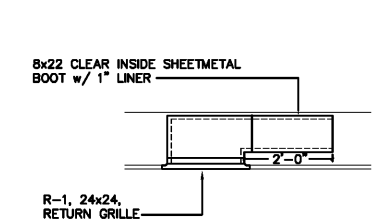
TYPICAL FLOOR MOUNTED AIR HANDLER DETAIL
NO SCALE



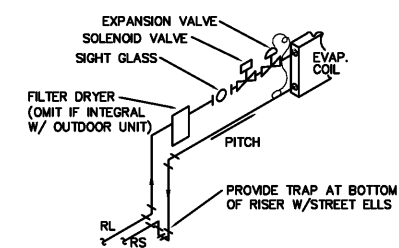
WALL LOUVER DETAIL
NO SCALE



DIFFUSER CONNECTION DETAIL LOW CLEARANCE
NO SCALE



RETURN GRILLE w/LINED BOOT
NO SCALE



DX COIL CONNECTION DETAIL
NO SCALE

AC LEGEND					
DUCTWORK			DUCTWORK		
DOUBLE LINE	SINGLE LINE	DESCRIPTION	DOUBLE LINE	SINGLE LINE	DESCRIPTION
12x6	12x6	DUCT (WIDTH x DEPTH)	[Symbol]	[Symbol]	SQUARE TURN WITH VANE ELBOW
[Symbol]	[Symbol]	DUCT TURNED UP (SUPPLY)	[Symbol]	[Symbol]	FLEXIBLE CONNECTOR
[Symbol]	[Symbol]	DUCT TURNED DOWN (SUPPLY)	[Symbol]	[Symbol]	DUCT WITH INTERNAL LINING
[Symbol]	[Symbol]	RISE IN DIRECTION OF AIR FLOW	[Symbol]	[Symbol]	FLEXIBLE AIR DUCT
[Symbol]	[Symbol]	DROP IN DIRECTION OF AIR FLOW	[Symbol]	[Symbol]	FIRE DAMPER IN VERTICAL DUCT
[Symbol]	[Symbol]	SPLITTER DAMPER	[Symbol]	[Symbol]	FIRE DAMPER IN HORIZONTAL DUCT
[Symbol]	[Symbol]	DUCT TURN WITH RADIUS ELBOW	[Symbol]	[Symbol]	VOLUME CONTROL DAMPER
[Symbol]	[Symbol]		[Symbol]	[Symbol]	BACKDRAFT DAMPER
[Symbol]	[Symbol]		[Symbol]	[Symbol]	MOTOR OPERATED DAMPER
[Symbol]	[Symbol]		[Symbol]	[Symbol]	THERMOSTAT
[Symbol]	[Symbol]		[Symbol]	[Symbol]	SWITCH
[Symbol]	[Symbol]		[Symbol]	[Symbol]	AUXILIARY THERMOSTAT
[Symbol]	[Symbol]		[Symbol]	[Symbol]	BLANK OFF (SUPPLY DIFFUSER)
[Symbol]	[Symbol]		[Symbol]	[Symbol]	3/4" DOOR UNDERCUT

ABBREVIATIONS
D = DRAIN
OE = OPEN END DUCT
OA = OUTSIDE AIR
RA = RETURN AIR
SA = SUPPLY AIR
CA = COOLING COMPRES. UNIT
AE = AIR EXHAUST
RV = REFRIGERANT VAPOR
RL = REFRIGERANT LIQUID
DN = DOWN
UP = UP
VCD = VENT CONTROL DAMPER
LF = LINE FEET
ERD = EQUIPMENT ROOM DRAIN

DIFFUSERS, REGISTERS AND GRILLES

MARK	NECK	DESCRIPTION
S-1A	8"	SQUARE 3-CONE CEILING DIFFUSER, ADJUSTABLE PATTERN, ALL STEEL CONSTRUCTION, (ALUMINUM CONSTRUCTION FOR WET AREAS) 24x24 MODULE SIZE, FRAME FOR LAY-IN CEILING (PROVIDE PLASTER FRAME FOR GYP. CEILINGS). PROVIDE SECTORIZING BAFFLES TO BLOCK AIRFLOW FOR DIFFUSERS WITHIN 15' OF A THERMOSTAT. TITUS TMS/TMSA OR APPROVED EQUAL.
S-1B	8"	
S-1C	10"	
S-1D	12"	
S-1E	14"	
S-2	6"	SAME AS S-1 EXCEPT 12x12 PANEL SIZE
S-3	AS SHOWN ON PLAN	EXTRUDED ALUMINUM LINEAR SLOT DIFFUSER, 3/4" SLOT, TWO (2) SLOT, CONCEALED MOUNTING, ALIGNMENT PINS FOR MULTIPLE SECTIONS; TITUS ML-38, BORDER2A
S-4	AS SHOWN ON PLAN	SIDEWALL DOUBLE DEFLECTION REGISTER, STEEL CONSTRUCTION, VERTICAL FRONT BLADES w/ REAR DEFLECTION VANES @ 3/4" OC, FLAT FRAME, OFF-WHITE BAKED ENAMEL FINISH; TITUS 300RS/FS w/OBD.
R-1	22x22	RETURN GRILLE - 24x24 PANEL SIZE (24x12 FOR R-1A); 1/2"x1/2"x1/2" ALUM. GRID CORE, FOR T-BAR CEILING (PROVIDE PLASTER FRAME FOR GYP. CEILINGS) TITUS 50F w/FULL SIZE INTERNALLY LINED (1" LINER) SHEETMETAL ADAPTER WHEN DUCTED.
R-3	AS SHOWN ON PLAN	SIDEWALL RETURN AIR GRILLE, 3/4" BLADE SPACING, 35° DEFLECTION, FRONT PARALLEL TO HORIZONTAL DIMENSION, ALUMINUM CONSTRUCTION. TITUS 350FL/FS OR EQUAL.
E-1	AS SHOWN ON PLAN	EGGCRATE EXHAUST GRILLE- STAINLESS STEEL GRID & BORDER, 1/2"x1/2"x1/2" GRID, SURFACE MOUNT WITH HARD CEILING FRAME w/ HIDDEN FASTENING (BORDER TYPE 1); TITUS 50F-SS w/OBD, OR APPROVED EQUAL.



New Cornelia Branch
Southern Bank & Trust
Cornelia, Georgia

DATE	DESCRIPTION
04-02-2019	SCHEMATIC DESIGN DRAWINGS
04-30-2019	DESIGN DEVELOPMENT DRAWINGS

PROJ. NO.: G1902
FILE NAME: .DWG
DRAWN BY: AR

LEGEND, SCHEDULE & DETAILS

SHEET NUMBER:
M1.0

