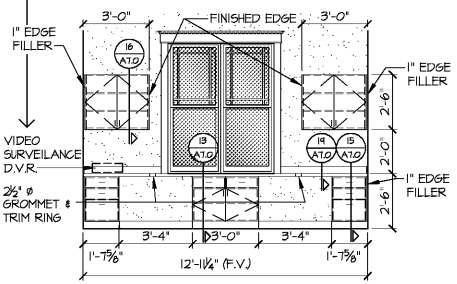
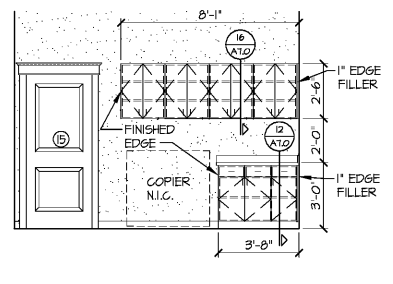


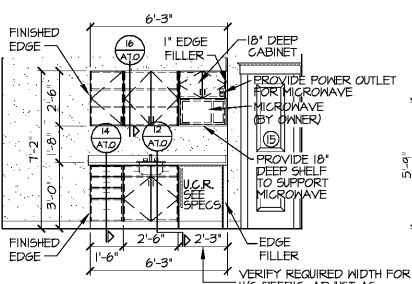
NOTE: G.C. TO COORDINATE POWER AND CONTROL CABLE REQUIREMENTS OF VIDEO SURVEILLANCE SYSTEM CONTRACTOR.



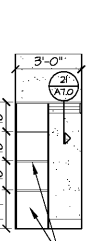
1 WORKROOM/115
A.T.O SCALE: 1/4" = 1'-0"



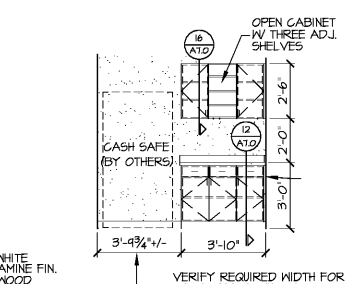
2 WORKROOM/115
A.T.O SCALE: 1/4" = 1'-0"



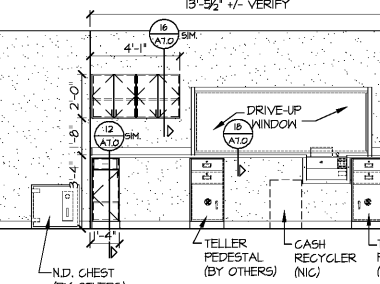
3 BREAKROOM/119
A.T.O SCALE: 1/4" = 1'-0"



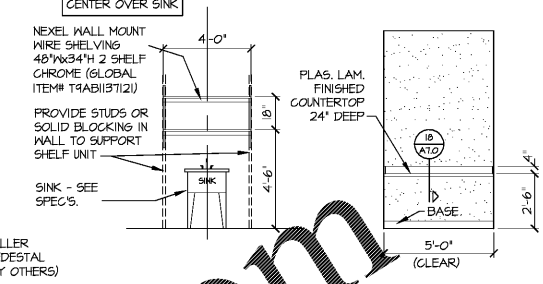
4 CLOSET/111
A.T.O SCALE: 1/4" = 1'-0"



5 CASH ROOM/120
A.T.O SCALE: 1/4" = 1'-0"



6 DRIVE-UP TELLERS/116
A.T.O SCALE: 1/4" = 1'-0"

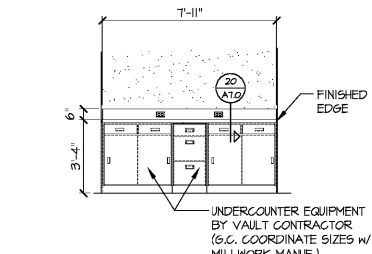


7 MEC/ELEC/12
A.T.O SCALE: 1/4" = 1'-0"

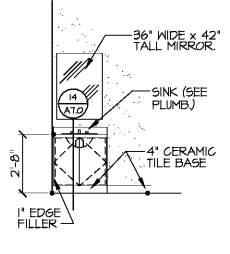
8 C.B./119
A.T.O SCALE: 1/4" = 1'-0"

NOTES:

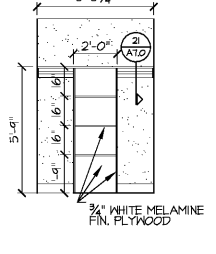
- ALL EXPOSED EXTERIOR SURFACES SHALL BE PLASTIC LAMINATE UNLESS NOTED OTHERWISE
- INTERIOR SURFACES OF DOORS TO BE CABINET LINER OR VERTICAL GRADE PLASTIC LAMINATE. INTERIOR SURFACES TO BE STAINED & SEALED
- MILLWORK MANUFACTURER SHALL PROVIDE ADDITIONAL COUNTER SUPPORTS AS REQUIRED FOR COMPLETE AND STURDY COUNTER INSTALLATION
- WALL CABINETS SHALL BE DESIGNED TO SUPPORT FULL PAPER LOAD. GENERAL CONTRACTOR SHALL PROVIDE FRAMING AND BLOCKING AS NECESSARY IN WALLS FOR ADEQUATE SUPPORT OF ALL CABINETRY, SHELVING & COUNTER TOPS



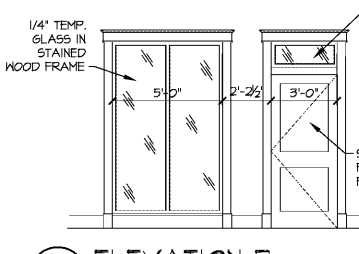
9 TELLERS & DRIVE-UP/116 & 117
A.T.O SCALE: 1/4" = 1'-0"



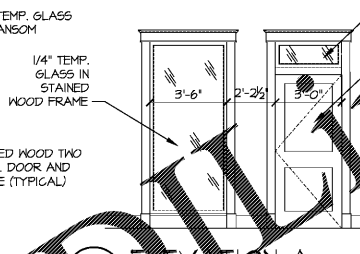
10 TOILET/108
A.T.O SCALE: 1/4" = 1'-0"



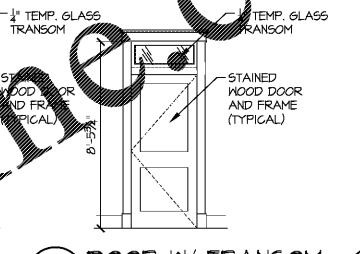
11 CLOSET/109
A.T.O SCALE: 1/4" = 1'-0"



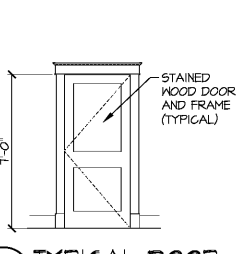
22 ELEVATION B
A.T.O SCALE: 1/4" = 1'-0"



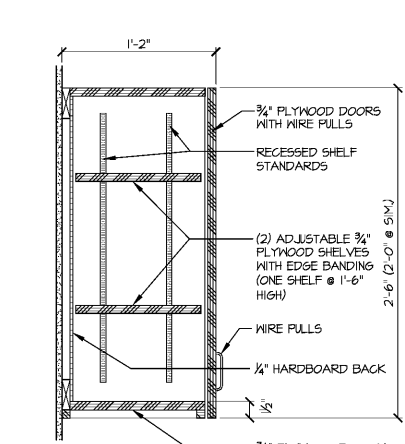
23 ELEVATION A
A.T.O SCALE: 1/4" = 1'-0"



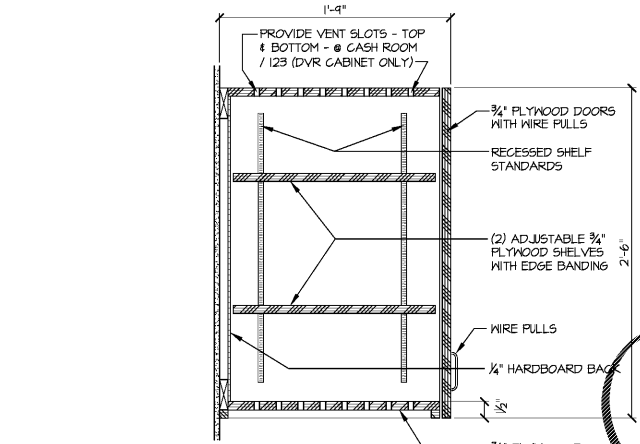
24 DOOR W/ TRANSOM
A.T.O SCALE: 1/4" = 1'-0"



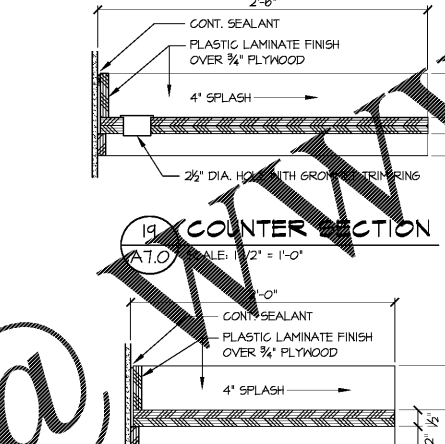
25 TYPICAL DOOR
A.T.O SCALE: 1/4" = 1'-0"



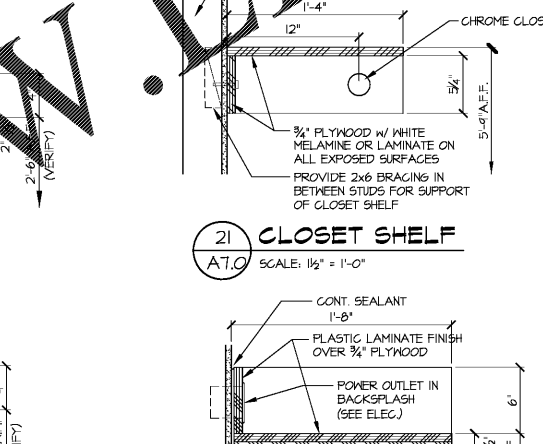
16 TYPICAL UPPER CABINET
A.T.O SCALE: 1/2" = 1'-0"



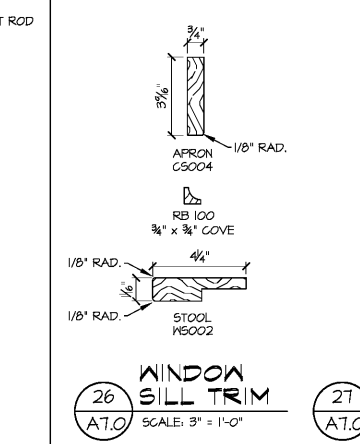
17 TYPICAL UPPER CABINET
A.T.O SCALE: 1/2" = 1'-0"



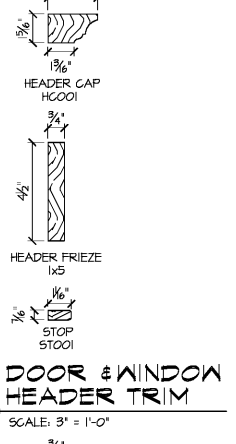
18 COUNTER SECTION
A.T.O SCALE: 1 1/2" = 1'-0"



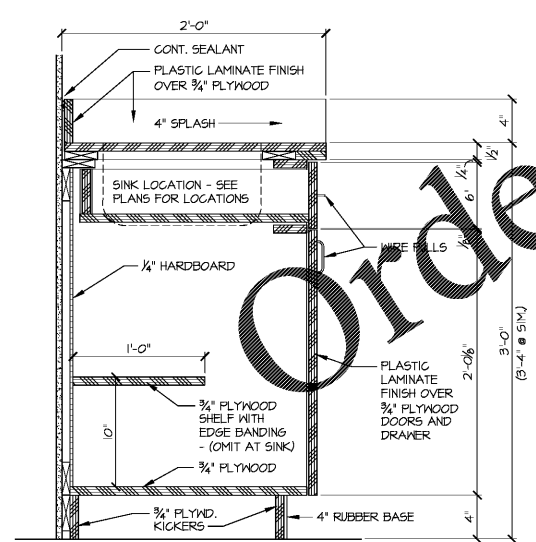
21 CLOSET SHELF
A.T.O SCALE: 1/2" = 1'-0"



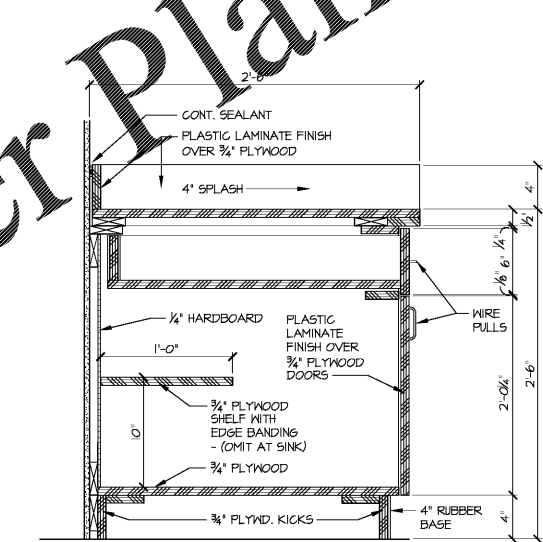
20 COUNTER SECTION
A.T.O SCALE: 1/2" = 1'-0"



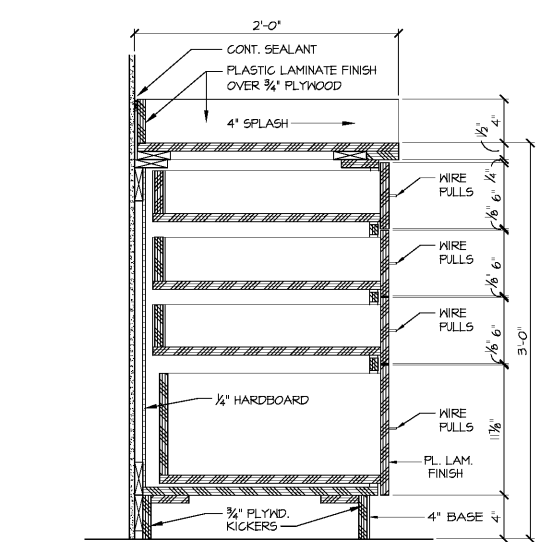
27 DOOR & WINDOW HEADER TRIM
A.T.O SCALE: 3" = 1'-0"



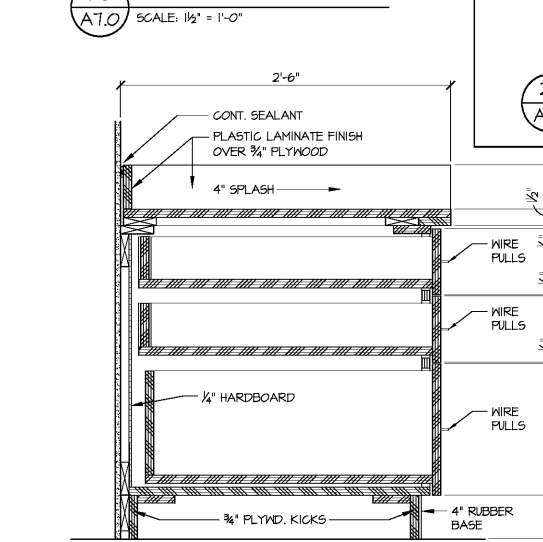
12 TYP. BASE CABINET DETAIL
A.T.O SCALE: 1/2" = 1'-0"



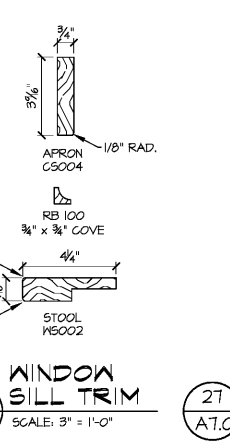
13 BASE CABINET SECTION
A.T.O SCALE: 1 1/2" = 1'-0"



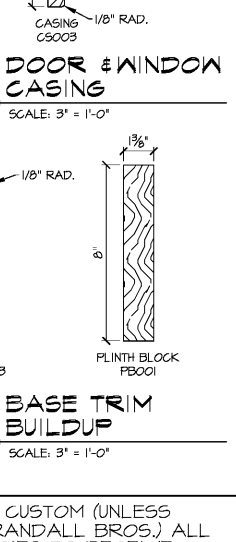
14 SECTION THRU FILE CABINET
A.T.O SCALE: 1/2" = 1'-0"



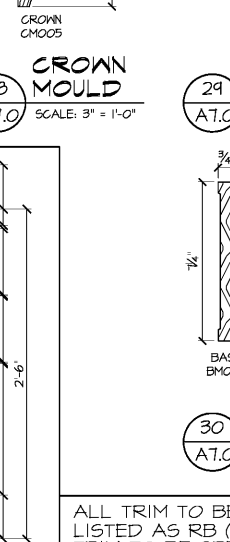
15 SECTION THRU FILE CABINET
A.T.O SCALE: 1/2" = 1'-0"



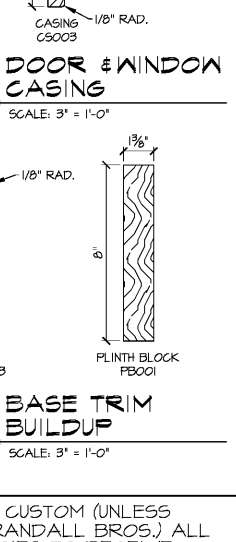
26 WINDOW SILL TRIM
A.T.O SCALE: 3" = 1'-0"



29 DOOR & WINDOW CASING
A.T.O SCALE: 3" = 1'-0"



28 CROWN MOULD
A.T.O SCALE: 3" = 1'-0"



30 BASE TRIM BUILDUP
A.T.O SCALE: 3" = 1'-0"

ALL TRIM TO BE CUSTOM (UNLESS LISTED AS RB (RANDALL BROS.)) ALL TRIM TO BE SPECIES TO RECEIVE DARK TONE CLEAR FINISH SUCH AS SAPELE OR MAHOGANY. CAD FILES OF SHAPES MAY BE PROVIDED FROM ARCHITECT.

DATE	DESCRIPTION
04-08-2019	SCHEMATIC DESIGN DRAWINGS
04-30-2019	DESIGN DEVELOPMENT DRAWINGS
07-23-2019	CONSTRUCTION / BID DRAWINGS