



**HLH**  
 H. LLOYD HILL  
 ARCHITECTS  
 & ASSOCIATES, INC.  
 736 GREEN STREET  
 GAINESVILLE, GA 30501  
 (770) 534-8404



A.I.A.



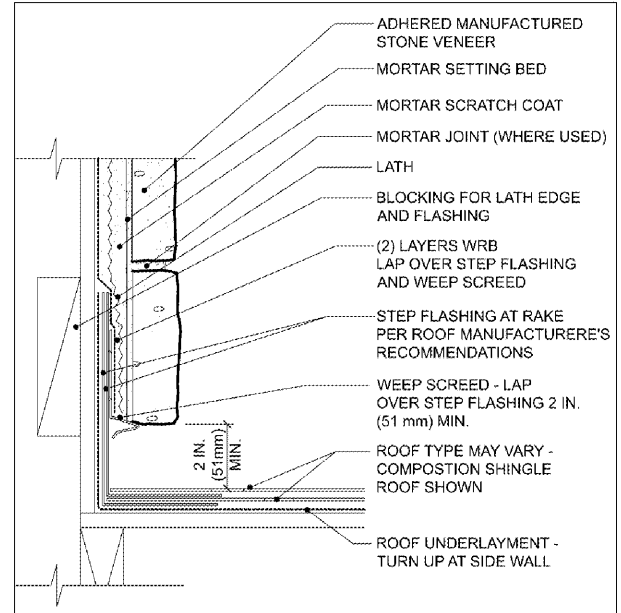
New Cornelia Branch  
 Southern Bank & Trust  
 Cornelia, Georgia  
 COPYRIGHT © 2019 - H. LLOYD HILL ARCHITECTS AND ASSOCIATES, INC.

| DATE       | DESCRIPTION                 |
|------------|-----------------------------|
| 04-09-2019 | SCHEMATIC DESIGN DRAWINGS   |
| 04-30-2019 | DESIGN DEVELOPMENT DRAWINGS |
| 07-23-2019 | CONSTRUCTION / BID DRAWINGS |

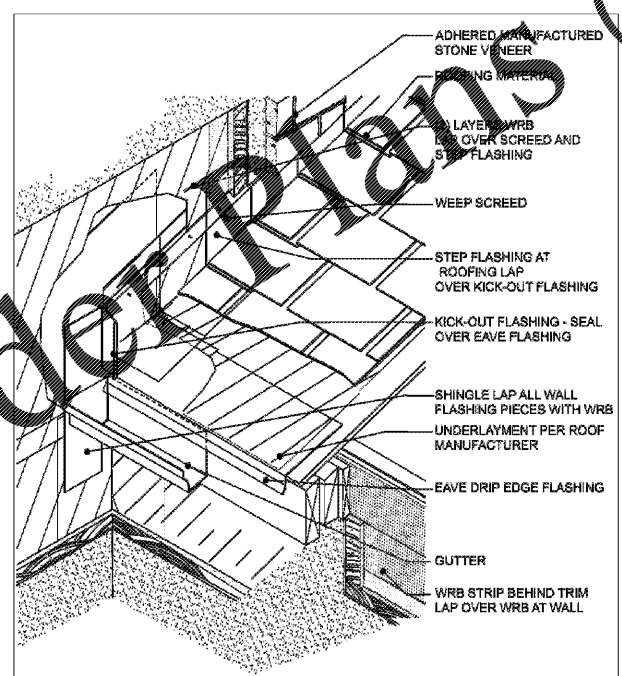
PROJ. NO: G1902  
 FILE NAME: .DWG  
 DRAWN BY: --

SHEET TITLE:  
**ROOF PLAN  
 & STONE  
 DETAILS**

SHEET NUMBER:  
**A2.0**

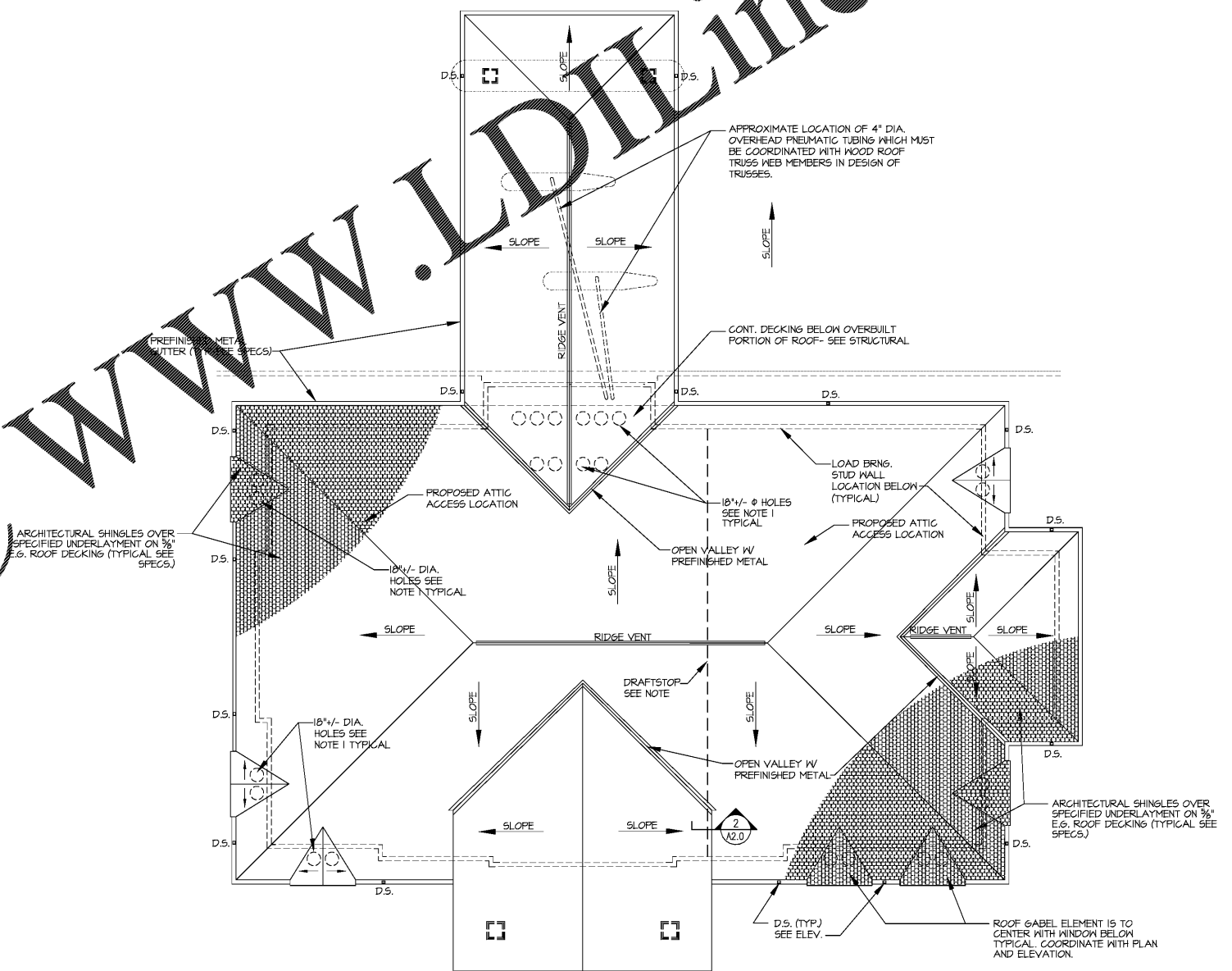


2 ROOF SECTION AT MANUFACTURED STONE  
 SCALE: 1/4" = 1'-0"



3 ROOF ISOMETRIC AT MANUFACTURED STONE  
 SCALE: 1/4" = 1'-0"

WWW.LDITLine.com



1 ROOF PLAN  
 A2.0 SCALE: 1/8" = 1'-0"

NOTE 1:  
 PROVIDE 18" DIAMETER HOLES AS HIGH AND LOW AS POSSIBLE (WITHOUT INTERFERING WITH THE ATTIC INSULATION) IN OVERBUILT PLYWOOD DECK AREAS WHERE SHOWN, FOR ATTIC VENTILATION. HOLES SHALL BE BETWEEN TRUSSES IN BOTH DIRECTIONS. SEE ROOF PLAN FOR CONCEPTUAL LAYOUT.

DRAFTSTOP NOTE:  
 PROVIDE DRAFTSTOP AT "ATTIC" AS REQUIRED BY THE 2012 INTERNATIONAL BUILDING CODE, SO THAT HORIZONTAL AREAS WITHIN ATTIC SPACE DO NOT EXCEED 3,000 SQ.FT. DRAFTSTOP SHALL BE SINGLE LAYER 1/2" GYPSUM BOARD OR 1/2" PLYWOOD DECKING NAILLED DIRECTLY TO SIDE OR END OF TRUSSES AND SHALL EXTEND FROM PLENUM SUB-CEILING (AT BOTTOM OF TRUSSES) TO ROOF DECK. ALL JOINTS AND ADJACENT GAPS SHALL BE 100% SPACKLED OR TAPED TO PROVIDE AN AIR-TIGHT CONDITION. SEAL AROUND ALL PENETRATING DUCTS, PIPING, ETC. TO FORM AN AIR-TIGHT CONDITION. PROVIDE ACCESS TO EACH SEPARATE ATTIC SPACE BY WAY OF LIFT OUT 22" X 36" GYPSUM BOARD PANEL WITH WOOD EDGE SUPPORT, LOCATED AT BOT. OF ROOF TRUSSES. COORDINATE LOCATIONS WITH ARCHITECT.

GENERAL NOTES:  
 PAINT ALL ROOF PENETRATIONS TO MATCH COLOR OF SELECTED ARCHITECTURAL SHINGLE ROOFING - SEE SPEC'S # MECHANICAL PLANS. PAINT TO BE USED SHALL BE WEATHER-RESISTANT, HEAT-RESISTANT & FOR EXTERIOR APPLICATION. ARCHITECT TO APPROVE COLOR & PAINT. COLOR MATCH PRODUCTS FROM SHINGLE MANUFACTURER ARE ACCEPTABLE.