

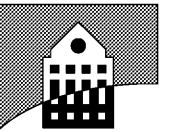


SEAL 07/09/2019

**TRINITY
ENGINEERING
GROUP INC.**

1081 THOMPSON BRIDGE RD
GAINESVILLE, GA 30501
TEL: (770) 535-1044
FAX: (770) 535-0037

CONSULTANT



HLH
H. LLOYD HILL
ARCHITECTS
& ASSOCIATES, INC.

736 GREEN STREET
GAINESVILLE, GA 30501
(770) 534-8404

ARCHITECT

OWNERSHIP OF DOCUMENTS:
DRAWINGS AND SPECIFICATIONS AS
INSTRUMENTS OF SERVICE ARE
EXCLUSIVE PROPERTY OF TRINITY
ENGINEERING GROUP INC.
WHETHER THE PROJECT FOR
WHICH THEY WERE PREPARED IS
EXECUTED & CONSTRUCTED OR
NOT, THESE DOCUMENTS ARE NOT
TO BE REPRODUCED IN ANY FORM
AND ARE NOT TO BE USED BY THE
PROJECT OWNER NOR ANY OTHER
ENTITY ON OTHER PROJECTS OR
FOR ANY EXTENSIONS OR
ADDITIONS OR ALTERATIONS TO
THE ORIGINAL PROJECT EXCEPT BY
WRITTEN AUTHORIZATION &
PERMISSION FROM AND
AGREEMENT WITH TRINITY
ENGINEERING GROUP INC.

LIGHTING PLAN - MAIN FLOOR

NEST FEATHERS
3621 MUNDY MILL ROAD
OAKWOOD, GEORGIA

REVISION / ISSUE

JOB NUMBER
2018-103

DRAWN
--

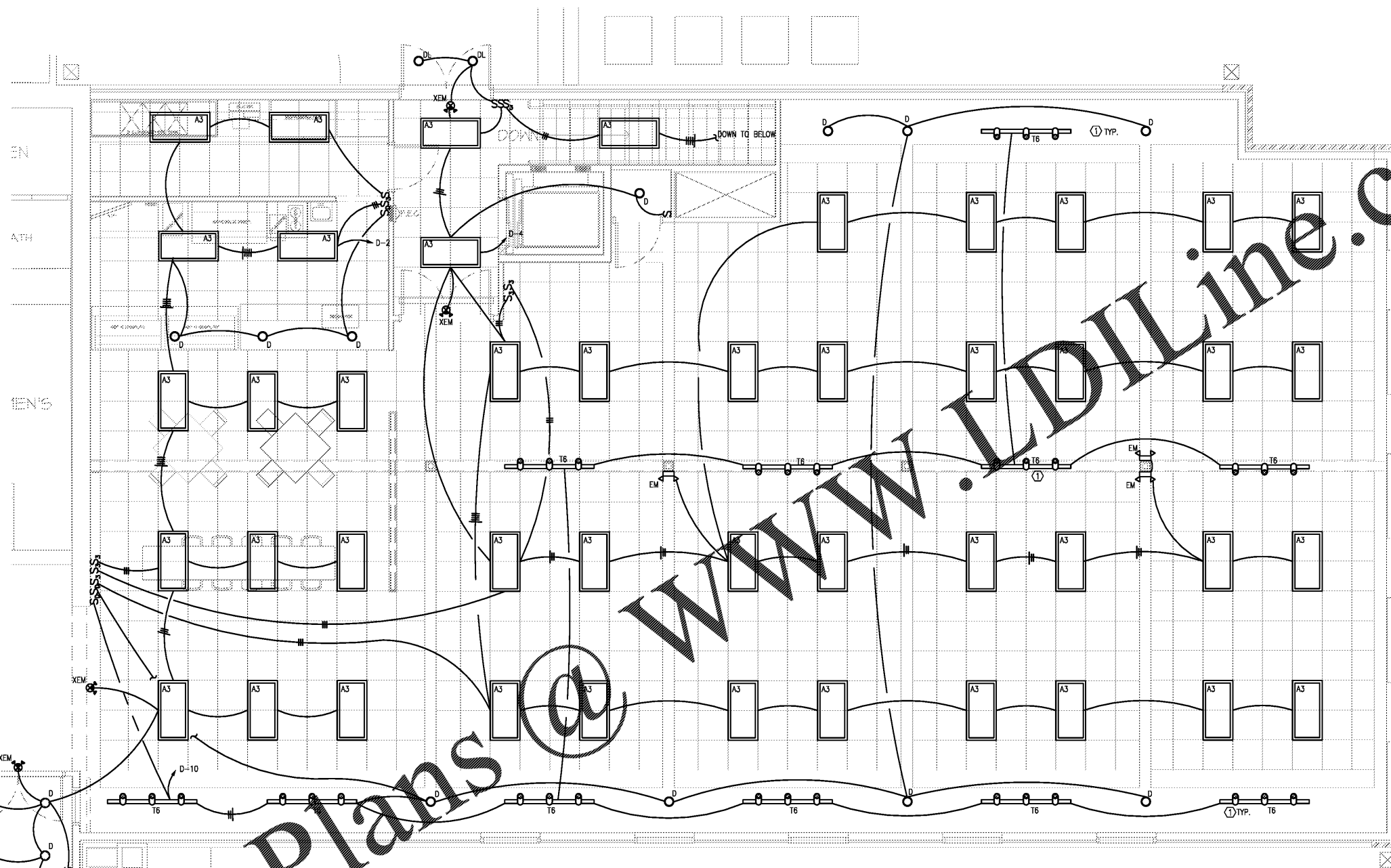
DATE
07/09/2019

SHEET

E-2.1

KEYNOTES: (X)

1. COORDINATE EXACT LIGHT FIXTURE PLACEMENT WITH THE ARCHITECTURAL PLANS.



1 ELECTRICAL LIGHTING PLAN- MAIN FLOOR
SCALE: 1/4" = 1'-0"

| LIGHTING FIXTURE SCHEDULE | | | | | | | |
|---------------------------|--|-------------------------|---------|-------------|-------------------|--|---------|
| TYPE | FIXTURE DESCRIPTION | MOUNTING | VOLTS | INPUT WATTS | LAMPS | MANUFACTURER | REMARKS |
| A3 | 2'X4' TROFFER, VOLUMETRIC HOUSING, EXTRUDED ACRYLIC CURVED SMOOTH DIFFUSER, STATIC HOUSING, 0-10V LED DIMMING DRIVER, 6" PRE-WIRE FIXTURE WHIP, DAMP LOCATION LISTED | RECESS GRID | 120/277 | 45 | 90CRI 4800L 4000K | LITHONIA #ZBLT4-48L-ADSM-MVOLT-EZ1-LP940 | |
| C8 | 6" LED STRIP, WHITE STEEL CHANNEL HOUSING, LED DRIVER, DAMP LOCATION LISTED | SURFACE CEILING | 120 | 125 | 10,000L 4000K | LITHONIA #ZLN-L96-10000LM-FST-MVOLT-4000K-80CRI-WH | |
| D | 6" DIA. DOWNLIGHT, 0-10V LED DIMMING, 50,000 HR OPERATION, SEMI SPECULAR DIFFUSER, DAMP LOCATION LISTED. NON-IC RATED HOUSING, WHITE PAINTED FLANGE. | RECESS CEILING | 120 | 10.5 | 90CRI 1500L 4000K | LITHONIA #LDN6-40K-15L-L06WR-LSS-MVOLT-EZ10-TRW | |
| SC | ARCHITECTURAL LED WALL SCONCE, TYPE 3 LIGHT DISTRIBUTION, FINISH BY ARCHITECT, 2 DRIVER ENGINES, WET LOCATION LISTED. | SURFACE WALL | 120 | 47 | 4028L 4000K | LITHONIA #MRWLED-2-4000K-SR3-MVOLT-UT5-PE | |
| T6 | 6" TRACK, (4) LAMP HEADS, WHITE FINISH, PAR30 LAMP HOLDER, FINISH PER ARCHITECT. | SURFACE/PENDANT CEILING | 120 | 15W | 15W LED PAR30 | LITHONIA #LT6-WH HEAD: #LTC-PRSD-PAR30 | |
| EM | EMERGENCY EGRESS LIGHT, 90-MIN. BATTERY BACK-UP, (2) ADJUSTABLE LED HEADS, WHITE THERMOPLASTIC HOUSING, SELF-DIAGNOSTICS | SURFACE WALL | 120 | 15 | WITH UNIT | LITHONIA #ELM1T-W-LP06VS-LTP-SD | |
| XEM | COMBINATION EXIT/EMERGENCY EGRESS LIGHT, SINGLE FACED, (2) ADJUSTABLE LED HEADS, 90-MIN BATTERY BACK-UP, SELF-DIAGNOSTICS, WHITE THERMOPLASTIC HOUSING, RED LETTERING, DIRECTIONAL CHEVRONS AS INDICATED ON PLANS. | SURFACE WALL/CEILING | 120/277 | 5 | WITH UNIT | LITHONIA #LHQM-LED-R-SD | |

NOTES:
1. SPECIFIED LIGHT FIXTURES SHALL BE USED AS A BASIS OF DESIGN. OWNER SHALL APPROVE EXACT LIGHTING FIXTURE PACKAGE PRIOR TO BID SUBMITTAL.

Order Plans @ www.ediLine.com

FILE NAME: E2.1.dwg

PLOT DATE: Jul 09, 2019 DIRECTORY: F:\2018-103 Nest Feathers\ELEC