

**ELECTRICAL SYMBOL LEGEND:**

- HOMERUN CIRCUIT TO PANEL AS INDICATED. HATCH MARKS INDICATE QUANTITY OF CONDUCTORS WITHIN RACEWAY. NO HATCH MARKS INDICATE QUANTITY OF CONDUCTORS UNLESS OTHERWISE NOTED. EQUIPMENT GROUNDING CONDUCTORS ARE NOT INDICATED; HOWEVER, CONTRACTOR SHALL PROVIDE EACH RACEWAY WITH A GREEN EQUIPMENT GROUNDING CONDUCTOR SIZED IN ACCORDANCE WITH THE N.E.C. (TABLE 250.122), UNLESS OTHERWISE INDICATED.
- WIRING IN CONDUIT/RACEWAY INSTALLED CONCEALED IN FINISHED SPACES, EXPOSED IN UNFINISHED SPACES.
- WIRING IN CONDUIT/RACEWAY INSTALLED CONCEALED IN SLAB OR BELOW GRADE. INSTALLATION DEPTH AS NOTED.
- JUNCTION BOX INSTALLED FLUSH OR ABOVE CEILING.
- FLUORESCENT TROFFER FIXTURE, REFER TO LIGHTING FIXTURE SCHEDULE FOR ADDITIONAL REQUIREMENTS.
  - \* "NL" - INDICATES FIXTURE TO BE CONNECTED TO AN UNSWITCHED PHASE CONDUCTOR OR AHEAD OF SWITCH WITHIN CIRCUIT.
  - \* "EM" - INDICATES FIXTURE TO BE PROVIDED WITH A 90 MIN. EMERGENCY EGRESS BATTERY BACK-UP UNIT. REFER TO FIXTURE SCHEDULE FOR REQUIRED LUMEN OUTPUT OF LAMP(S) CONNECTED TO BATTERY BACK-UP.
- FLUORESCENT TROFFER FIXTURE, 90 MIN. EMERGENCY EGRESS BATTERY BACK-UP, REFER TO LIGHTING FIXTURE SCHEDULE FOR ADDITIONAL REQUIREMENTS.
  - \* "NL" - INDICATES FIXTURE TO BE CONNECTED TO AN UNSWITCHED PHASE CONDUCTOR OR AHEAD OF SWITCH WITHIN CIRCUIT.
  - \* "EM" - INDICATES FIXTURE TO BE PROVIDED WITH A 90 MIN. EMERGENCY EGRESS BATTERY BACK-UP UNIT. REFER TO FIXTURE SCHEDULE FOR REQUIRED LUMEN OUTPUT OF LAMP(S) CONNECTED TO BATTERY BACK-UP.
- FLUORESCENT STRIP FIXTURE, REFER TO LIGHTING FIXTURE SCHEDULE FOR ADDITIONAL REQUIREMENTS.
  - \* "NL" - INDICATES FIXTURE TO BE CONNECTED TO AN UNSWITCHED PHASE CONDUCTOR OR AHEAD OF SWITCH WITHIN CIRCUIT.
  - \* "EM" - INDICATES FIXTURE TO BE PROVIDED WITH A 90 MIN. EMERGENCY EGRESS BATTERY BACK-UP UNIT. REFER TO FIXTURE SCHEDULE FOR REQUIRED LUMEN OUTPUT OF LAMP(S) CONNECTED TO BATTERY BACK-UP.
- INCANDESCENT/H.L.D./FLUORESCENT/LED DOWNLIGHT FIXTURE, REFER TO LIGHTING FIXTURE SCHEDULE FOR ADDITIONAL REQUIREMENTS.
  - \* "NL" - INDICATES FIXTURE TO BE CONNECTED TO AN UNSWITCHED PHASE CONDUCTOR OR AHEAD OF SWITCH WITHIN CIRCUIT.
  - \* "EM" - INDICATES FIXTURE TO BE PROVIDED WITH A 90 MIN. EMERGENCY EGRESS BATTERY BACK-UP UNIT. REFER TO FIXTURE SCHEDULE FOR REQUIRED LUMEN OUTPUT OF LAMP(S) CONNECTED TO BATTERY BACK-UP.
- INCANDESCENT/H.L.D./FLUORESCENT WALL MOUNTED FIXTURE, REFER TO LIGHTING FIXTURE SCHEDULE FOR ADDITIONAL REQUIREMENTS. COORDINATE MOUNTING HEIGHT WITH BUILDING ELEVATIONS AND PLANS AS NOTED.
- EXIT FIXTURE WITH 90 MINUTE EMERGENCY BATTERY BACK-UP. SHADED QUADRANT INDICATES TEXT SIDE, ARROW INDICATES DIRECTION OF EGRESS. FIELD VERIFY EGRESS DIRECTION PRIOR TO ORDERING OF DIRECTIONAL SIGNAGE.
- EMERGENCY EGRESS FIXTURE WITH 90 MINUTE EMERGENCY BATTERY BACK-UP.
- SINGLE POLE TOGGLE SWITCH, MOUNTED AT 4'-0" A.F.F., HUBBELL #HBL1221.
- THREE-WAY TOGGLE SWITCH, MOUNTED AT 4'-0" A.F.F., HUBBELL #HBL1223.
- FOUR-WAY TOGGLE SWITCH, MOUNTED AT 4'-0" A.F.F., HUBBELL #HBL1224.
- DIMMER SWITCH, MOUNTED AT 4'-0" A.F.F. (INCANDESCENT LIGHTS- LUTRON #NT-1500, 1500VA CAPACITY, DOUBLE-GANG WALL BOX) (FLUORESCENT LIGHTS- LUTRON #NT-10, 1920VA CAPACITY, SINGLE-GANG WALL BOX) (LED LIGHTS-
- DOUBLE POLE (MOTOR-RATED) MANUAL STARTER WITH OVERLOAD, 208V, 30A UNLESS NOTED OTHERWISE.
- WALL MOUNTED OCCUPANCY SENSOR, SWITCH SHALL BE RATED FOR CONNECTED LOAD, 120/277V, ADJUSTABLE TIME DELAY: 5 MIN. TO 30 MIN. WATTSTOPPER #DSW-100 (SINGLE) #DW-103 (MULTIWAY)
- CEILING MOUNTED OCCUPANCY SENSOR, ULTRASONIC DETECTION, RELAY SHALL BE RATED FOR CONNECTED LOAD, 120/277V, ADJUSTABLE TIME DELAY: 15 SEC. TO 30 MIN. WATTSTOPPER #WT-1100 (1100 SQ FT AREA) #WT-2250 (90 FT CORRIDOR). WATTSTOPPER #BZ-50 POWER PACK.
- DUPLEX RECEPTACLE, 20A, 120V, MOUNTED AT 18" A.F.F., HUBBELL #5362.
  - \* "IG" - ISOLATED GROUND, HUBBELL #IG5362.
  - \* "GF" - GROUND FAULT CIRCUIT INTERRUPTER, HUBBELL #GF-5362
  - \* "WP" - DEVICE PROVIDED WITH A WEATHER-PROOF DEVICE COVERPLATE
- TWO (2) DUPLEX RECEPTACLES UNDER COMMON PLATE, 18" A.F.F., OR ABOVE COUNTER WHERE SHOWN, HUBBELL #5362.
- SPECIAL RECEPTACLE. REFER TO PLANS FOR VOLTAGE, AMPERAGE AND CONFIGURATION TYPE.
- FLUSH FLOOR DUPLEX RECEPTACLE AND COVERPLATE, 20A, 120V, HUBBELL #5362. COORDINATE COVERPLATE TYPE AND FLOOR FINISH WITH ARCHITECTURAL PRIOR TO ROUGH-IN OF BACKBOX
- COMBINATION TELEPHONE/DATA OUTLET BOX, 4" SQUARE BOX W/ PLASTER RING, 18" A.F.F., OR ABOVE COUNTER WHERE SHOWN, WITH 3/4" (AND #14AWG PULLWIRE) STUBBED 6" ABOVE ACCESSIBLE CEILING OR BACK TO TELEPHONE BACKBOARD AS DIRECTED BY THE OWNER.
- CABLE TV OUTLET BOX, 4" SQUARE BOX W/ PLASTER RING, 18" A.F.F. (UON), WITH 3/4" STUBBED ABOVE ACCESSIBLE CEILING OR BACK TO TELEPHONE BACKBOARD AS DIRECTED BY OWNER.
- MOTOR, RATINGS (HP, VOLTAGE, PHASE, AMPERAGE) SIZE AS NOTED ON PLANS.
- DISCONNECT SWITCH, AMPACITY/POLES/FUSING AS NOTED. NEMA 1 ENCLOSURE UNLESS OTHERWISE NOTED.
- PANELBOARD, SEE SCHEDULE AND RISER DIAGRAM FOR VOLTAGE, PHASE, AND AMPACITY.
- TELEPHONE/AUXILIARY SYSTEMS BACKBOARD, PROVIDE 4'X8' MIN. PLYWOOD BACKBOARD PAINTED WITH GRAY FIRE RETARDANT PAINT. SECURE TO BUILDING STRUCTURE WITH ANCHOR BOLTS. PROVIDE A 12 SPACE GROUND BUS BAR WITH (1)#6G-3/4" PVC FROM BUS BAR BACK TO ELECTRICAL SERVICE GROUND.
- WEATHERPROOF GASKETED ENCLOSURE AND COVER.
- ABOVE FINISHED FLOOR.
- INDICATES FIXTURE TO BE CONNECTED TO AN UNSWITCHED PHASE CONDUCTOR OR AHEAD OF SWITCH WITHIN CIRCUIT.
- SMOKE DETECTOR

ELECTRICAL-MECHANICAL EQUIPMENT SCHEDULE											
DEVICE	VOLTAGE	HP	HEAT KW	FLA	MCA	MOC	CKT. #	LOAD (KVA)	FEEDERS	DISCONNECT	NOTES
FCU-1	208/1	1/4	7.5	36.1	45	50	SEE PANEL SCHEDULE	7.9	2#6, 1#10G. -1°C.	60/2/F50A	
FCU-2	208/1	1/4	7.5	36.1	45	50		7.9	2#6, 1#10G. -1°C.	60/2/F50A	
FCU-3	208/1	1/3	10.0	50.4	65	70		10.5	2#4, 1#8G. -1°C.	100/2/F70A	
FCU-4	208/1	1/3	10.0	50.4	65	70		10.5	2#4, 1#8G. -1°C.	100/2/F70A	
FCU-5	208/1	1/3	10.0	50.4	65	70		10.5	2#4, 1#8G. -1°C.	100/2/F70A	
HP-1	208/1		15.2	18.7	30			3.2	2#10, 1#10G. -1/2°C.	30/2/F30A/WP	2 1/2 TON
HP-2	208/1		15.2	18.7	30			3.2	2#10, 1#10G. -1/2°C.	30/2/F30A/WP	2 1/2 TON
HP-3	208/1		19.3	23.8	35			4.0	2#10, 1#10G. -1/2°C.	60/2/F35A/WP	3 TON
HP-4	208/1		19.3	23.8	35			4.0	2#10, 1#10G. -1/2°C.	60/2/F35A/WP	3 TON
HP-5	208/1		19.3	23.8	35			4.0	2#10, 1#10G. -1/2°C.	60/2/F35A/WP	3 TON
CEILING MTD HTR	208/1		14.4	18	20			3.0	2#12, 1#12G. -1/2°C.	30/2/F20A/WP	

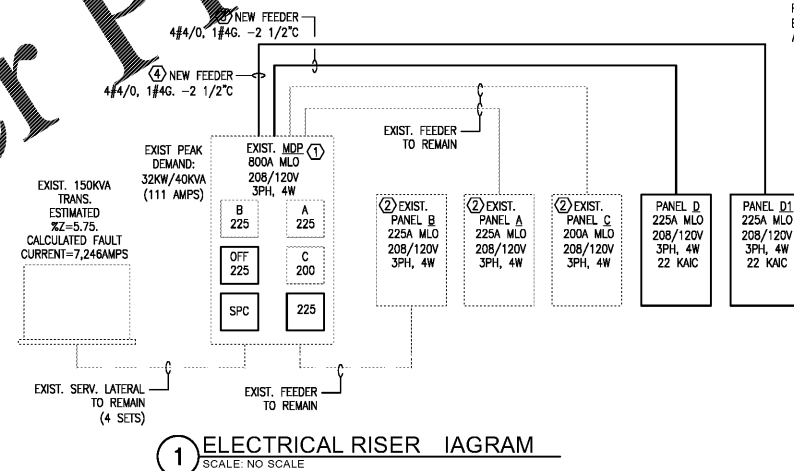
NOTES:  
1. COORDINATE EXACT ELECTRICAL REQUIREMENTS WITH THE MECHANICAL SUB-CONTRACTOR PRIOR TO ROUGH-IN

KITCHEN EQUIPMENT - ELECTRICAL CONNECTION SCHEDULE																	
ITEM	QTY	DESCRIPTION	MODEL	BY	VOLTS	PHASE	AMPS	KW	HP	DIRECT PLUG	NEMA	CKT. LOAD	MCA	MOC	FEEDER	ELECTRICAL REMARKS	ITEM
1	1	SINGLE DOOR REFRIGERATOR	TURBO #MSR47-2-N	OWNER	115	1	2.8	X	X	X	5-15P	0.3	3.5	15	2#12, 1#12G. -1/2°C.	30/1/F15A	
2	1	3 COMPARTMENT SINK															
3	2	DUEL CASE	FEDERAL #	OWNER	120	1	9	X	X	X	5-15P	11.3	15	2#12, 1#12G. -1/2°C.	30/1/F15A		
4	1	SANDWICH PREP UNIT	TURBO AIR #MST-60-24-N	OWNER	115	1	4.4	X	X	X	5-15P	0.3	12.5	15	2#12, 1#12G. -1/2°C.	30/1/F15A	
5	1	COOKER/WARMER	WYATT #	OWNER	120	1	10	X	X	X	5-15P	1.2	12.5	15	2#12, 1#12G. -1/2°C.	30/1/F15A	
6	1	OVER RANGE WALL MOUNTED SHELF	GERMAN KNIFE #GS-12LD	OWNER	115	1	9.8	X	X	X	X	12.3	15	2#12, 1#12G. -1/2°C.	30/1/F15A		
7	1	TURBO CHEF	MODEL #11-9500-400	OWNER	208	1	30	X	X	X	30P	6.2	37.5	30	2#10, 1#10G. -1/2°C.	30/1/F30A	
8	1	CONVEYER TOASTER	STAR #QCS1	OWNER	120	1	20	X	X	X	15P	1.7	17.3	15	2#12, 1#12G. -1/2°C.	30/1/F15A	

NOTES:  
1. ELECTRICAL SUB-CONTRACTOR SHALL BE RESPONSIBLE FOR FIELD VERIFICATION OF ALL ELECTRICAL CONNECTION REQUIREMENTS PRIOR TO ORDERING OF THE ELECTRICAL DISTRIBUTION. EQUIPMENT REQUIRING BUCK-BOOST/AUTOTRANSFORMERS SHALL BE PROVIDED BY THE ELECTRICAL SUB-CONTRACTOR AND SHALL COORDINATE WITH THE OWNER PRIOR TO ROUGH-IN. ELECTRICAL SUB-CONTRACTOR SHALL PROVIDE PRICING TO THE OWNER FOR REQUIRED TRANSFORMER ACCESSORIES DURING SUBMITTAL OF THE BID.  
2. ELECTRICAL SUB-CONTRACTOR SHALL CONFIRM MOUNTING HEIGHT OF ALL ELECTRICAL BACKBOXES DURING ROUGH-IN STAGE WITH THE ARCHITECTURAL AND MILLWORK DRAWINGS. OUTLETS MOUNTED FOR EQUIPMENT SHALL BE COORDINATED WITH MOUNTING CONFIGURATION OF EQUIPMENT AND LOCATION OF MILLWORK CROMMETS AS APPLICABLE.

**KEYNOTES:**

1. EXISTING MAIN ELECTRICAL DISTRIBUTION PANEL. PROVIDE NEW BREAKERS COMPATIBLE WITH MANUFACTURERS SERIES AND EXCEEDING AVAILABLE FAULT CURRENT. COORDINATE WITH LOCAL POWER COMPANY FOR EXISTING AVAILABLE FAULT CURRENT PRIOR TO ORDERING NEW BREAKERS.
2. EXISTING ELECTRICAL DISTRIBUTION PANEL TO REMAIN; PANEL SHOWN FOR REFERENCE PURPOSES ONLY.
3. CONNECT NEW FEEDER TO THE EXISTING SPARE CIRCUIT BREAKER WITHIN THE MAIN DISTRIBUTION. PROVIDE NEW LABELING ADJACENT TO THE BREAKER.
4. PROVIDE A NEW 225/3 CIRCUIT BREAKER WITHIN THE MAIN ELECTRICAL DISTRIBUTION PANEL FOR NEW ELECTRICAL FEEDER. PROVIDE REQUIRED INTERIOR PANEL BUSSING/ACCESSORIES TO INSTALL THE NEW BREAKER. PROVIDE NEW LABELING ADJACENT TO THE BREAKER.



PANEL SCHEDULE "D"											
AMPS TRIP	POLES	DESCRIPTION	CKT. #	PHASE LOAD (K.V.A.)			CKT. #	DESCRIPTION	POLES	AMPS TRIP	
				#A	#B	#C					
20	1	RECEPT.- KITCHEN	1	0.8	0.8		2	LIGHTS- KITCHEN/FOYER	1	20	
20	1	RECEPT.- SHOWROOM	3		0.8	1.4	4	LIGHTS- SHOWROOM	1	20	
20	1	RECEPT.- SHOWROOM	5			0.8 / 1.4	6	LIGHTS- STORE ROOM/OFFICE	1	20	
20	1	RECEPT.- SHOWROOM	7	0.8	1.2		8	LIGHTS- STORE ROOM	1	20	
20	1	RECEPT.- SHOWROOM	9		1.4	0.5	10	LIGHTS- SHOWROOM	1	20	
20	1	RECEPT.- OFFICE	11			1.8	12	SPARE	1	20	
20	1	RECEPT.- STORE ROOM	13	1.6	0.4		14	ELEV.	1	20	
20	1	RECEPT.- STORE ROOM	15		1.4	0.5	16	ELEV. CAB LIFT	1	20	
20	1	RECEPT.- STORE ROOM	17			1.8 / 2.0	18	ELEVATOR CONTROLLER	1	30	
20	1	RECEPT.- OFFICE/RESTROOM	19	1.8	2.0		20		2		
20	1	SPARE	21				22	SHUNT TRIP	1		
30	2	HP-1	23			1.6 / 4.0	24	FCU-1	2	50	
30	2	HP-2	25	1.6	4.0		26		2		
30	2	HP-3	27			1.6 / 4.0	28	FCU-2	2	50	
35	2	SPACE	29		2.0		30		1		
1	1	SPACE	31				32	SPACE	1		
1	1	SPACE	33				34	SPACE	1		
1	1	SPACE	35				36	SPACE	1		
1	1	SPACE	37				38	SPACE	1		
1	1	SPACE	39				40	SPACE	1		
1	1	SPACE	41				42	SPACE	1		
TOTALS				17.0	13.6	19.0					

NOTES:  
1. PROVIDE FEED-THRU LUGS

CONNECTED LOAD: 49.8KVA (137.8 AMPS)  
DEMAND LOAD: 49.8KVA (137.8 AMPS)

PANEL SCHEDULE "D1"											
AMPS TRIP	POLES	DESCRIPTION	CKT. #	PHASE LOAD (K.V.A.)			CKT. #	DESCRIPTION	POLES	AMPS TRIP	
				#A	#B	#C					
20	1	DUAL CASE (3)	43	1.1	1.5		44	CEILING MOUNTED HEATER	2	20	
20	1	RECEPT.	45		0.8	1.5	46		1	20	
20	1	RECEPT.	47			0.8 / 0.4	48	RECEPT.-REGISTER	1	20	
20	1	RECEPT.	49	0.8	-		50	SPARE	1	20	
20	1	RECEPT.-TELE BKBD	51		0.2	-	52	SPARE	1	20	
20	1	SPARE	53			- / -	54	SPARE	1	20	
20	1	RECEPT.- KITCHEN (6)	55	0.2	-		56	SPARE	1	20	
20	1	RECEPT.- KITCHEN (1)	57		0.2	-	58	SPARE	1	20	
20	1	RECEPT.- KITCHEN	59			0.2 / -	60	SPARE	1	20	
20	1	DUAL CASE (3)	61	1.1	-		62	SPACE	1		
20	1	SANDWICH PREP (4)	63		0.5	-	64	SPACE	1		
20	1	WARMER (5)	65			1.2 / -	66	SPACE	1		
30	2	TURBO CHEF (7)	67	3.1	-		68	SPACE	1		
20	1	TOASTER (8)	69		3.1	-	70	SPACE	1		
20	1	SPACE	71			1.7 / -	72	SPACE	1		
1	1	SPACE	73	-	5.3		74	FCU-3	2	70	
1	1	SPACE	75		-	5.3	76		2		
35	2	HP-4	77			2.0 / 5.3	78	FCU-4	2	70	
35	2	HP-5	79	2.0	5.3		80		2		
35	2	HP-5	81		2.0	5.3	82	FCU-5	2	70	
35	2	HP-5	83			2.0 / 5.3	84		2		
TOTAL				20.4	18.9	18.9					

NOTES:  
1. CONNECTED LOAD: 58.2KVA (161.6 AMPS)  
DEMAND LOAD: 58.2KVA (161.6 AMPS)



**TRINITY ENGINEERING GROUP INC.**  
1081 THOMPSON BRIDGE RD  
GAINESVILLE, GA 30501  
TEL: (770) 535-1044  
FAX: (770) 535-0037  
CONSULTANT

**HLH H. LLOYD HILL ARCHITECTS & ASSOCIATES, INC.**  
736 GREEN STREET  
GAINESVILLE, GA 30501  
(770) 534-8404  
ARCHITECT

OWNERSHIP OF DOCUMENTS: DRAWINGS AND SPECIFICATIONS ARE INSTRUMENTS OF SERVICE ARE EXCLUSIVE PROPERTY OF TRINITY ENGINEERING GROUP INC. WHETHER THE PROJECT FOR WHICH THEY WERE PREPARED IS EXECUTED & CONSTRUCTED OR NOT, THESE DOCUMENTS ARE NOT TO BE REPRODUCED IN ANY FORM AND ARE NOT TO BE USED BY THE PROJECT OWNER NOR ANY OTHER ENTITY ON OTHER PROJECTS OR FOR ANY EXTENSIONS OR ADDITIONS OR ALTERATIONS TO THE ORIGINAL PROJECT EXCEPT BY WRITTEN AUTHORIZATION & PERMISSION FROM AN AGREEMENT WITH TRINITY ENGINEERING GROUP INC.

NEST FEATHERS  
3621 MUNDY MILL ROAD  
OAKWOOD, GEORGIA

**LIGHTING DETAILS AND SCHEDULES**

REVISION / ISSUE	
JOB NUMBER	2018-103
DRAWN	--
DATE	07/09/2019