

REL.	TAG	PACKAGE #	LOCATION	SWITCHES		OPTION	FANS CONTROLLED				
				LOCATION	QUANTITY		TYPE	HP.	VOLT	FLA	
1		SC-32110FP-SEP	Wall Utility Cabinet Left	08 - Ship Loose w/ Prewire	1 Light	Smart Controls Thermostatic Control	Exhaust	3	2,000	208	5.9
					1 Fan		Exhaust	3	2,000	208	5.9
							Supply	3	3,000	208	8.7

JOB NO
3831774

MODEL NUMBER SC-32110FP-SEP
JOB NAME Panda Express - Marietta GA C...

DRAWN BY
DATE 5/15/2019

SCHEMATIC TYPE INSTALL
DWG NO ECP #1-1

DESCRIPTION OF OPERATION:
3 Phase w/ control for 2 Exhaust Fans, 1 Supply Fan, Exhaust on in Fire, Lights out in Fire, Fan(s) On/Off Thermostatically Controlled. Separate Breaker Input for each Fan, Room temperature sensor shipped loose for field installation. INVERTER DUTY 3 PHASE MOTOR REQUIRED FOR USE WITH VFD.

REVISIONS	
DESCRIPTION	DATE



PANDA RESTAURANT GROUP INC.
1683 Walnut Grove Ave.
Rosemead, California
91770
Telephone: 626.799.9898
Facsimile: 626.372.8288

All ideas, designs, arrangement and plans indicated or represented by this drawing are the property of Panda Express Inc. and were created for use on this specific project. None of these ideas, designs, arrangements or plans may be used by or disclosed to any person, firm, or corporation without the written permission of Panda Express Inc.

REVISIONS:	
NO.	DESCRIPTION
1	05.29.19 ISSUE FOR PERMIT
2	08.05.13 ISSUE FOR BID

ISSUE DATE:
DRAWN BY:
PANDA PROJECT # - S4-20-D7060
C&P PROJECT # - 2190238



1925 Prospect Ave. Orlando, FL 32814
P (407) 661-9100
F (407) 661-9101
www.c&p.com
Panda Express Certificate # 00828

08.05.2019

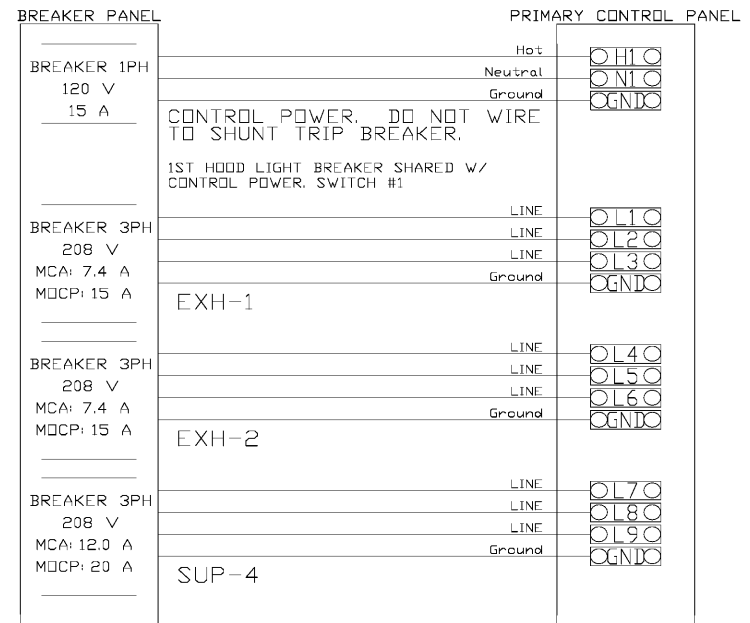
CAPTIVEAIRE
 Southern California Office
 3002 Dow Ave., Suite #10, Tustin, CA 92780 PHONE: (714) 957-1500 FAX: (919) 227-5975 EMAIL: reg86@captiveaire.com

Panda Express - Marietta GA (SA-20-D7060)
 3460 SANDY PINES RD, NE SUITE 210
 MARIETTA, GA, 30066

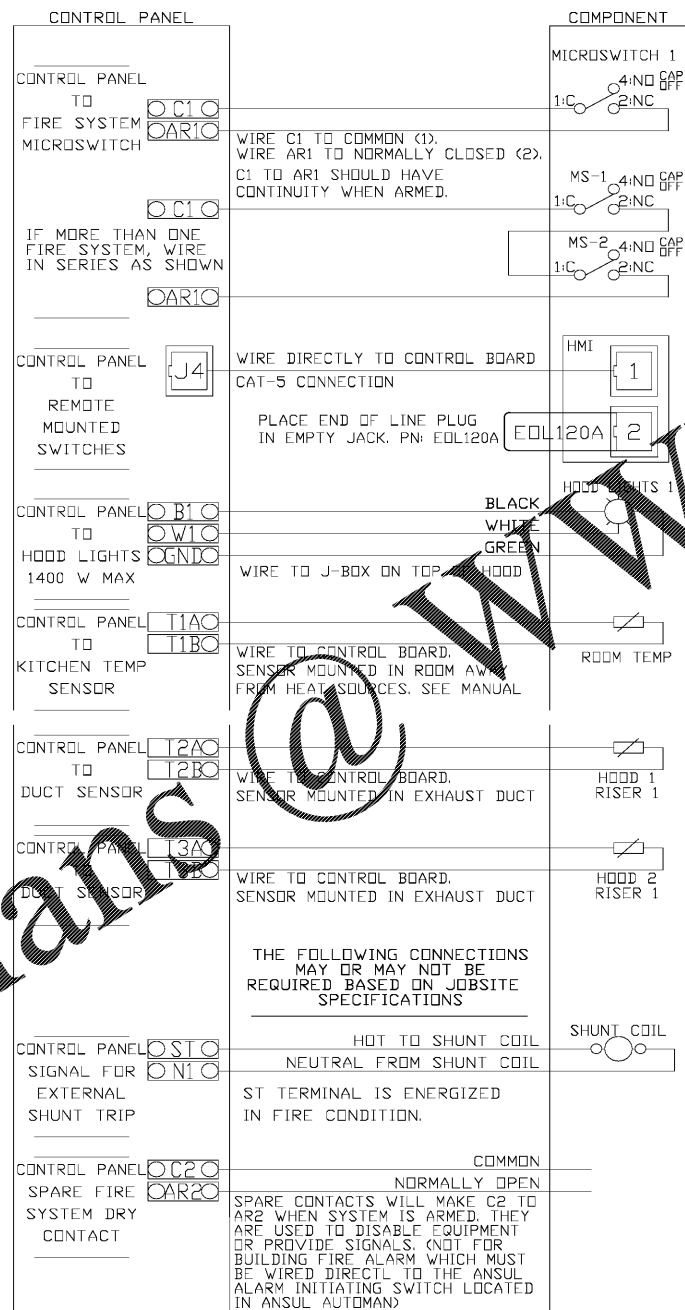
DATE: 5/15/2019
DWG.#: 3831774
DRAWN BY: AHJ-86
SCALE: 3/4" = 1'-0"
MASTER DRAWING

SHEET NO. 5

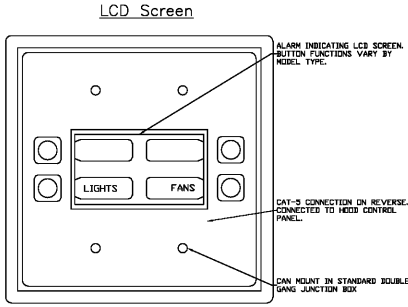
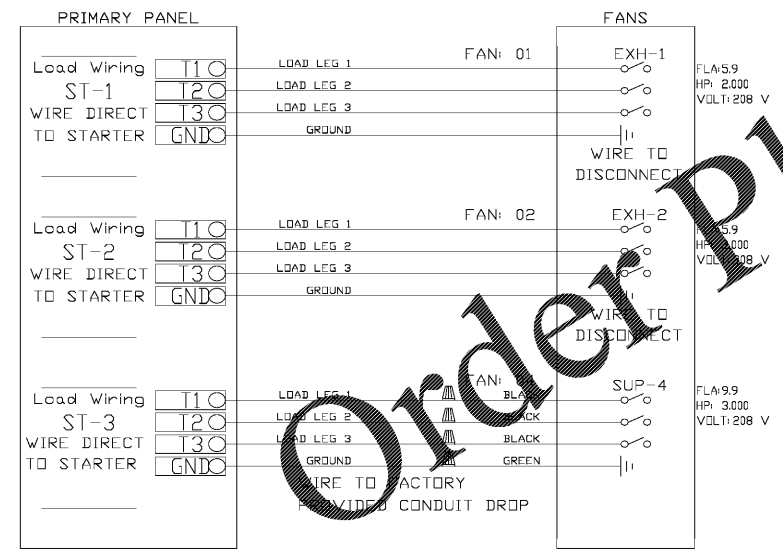
BREAKER PANEL TO PRIMARY CONTROL PANEL
Responsibility: Electrician
BREAKER SIZE SHOWN IS THE MAXIMUM ALLOWED



CONTROL PANEL TO ACCESSORY ITEMS
Responsibility: Electrician



CONTROL PANEL TO FANS
Responsibility: Electrician



NOTE: UNLESS OTHERWISE STATED, PANDA RESTAURANT GROUP SHALL PROVIDE ALL EQUIPMENT ON THE FOLLOWING CAPTIVEAIRE SHEETS, INCLUDING: HOODS, FIRE SYSTEM, EXHAUST FANS, SUPPLY FAN, BATHROOM FAN AND ELECTRICAL INTERLOCK PACKAGE.

ANSUL GAS VALVE:
THE ANSUL GAS VALVE IS PROVIDED BY CAPTIVEAIRE SYSTEMS. CONTACT OUR OFFICE WITH THE VALVE SIZE 3 DAYS IN ADVANCE OF WHEN IT IS NEEDED ON SITE.

FOR QUESTIONS CALL THE CAPTIVEAIRE SOUTHERN CALIFORNIA OFFICE
STONE MILL DESIGN CENTER
2915 RED HILL AVE, SUITE C106
COSTA MESA, CA 92626
TEL: 800-967-7701 EMAIL: REG86@CAPTIVEAIRE.COM

Order Plans @ www.LDILine.com

M-404

HOOD DETAIL PLAN