

HOOD INFORMATION - Job#3831774

HOOD NO.	TAG	MODEL	LENGTH	MAX. COOKING TEMP.	TOTAL EXH. CFM	EXHAUST PLENUM RISER(S)					MUA CFM	AC CFM	HOOD CONSTRUCTION	HOOD CONFIG.		
						WIDTH	LENG.	HEIGHT	DIA.	CFM				VEL.	S.P.	END TO END
1		4824 ND-2-ACPSP-F	10' 9"	600 Deg.	3225	12"	24"	4"	3225	1612	-0.544'	2580	484	430 SS Where Exposed	LEFT	ALONE
2		4824 ND-2-ACPSP-F	10' 9"	600 Deg.	3225	12"	24"	4"	3225	1612	-0.544'	2580	484	430 SS Where Exposed	RIGHT	ALONE

PATENT NUMBERS

AC-PSP (United States) - US Patent 7963830 B2
 AC-PSP Wall (Canada) - CA Patent 2820509
 AC-PSP Island (Canada) - CA Patent 2520330

HOOD INFORMATION

HOOD NO.	TAG	FILTER(S)				LIGHT(S)				UTILITY CABINET(S)				FIRE SYSTEM PIPING	HOOD HANGING WEIGHT	
		TYPE	QTY.	HEIGHT	LENGTH	EFFICIENCY @ 7 MICRONS	QTY.	TYPE	WIRE GUARD	LOCATION	SIZE	TYPE	SIZE			MODEL #
1		SS Baffle with Handles	8	20"	16"	30%	5	L55 Series E26	ND	Wall Mnt	12"x54"x24"	Ansul R102	3.0/3.0/3.0	SC-321110FP-SEP	1 Light 1 Fan	562 LBS
2		SS Baffle with Handles	8	20"	16"	30%	5	L55 Series E26	ND	Right	20"x48"x24"					651 LBS

HOOD OPTIONS

HOOD NO.	TAG	OPTION
1		LEFT END STANDOFF 3" Wide 48" Long

PERFORATED SUPPLY PLENUM(S)

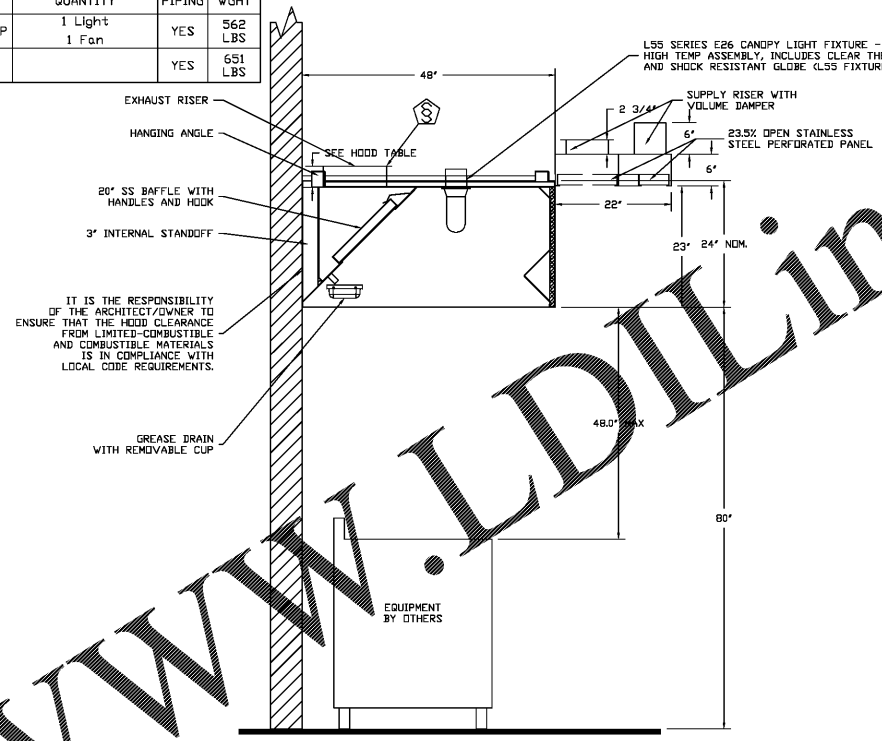
HOOD NO.	TAG	POS.	LENGTH	WIDTH	HEIGHT	TYPE	RISER(S)				
							WIDTH	LENG.	DIA.	CFM	S.P.
1		Front	132"	22"	6"	MJA	10"	28"		1290	0.554'
							10"	28"		1290	0.554'
							8"	242	0.141'		
							8"	242	0.141'		
2		Front	149"	22"	6"	MJA	10"	28"		1290	0.554'
							10"	28"		1290	0.554'
							8"	242	0.141'		
							8"	242	0.141'		

NOTE: UNLESS OTHERWISE STATED, PANDA RESTAURANT GROUP SHALL PROVIDE ALL EQUIPMENT ON THE FOLLOWING CAPTIVEAIRE SHEETS, INCLUDING HOODS, FIRE SYSTEM, EXHAUST FANS, SUPPLY FAN, BATHROOM FAN AND ELECTRICAL INTERLOCK PACKAGE.

ANSUL GAS VALVE:

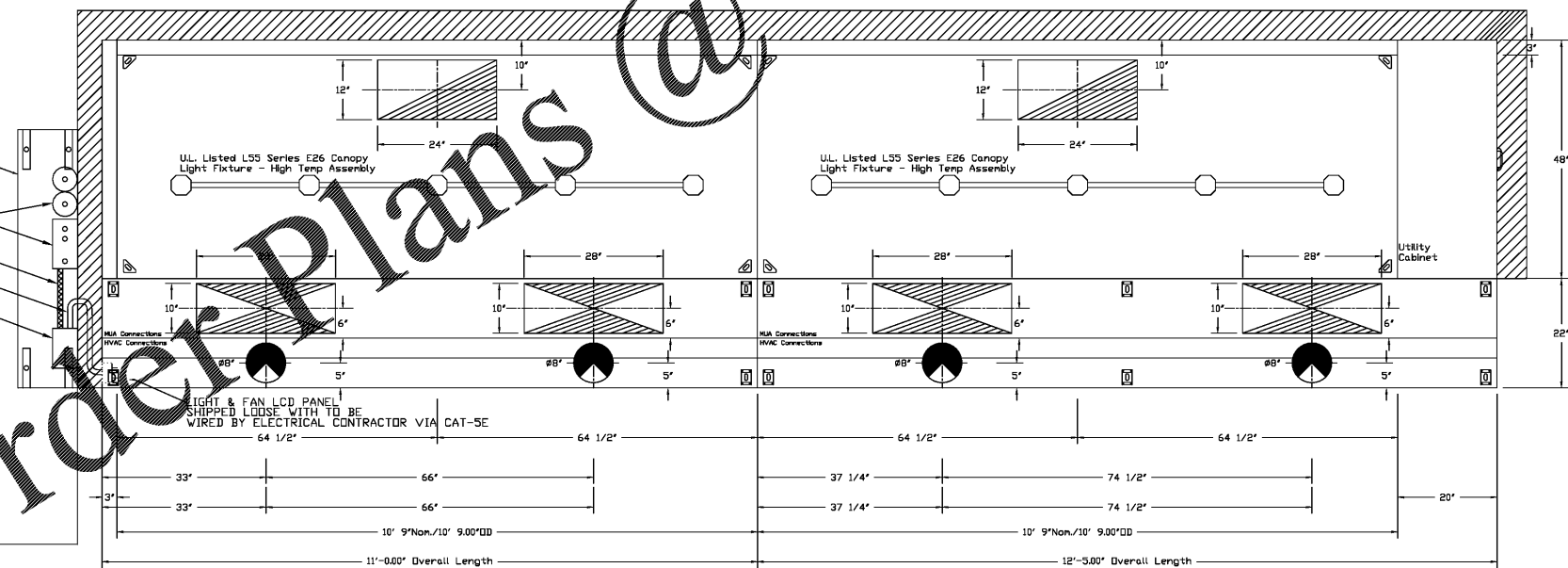
THE ANSUL GAS VALVE IS PROVIDED BY CAPTIVEAIRE SYSTEMS. CONTACT OUR OFFICE WITH THE VALVE SIZE 3 DAYS IN ADVANCE OF WHEN IT IS NEEDED ON SITE.

FOR QUESTIONS CALL THE CAPTIVEAIRE SOUTHERN CALIFORNIA OFFICE
 STONE MILL DESIGN CENTER
 2915 RED HILL AVE, SUITE C106
 COSTA MESA, CA 92626
 TEL: 800-967-7701 EMAIL: REG8@CAPTIVEAIRE.COM



SECTION VIEW - MODEL 4824ND-2-ACPSP-F HOOD - #1, #2

- WALL MOUNTED UTILITY CABINET DIMS 54"X12"X24" H TO BE FIELD INSTALLED BY HOOD INSTALLER
- ANSUL R-102 WET CHEMICAL FIRE SUPPRESSION SYSTEM
- FACTORY PREWIRED CONDUIT
- FIELD WIRED BY ELECTRICAL CONTRACTOR
- PREWIRED ELECTRICAL PACKAGE WITH FAN STARTERS AND SUPPLY FAN SHUT-DOWN RELAY. (SEE ELECTRICAL DRAWINGS FOR DETAILS)

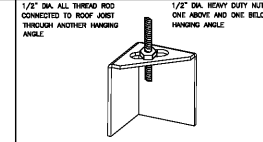


PLAN VIEW - Hood #1
 10' 9.00" LONG 4824ND-2-ACPSP-F

ACPSP ships loose for field installation

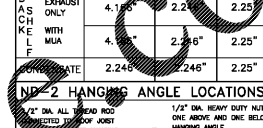
PLAN VIEW - Hood #2
 10' 9.00" LONG 4824ND-2-ACPSP-F

ACPSP ships loose for field installation



ND-2 HANGING ANGLE DETAIL

HOOD STYLE	DIM FROM REAR	DIM FROM FRONT (24\"/>	
ND-2	4.166"	2.246"	2.25"
EXHAUST ONLY WITH MUA	4.166"	2.246"	2.25"
EXHAUST ONLY WITH MUA	4.166"	2.246"	2.25"
EXHAUST ONLY WITH MUA	4.166"	2.246"	2.25"



ND HANGING ANGLE DETAIL

HOOD STYLE	DIM FROM REAR	DIM FROM FRONT (24\"/>
ND	5.00"	10.5\"/>
EXHAUST ONLY WITH MUA	5.00"	10.5\"/>
EXHAUST ONLY WITH MUA	5.00"	10.5\"/>
EXHAUST ONLY WITH MUA	5.00"	10.5\"/>

ND HANGING ANGLE LOCATIONS

HOOD STYLE	DIM FROM REAR	DIM FROM FRONT (24\"/>
ND	5.00"	10.5\"/>
EXHAUST ONLY WITH MUA	5.00"	10.5\"/>
EXHAUST ONLY WITH MUA	5.00"	10.5\"/>
EXHAUST ONLY WITH MUA	5.00"	10.5\"/>

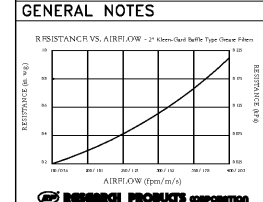
CAPTIVE-AIRE HOODS ARE BUILT IN COMPLIANCE WITH

 NFPA #96
 UL 710 & UL710 STANDARDS
 E.T.L. LISTED 3054804-001

BUILDING CODES

MATERIAL	CLEARANCE REDUCTION SYSTEM
NON-COMBUSTIBLE	NONE REQUIRED
LIMITED-COMBUSTIBLE	3\"/>
COMBUSTIBLE	3\"/>

- CLEARANCE TO COMBUSTIBLES**
- GENERAL NOTES:
1. FITTERICAL WORK-UP TO GAS MOTOR CONTROL SWITCHES, FAN SWITCHES, FAN WIRING, RELAYS, ETC. BY OTHERS.
 2. FIRE CHASE BY OTHERS. IF REQUIRED.
 3. ALL PIPING OF INSTANTATION SHALL COMPLY WITH NFPA 96.
 4. UL LISTED MECHANICAL HANGING SUPPORTS SHALL BE USED.
 5. PROTECT EXHAUSTS IN EXHAUST AIR SHEDS AS INDICATED TO ALL NEW CLEANING AT ALL BRANCH AND TRUNK RISES.
 6. EXHAUST DUCT TO BE 1/4\"/>
 7. FAN TO HAVE A MINIMUM OF 1\"/>
 8. MINIMUM EXHAUST DUCT TO BE 1\"/>
 9. FAN TO BE PROTECTED FROM COMBUSTIBLES PER NFPA 96.
 10. EXHAUST DUCT TO BE PROTECTED FROM COMBUSTIBLES PER NFPA 96 AND LOCAL CODE.
 11. BUILDING PRESSURE SHALL NOT EXCEED 0.5\"/>
 12. KITCHEN SHALL BE BALANCED TO BE NEGATIVE WITH RESPECT TO THE OUTSIDE ROOM.



REVISIONS

NO.	DESCRIPTION	DATE
1		
2		

DATE: 5/15/2019
DWG.#: 3831774
DRAWN BY: AHJ-86
SCALE: 3/4" = 1'-0"
MASTER DRAWING

SHEET NO.
 1

CAPTIVEAIRE
 Southern California Office
 3002 Dow Ave., Suite 410, Tustin, CA 92780 PHONE: (714) 957-1500 FAX: (919) 227-5975 EMAIL: reg8@captivaire.com



PANDA RESTAURANT GROUP INC.
 1683 Walnut Grove Ave.
 Rosemead, California
 91770
 Telephone: 626.799.9898
 Facsimile: 626.372.8288

All ideas, designs, arrangement and plans indicated or represented by this drawing are the property of Panda Express Inc. and were created for use on this specific project. None of these ideas, designs, arrangements or plans may be used by or disclosed to any person, firm, or corporation without the written permission of Panda Express Inc.

REVISIONS:

NO.	DESCRIPTION	DATE
1	05.29.19 ISSUE FOR PERMIT	
2	08.05.13 ISSUE FOR BID	

DRAWN BY:
 PANDA PROJECT # - S4-20-D7060
 C&P PROJECT # - 2190238

Cuhaci & Peterson
 Architects Engineers Planners
 1925 Prospect Ave. Orlando, FL 32814
 P (407) 661-9100
 F (407) 661-9101
 www.c&p.com
 Florida Corporate Certificate #000226

08.05.2019

Panda Express - Marietta GA (SA-20-D7060)
 3460 SANDY PINES RD, NE SUITE 210
 MARIETTA, GA, 30066

PANDA EXPRESS
 TRUE WARM AND WELCOME
 3460 SANDY PINES RD, NE SUITE 210
 MARIETTA, GA 30066

M-400
 HOOD DETAIL PLAN