



PANDA RESTAURANT GROUP INC.  
 1683 Walnut Grove Ave.  
 Rosemead, California  
 91770  
 Telephone: 626.799.9898  
 Facsimile: 626.372.8288

All ideas, designs, arrangement and plans indicated or represented by this drawing are the property of Panda Express Inc. and were created for use on this specific project. None of these ideas, designs, arrangements or plans may be used by or disclosed to any person, firm, or corporation without the written permission of Panda Express Inc.

REVISIONS:

1	08.08.19	ISSUE FOR BID

ISSUE DATE:

1	05.29.19	ISSUE FOR PERMIT
2	08.08.19	ISSUE FOR BID

DRAWN BY: LJD, JDV

PANDA PROJECT # - S4-20-D7060  
 C&P PROJECT # - 2190238



1925 Prospect Ave. Orlando, FL 32814  
 P (407) 661-9100  
 F (407) 661-9101  
 Panda Express Certificate # 00828

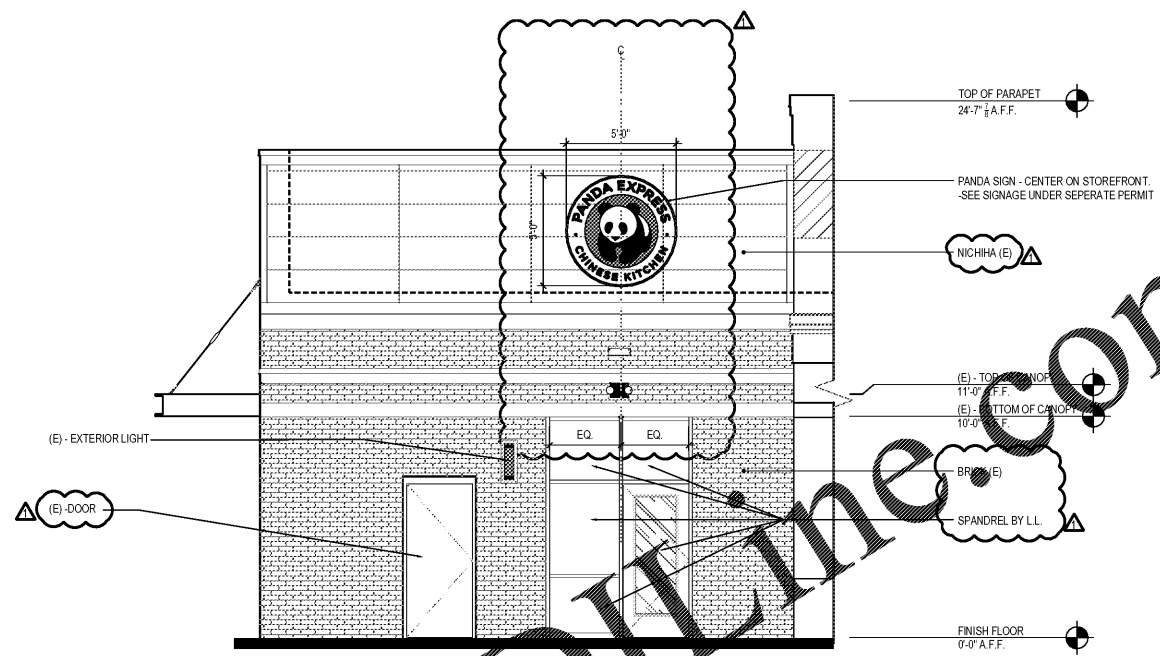
08.08.2019



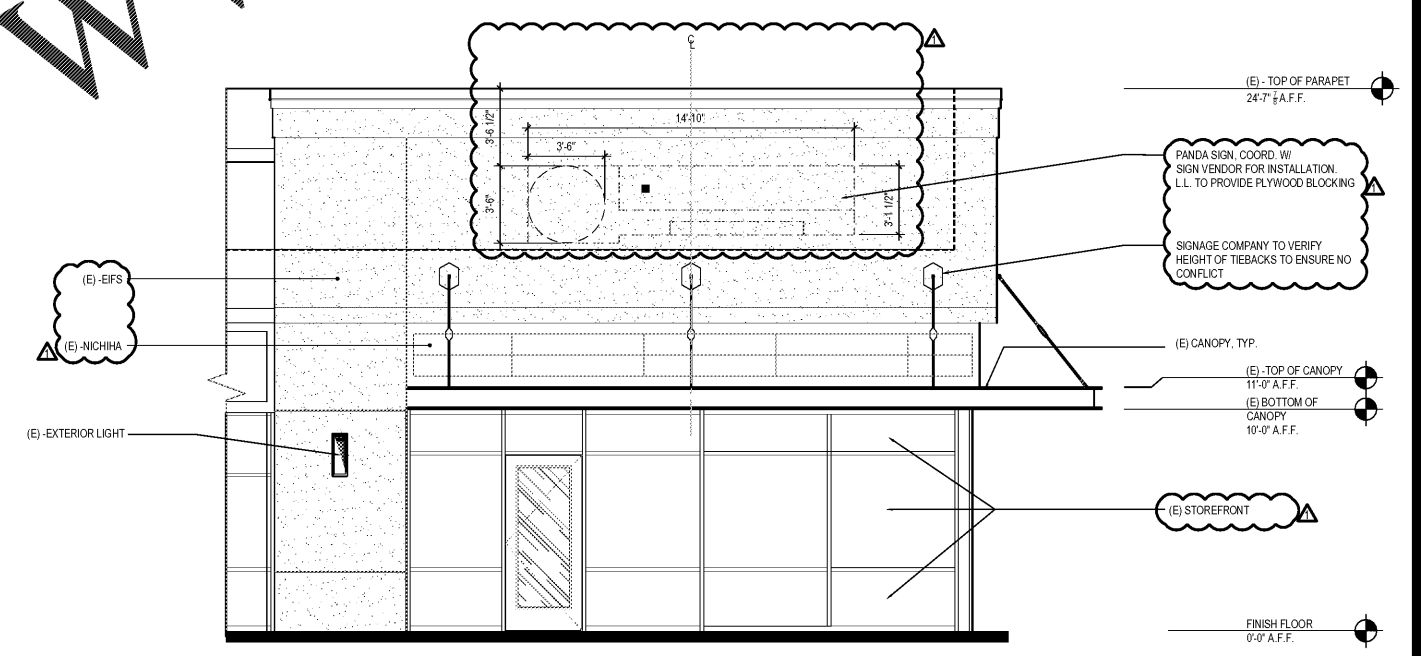
**PANDA EXPRESS**  
 TRUE WARM AND WELCOME  
 3460 SANDY PLAINS RD, NE SUITE 210  
 MARIETTA, GA 30066

**A-200**

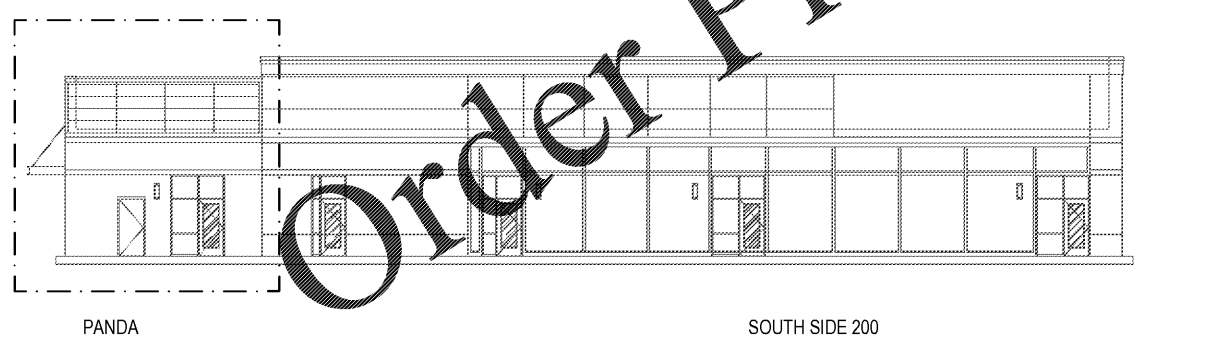
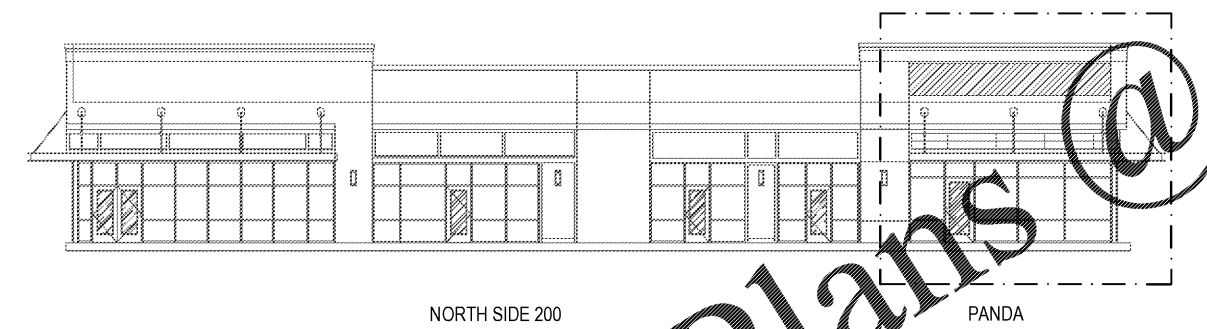
EXTERIOR ELEVATIONS



REAR ELEVATION (EXISTING) 2  
 Scale= 1/4" = 1'-0" A-200



FRONT ELEVATION (EXISTING) 1  
 Scale= 1/4" = 1'-0" A-200



KEY ELEVATIONS FOR REFERENCE 3  
 Scale= NTS A-200

Order Plans @

WWW.LDLINE.COM