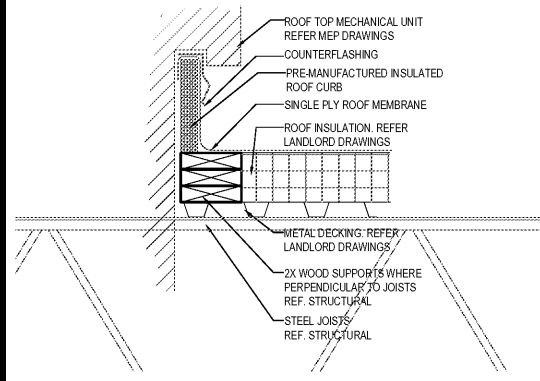


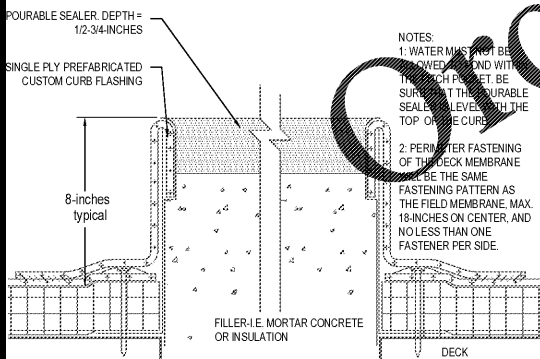
ROOF WALKWAY PAD DETAIL 4

Scale= NTS A-107



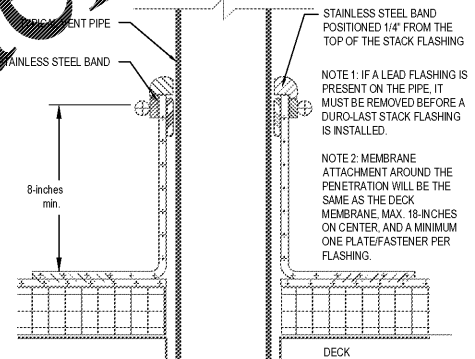
MECHANICAL CURB DETAIL 18

Scale= NTS A-107



PITCH POCKET DETAIL 17

Scale= NTS A-107



PLUMBING VENT DETAIL 13

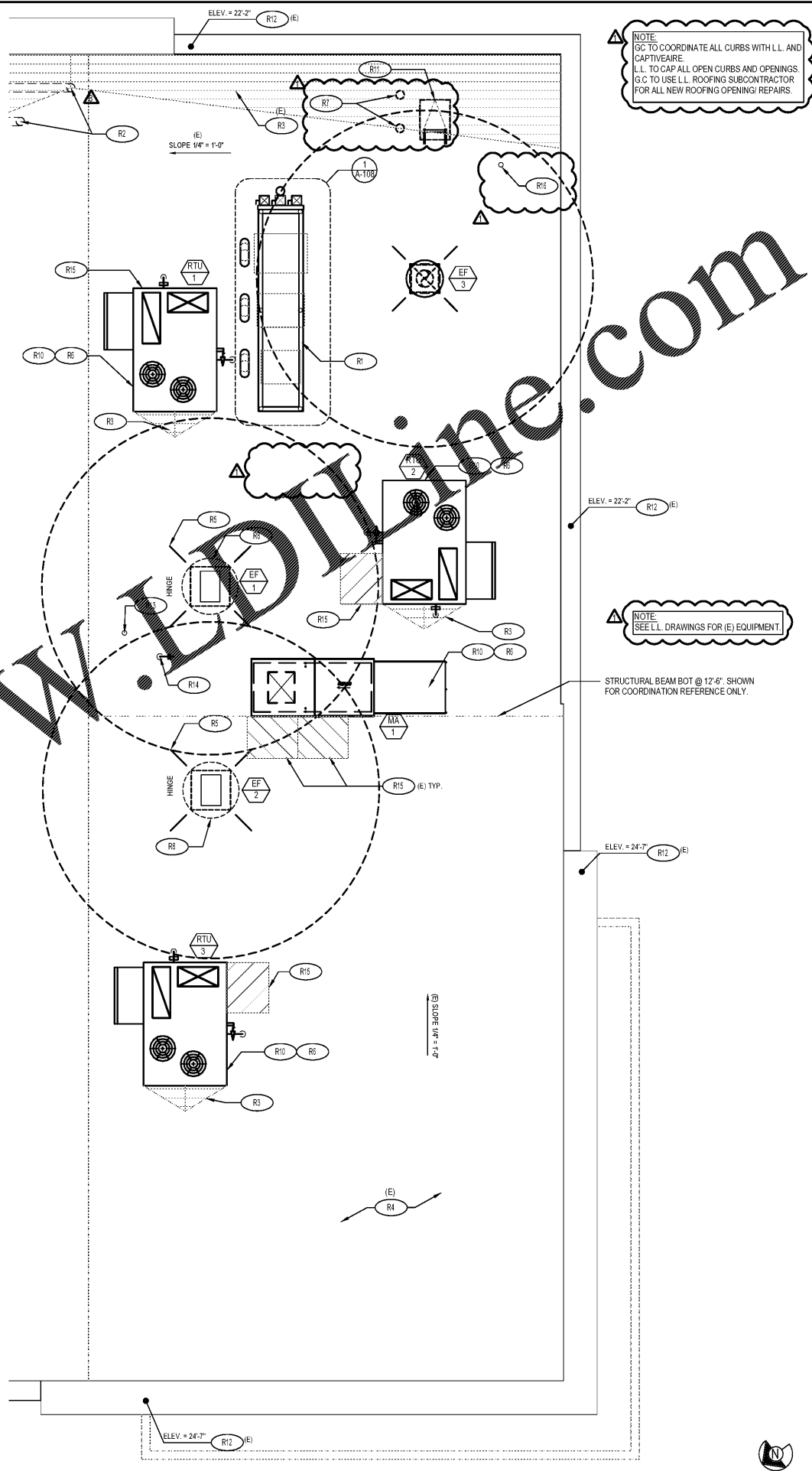
Scale= NTS A-107

ROOF PLAN NOTES:

- EXISTING METAL ROOF DECKING BY LANDLORD DRAWINGS
- +6' INDICATES APPROXIMATE ELEVATION OF THE TOP OF ROOF PLYWOOD SHEATHING AT PLYWOOD CRICKET. SEE TRUSS DRAWINGS FOR ACTUAL ROOF SLOPE. ALL ROOF ELEVATIONS ARE GIVEN FROM TOP OF INTERIOR CONCRETE FLOOR SLAB (U.O.N.) WHEN FLOOR SLAB STEPS, ELEVATIONS ARE REFERENCED FROM THE HIGHEST FINISHED FLOOR.
- ANY PROJECTION THROUGH ROOF SHALL BE DETAILED PER THE SINGLE FLY ROOFING MANUFACTURER'S RECOMMENDED DETAILS.
- ALL EXHAUST FANS AND AIR CONDITIONING EQUIPMENT DESIGNATIONS ARE TAKEN FROM MECHANICAL DRAWINGS.
- NOT USED.
- CONTRACTOR SHALL CONFIRM THAT ALL AREAS OF ROOF ARE PROVIDED WITH POSITIVE DRAINAGE.
- ALL ROOF PENETRATIONS FOR PLUMBING VENTS, POWER CONDUNTS, ETC. SHALL BE FLASHED PER BUILDING SPECIFICATIONS AND DETAILS. VENTS SHALL BE AT LEAST 10'-0" HORIZONTAL OR 3'-0" ABOVE OUTSIDE AIR INTAKES (A/C UNITS, MAKE-UP AIR).
- CONTRACTOR BE RESPONSIBLE FOR COORDINATION OF SIZES AND LOCATIONS OF ROOF OPENINGS (VENTS, DUCTS, ETC.), PLATFORMS, BASES ETC. COORDINATE SIZES OF MECHANICAL EQUIPMENT PLATFORMS, BASES, ROOF EQUIPMENT PLATFORMS AND OPENINGS SHOWN ON DRAWINGS WITH EQUIPMENT BEING SUPPLIED. SEE TYPICAL DETAILS ON THIS SHEET ALSO COORDINATE INSTALLATION OF LIGHTING, POWER, CONVENIENCE OUTLETS ETC.
- FOR ALL STRUCTURAL FRAMING MEMBERS, SIZES, AND ADDITIONAL INFORMATION, SEE STRUCTURAL DRAWINGS.
- PROVIDE ROOF CRICKET AT MECHANICAL EQUIPMENT PLATFORMS TO ASSURE POSITIVE ROOF DRAIN.
- ALL ROOF EQUIPMENT TO BE SCREENED FROM PUBLIC VIEW.
- ROOFTOP EQUIPMENT TO BE MAINTAINED AT LEAST 10' MINIMUM FROM TOWERS FOR SERVICING
- PROVIDE SERVICE PAD AT EACH UNIT ON ROOF SERVICE ACCESS DOOR.
- ALL GAS PIPING ON ROOF TO BE PAINTED SAFETY YELLOW
- ALL NEW PENETRATIONS IN ROOF SHALL BE PERFORMED BY LANDLORD'S BONDING ROOFING CONTRACTOR

ROOF PLAN KEYNOTES:

- R1 ROOF EQUIPMENT TRACK (SEE SHEET A-108)
- R2 EXISTING 6" ROOF DRAIN AND OVERFLOW DRAIN
- R3 CRICKET TO ASSURE POSITIVE ROOF DRAINAGE
- R4 METAL ROOF DECKING. SEE ROOF PLAN NOTE #1
- R5 POWER SUPPLY LOCATION FOR ROOFTOP EXHAUST FANS FOR KITCHEN HOOD
- R6 ROOF TOP MECHANICAL UNIT SEE MECHANICAL DRAWINGS
- R7 WATER HEATER VENT - SEE MEP PLANS. OFFSET VENTS AS REQUIRED TO MAINTAIN MIN. 10'-0" AWAY FROM AIR INTAKE SYSTEMS ON EQUIPMENT.
- R8 EXHAUST FAN PROVIDED BY LL
- R9 MECHANICAL UNIT CURB. SEE DETAIL 18A-107 PER LL
- R10 EXISTING ROOF ACCESS HATCH
- R11 TOP OF EXISTING PARAPET. SEE LANDLORD DRAWINGS
- R12 PLUMBING VENT 13 A-107
- R13 WEATHER PROOF HYDRANT
- R14 PROVIDE WALK-WAY PAD AS SHOWN. REFERENCE DETAIL 4/A-107
- R15 ALL RIGID METAL CONDUIT & WEATHERHEAD AND PULL STRING FOR SATELLITE CABLE. EXACT LOCATION ON ROOF TO BE COORDINATED WITH PANDA PROJECT MANAGER AND SERVICE PROVIDER. REFER TO E-104A-108 FOR SIZE AND INSTALLATION.



NOTE: GC TO COORDINATE ALL CURBS WITH LL AND CAPTURE ARE. LL TO CAP ALL OPEN CURBS AND OPENINGS GC TO USE LL ROOFING SUBCONTRACTOR FOR ALL NEW ROOFING OPENING/ REPAIRS.

NOTE: SEE LL DRAWINGS FOR (E) EQUIPMENT

STRUCTURAL BEAM BOT @ 12'-6" SHOWN FOR COORDINATION REFERENCE ONLY.



PANDA RESTAURANT GROUP INC.
1683 Walnut Grove Ave.
Rosemead, California 91770
Telephone: 626.799.9898
Facsimile: 626.372.8288

All ideas, designs, arrangement and plans indicated or represented by this drawing are the property of Panda Express Inc. and were created for use on this specific project. None of these ideas, designs, arrangements or plans may be used by or disclosed to any person, firm, or corporation without the written permission of Panda Express Inc.

REVISIONS:

1	08.08.19	ISSUE FOR BID

ISSUE DATE:

1	05.29.19	ISSUE FOR PERMIT
2	08.08.19	ISSUE FOR BID

DRAWN BY: AL, JDV, JR

PANDA PROJECT # - S4-20-D7060
C&P PROJECT # - 2190238



PANDA EXPRESS
TRUE WARM AND WELCOME
3460 SANDY PLAINS RD, NE SUITE 210
MARIETTA, GA 30066

A-107

ROOF PLAN

ROOF PLAN 1

Scale= 1/4" = 1'-0" A-107