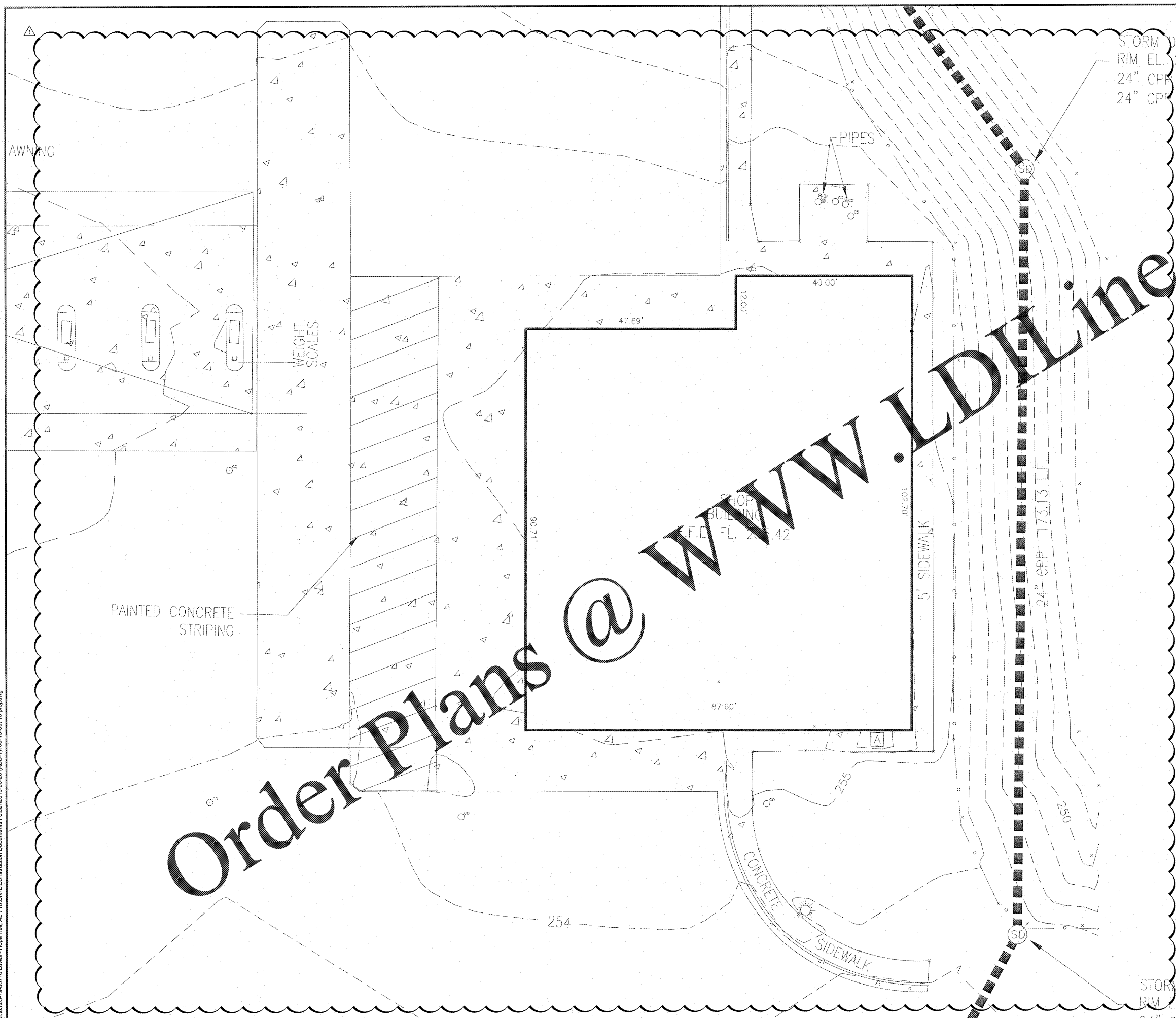
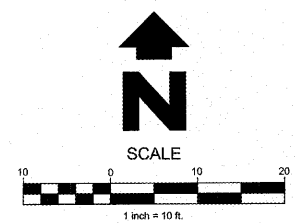


Jun21, 2019 10:18am - User: sash.bryant  
M:\03\03-19-60718 Loves - Hope Hull, AL 718\CIVIL Construction Documents\Folder\2019-06-20 (ADD-1) 03-19-60718 proj.dwg



STORM DRAIN  
RIM EL. 24  
24" C.P.P. IN  
24" C.P.P. IN



**HFA**  
ARCHITECTS  
ENGINEERS  
INTERIORS

**HARRISON FRENCH**  
& ASSOCIATES, LTD

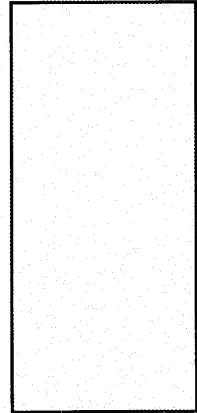
1705 S. Walton Blvd., Suite 3  
Bentonville, Arkansas 72712  
t 479.273.7780  
f 888.520.9685  
www.hfa-ae.com

STIPULATION FOR REUSE  
THIS DRAWING WAS PREPARED FOR USE  
IN CONNECTION WITH THE PROJECT  
IDENTIFIED HEREIN. IT IS NOT TO BE  
REPRODUCED OR TRANSMITTED IN ANY  
FORM OR BY ANY MEANS, ELECTRONIC OR  
MECHANICAL, INCLUDING PHOTOCOPYING,  
RECORDING, OR BY ANY INFORMATION  
SYSTEMS WITHOUT THE WRITTEN  
PERMISSION OF HARRISON FRENCH &  
ASSOCIATES, LTD. ANY REUSE OF THIS  
DRAWING WITHOUT THE WRITTEN  
PERMISSION OF HARRISON FRENCH &  
ASSOCIATES, LTD. MAY BE CONSIDERED TO  
BE A VIOLATION OF THE LAW.

1127 TYSON RD  
HOPE HULL, AL 36043

**SPEEDCO REMODEL**  
PROJECT NUMBER: 03-19-60718

**Loves**  
Travel Stop &  
Country Stores



ISSUE BLOCK		
NO.	DESCRIPTION	DATE
1	CTP	4-11-19
2	ADD-1	6-24-19

STORE NO. 718  
DOCUMENT DATE: 4/11/19  
CHECKED BY: DRG  
DRAWN BY: SAB  
PROTO CYCLE:

**SURVEY PROVIDED BY:**  
PLS GROUP, INC.  
752 SOUTH MEMORIAL DRIVE  
PRATTVILLE, AL 36067  
334-264-0264

EXISTING GRADES

SHEET:  
**YCV1**

Order Plans @ [www.LDLine.com](http://www.LDLine.com)