

LIGHTING FIXTURE SCHEDULE

TYPE	MANUFACTURER	CATALOG #	DESCRIPTION	VOLTS	WATTS	MOUNTING	REMARKS	FURNISHED BY
CCW	EATON	GLEON-AF-04-LED-E1-SL4-BZ-WM	LED WALL MOUNT FLOOD FIXTURE	120	258	WALL	MOUNT ON WALL	OWNER
EM3	LITHONIA	ELA LED T WP M12	EMERGENCY LIGHT	9.6	1	CEILING / WALL	REMOTE EMERGENCY FIXTURE HEADS	OWNER
GG	US LED	DS-402U-2-UNV-QB3-NC-1-L	LED WALL PACK	120	42.5	WALL	WALL PACK	OWNER
MI	BODINE	ELI-S-250	EMERGENCY LIGHTING INVERTER	120	250	SURFACE	90 MINUTE EMERGENCY INVERTER	OWNER
T4E	EATON	4SNLED-LD5-64HL-UNV-L850-CD1-EL14W-LOV-U	4' LINEAR LED STRIP LIGHT, EMERGENCY	120	43	SURFACE	MOUNT TO BOTTOM OF METAL FRAMING	OWNER
TC	EATON	HBLED-LD5-18SE-WV-UNV-L850-ED2-U	LED HIGH BAY	120	131	PENDANT	PENDANT MOUNT AT 18'-0" TO BOTTOM OF FIXTURE	OWNER
TCD	EATON	HBLED-LD5-18SE-WV-UNV-L850-CD2-U	DIMMABLE LED HIGH BAY	120	131	PENDANT	PENDANT MOUNT AT 18'-0" TO BOTTOM OF FIXTURE	OWNER
TD	CROUSE-HINDS	MLL4/UNV1 TF / DP1050MTK	EXPLOSION PROOF FIXTURE / MOUNTING BRACKET	120	54.5	SURFACE	USE CEILING MOUNT BRACKET	OWNER
TDE	CROUSE-HINDS	MLL4/UNV1 S803 TF EM / DP1050MTK	EMERGENCY EXPLOSION PROOF FIXTURE / MOUNTING BRACKET	120	54.5	SURFACE	USE CEILING MOUNT BRACKET	OWNER
X	LITHONIA	LHQM LED R HO M6	EXIT SIGN W/HO BATTERY AND BUG EYES	120	3	CEILING / WALL	EMERGENCY FIXTURE WITH 90 MINUTE BATTERY BACK-UP	OWNER

PANELBOARD NOTES ()

- TERMINATE GROUND ON ISOLATED GROUND BUS.
- INSTALL LOCKING DEVICE FURNISHED WITH PANELBOARD (LOCK-OFF FOR MAINTENANCE).
- INSTALL LOCKING DEVICE FURNISHED WITH PANELBOARD (LOCK-ON FOR CRITICAL LOAD).
- GFI BREAKER FOR PERSONNEL PROTECTION (5 mA).
- GFI BREAKER FOR EQUIPMENT PROTECTION (30 mA).
- CONDUCTOR SIZE HAS BEEN INCREASED FOR VOLTAGE DROP. SIZE EQUIPMENT GROUNDING CONDUCTOR PROPORTIONALLY PER NEC.
- FACTORY WIRE TO LOAD.
- THRU CONTACTOR.
- EXISTING CIRCUIT BREAKER TO REMAIN. VERIFY CONDITION OF CIRCUIT BREAKER TO ENSURE THAT THIS OPERATION MEETS ALL U.L. RATINGS.
- EXISTING CIRCUIT TO REMAIN.
- PROVIDE HANDLE LOCK OFF DEVICE TO LOCK "SPARE" CIRCUIT BREAKER IN THE "OFF" POSITION. IF CIRCUIT BREAKER IS IDENTIFIED AS "EXISTING" FIELD VERIFY CIRCUIT BREAKER INDICATED IS NOT CONNECTED TO ANY LOAD AND UPDATE PANELBOARD CIRCUIT DIRECTORY IDENTIFYING CIRCUIT AS "SPARE".
- TRACE EXISTING CIRCUIT, IDENTIFY LOAD AND PROVIDE COMPLETE TYPEWRITTEN PANELBOARD IDENTIFICATION SCHEDULE AND PLACE ON INTERIOR OF PANELBOARD DOOR. IF CIRCUIT IS A "SPARE" THEN REFER TO PANELBOARD NOTE (11).
- PROVIDE LISTED HANDLE TIE AS INDICATED FOR MULTIWIRE BRANCH CIRCUIT.
- REFER TO ONE-LINE DIAGRAM FOR WIRE SIZES.
- NEW

HFA ARCHITECTS ENGINEERS INTERIORS
HARRISON FRENCH & ASSOCIATES, LTD
 1705 S. Walton Blvd., Suite 3
 Bentonville, Arkansas 72712
 t 479.273.7780
 f 888.520.9685
 www.hf-a.com

STIPULATION FOR REUSE
 THIS DRAWING WAS PREPARED FOR THE USE OF THE PROJECT AND SITE SPECIFIC CONDITIONS. IT IS NOT TO BE REPRODUCED OR COPIED IN ANY MANNER WITHOUT THE WRITTEN PERMISSION OF THE ARCHITECT. ANY REUSE OF THIS DRAWING FOR ANY OTHER PROJECT WITHOUT THE WRITTEN PERMISSION OF THE ARCHITECT IS STRICTLY PROHIBITED AND WILL BE CONSIDERED A VIOLATION OF THE PROFESSIONAL ETHICS OF THE ARCHITECT.

1127 TYSON RD
 HOPE HULL, AL 36043
Speedco Remodel
 PROJECT NUMBER: 03-19-60718

Love's Travel Stop & Country Stores

ALABAMA LICENSED
 No. 97747
 PROFESSIONAL ENGINEER
 WITH AUTHORITY TO SEAL
 JUN 25 2019

ISSUE BLOCK
 06/21/19 ADD #1

STORE NO. 718
 DOCUMENT DATE: 04/11/19
 CHECKED BY: NKC
 DRAWN BY: CAR
 PROTO CYCLE:

SCHEDULES & NOTES
 SHEET: YE2

LT2 NEW PANELBOARD
 208Y/120V, 3PH, 4W
 100A M.L.O.
 10,000 AIC
 SURFACE MOUNT
 GROUND BAR

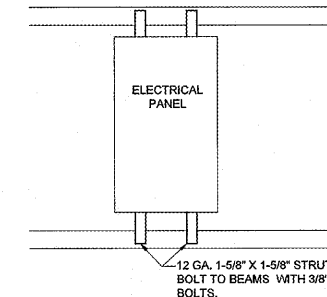
SERVES: TIRE SHOP
 LOCATION: TIRE STORAGE
 FED FROM: PANEL LT
 OVERCURRENT DEVICE: 100A

CK	LOAD SERVED	WIRE	BRKR	PL	PHASE A	PHASE B	PHASE C	PL	BRKR	WIRE	LOAD SERVED	CK	
1	LTG - OIL PIT (N)	12	20	1	1.09	0.56		2	20	12	ADO-5 (N)	2	
3	LTG - OIL PIT (N)	12	20	1		0.79	0.56				208V/1PH	4	
5	LTG - SERVICE BAY EMERG (N)	12	20	1			0.39	0.56	2	20	12	ADO-6 (N)	6
7	FUEL MONITORING PANEL (N)	12	20	1	1.20	0.56					208V/1PH	8	
9	EF-5 (N)	12	20	1		1.66	1.20		1	20	12	OIL PIT SUMP PUMP (N,4)	10
11	EF-6 (N)	12	20	1			1.86	1.20	1	20	12	OIL PIT SUMP PUMP (N,4)	12
13	EF-7 (N)	12	20	1	0.53	1.08			1	20	12	REC - SERVICE BAY (N)	14
15	ADO-7 (N)	12	20	2		0.56	0.90		1	20	12	REC - SERVICE BAY (N)	16
17	208V/1PH						0.56	0.36	1	20	12	MADDENCO (N)	18
19	ADO-8 (N)	12	20	2	0.56	0.00			1	20		SPARE (N)	20
21	208V/1PH					0.56	0.00		1	20		SPARE (N)	22
23	REC - SERVICE BAY (N)						1.08	0.00	1	20		SPARE (N)	24
25	SPARE (N)				0.00	0.00			1	20		SPARE (N)	26
27	SPARE (N)				0.00	0.00			1	20		SPARE (N)	28
29	SPARE (N)						0.00	0.00	1	20		SPARE (N)	30
31	SPACE				0.00	0.00						SPACE	32
33	SPACE					0.00	0.00					SPACE	34
35	SPACE						0.00	0.00				SPACE	36
37	SPACE				0.00	0.00						SPACE	38
39	SPACE					0.00	0.00					SPACE	40
41	SPACE						0.00	0.00				SPACE	42
		TOTAL CONNECTED			5.58	6.22					5.81	KVA	
		TOTAL CONNECTED			46.5	51.9					48.4	AMPS	
		TOTAL LOAD			17.6	KVA					48.9	AMPS	
		PER NEC ARTICLE 220 FEEDER LOAD			18.6	KVA					51.6	AMPS	

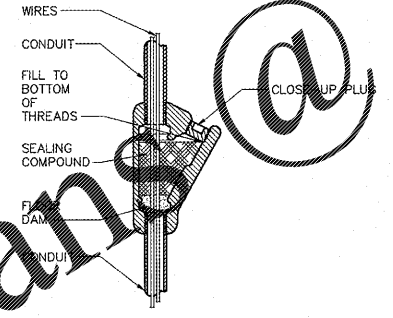
LT EXISTING PANELBOARD
 208Y/120V, 3PH, 4W
 600A M.L.O.
 10,000 AIC
 SURFACE MOUNT
 GROUND BAR
 ISOLATED GROUND BUS

SERVES: TIRE SHOP
 LOCATION: TIRE STORAGE
 FED FROM: EXTERIOR DISCONNECT
 OVERCURRENT DEVICE: 600A

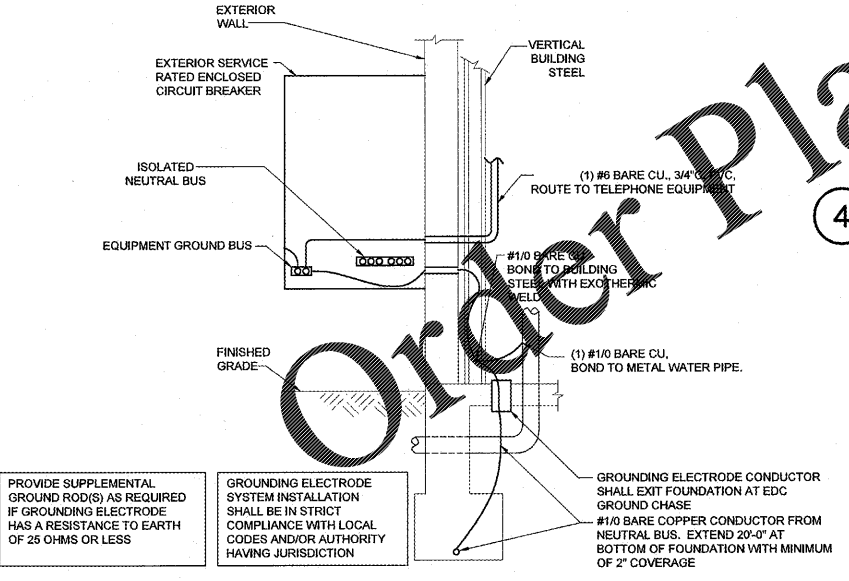
CK	LOAD SERVED	WIRE	BRKR	PL	PHASE A	PHASE B	PHASE C	PL	BRKR	WIRE	LOAD SERVED	CK	
1	air compressor (10)		90	3	5.54	1.56			2	30	hp-1 (10)	4	
3						5.54	1.56					4	
5							5.54	1.20	1	20	12	SPARE (N)	6
7	tire balancer (10)		30	3	1.60	1.20			1	20	12	BLDG SIGNS (2,8,9)	8
9						1.60	0.70		1	20		dryer	10
11							1.50		1	20		spread (10)	12
13	WELDER (9)	6	50	2	4.20	0.20			1	20		fresh air (10)	14
15	208V/1PH					4.20	0.55		2	20		ef-1-3 (10)	16
17	WELDER (9)	6	50	2		4.20	0.72		2	20		rec - lobby (10)	18
19	208V/1PH				4.20	1.20			1	20		rec - storage (10)	20
21	fig - service bay (10)		20	1		1.17	0.92		1	20		rec - service bay (10)	22
23	fig - service bay (10)		20	1			0.92		1	20		rec - service bay (10)	24
25	fig - service bay (10)		20	1	0.87	0.92			1	20		rec - service bay, wp (10)	26
27	ewc (10)		1	1		0.50	5.26		2	50		ahu-1 (10)	28
29	fig - storage (10)		1	1			1.30	5.20					30
31	fig - lobby, service (10)		20	1	1.24	1.20			1	20		motorized door - stor (10)	32
33	fig - exterior (10)		20	1		0.73	0.45		1	20		rec - restroom (10)	34
35	directional sign (10)		20	1			0.24	0.56	2	20		ewh-1 (10)	36
37	lg rec - counter (10)		20	1	0.98	0.56							38
39	dwh-1 (10)		3	1		1.33	0.82		1	20		rec - service, wp (10)	40
41							1.33	1.20	1	20		motorized door - shop (10)	42
43					1.33	1.20			1	20		motorized door - shop (10)	44
45	ef-5 (10)		20	1		1.15	1.20		1	20		motorized door - shop (10)	46
47	ef-6 (10)		20	1			1.15	1.20	1	20		motorized door - shop (10)	48
49	rec - sump (10)		20	1	1.20	2.50			2	35		uh-1 (10)	50
51						0.86	2.50						52
53	SPARE (N)	12	20	1			1.20	2.50	2	35		uh-2 (10)	54
55	portable welder (10)		50	2	2.77	2.50							56
57						2.77	2.50		2	35		uh-3 (10)	58
59	fig - pk lot (10)		30	2			1.11	2.50					60
61					1.12	2.50			2	35		uh-4 (10)	62
63	fig - pk lot (10)		30	2		1.11	2.50						64
65							1.12	1.50	2	20		uh-5 (10)	66
67	BLDG SIGNS (2,8,9)	12	20	1	1.20	1.50			1	20	12	HEART SIGNS (2,8,9)	70
69	rec - training trailer (10)		50	2		4.00	0.40		1	20	12	HEART SIGNS (2,8,9)	72
71							4.00	0.40	1	20	12	HEART SIGNS (2,8,9)	74
73	spare (11)		20	1	0.00	0.00			1	20		space (11)	76
75	space		20	1		0.00	0.00		1	20		space	78
77	space		20	1			0.00	0.00	1	20		space	80
79	space		20	1	0.00	5.58			3	100		PANEL LT2 (N,14)	82
81	space		20	1		0.00	6.22						84
83	space		20	1			0.00	5.81					
		TOTAL CONNECTED			48.8	50.5					48.2	KVA	
		TOTAL CONNECTED			406.9	420.6					401.9	AMPS	
		TOTAL LOAD			147.5	KVA					408.5	AMPS	
		PER NEC ARTICLE 220 FEEDER LOAD			156.3	KVA					434.0	AMPS	



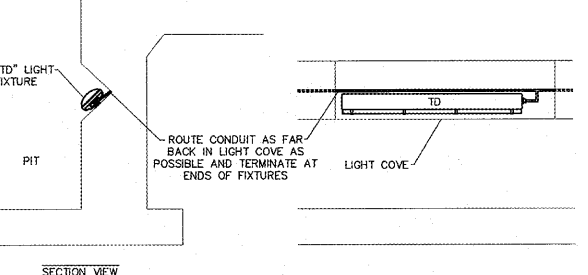
STANDARD ELECTRICAL PANEL MOUNTING DETAIL
 SCALE: N.T.S.



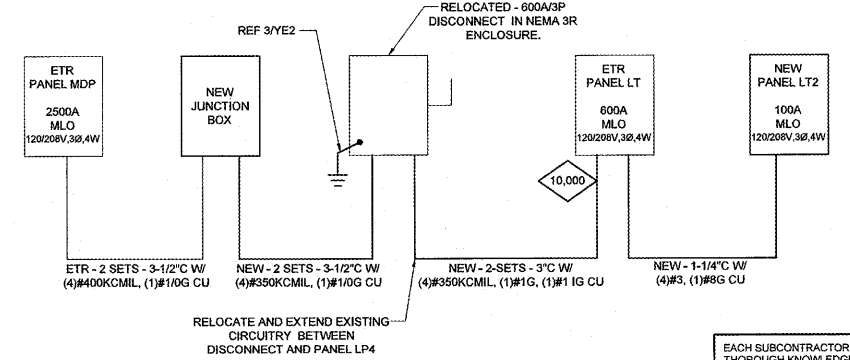
CONDUIT SEAL-OFF
 N.T.S.



GROUNDING ELECTRODE SYSTEM
 N.T.S.



PIT LIGHT MOUNTING DETAIL
 N.T.S.



PARTIAL ONE-LINE DIAGRAM
 N.T.S.

XXXXX REPRESENTS THE AVAILABLE FAULT CURRENT IN RMS SYMMETRICAL AMPS AT THE RESPECTIVE TRANSFORMER, PANELBOARD, OR EQUIPMENT.

EACH SUBCONTRACTOR IS RESPONSIBLE FOR HAVING A THOROUGH KNOWLEDGE OF ALL DRAWINGS AND SPECIFICATIONS IN THEIR RELATED FIELD. THE FAILURE TO ACQUAINT HIMSELF WITH THIS KNOWLEDGE DOES NOT RELIEVE THE RESPONSIBILITY OF PERFORMING HIS WORK PROPERLY. NO ADDITIONAL COMPENSATION SHALL BE ALLOWED BECAUSE OF CONDITIONS THAT OCCUR DUE TO FAILURE TO FAMILIARIZE WORKERS WITH THIS KNOWLEDGE.