

EXISTING CONDITIONS WERE TAKEN FROM ORIGINAL DRAWINGS AND MAY NOT REFLECT EXACT "AS-BUILT" CONDITIONS. CONTRACTOR SHALL FIELD VERIFY ALL EXISTING CONDITIONS PRIOR TO SUBMITTING FINAL BIDS. CONTRACTOR SHALL CAREFULLY COORDINATE NEW WORK AND DEMOLITION WITH ALL OTHER DISCIPLINES AND EXISTING CONDITIONS.

EACH SUBCONTRACTOR IS RESPONSIBLE FOR HAVING A THOROUGH KNOWLEDGE OF ALL DRAWINGS AND SPECIFICATIONS IN THEIR RELATED FIELD. THE FAILURE TO ACQUAINT HIMSELF WITH THIS KNOWLEDGE DOES NOT RELIEVE THE RESPONSIBILITY OF PERFORMING HIS WORK PROPERLY. NO ADDITIONAL COMPENSATION SHALL BE ALLOWED BECAUSE OF CONDITIONS THAT OCCUR DUE TO FAILURE TO FAMILIARIZE WORKERS WITH THIS KNOWLEDGE.

**HVAC NOTES**

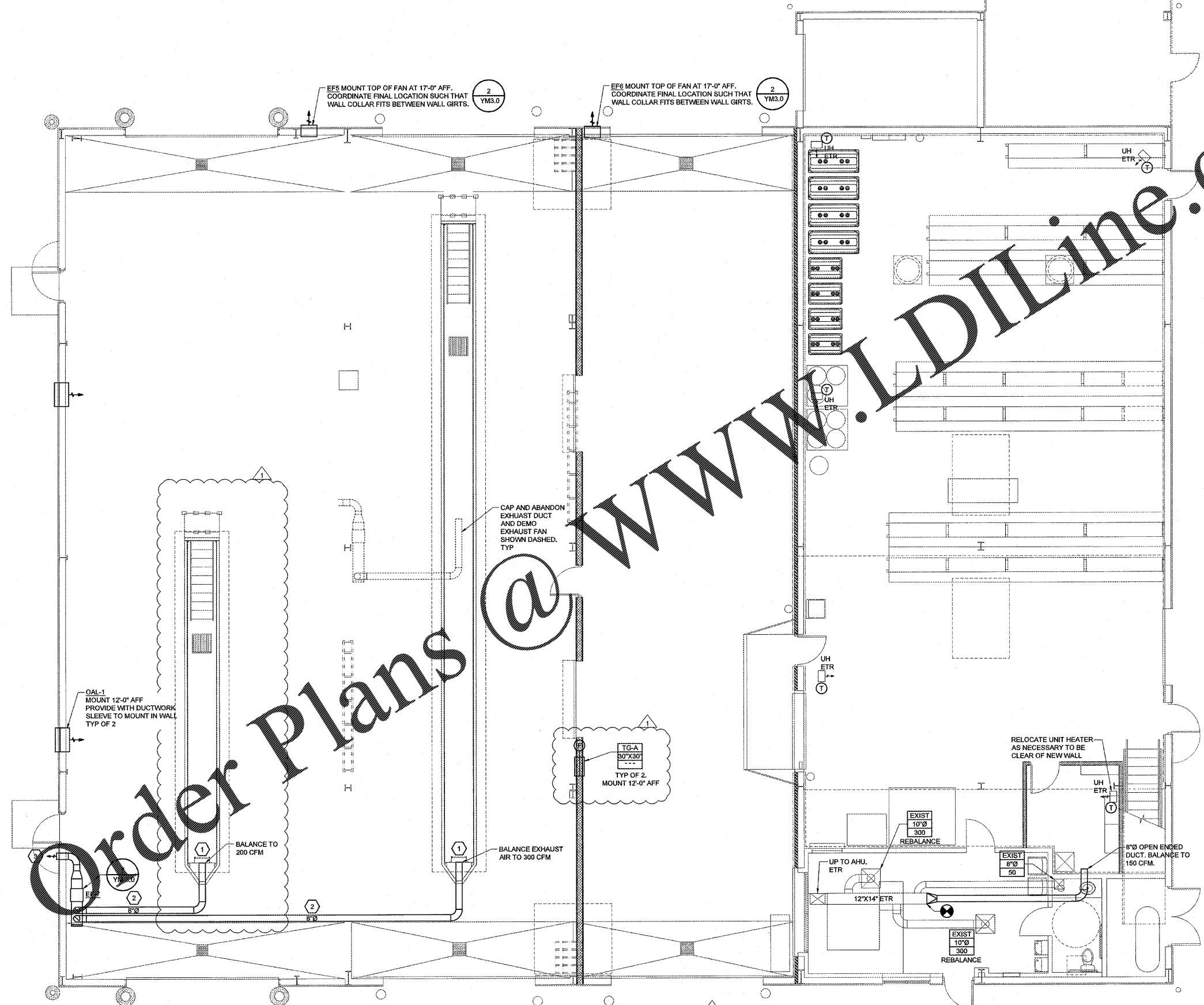
1. EACH CONTRACTOR IS RESPONSIBLE FOR HAVING THOROUGH KNOWLEDGE OF ALL DRAWINGS AND SPECIFICATIONS AS THEY RELATE TO THIS WORK. NO ADDITIONAL COMPENSATION SHALL BE ALLOWED DUE TO LACK OF THIS KNOWLEDGE.
2. PROVIDE ALL MATERIALS FOR A COMPLETE INSTALLATION IN ALL RESPECTS READY FOR INTENDED USE AND IN STRICT ACCORDANCE WITH STATE AND LOCAL CODES AND MANUFACTURER'S RECOMMENDATIONS.
3. VERIFY ALL EXISTING CONDITIONS PRIOR TO STARTING WORK. NOTIFY ARCHITECT/ENGINEER OF ANY CONFLICTS THAT MIGHT ARISE FROM FIELD CONDITIONS.

**KEYNOTES**

1. 8"Ø PVC VENT OUT WITH BOTTOM OF VENT 12" AFF. INSTALL EXHAUST GRILLE 1" IN LUBE PIT AREA. SEE AIR DEVICE SCHEDULE ON YM-3. LOCATE GRILLE FLUSH WITH WALL CENTERED ON PVC VENT.
2. PIT AREA VENTILATION SYSTEM DUCTWORK; PROVIDE AND INSTALL SCHEDULE 40 PVC ROUND DUCTWORK UNDERSLAB AS INDICATED. COORDINATE DUCTWORK WITH UNDERGROUND PIPING AND FOOTINGS. SLOPE DUCTWORK BACK TO LUBE.
3. HOODED WALL CAP FIELD PAINTED TO MATCH BUILDING EXTERIOR AT 10-FT ABOVE GRADE.

**MECHANICAL SYMBOLS**

	RECTANGULAR DUCT 18" WIDE BY 12" DEEP
	12" DIAMETER ROUND DUCT
	SUPPLY DUCT IN SECTION
	RETURN OR EXHAUST DUCT IN SECTION
	ELBOW WITH TURNING VANES
	ROUND (OR OVAL) ELBOW
	SUPPLY AIR DIFFUSER WITH ROUND SUPPLY DUCT
	RETURN OR EXHAUST AIR DIFFUSER WITH ROUND DUCT
	DIFFUSER OR GRILLE TYPE BRANCH DUCT & NECK SIZE CFM
	MANUAL BALANCE DAMPER
	THERMOSTAT
	REMOTE TEMPERATURE SENSOR
	HUMIDISTAT AND SENSOR
	ALARM ANNUNCIATOR
	DUCT SMOKE DETECTOR
	FIRE DAMPER WITH ACCESS DOOR



**1 MECHANICAL FLOOR PLAN**  
SCALE: 3/16"=1'-0"

**HFA ARCHITECTS ENGINEERS INTERIORS**  
HARRISON FRENCH & ASSOCIATES, LTD  
1705 S. Walton Blvd., Suite 3  
Bentonville, Arkansas 72712  
t 479.273.7780  
f 888.530.9685  
www.hfa-ae.com

STIPULATION FOR REUSE  
THESE DRAWINGS ARE PREPARED FOR THE PROJECT AND SITE SPECIFICALLY. ANY REUSE OF THESE DRAWINGS FOR ANY OTHER PROJECT WITHOUT THE WRITTEN PERMISSION OF HFA ARCHITECTS ENGINEERS INTERIORS IS STRICTLY PROHIBITED. ANY REUSE OF THESE DRAWINGS WITHOUT THE WRITTEN PERMISSION OF HFA ARCHITECTS ENGINEERS INTERIORS MAY BE SUBJECT TO LEGAL ACTION.

1127 TYSON RD  
HOPE HULL, AL 36043  
PROJECT NUMBER: 03-19-00718

**Loves**  
Travel Stop & Country Stores

ALABAMA LICENSED PROFESSIONAL ENGINEER  
No. 37862  
KENNETH L. CALVERT  
JUN 26 2019

ISSUE BLOCK

	06/24/19	ADD #1

STORE NO.	718
DOCUMENT DATE	04/11/19
CHECKED BY	JKR
DRAWN BY	PRC
PROTO CYCLE	

MECHANICAL FLOOR PLAN

SHEET: YM2.0

11/25/2019 8:40am User: rpkok d:\new\p\1127TYSON\19-00718-Loves-Hope-Hull-AL-1127TYSON\DWG\MEP\306\_YM2.0\_119.dwg