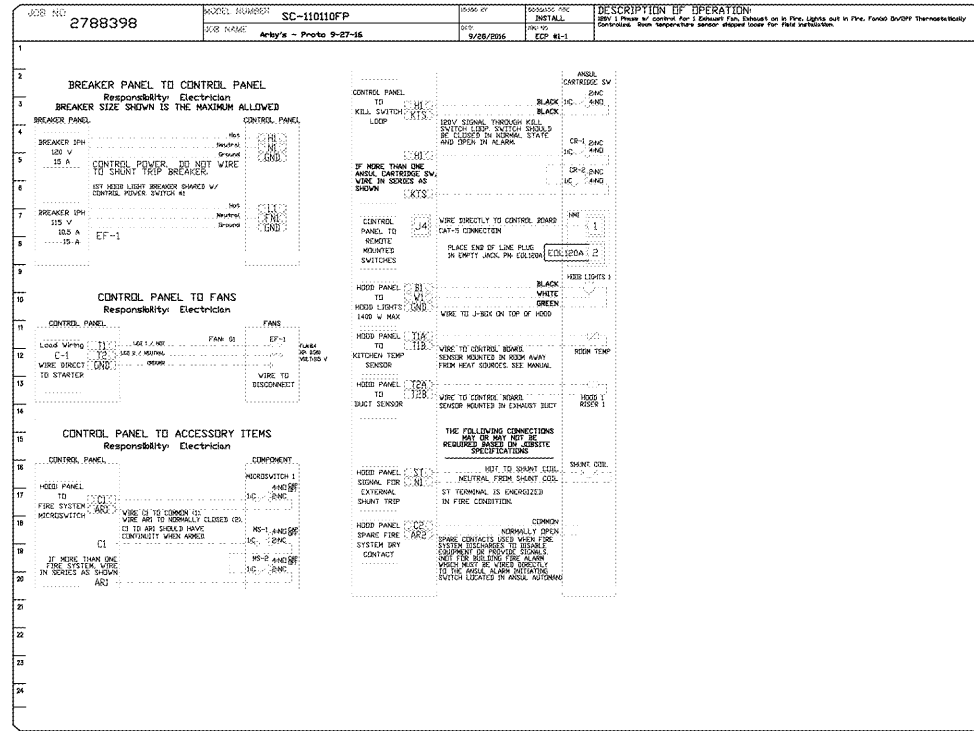


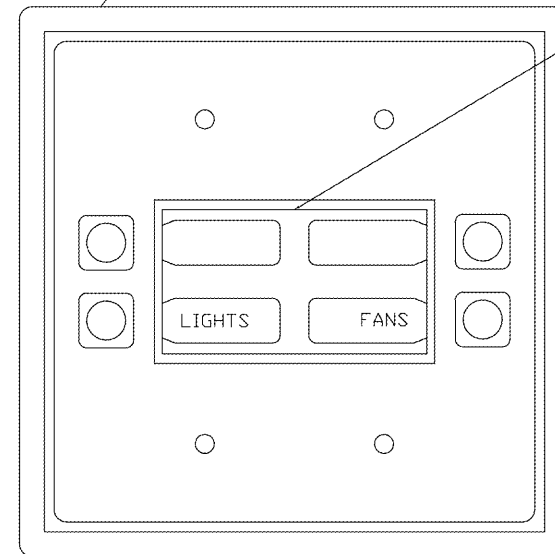
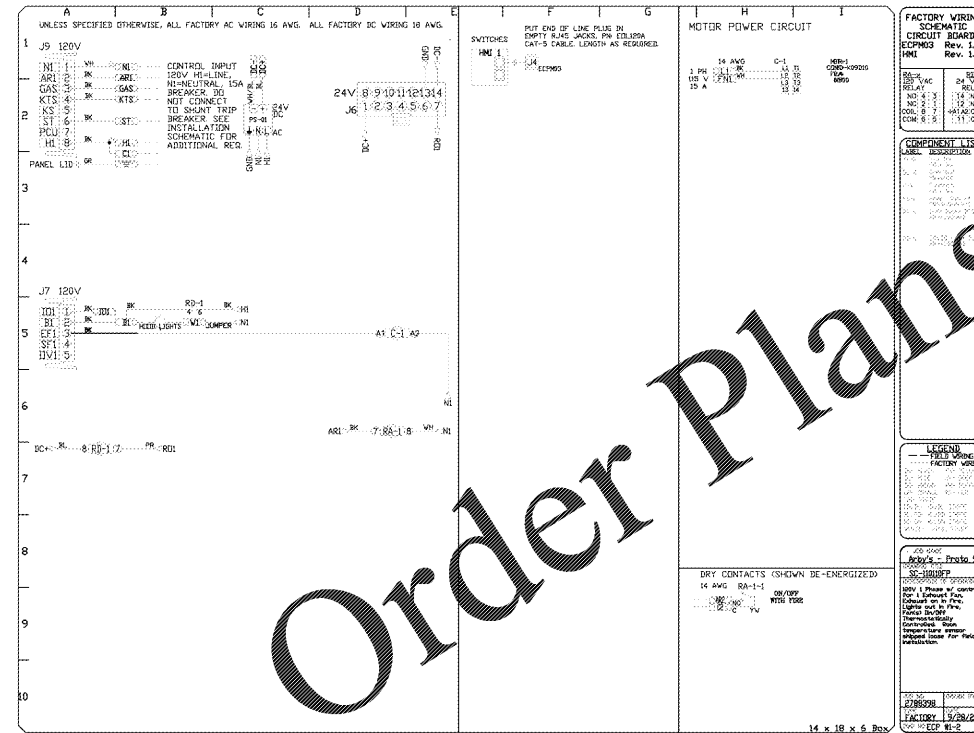
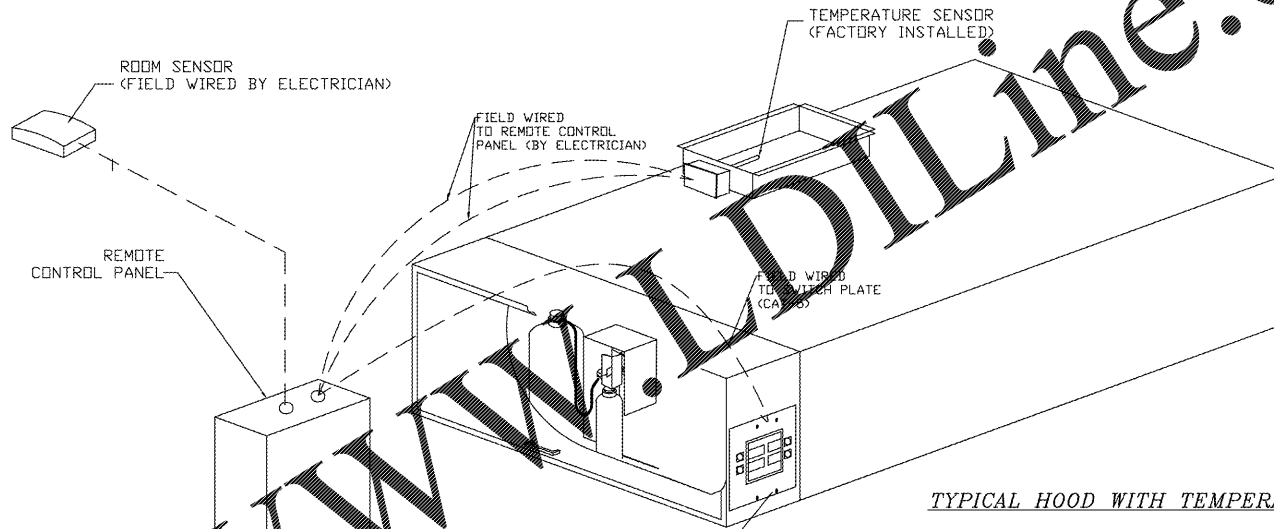
ELECTRICAL PACKAGES -- Job#2788398

NO.	TAG	PACKAGE #	LOCATION	SWITCHES		OPTION	FANS CONTROLLED					
				LOCATION	QUANTITY		FAN TAG	TYPE	#	H.P.	VOLT	FLA
1		SC-11011FP	Wall Mount In SS Box	Utility Cabinet Left	1 Light 1 Fan	Smart Controls Thermostatic Control	EF-1	Exhaust	1	0.500	115	6.4



TEMPERATURE SENSOR INTERLOCK

The Temperature Sensor Interlock option complies with IMC 2006 507.2.1.1 and NFPA 96 11.1.1 by interlocking with cooking appliances through means of a heat sensor to automatically activate exhaust fans during cooking operations.



Order Plans @ WWW.DILine.com

REVISIONS

NO.	DESCRIPTION	DATE
1		
2		
3		

Arby's - Proto 9-27-16

DATE: 9/28/2016
DWG.#: 2788398
DRAWN BY: WAH-50
SCALE: 3/4" = 1'-0"
MASTER DRAWING

SHEET NO.
3

Arby's RESTAURANT
 INSPIRE WORKSMART 2400
 2385 LEN PATTERSON RD
 FORT MILL, SC 29708
 FOR ARUNAH RESTAURANT GROUP, LLC
 40 SEMINGLE STREET, ASHEVILLE, NC 28803

PROJECT NUMBER: ARF149

DATE: 9/28/2016
OWNER REVIEW: AUG 7, 2016

SHEET: H1.3

CAPTIVE

Atlanta Office
 1305 S. Marietta Pkwy, Bldg 100, Ste 105, Marietta, GA 30067
 PHONE: (770) 892-8626 FAX: (770) 892-5984 EMAIL: reg50@captiveline.com

NOT FOR CONSTRUCTION, FOR REFERENCE ONLY

red

174 east long street
 suite 303
 columbus, ohio 43215
 tel: 614.687.8770
 fax: 614.687.8777

Arby's
 Copyright © 2016 by Arby's Restaurant Group