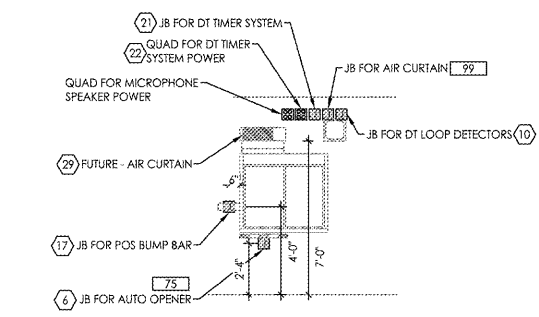
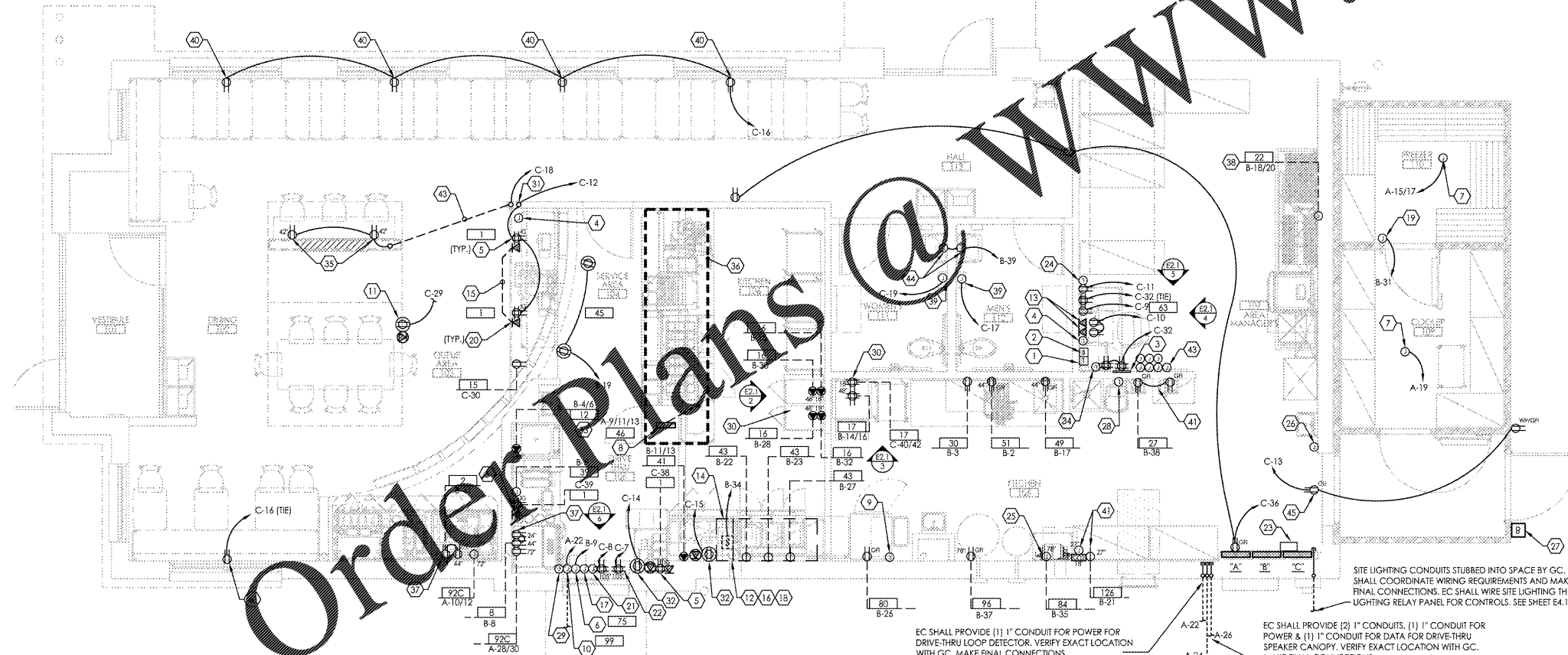
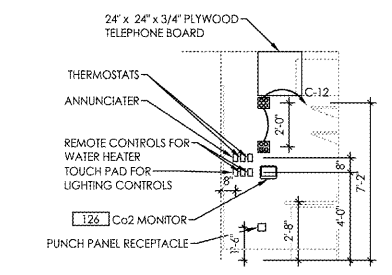


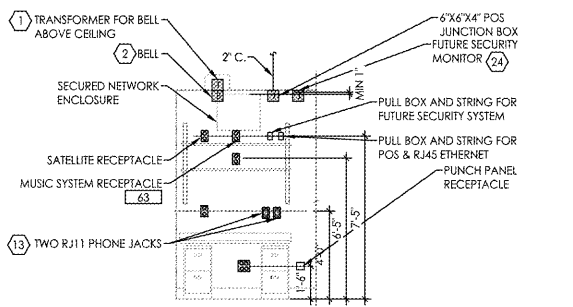
POWER PLAN - ELECTRICAL  
1/4" = 1'-0"



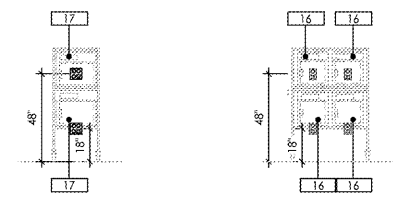
6 DRIVE THRU ELEVATION  
1/4" = 1'-0"



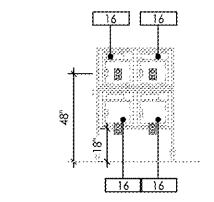
5 MANAGER'S DESK ELEVATION  
1/4" = 1'-0"



4 MANAGER'S DESK ELEVATION  
1/4" = 1'-0"



3 ELEVATION  
1/4" = 1'-0"



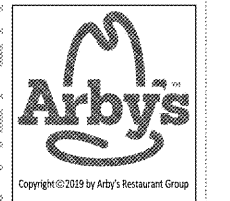
2 ELEVATION  
1/4" = 1'-0"

- GENERAL NOTES:**
- VERIFY POWER AND ROUGH-IN REQUIREMENTS WITH KITCHEN EQUIPMENT SUPPLIER PRIOR TO ROUGH-IN.
  - MAKE ALL CONNECTIONS AND PROVIDE ALL DEVICES TO PLACE EQUIPMENT IN OPERATION.
  - EC TO INSTALL MENU BOARD AND SPEAKER POST.
  - EC TO PROVIDE POWER TO SMOKE DETECTORS.
  - REFER TO THE APPROPRIATE DRAWINGS FOR THE EXACT LOCATION OF EQUIPMENT INSTALLED UNDER OTHER DIVISIONS OF THE DOCUMENTS WHICH REQUIRE ELECTRICAL SERVICE.
  - EC SHALL COORDINATE WITH OWNER FOR CABLES TO BE PULLED FOR CASH REGISTER AND MONITOR SYSTEM. EC SHALL INSTALL OWNER PROVIDED CABLES AS REQUIRED TO MAKE A COMPLETE AND WORKING SYSTEM.
  - REFER TO SHEET E3.1 FOR ROOF ELECTRIC PLAN.
  - ALL SINGLE PHASE 50A OR LESS, RATED 150V TO GROUND OR LESS, AND ALL THREE PHASE RECEPTACLES THAT ARE 150A OR LESS, RATED 150V TO GROUND OR LESS SHALL HAVE GFCI PROTECTION.
  - POS SYSTEM INSTALLER SHALL INSTALL CAT 6 CABLING FROM POS JB'S TO PUNCH PANEL IN MANAGERS OFFICE. INSTALL COVER PLATES AND LABELING AT BOTH ENDS OF ALL CABLE RUNS. COORDINATE WITH CM.
  - DINING AREA:** DUPLEX RECEPTACLES SHALL BE BROWN WITH STAINLESS STEEL COVER PLATES. **KITCHEN AREA:** DUPLEX RECEPTACLES SHALL BE WHITE WITH WHITE COVER PLATES.
  - VOLTAGE DROP:** THE PLANS DO NOT REFLECT SYSTEM VOLTAGES DROP, FEEDER CONDUCTORS SHALL BE SIZED FOR A MAXIMUM VOLTAGE DROP OF 2 PERCENT AT DESIGN LOAD, BRANCH CIRCUIT CONDUCTORS SHALL BE SIZED FOR A MAXIMUM VOLTAGE DROP OF 3 PERCENT AT DESIGN LOAD.

- CODED NOTES:**
- PROVIDE TRANSFORMER FOR BELL ABOVE CEILING. TRANSFORMER SHALL BE EDWARDS #99B.
  - PROVIDE BELL. BELL SHALL BE EDWARDS #17-4. PROVIDE ALL WIRING AND CONDUITS REQUIRED TO MAKE THE COMPLETE BELL SYSTEM. INSTALL BELL SYSTEM PER MANUFACTURER'S RECOMMENDATIONS.
  - TELEPHONE TERMINAL BOARD:** PROVIDE A 24" X 24" X 3/4" FIRE RETARDANT PLYWOOD BACKBOARD ABOVE PUNCH PANEL. MOUNT AS HIGH AS POSSIBLE ON WALL. COORDINATE WITH GC PRIOR TO ROUGH-IN. PROVIDE A #6 GROUND WIRE TO BLDG GROUND.
  - PROVIDE JB FOR POS SYSTEM. COORDINATE WITH POS INSTALLER PRIOR TO ROUGH IN. SEE SCHEMATIC THIS SHEET.
  - PROVIDE JB & DUPLEX RECEPTACLE FOR POS SYSTEM. COORDINATE WITH POS INSTALLER PRIOR TO ROUGH IN. SEE CONDUIT/CABLING SCHEMATIC, THIS SHEET FOR FURTHER INFORMATION.
  - PROVIDE JB UNDER DRIVE-THRU WINDOW FOR AUTO OPENER.
  - WALK IN EVAPORATOR PROVIDED BY KITCHEN EQUIPMENT SUPPLIER. MAKE FINAL CONNECTION TO MFR PROVIDED DISC SWITCH. PROVIDE FINAL CONNECTION TO WALK IN REMOTE CONDENSER ON ROOF. COORDINATE WITH SUPPLIER.
  - PROVIDE CONNECTION TO FOOD PRODUCTION COUNTER PANEL (PROVIDED BY FOOD PRODUCTION COUNTER MANUFACTURER). COORDINATE WITH FOOD PRODUCTION COUNTER WITH MANUFACTURER PRIOR TO ROUGH-IN. MAKE CONNECTION PER MANUFACTURER'S RECOMMENDATIONS. SEE OWNER RISER DIAGRAM SHEET E4.1.
  - PROVIDE JB ABOVE CEILING FOR SOLENOID VALVE (COORDINATE EXACT LOCATION WITH HOOD SUPPLIER PRIOR TO ROUGH IN). INSTALL SOLENOID VALVE TO HOOD SUPPRESSION SYSTEM/MASTER CONTROL PANEL AND NORMALLY OPEN SO THAT GAS APPLIANCES WILL NOT OPERATE WITHOUT HOOD EXHAUST IN USE.
  - PROVIDE DRIVE THRU LOOP DETECTORS AT THE MENU BOARD CANOPY AND OUTSIDE THE DRIVE THRU WINDOW. PROVIDE A 1" EMPTY CONDUIT WITH PULLSTRING FOR DRIVE THRU WINDOW LOOP THROUGH CURB, FOUNDATION AND FLOOR SLAB, AND UP THE DRIVE-THRU WINDOW WALL TO ABOVE THE FINISH CEILING. CONDUIT SHALL NOT BE EXPOSED TO THE EXTERIOR. COORDINATE WITH ARBY'S CM PRIOR TO ROUGH IN.
  - PROVIDE DUPLEX RECEPTACLE AND JB WITH PULL STRING AND (1) "8PBC" CONNECTOR ABOVE CEILING. SECURE TO LOBBY SIDE OF TRUSS ABOVE DECOR WALL FOR FUTURE WIR.
  - HOOD MASTER CONTROL PANEL (FURNISHED BY HOOD SUPPLIER/INSTALLED BY E.C.). EXTEND WIRING FROM CONTACTS AND CONNECT DEVICES UNDER HOOD TO SHUNT TRIP CIRCUIT BREAKERS. REFER TO HOOD CONTROL WIRING SCHEMATIC BY KEC FOR ADDITIONAL INFORMATION.
  - PROVIDE JB AND (2) 3/4" EMPTY CONDUITS WITH PULLSTRING TO ABOVE ACCESSIBLE CEILING FOR (2) "R11" PHONE JACKS (BY OTHERS).
  - START/STOP SWITCH WITH PILOT LIGHT (PROVIDED WITH HOOD) FOR HOOD EXHAUST FAN AND LIGHTING. MAKE FINAL CONNECTIONS AS REQUIRED.
  - ROUTE POS CABLES INSIDE CASEWORK. COORDINATE WITH ARBY'S CM BEFORE INSTALLATION.
  - ROUTE CIRCUIT FOR HOOD EXHAUST FAN (EF-1) THROUGH HOOD MASTER CONTROL PANEL FOR CONTROL. SEE ROOF POWER PLAN SHEET E3.1 FOR COORDINATION.
  - POS BUMP BAR: PROVIDE EMPTY 3/4" CONDUIT WITH PULL STRING FROM JB TO ABOVE CEILING. COORDINATE MOUNTING HEIGHT WITH ARBY'S CM PRIOR TO ROUGH IN.
  - HOOD MASTER CONTROL PANEL SHALL AUTOMATICALLY ACTIVATE EXHAUST FAN WHEN COOKING OPERATIONS OCCUR. REFER TO FF OPTION SENSOR INSTALLATION DETAIL BY KEC FOR ADDITIONAL INFORMATION. PROVIDE CONTROL WIRING REQUIRED FOR CONNECTION OF SENSOR TO CONTROL PANEL.
  - PROVIDE FINAL CONNECTION TO HEAT TRACE FURNISHED BY OTHERS.
  - PROVIDE JB FOR POS/DATA. LOCATE IN CASEWORK AT A MINIMUM 12" AFF. TRUY RELAY PHONE/TIMER FOR CONTROL.
  - DRIVE-THRU TIMER SYSTEM: PROVIDE JB AND 3/4" EMPTY CONDUIT WITH PULLSTRING TO ABOVE ACCESSIBLE CEILING. LOCATE BOTTOM OF JB AT 8'-0" AFF. SEE MANUFACTURER'S INSTRUCTIONS FOR DRIVE-THRU TIMER SYSTEM.
  - DEDICATED WITH ISOLATED GROUND FOR DRIVE-THRU TIMER SYSTEM POWER. LOCATE ABOVE DRIVE-THRU WINDOW. SEE MANUFACTURER'S INSTRUCTIONS FOR DRIVE-THRU TIMER SYSTEM. SEE SHEET A6.1 FOR ELEVATION.
  - CONTROL PANEL LOCATION FOR EXTERIOR SIGNAGE AND LIGHTING. SEE WIRING DIAGRAM SHEET E4.1.
  - PROVIDE JB FOR FUTURE SECURITY MONITOR.
  - JUNCTION BOX FOR BAG-IN-BOX: LOCATE 6" BELOW CEILING.
  - PROVIDE A 4" OCTAGON BOX AT 44" AFF. FOR ANSUL PULL STATION A MINIMUM OF 10'-0". NOT TO EXCEED 25'-0". FROM THE HOOD ON THE EXIT PATH. REFER TO DETAIL ON SHEET E4.1.
  - PROVIDE BELL PUSH BUTTON - EDWARDS #B-52. AT 44" AFF.
  - WATER HEATER CIRCULATION PUMP. COORDINATE FINAL LOCATION WITH PC PRIOR TO ROUGH IN. PROVIDE SIGNAGE AT CIRCULATION PUMP DISCONNECT TO STATE, "CONTROLLED BY CIRCULATION PUMP TIME CLOCK."
  - PROVIDE JB AND 3/4" EMPTY CONDUIT ABOVE CEILING FOR FUTURE AIR CURTAIN.
  - COORDINATE MOUNTING HEIGHT OF EQUIPMENT RECEPTACLES WITH OWNER REP IN FIELD PRIOR TO ROUGH IN.
  - PROVIDE EMPTY 2" CONDUIT WITH PULLSTRING FROM 4X4 JB TO ABOVE ACCESSIBLE CEILING FOR POS SYSTEM CABLES.
  - PROVIDE CEILING MOUNTED DUPLEX RECEPTACLE (IG) AND EMPTY JB FOR CEILING MOUNTED MONITOR. COORDINATE EXACT LOCATION IN THE FIELD PRIOR TO ROUGH-IN. POS INSTALLER SHALL PROVIDE MONITOR BRACKET. VERIFY WITH ARBY'S CM.
  - PROVIDE NEMA 6-20R RECEPTACLE AT 44" AFF.
  - PROVIDE JB FOR PHONE/DATA PUNCH PANEL LOCATED BELOW TTB.
  - EC SHALL PROVIDE USB CHARGER/TAMPER RESISTANT DUPLEX RECEPTACLE (#1R7740W ON TILE, #1R7740BK ON WOOD) MOUNT HORIZONTAL AT HEIGHT SHOWN WITH STAINLESS STEEL COVER PLATE.
  - ALL DEVICES LOCATED IN THIS AREA SHALL BE WIRED FROM PRODUCTION COUNTER PANEL.
  - RECEPTACLE FOR SODA EQUIPMENT. WIRE INTO SODA DISPENSER CIRCUIT AND MAKE FINAL CONNECTIONS.
  - PROVIDE JB AT 24" AND EMPTY 3/4" CONDUIT WITH PULLSTRING TO ABOVE CEILING FOR FUTURE DISHWASHER OPTION.
  - PROVIDE JB FOR 120V AUTOMATIC HAND DRYER. COORDINATE WITH PLUMBING CONTRACTOR AND MAKE FINAL CONNECTIONS.
  - PROVIDE WINDOW DUPLEX RECEPTACLE FLUSH WITH CEILING TILE ABOVE WINDOW. PROVIDE CEILING BOX AND COVER PLATE TO MATCH CEILING TILE. OUTLET BOX TO BE SUPPORTED OFF WALL OR FROM CEILING TILE AND GRID. INSTALL CONDUIT ABOVE CEILING AND ROUTE CIRCUIT THROUGH TIMECLOCK CONTROLLED CONTACTOR. REFER TO DETAIL ON SHEET E4.1.
  - C SHALL PROVIDE JUNCTION BOX WITH 3/4" EMPTY CONDUIT WITH PULLSTRING TO ABOVE ACCESSIBLE CEILING FOR HOT WATER HEATER CONTROLS. COORDINATE EXACT LOCATIONS OF JUNCTION BOX WITH PLUMBING CONTRACTOR PRIOR TO ROUGH-IN.
  - CO2 MONITORING SYSTEM:** EC SHALL PROVIDE CIRCUIT AND JUNCTION BOX FOR REMOTE SENSOR AT 18" AFF. LOCATED AT CO2 TANKS. EC SHALL PROVIDE JUNCTION BOX WITH 3/4" EMPTY CONDUIT WITH PULLSTRING TO ABOVE ACCESSIBLE CEILING FOR MONITORING CABLING. PROVIDE BACKBOX AT MANAGERS DESK FOR MONITORING DISPLAY. ALL SYSTEM CONTROL WIRING PROVIDED AND INSTALLED BY CO2 SYSTEMS INSTALLER. COORDINATE EXACT LOCATIONS OF DEVICES WITH CO2 SYSTEMS INSTALLER PRIOR TO ROUGH-IN. SEE SHEET E0.0 FOR DETAIL.
  - C SHALL RUN CONDUIT UNDER SLAB TO ISLAND, TRENCH AND BACKFILL PATCH TO MATCH. COORDINATE WITH OTHER TRADES PRIOR TO ROUGH-IN TO AVOID CONFLICTS.
  - PROVIDE JB FOR 120V INFRARED FAUCET SENSOR ABOVE CEILING. COORDINATE WITH PLUMBING CONTRACTOR AND MAKE FINAL CONNECTIONS.
  - EC SHALL MOUNT RECEPTACLE ABOVE DOOR FOR FLIGHT LIGHT. VERIFY EXACT LOCATION WITH OWNER PRIOR TO ROUGH-IN.

**red**  
architecture + planning  
174 east long street  
suite 300  
columbus, ohio 43215  
tel: 614.487.8770  
fax: 614.487.8777

**PROPRIETARY INFORMATION NOTICE:**  
THESE PROTOTYPICAL DOCUMENTS MAY REQUIRE REVISIONS TO CONFORM TO LOCAL, STATE, AND FEDERAL CODES, ORDINANCES OR OTHER CONDITIONS. THE DESIGN CONCEPTS SHOWN IN THESE DOCUMENTS ARE SPECIFICALLY FOR THIS PROJECT. INFORMATION CONTAINED HEREIN REMAINS THE SOLE PROPERTY OF ARBY'S RESTAURANT GROUP. IS CONFIDENTIAL AND PROPRIETARY AND IS NOT TO BE COPIED, REPRODUCED, DISCLOSED OR OTHERWISE TRANSFERRED TO OTHER PARTIES IN ANY FORM WHATSOEVER WITHOUT THE EXPRESS WRITTEN CONSENT OF ARBY'S RESTAURANT GROUP.



**ARBY'S RESTAURANT**  
INSPIRE WORKSMART 2400  
2385 LEN PATTERSON RD  
FORT MILL, SC 29708  
FOR  
BRUMMIT RESTAURANT GROUP, LLC  
40 SEMINOLE STREET, ASHEVILLE, NC 28803

PROJECT NUMBER: ARF149	
ISSUE	DATE
OWNER REVIEW	AUG 7, 2019

POWER PLAN  
ELECTRICAL

SHEET:  
**E2.1**

NOT FOR CONSTRUCTION FOR REFERENCE ONLY

WWW.LDILLING.COM