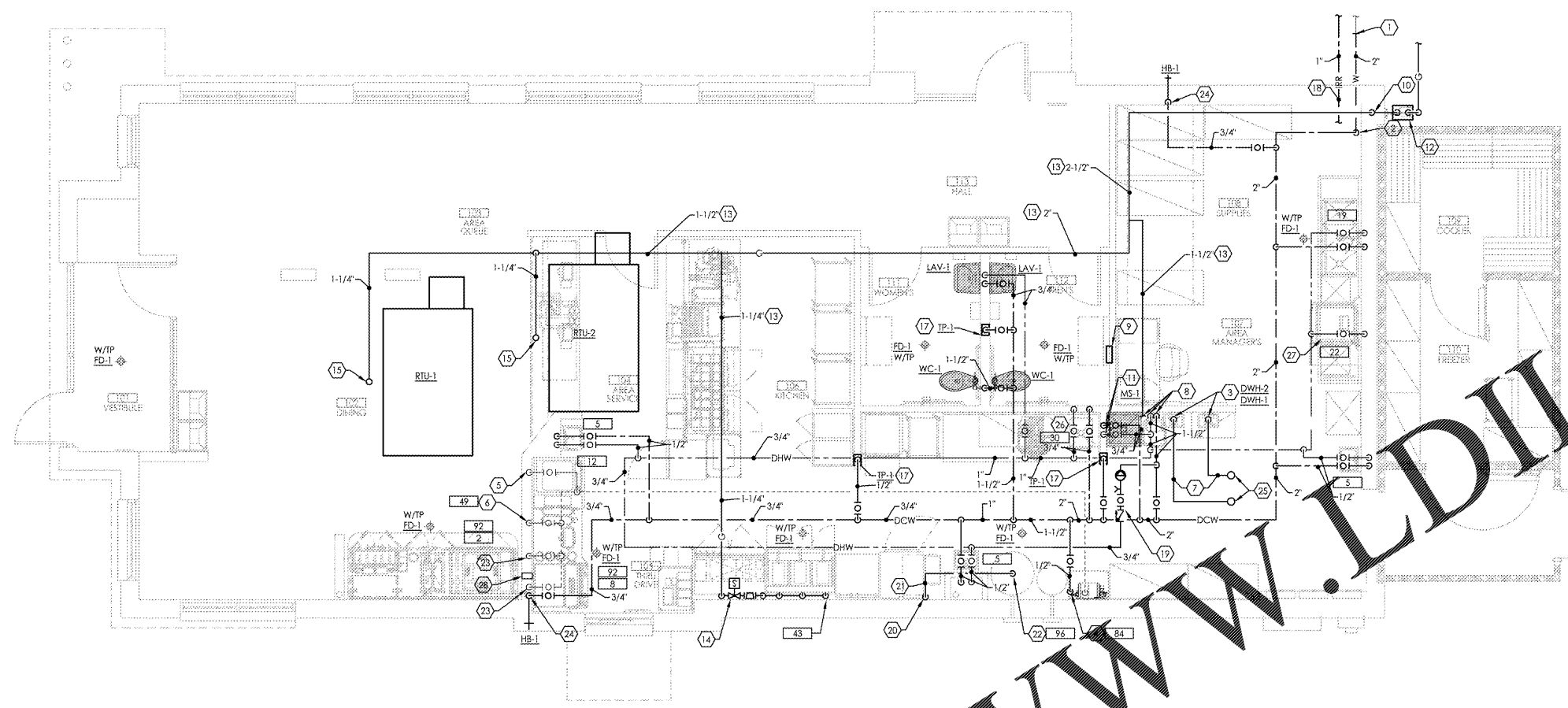


GENERAL NOTES:

- PLUMBING CONTRACTOR SHALL PROVIDE ALTERNATE BID FOR SURE SEAL TRAP GUARD OR EQUIVALENT TRAP GUARD AS OPPOSED TO TRAP PRIMERS IF LOCAL CODE PERMITS THE USE OF TRAP GUARDS.
- PLUMBING CONTRACTOR SHALL PROVIDE ALTERNATE BID FOR ZURN PEX TUBING SYSTEM ON THE DOMESTIC WATER SYSTEM INCLUDING ALL THE FITTINGS, MANIFOLDS, REGULATORS, SUPPORTS, ETC. SEE PLUMBING SPECIFICATIONS FOR PEX TUBING SYSTEM SPECIFICATIONS.
- REFER TO SCHEDULE ON SHEET P5.1 AND RISER DIAGRAMS FOR COMPLETE PIPE SIZING INFORMATION.
- ROUTE PIPING UP IN TRUSS SPACE WHERE CEILING SPACE IS LIMITED.
- TRAP PRIMER/VALVES TO BE IN AN ACCESSIBLE SPACE ABOVE CEILING, IF NOT PROVIDE A MINIMUM 12"x12" ACCESS PANEL, OR LARGER IF REQUIRED TO ADEQUATELY ACCESS THE TRAP PRIMER/VALVES. REFER TO DETAIL ON SHEET P4.1.
- ALL PIPING AND ASSOCIATED PLUMBING EQUIPMENT FOR SODA SYSTEM SHALL BE INSTALLED BY A STATE LICENSED PLUMBING CONTRACTOR.
- ALL GAS PIPING IN CONCEALED AREAS SHALL BE WELDED.

CODED NOTES:

- CONNECT 2" WATER LINE TO SITE UTILITY. PROVIDE WATER SERVICE LINE 5'-0" OUTSIDE BUILDING WALL AND END INTO BUILDING. COORDINATE EXACT LOCATION AND POINT-OF-CONNECTION WITH SITE UTILITY CONTRACTOR AND ARBY'S CONSTRUCTION MANAGER.
- PROVIDE WATER UP THROUGH FLOOR TO CEILING SPACE. PROVIDE ISOLATION VALVE ON WATER LINE IN SPACE.
PROVIDE WATER HEATERS ON FACE OF WALL. REFER TO DETAIL ON SHEET P4.1.
- PROVIDE 1/2" DCW WITH BALL SHUT OFF VALVE AND ASSE 1022 LISTED BFP 6" BELOW CEILING TO WATER FILTER SYSTEM (84). COORDINATE EXACT REQUIREMENTS WITH PEPSI VENDOR. REFER TO WATER FILTER SYSTEM DETAIL ON SHEET P4.1.
- CONNECT TO PEPSI PROVIDED FILTERED WATER LINE ABOVE CEILING AND PROVIDED 1/2" FW DROP IN WALL TO 21" AFF FOR SHAKE MACHINE (12). PROVIDE BALL STOP VALVE, ASSE 1022 LISTED BFP AND FINAL CONNECTION TO EQUIPMENT. COORDINATE EXACT REQUIREMENTS WITH PEPSI VENDOR.
- CONNECT TO PEPSI PROVIDED FILTERED WATER LINE ABOVE CEILING AND PROVIDE 1/2" FW DROP DOWN IN WALL AND UNDER COUNTERTOP TO 4" AFF FOR COFFEE MAKER (49). PROVIDE BALL SHUTOFF VALVE, ASSE 1022 LISTED BFP AND FINAL CONNECTION TO EQUIPMENT. COORDINATE EXACT REQUIREMENTS WITH PEPSI VENDOR.
- PROVIDE WATER HEATER CONCENTRIC INTAKE AIR AND FLUE VENT PIPING THROUGH ROOF PER DETAIL ON SHEET P4.2.
- PROVIDE DCW, DHW, DHWR, AND GAS PIPING ROUTED TO WATER HEATERS. REFER TO WATER HEATER DETAIL ON SHEET P4.1.
- PROVIDE DWH-1 AND DWH-2 REMOTE CONTROLS (STACKED). PC TO COORDINATE THIS WORK WITH EC.
- ROUTE GAS PIPING INTO BUILDING AND RISE IN WALL CAVITY TO ABOVE CEILING WITHIN TRUSS SPACE. PROVIDE WATERTIGHT SEAL AT WALL PENETRATION. PAINT EXTERIOR PIPING TO MATCH EXTERIOR WALL FINISHES. COORDINATE COLOR WITH CONSTRUCTION MANAGER AND ARCHITECT.
- PROVIDE 3/4" DCW and 3/4" DHW DOWN IN WALL TO MOP SINK.
- PROVIDE GAS METER AND SERVICE ENTRANCE. REFER TO DETAIL ON SHEET P4.1. PC SHALL COORDINATE NEW GAS SERVICE AND METER WITH LOCAL NATURAL GAS AUTHORITY. TOTAL GAS LOAD: 955 CFH; DELIVERY PRESSURE: 7" WC; TOTAL EQUIVALENT LENGTH OF PIPE: 125 FEET.
- GAS PIPING ROUTED ABOVE CEILING WITHIN TRUSS SPACE.
- PROVIDE 1-1/2" GAS PIPING DOWN THROUGH CEILING TO MECHANICAL GAS SHUT-OFF VALVE. MECHANICAL GAS SHUT-OFF VALVE FURNISHED BY HOOD MANUFACTURER AND INSTALLED BY THE PC. MANUAL SHUT-OFF VALVE PROVIDED BY PC. INSTALL MECHANICAL VALVE AND MANUAL VALVE BELOW CEILING. REFER TO GAS RISER DIAGRAM ON THIS SHEET AND DETAIL ON SHEET P4.2.
- PROVIDE GAS PIPING UP THROUGH ROOF AND CONNECT TO HVAC EQUIPMENT. REFER TO ROOF PENETRATION DETAIL ON SHEET P4.2. REFER TO SHEET P4.2 FOR CONNECTION DETAIL.
- NOT USED.
- PROVIDE TRAP PRIMER. REFER TO DETAIL ON SHEET P4.1.
- IF IRRIGATION SYSTEM IS REQUIRED. PROVIDE 1" TAP, METER AND ASSE 1013 BACKFLOW ASSEMBLY INSIDE BUILDING FOR IRRIGATION SYSTEM. DO NOT PROVIDE IF NOT REQUIRED. CONTRACTOR TO VERIFY REQUIREMENTS WITH CONSTRUCTION MANAGER AND LOCAL CODE AUTHORITY.
- PROVIDE CHECK VALVE, BALL VALVE AND PETES PLUGS ABOVE CEILING IN DHWR PIPING.
- PC SHALL ROUTE 3/4" GALVANIZED USED FRYER GREASE PIPING DOWN ON WALL AND HORIZONTALLY TO THE FRYERS PER MANUFACTURERS RECOMMENDATIONS. SECURE INLET PIPE TO WALL WITH STANDOFF BRACKETS AND PIPE COVER. REFER TO PIPE COVER DETAIL ON SHEET P4.1. REFER TO NOTE 22 AND 23 FOR COORDINATION.
- USED FRYER GREASE PIPING ROUTED ABOVE CEILING. INSTALL PIPE PER MANUFACTURERS RECOMMENDATIONS WITH 1/8" MIN SLOPE TO ALLOW FOR RESIDUAL GREASE TO DRAIN INTO STORAGE TANK WHEN THE SYSTEM IS NOT IN USE.
- USED FRYER GREASE HOLDING TANK (56) BY KITCHEN EQUIPMENT SUPPLIER.
- CONNECT TO PEPSI PROVIDED FILTERED WATER LINE ABOVE CEILING AND PROVIDE 1/2" FW DROP TO B4" AFF TO ICE MAKER (22) WITH WHIP CONNECTOR FURNISHED BY PEPSI VENDOR. PROVIDE BALL SHUTOFF VALVE, ASSE 1022 LISTED BFP AND FINAL CONNECTION TO EQUIPMENT. COORDINATE EXACT REQUIREMENTS WITH PEPSI VENDOR.
- PROVIDE 3/4" DCW DOWN IN WALL TO EXTERIOR WALL HYDRANT. PIPE INSULATION TO RIN CONTINUOUSLY WITHIN WALL STRUCTURE. COORDINATE MOUNTING HEIGHT OF WALL HYDRANT WITH ARCHITECT AND ARBY'S CONSTRUCTION MANAGER.
- INSTALL VERTICAL CONCENTRIC ROOF TERMINATION KIT FURNISHED BY WATER HEATER MANUFACTURER. REFER TO DETAIL ON SHEET P4.2.
- PROVIDE 1/2" DCW AND 1/2" DHW ROUTED DOWN IN WALL TO SERVE PREP SINK (30).
- PROVIDE 1/2" VALVED DHW DOWN IN WALL TO DISHWASHER (22) AND CONNECT. PROVIDE ASSE 1013 BACKFLOW PREVENTER ON DHW LINE IN AN ACCESSIBLE LOCATION. PROVIDE DRAIN LINE FROM BACKFLOW PREVENTER TO NEAREST DRAIN. COORDINATE EXACT LOCATION OF DRAIN WITH CONSTRUCTION MANAGER.
- PROVIDE 4" CONDUIT IN WALL BETWEEN SODA DISPENSERS FOR SODA CONDUIT. PROVIDE 6x6 CUT OUT HOLE UNDER DRIVE THROUGH COUNTER TO CONNECT SODA LINES.



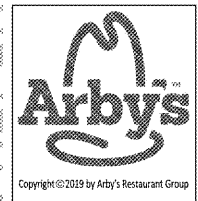
1 WATER AND GAS PLAN - PLUMBING
1/4" = 1'-0"

Order Plans @

WWW.LDILINE.COM

red
architecture + planning
174 east long street
suite 300
columbus, ohio 43215
tel: 614.487.8770
fax: 614.487.8777

PROPRIETARY INFORMATION NOTICE:
THESE PROTOTYPICAL DOCUMENTS MAY REQUIRE REVISIONS TO CONFORM TO LOCAL, STATE, AND FEDERAL CODES, ORDINANCES OR OTHER CONDITIONS. THE DESIGN CONCEPTS EMBODIED IN THESE DOCUMENTS ARE SPECIFICALLY FOR THIS PROJECT. INFORMATION CONTAINED HEREIN REMAINS THE SOLE PROPERTY OF ARBY'S RESTAURANT GROUP. IT IS CONFIDENTIAL AND PROPRIETARY AND IS NOT TO BE COPIED, REPRODUCED, DISCLOSED OR OTHERWISE TRANSFERRED TO OTHER PARTIES IN ANY FORM WHATSOEVER WITHOUT THE EXPRESS WRITTEN CONSENT OF ARBY'S RESTAURANT GROUP.



ARBY'S RESTAURANT
INSPIRE WORKSMART 2400
2385 LEN PATTERSON RD
FORT MILL, SC 29708
FOR
BRUMIT RESTAURANT GROUP, LLC
40 SEMINOLE STREET, ASHEVILLE, NC 28803

PROJECT NUMBER: ARF149	
ISSUE	DATE
OWNER REVIEW	AUG 7, 2019

WATER AND GAS PLAN
PLUMBING

SHEET:
P2.1

NOT FOR CONSTRUCTION, FOR REFERENCE ONLY