

TRIM PACKAGE

CHAIR RAIL:

FURNISHED BY CMI **INSTALLED BY** G.C.

DESCRIPTION: 3/4" X 3" WOOD - OAK STAINED (S2)
FINISH: STAINED TO MATCH PIONITE WW011 'KINGSLEY'

ACCENT TRIM:

FURNISHED BY CMI **INSTALLED BY** G.C.

DESCRIPTION: 3/4" X 2" WOOD - OAK STAINED (S1)
FINISH: STAINED TO MATCH PIONITE WW011 'KINGSLEY'

TOP CAP:

FURNISHED BY CMI **INSTALLED BY** G.C.

DESCRIPTION: 1" X 9 1/2" WOOD - OAK STAINED (S1)
FINISH: STAINED TO MATCH PIONITE WW011 'KINGSLEY'

SHOE MOULD:

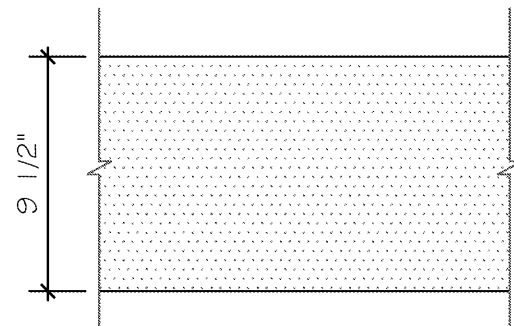
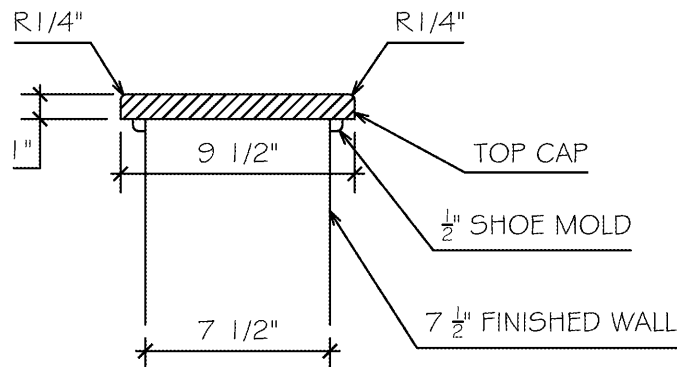
FURNISHED BY CMI **INSTALLED BY** G.C.

DESCRIPTION: 3/8" X 1/2" OAK SHOE MOULDING (S1)
FINISH: STAINED TO MATCH PIONITE WW011 'KINGSLEY'

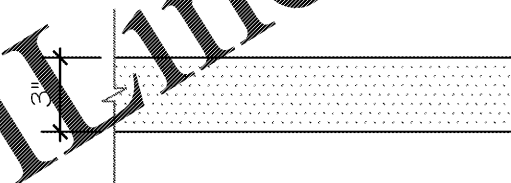
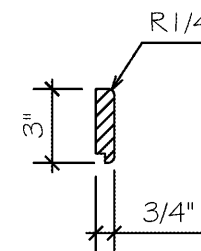
SCHLUTER STRIP:

FURNISHED BY G.C. **INSTALLED BY** G.C.

DESCRIPTION: SCHLUTER STRIP OUTSIDE CORNER QUADREC Q 125 AE OR Q100
FINISH: SATIN ANODIZED ALUMINUM
NOTE: CONTACT: JASON WEEKS
G.C. TO CHOOSE SCHLUTER DEPENDING ON TILE THICKNESS 678-687-7802

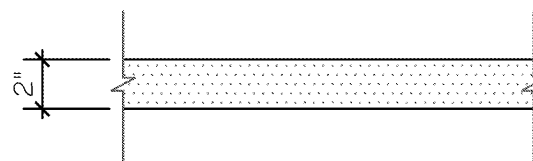
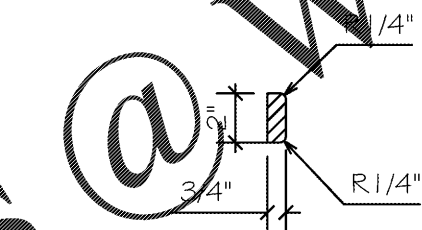


S-1
1" x 9-1/2" OAK WALLCAP

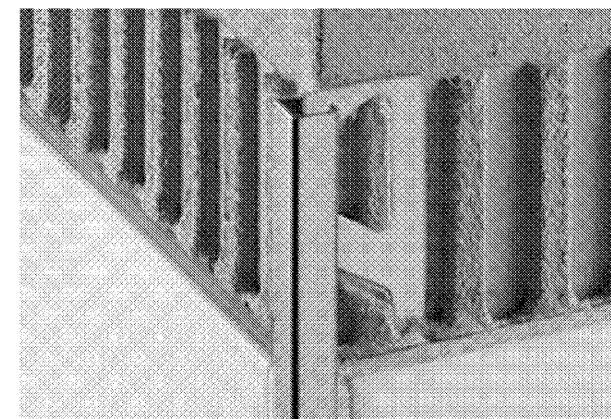


S-2
3/4" x 3" OAK CHAIR RAIL

FOR SERVICE COUNTER DETAIL REFER TO ARCHITECTURAL PLANS OR "KES" SHOP DRAWINGS.



S-1
3/4" x 2" OAK ACCENT TRIM



INSTALL QUESTIONS REFER TO:
WWW.YOUTUBE.COM/WATCH?V=KPO0MDPEGEO

G.C. TO CHOOSE THE CORRECT SCHLUTER CORNER BASED ON TILE THICKNESS

CONTACT:
JASON WEEKS @ 678-687-7802

SCHLUTER QUADREC Q-125 AE (1/2") OR
SCHLUTER QUADREC Q-100 AE (3/8")

STORE No.: 8688

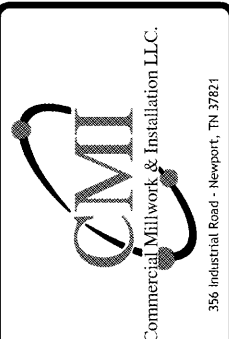
REVISION

REVISION	DATE	BY

SHEET TITLE: DETAILS
SCALE: 1-1/2" = 1'-0"
ADDRESS: 2385 Len Patterson Road
Fort Mill, SC



ACCOUNT: Arby's
DESIGN BY: Henry
DATE: 8/6/19
PROJECT NO.: D1_60831
REVISION: 00 SHEET NO.: 11



CITY, ST Fort Mill, SC