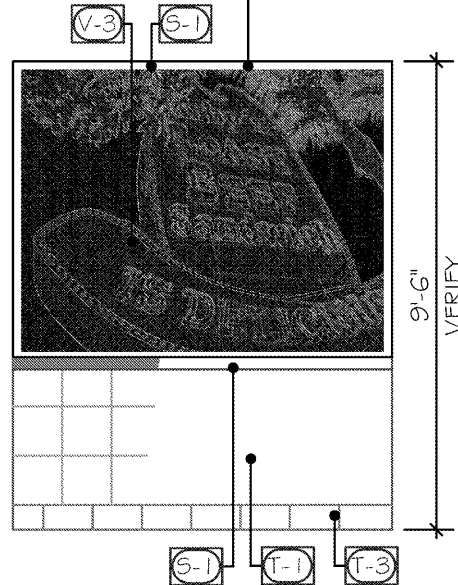
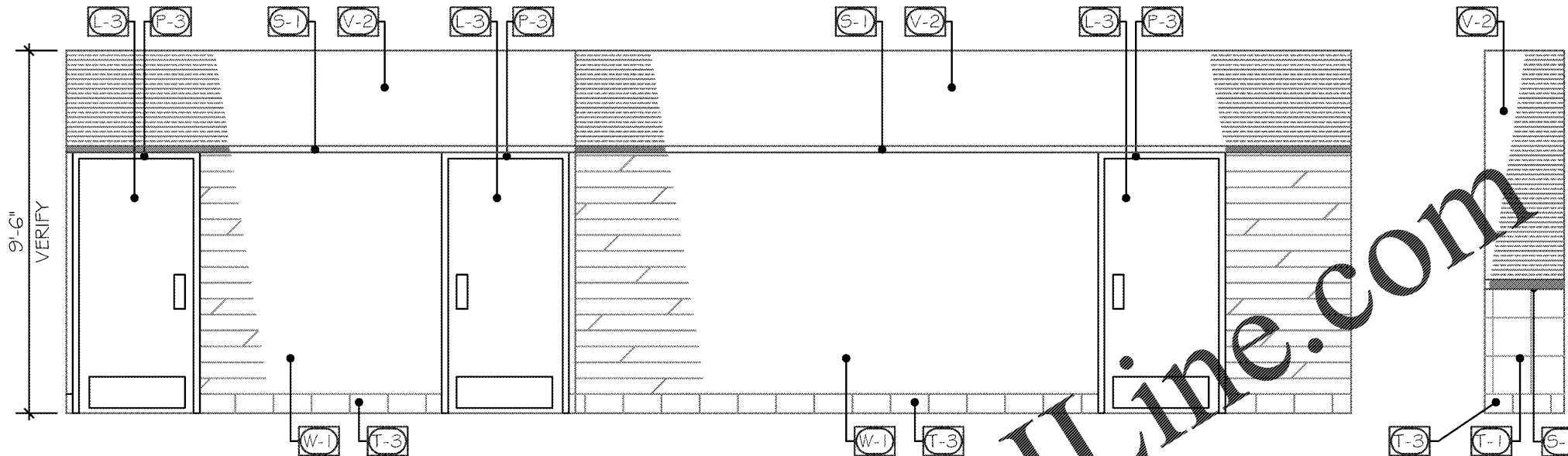


GRAPHIC & TRIM TO GO ON DRYWALL TRIM BY SEATING VENDOR



NOTE: TILED WALLS TO RECEIVE BRUSHED ALUMINUM SCHLUTE CORNER GUARD ON ALL OUTSIDE CORNERS.

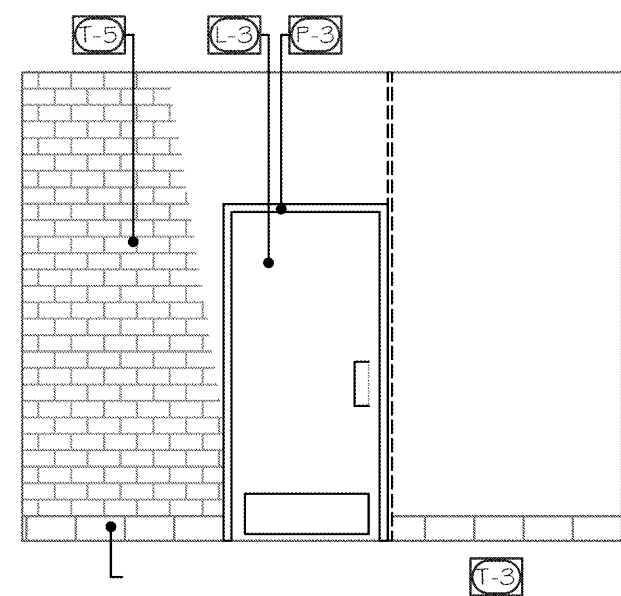
ELEVATION E



ELEVATION F

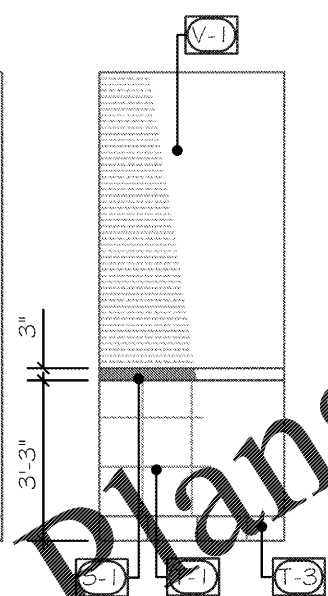
NOTE: ALL FILL PATTERNS SHOWN ON THE DRAWINGS/ELEVATIONS ARE ONLY TO HELP SHOW DESIGN INTENT. THEY DO NOT REPRESENT THE TRUE INSTALL PATTERN.

ELEVATION N



NOTE: TILED WALLS TO RECEIVE BRUSHED ALUMINUM SCHLUTE CORNER GUARD ON ALL OUTSIDE CORNERS.

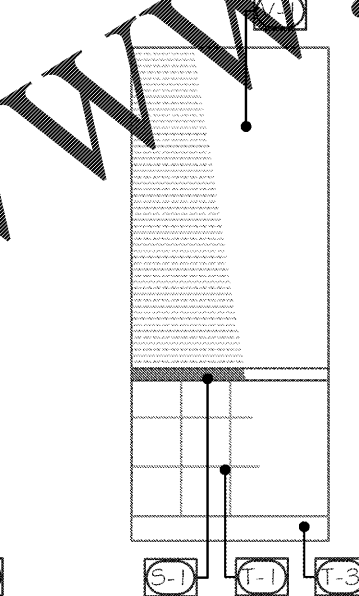
ELEVATION G



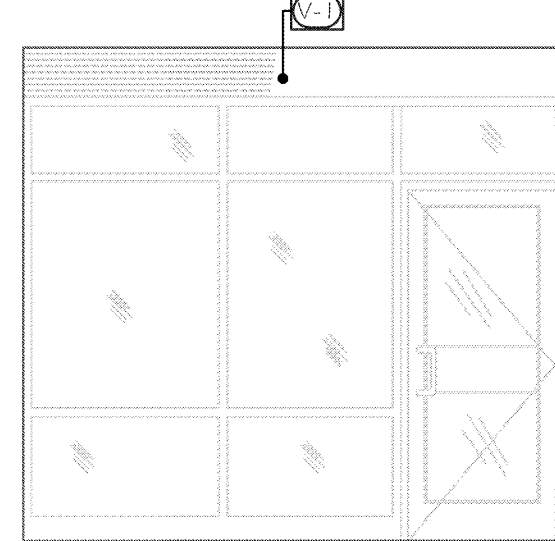
ELEVATION H



ELEVATION J

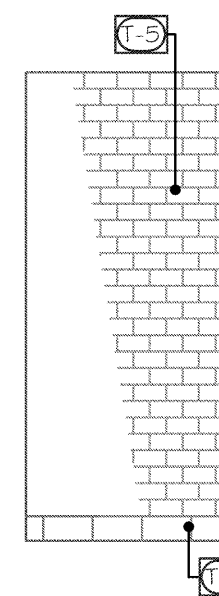


ELEVATION K



ELEVATION L

NOTE: ALL FILL PATTERNS SHOWN ON THE DRAWINGS/ELEVATIONS ARE ONLY TO HELP SHOW DESIGN INTENT. THEY DO NOT REPRESENT THE TRUE INSTALL PATTERN.



ELEVATION M

UNLESS OTHERWISE SPECIFIED

- F1** SHERWIN WILLIAMS COLOR: SW7038 'TONY TAUN'
- F2** SHERWIN WILLIAMS COLOR: SW6864 'CHERRY TOMATO'
- F3** SHERWIN WILLIAMS COLOR: SW6083 'SABLE GLOSS'
- F4** SHERWIN WILLIAMS COLOR: SW7005 'PURE WHITE'

- L1** LAMINATE: PIONITE WW011 SUEDE 'KINGSLEY'
- L2** LAMINATE: PIONITE WX110 SUEDE 'SMOOTH PADDLIN'
- L3** FORMICA 5884-58 'CHESTNUT WOODLINE'
- C1** CORIAN 'ARCTIC ICE'

- V1** WOLF GORDON 'BAMBOO PLATINUM' G9061644
- V2** KOROSEAL 'POSEIDEN Z521-66' VOLTE
- V3** APA GRAPHICS CUSTOM 'CHALKBOARD VINTAGE ARBYS'
- V5** WOLF GORDON G9061643 STRINGS PITCH BLACK

- T1** CROSSVILLE TILE- 12x12 SCG1 URBAN
- T2** CROSSVILLE TILE 6x24 SWG8 LAKEWOOD
- T3** CROSSVILLE TILE- COVE BASE 6x12 SCG1 URBAN
- T5** CROSSVILLE TILE 4x8 COLOR BY NUMBERS WT02 'TEA FOR TWO' GLOSS

- T6** CROSSVILLE TILE 4x8 COLOR BY NUMBERS WT14 'CARBON-14' GLOSS
- W1** SOLID WOOD WALL BOARDS APA GRAPHICS 96" x 6" PLANKS
- S1** OAK ACCENT TRIM STAINED TO MATCH PIONITE WW011 'KINGSLEY' (L1)
- S2** CHAIR RAIL STAINED TO MATCH PIONITE WW011 'KINGSLEY' (L1)

STORE No.: 8688

CITY, ST

Fort Mill, SC

REVISION	DATE	BY

SHEET TITLE: ELEVATIONS  
SCALE: 1/4" = 1'-0"  
ADDRESS: 2385 Len Patterson Road  
Fort Mill, SC

ACCOUNT: Arby's  
DESIGN BY: Henry  
DATE: 8/6/19  
PROJECT NO.: E4.60831  
REVISION: 00 SHEET NO.: 8