

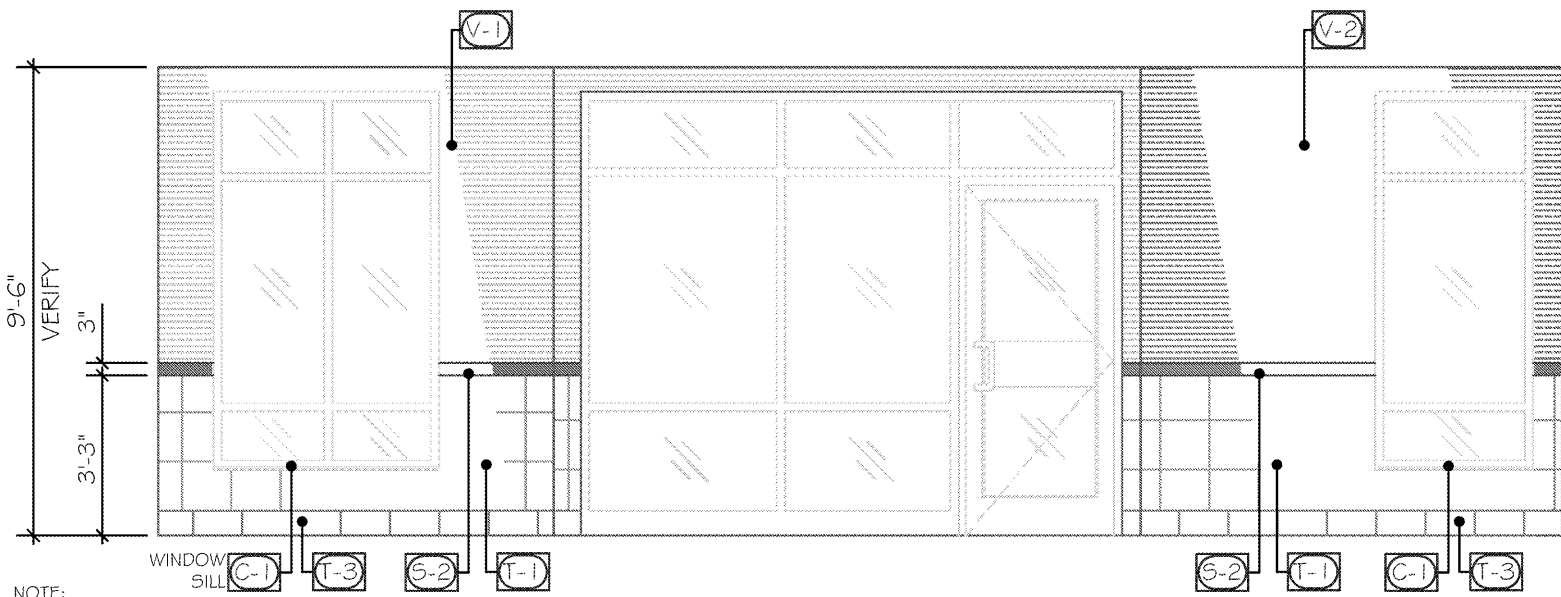
STORE No.: **8688**

REVISION	DATE	BY

SHEET TITLE:	ELEVATIONS
SCALE:	1/4" = 1'-0"
ADDRESS:	2385 Len Patterson Road Fort Mill, SC

ACCOUNT:	Arby's
DESIGN BY:	Henry
DATE:	8/6/19
PROJECT NO.:	E3 60831
REVISION:	00
SHEET NO.:	7

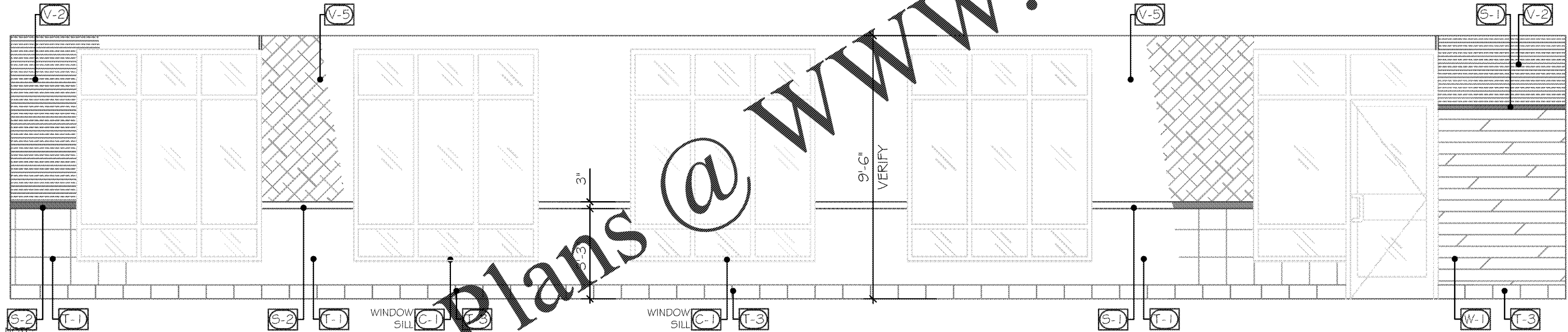
CITY, ST **Fort Mill, SC**



NOTE:
TILED WALLS TO RECEIVE BRUSHED ALUMINUM SCHLUTE
CORNER GUARD ON ALL OUTSIDE CORNERS.

ELEVATION C

NOTE:
ALL FILL PATTERNS SHOWN ON THE DRAWINGS/ELEVATIONS
ARE ONLY TO HELP SHOW DESIGN INTENT.
THEY DO NOT REPRESENT THE TRUE INSTALL PATTERN.



NOTE:
TILED WALLS TO RECEIVE BRUSHED ALUMINUM SCHLUTE
CORNER GUARD ON ALL OUTSIDE CORNERS.

ELEVATION D

NOTE:
ALL FILL PATTERNS SHOWN ON THE DRAWINGS/ELEVATIONS
ARE ONLY TO HELP SHOW DESIGN INTENT.
THEY DO NOT REPRESENT THE TRUE INSTALL PATTERN.

UNLESS OTHERWISE SPECIFIED

- P1** SHERWIN WILLIAMS
COLOR: SW7038 'TONY TAUP'.
- P2** SHERWIN WILLIAMS
COLOR: SW6864 'CHERRY TOMATO'
- P3** SHERWIN WILLIAMS
COLOR: SW6083 'SABLE GLOSS'
- P4** SHERWIN WILLIAMS
COLOR: SW7005 'PURE WHITE'

- L1** LAMINATE: PIONITE WW011 SUEDE
'KINGSLEY'
- L2** LAMINATE: PIONITE WX110 SUEDE '
SMOOTH PADDLIN'
- L3** FORMICA 5884-58
'CHESTNUT WOODLINE'
- C1** CORIAN 'ARCTIC ICE'

- V1** WOLF GORDON
'BAMBOO PLATINUM' G9061644
- V2** KOROSEAL
'POSEIDEN Z521-66' VOLTE
- V3** APA GRAPHICS
CUSTOM 'CHALKBOARD VINTAGE
ARBYS'
- V5** WOLF GORDON
G9061643 STRINGS PITCH BLACK

- T1** CROSSVILLE TILE- 12x12
SCG1 URBAN
- T2** CROSSVILLE TILE 6x24
SWG8 LAKEWOOD
- T3** CROSSVILLE TILE- COVE BASE 6x12
SCG1 URBAN
- T5** CROSSVILLE TILE 4x8
COLOR BY NUMBERS WT02 'TEA FOR TWO'
GLOSS

- T6** CROSSVILLE TILE 4x8
COLOR BY NUMBERS WT14 'CARBON-14' GLOSS
- W1** SOLID WOOD WALL BOARDS
APA GRAPHICS 96" x 6" PLANKS
- S1** OAK ACCENT TRIM
STAINED TO MATCH PIONITE WW011
'KINGSLEY' (L1)
- S2** CHAIR RAIL
STAINED TO MATCH PIONITE WW011
'KINGSLEY' (L1)