

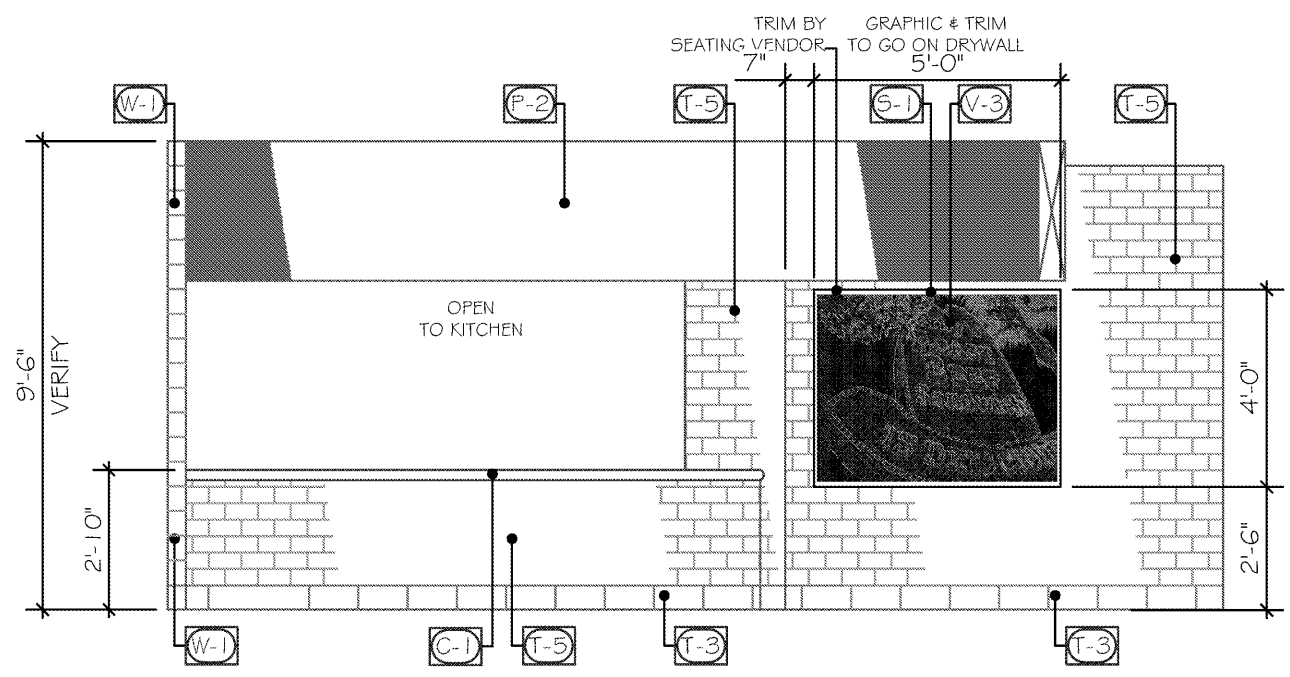
STORE No.: **8688**

REVISION	DATE	BY

SHEET TITLE: ELEVATIONS
SCALE: 1/4" = 1'-0"
ADDRESS: 2385 Len Patterson Road
Fort Mill, SC

ACCOUNT: Arby's
DESIGN BY: Henry
DATE: 8/6/19
PROJECT NO.: **E2_60831**
REVISION: 00 SHEET NO.: 6

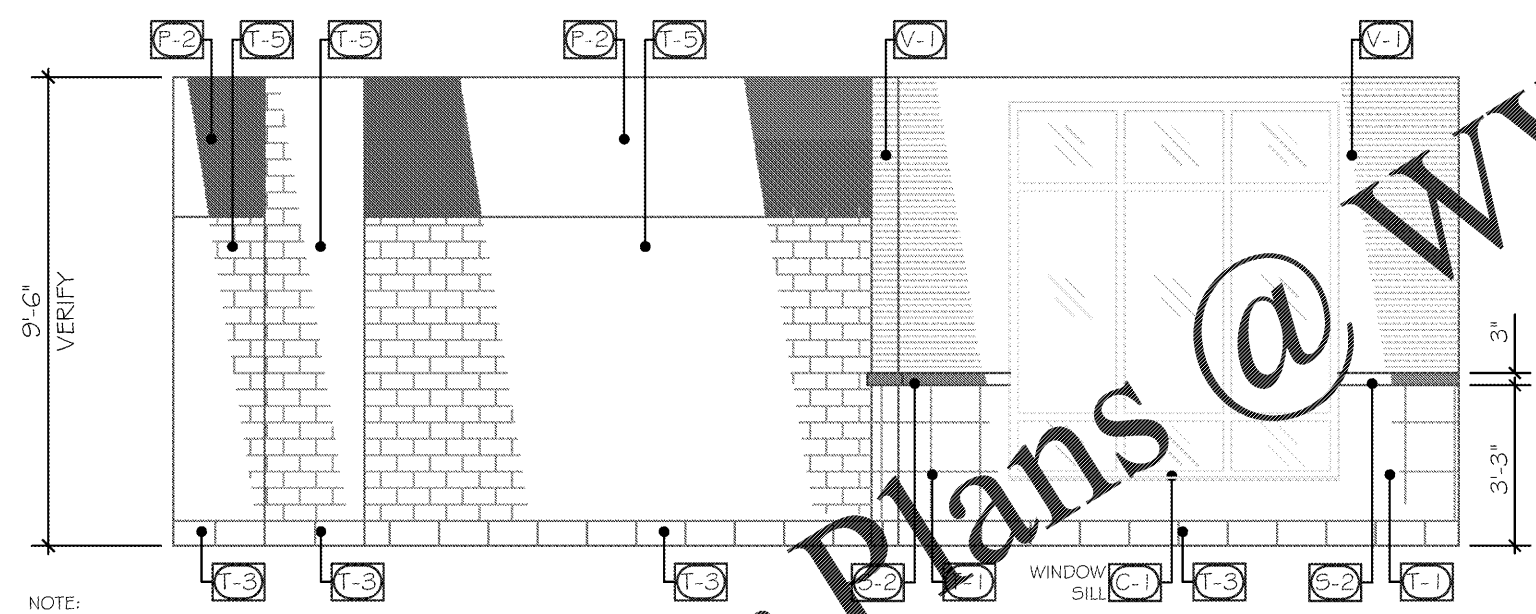
CITY, ST **Fort Mill, SC**



NOTE:
TILED WALLS TO RECEIVE BRUSHED ALUMINUM SCHLUTE
CORNER GUARD ON ALL OUTSIDE CORNERS.

ELEVATION **(A)**

NOTE:
ALL FILL PATTERNS SHOWN ON THE DRAWINGS/ELEVATIONS
ARE ONLY TO HELP SHOW DESIGN INTENT.
THEY DO NOT REPRESENT THE TRUE INSTALL PATTERN.



NOTE:
TILED WALLS TO RECEIVE BRUSHED ALUMINUM SCHLUTE
CORNER GUARD ON ALL OUTSIDE CORNERS.

ELEVATION **(B)**

NOTE:
ALL FILL PATTERNS SHOWN ON THE DRAWINGS/ELEVATIONS
ARE ONLY TO HELP SHOW DESIGN INTENT.
THEY DO NOT REPRESENT THE TRUE INSTALL PATTERN.

UNLESS OTHERWISE SPECIFIED:

- (P1)** SHERWIN WILLIAMS
COLOR: SW7038 'TONY TAUBER'
- (P2)** SHERWIN WILLIAMS
COLOR: SW6864 'CHERRY TOMATO'
- (P3)** SHERWIN WILLIAMS
COLOR: SW6083 'SABLE GLOSS'
- (P4)** SHERWIN WILLIAMS
COLOR: SW7005 'PURE WHITE'

- (L1)** LAMINATE: PIONITE WW011 SUEDE
'KINGSLEY'
- (L2)** LAMINATE: PIONITE WX110 SUEDE '
SMOOTH PADDLIN'
- (L3)** FORMICA 5884-58
'CHESTNUT WOODLINE'
- (C1)** CORIAN 'ARCTIC ICE'

- (V1)** WOLF GORDON
'BAMBOO PLATINUM' G9061644
- (V2)** KOROSEAL
'POSEIDEN Z521-66' VOLTE
- (V3)** APA GRAPHICS
CUSTOM 'CHALKBOARD VINTAGE
ARBYS'
- (V5)** WOLF GORDON
G9061643 STRINGS PITCH BLACK

- (T1)** CROSSVILLE TILE- 12x12
SCG1 URBAN
- (T2)** CROSSVILLE TILE 6x24
SWG8 LAKEWOOD
- (T3)** CROSSVILLE TILE- COVE BASE 6x12
SCG1 URBAN
- (T5)** CROSSVILLE TILE 4x8
COLOR BY NUMBERS WT02 'TEA FOR TWO'
GLOSS

- (T6)** CROSSVILLE TILE 4x8
COLOR BY NUMBERS WT14 'CARBON-14' GLOSS
- (W1)** SOLID WOOD WALL BOARDS
APA GRAPHICS 96" x 6" PLANKS
- (S1)** OAK ACCENT TRIM
STAINED TO MATCH PIONITE WW011
'KINGSLEY' (L1)
- (S2)** CHAIR RAIL
STAINED TO MATCH PIONITE WW011
'KINGSLEY' (L1)