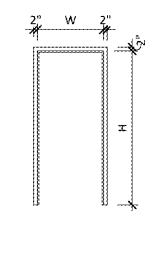
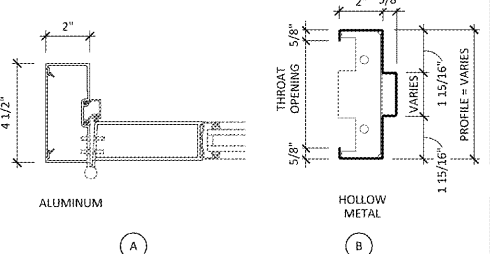


1 DOOR ELEVATION
A8.1 1/4" = 1'-0"



2 FRAME ELEVATION
A8.1 1/4" = 1'-0"



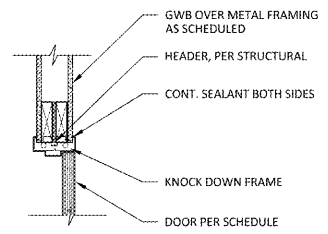
3 FRAME PROFILE
A8.1 3" = 1'-0"

NO.	LOCATION	SIZE	DOOR			HARDWARE SET	FRAME			DETAILS			RATING	REMARKS	
			MATERIAL	FINISH	ELEV.		PROFILE	MATERIAL	FINISH	ELEV.	HEAD	JAMB			SILL
101A	VESTIBULE	3'-0" x 7'-0" x 1 3/4"	ALUM	DK. BRZ.	1A/A8.1	SET 1	3A/A8.1	ALUM	DK. BRZ.	1A/A8.2	5/A8.1	8/A8.1	12/A8.1	---	REFER TO STOREFRONT ELVLS.
101B	VESTIBULE	3'-0" x 7'-0" x 1 3/4"	ALUM	DK. BRZ.	1A/A8.1	SET 2	3A/A8.1	ALUM	DK. BRZ.	1B/A8.2	5/A8.1	9/A8.1	13/A8.1	---	REFER TO DECOR DRAWINGS
104	SERVICE AREA	3'-0" x 7'-0" x 1 3/4"	SCWD	PLAM	1D/A8.1	SET 5	3B/A8.1	KD HM	PTD	1E/A8.1	4/A8.1	7/A8.1	11/A8.1	---	REFER TO DECOR DRAWINGS
106	KITCHEN	4'-0" x 7'-0" x 1 3/4"	INS. HM	PTD	1B/A8.1	SET 3	IMPACT RATED HOLLOW METAL DOOR BY COOLER/FREEZER MANUFACTURER. REFER TO COOLER/FREEZER SHOP DRAWINGS FOR MORE INFORMATION								
111	WOMEN'S RESTROOM	3'-0" x 7'-0" x 1 3/4"	SCWD	PLAM	1C/A8.1	SET 4	3B/A8.1	KD HM	PTD	2/A8.1	4/A8.1	7/A8.1	11/A8.1	---	REFER TO DECOR DRAWINGS
112	MEN'S RESTROOM	3'-0" x 7'-0" x 1 3/4"	SCWD	PLAM	1C/A8.1	SET 4	3B/A8.1	KD HM	PTD	2/A8.1	4/A8.1	7/A8.1	11/A8.1	---	REFER TO DECOR DRAWINGS
113	HALL	3'-0" x 7'-0" x 1 3/4"	ALUM.	DK. BRZ.	1A/A8.1	SET 1	3A/A8.1	ALUM	DK. BRZ.	1C/A8.2	5/A8.1	8/A8.1	12/A8.1	---	REFER TO STOREFRONT ELVLS.

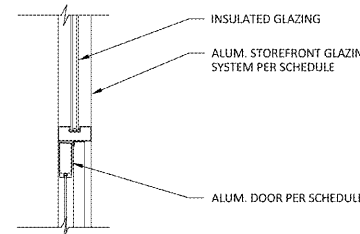
SET 1 (EXTERIOR VESTIBULE DOOR)		SET 3 (REAR SERVICE DOOR)		SET 5 (KITCHEN DOOR)	
1 HAGER CONTINUOUS HINGE - MATCH DOOR FINISH	1 CAL-ROYAL 7700EO RIM PANIC 48" (EQUAL TO VON DOPRIN 99) 32D	1 ROTON 780-112HD CONTINUOUS MORTISE HINGE AL 8" CLEAR	1 CAL-ROYAL 7700NL NIGHT LATCH TRIM/PULL	1 1/2 PR. HAGER HINGES ECBB 1100 26D	1 HAGER 3410 WITHNELL HEAVY DUTY PASSAGE SET 26D
1 DOR-O-MATIC EXIT DEVICE 1993 26D	1 SCHLAGE RIM CYLINDER 20-022 626	1 CAL-ROYAL 7700NL NIGHT LATCH TRIM/PULL	1 SCHLAGE RIM CYLINDER 20-022C 626	1 HAGER 5100 GRADE 1 HEAVY DUTY SURFACE CLOSER	1 HAGER 1905 KICK PLATE 32D 8" X 34"
1 LCN DOOR CLOSER 1371-REG-AL (TOP JAMB MOUNT)	1 IVES FLOOR STOP FS444 26D	1 SCHLAGE RIM CYLINDER 20-022C 626	1 HAGER 5100 HDHDS	1 HAGER 1905 KICK PLATE 32D 8" X 34"	1 HAGER 243F LIGHT DUTY DOME STOP HIGH
1 HAGER THRESHOLD 4185 AL	1 HAGER WEATHERSTRIP 736S	1 HAGER ARMOR PLATE 1935 (BEVEL D 3" X 3" X 3/16" 30" X 46" 34")	1 HAGER 267S CAST FLOOR STOP 3 7/8" 1 1/2 1/4" BASE 26D	1 HAGER 243F LIGHT DUTY DOME STOP HIGH	1 HAGER WEATHERSTRIP 736S
1 HAGER WEATHERSTRIP 736S	1 HAGER SWEEP 7535 AL	1 HAGER 1756 185 DEGREE VIEWER 15"	1 HAGER 241S PANIC THRESHOLD 2 1/2" WIDT W/ VINYL BUMPER STOP	1 HAGER WEATHERSTRIP 736S	1 HAGER SWEEP 7535 AL
1 HAGER SWEEP 7535 AL		1 HAGER 241S PANIC THRESHOLD 2 1/2" WIDT W/ VINYL BUMPER STOP	1 HAGER WEATHERSTRIP 736S	1 HAGER WEATHERSTRIP 736S	1 HAGER SWEEP 7535 AL

GENERAL DOOR NOTES

- ALL EXTERIOR ALUMINUM DOOR FRAMES TO BE PROVIDED AS PART OF THE STOREFRONT SYSTEM. PROVIDE DOOR MANUFACTURER'S STANDARD REINFORCING AT VERTICAL/HORIZONTAL MEMBERS TO MEET CODE REQUIRED WIND LOADS.
- THE EXTERIOR SIDE OF ALL HOLLOW METAL DOOR FRAMES AND DOORS TO BE PAINTED TO MATCH BUILDING.
- ALL HOLLOW METAL DOOR FRAMES SHALL BE 16 GA. WITH ALL HOLLOW METAL DOORS @ 18 GA.
- ALL EXTERIOR HOLLOW METAL DOOR FRAMES ARE TO BE GROUTED SOLID. COAT INTERIOR OF FRAME WITH SUNNY COAT EMULSION PRIOR TO GROUTING.
- PROVIDE RUST INHIBITOR COATING AND STAINLESS STEEL SCREWS/FASTENERS ON ALL HARDWARE ITEMS PER MANUFACTURER'S SPECIFICATIONS.
- ALL DOOR LOCKSETS / PASSAGE SETS SHALL BE OF THE LEVER HANDLE TYPE. HARDWARE SHALL BE MOUNTED 30" AFF.
- MAXIMUM EFFORT TO OPERATE EXTERIOR OR INTERIOR DOORS WITH CLOSERS SHALL NOT EXCEED 5 POUNDS. MAXIMUM EFFORT TO OPERATE EXTERIOR HINGED DOORS WITH CLOSERS SHALL NOT EXCEED 8.5 POUNDS. THIS MAY BE INCREASED TO 15 POUNDS FOR FIRE-RATED DOORS.
- THE BOTTOM 10 INCHES OF ALL DOORS SHALL HAVE A SMOOTH AND UNINTERRUPTED SURFACE TO ALLOW THE DOOR TO BE OPENED BY A WHEELCHAIR FOOTREST WITHOUT CREATING A TRAP OR HAZARDOUS CONDITION.
- VERIFY ALL RUGH OPENING SIZES AND REQUIREMENTS WITH DOOR MANUFACTURER.
- COORDINATE OPENINGS & FRAMING WITH PROJECT MANAGER BEFORE INSTALLATION OF DOORS.
- PROVIDE SOLID F.R.T. WOOD BLOCKING WITHIN STUD WALL FRAMING ADJACENT TO STRIKE PLATE. BLOCKING TO EXTEND MIN. 12" ABOVE AND BELOW STRIKE PLATE.
- ALL LOCKSETS TO BE PROVIDED WITH REMOVABLE CONSTRUCTION CORE CYLINDERS SUPPLIED BY HARDWARE MANUFACTURER. CONTRACTOR TO PROVIDE OWNER WITH PERMANENT CORE CYLINDERS FOR MASTER KEYING BY CONTRACTOR AT THE COMPLETION OF THE PROJECT.
- COORDINATE DOOR HARDWARE & HARDWARE INSTALLATION WITH OWNER.
- UNDERCUT TOILET ROOM DOOR FOR AIR INTAKE. SEE MECHANICAL SHEETS.
- ON ALL EXISTING INTERIOR DOOR/FRAMING/HARDWARE TO REMAIN VERIFY DOOR AND HARDWARE ARE IN GOOD WORKING ORDER. REPLACE DOOR AND HARDWARE AS REQUIRED.
- ALL HARDWARE TO COMPLY WITH THE LATEST REQUIREMENTS OF ADAAG/ANSI.
- ALL HARDWARE MATERIAL AND FUNCTION TO BE COORDINATED WITH OWNER.
- KEYING SEQUENCE TO BE COORDINATED WITH OWNER.
- PROVIDE EXIT SIGNAGE AT EACH EXIT DOOR.
- ALL GLAZING WITHIN ANY DOOR SHALL BE TEMPERED.
- DOOR THRESHOLDS TO HAVE 1/2" MAX CHANGE OF LEVEL. BEVELED WITH A SLOPE NO GREATER THAN 1:2.
- DURABLE SIGN WITH LETTERING ON A CONTRASTING BACKGROUND WILL BE PLACED OVER EXIT DOORS STATING "THIS DOOR TO REMAIN UNLOCKED DURING BUSINESS HOURS".
- HANDLES, PULLS, LATCHES AND OTHER OPERATING DEVICES ON ACCESSIBLE DOORS SHALL HAVE A SHAPE THAT IS EASY TO GRASP WITH ONE HAND AND DOESN'T REQUIRE TIGHT GRASPING, TIGHT PINCHING OR TWISTING OF THE WRIST TO OPERATE.
- REFER TO DECOR DRAWINGS FOR HOLLOW METAL DOOR FRAME PAINT COLOR.
- ALUMINUM DOORS AND FRAMES ARE TO BE DARK BRONZE ANODIZED

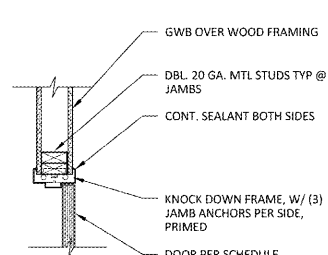


4 HEAD DETAIL
A8.1 1" = 1'-0"

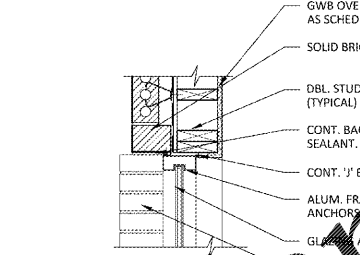


5 HEAD DETAIL
A8.1 1" = 1'-0"

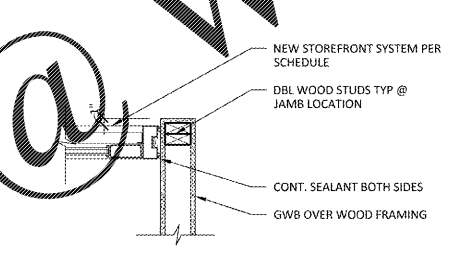
6 NOT USED
A8.1



7 JAMB DETAIL
A8.1 1" = 1'-0"

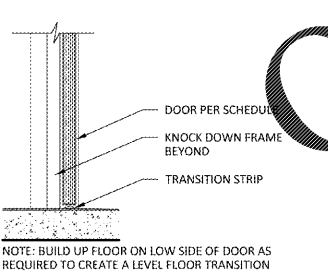


8 JAMB DETAIL
A8.1 1" = 1'-0"

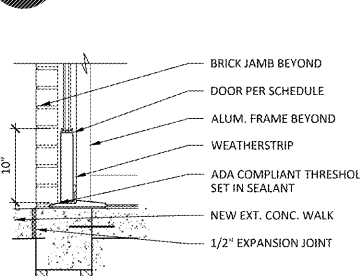


9 JAMB DETAIL
A8.1 1" = 1'-0"

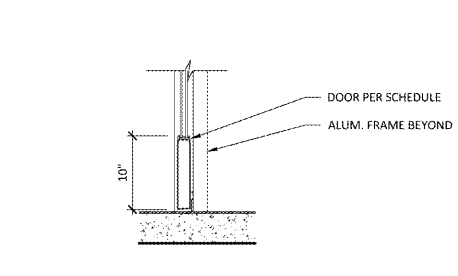
10 NOT USED
A8.1



11 SILL DETAIL
A8.1 1" = 1'-0"

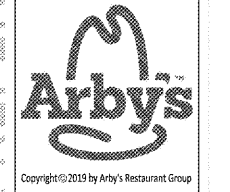


12 SILL DETAIL
A8.1 1" = 1'-0"



13 SILL DETAIL
A8.1 1" = 1'-0"

PROFESSIONAL INFORMATION NOTICE
THESE PROFESSIONAL DOCUMENTS MAY REQUIRE REVISIONS TO CONFORM TO LOCAL, STATE, AND FEDERAL CODES, ORDINANCES OR OTHER CONDITIONS. THE DESIGN CONCEPTS EMBODIED IN THESE DOCUMENTS ARE SPECIFICALLY FOR THIS PROJECT. INFORMATION CONTAINED HEREIN REMAINS THE SOLE PROPERTY OF ARBY'S RESTAURANT GROUP. IT IS CONFIDENTIAL AND PROPRIETARY AND IS NOT TO BE COPIED, REPRODUCED, DISCLOSED OR OTHERWISE TRANSMITTED TO OTHER PARTIES IN ANY FORM OR MANNER WITHOUT THE EXPRESS WRITTEN CONSENT OF ARBY'S RESTAURANT GROUP.



ARBY'S RESTAURANT
INSPIRE WORKSMART 2400
2385 LEN PATTERSON RD
FORT MILL, SC 29708
FOR
BRUMIT RESTAURANT GROUP, LLC
40 SEMINOLE STREET, ASHEVILLE, NC 28803

PROJECT NUMBER:	ARF149
ISSUE	DATE
OWNER REVIEW	AUG 7, 2019

DOOR AND HARDWARE SCHEDULE

SHEET:
A8.1

Order Plans