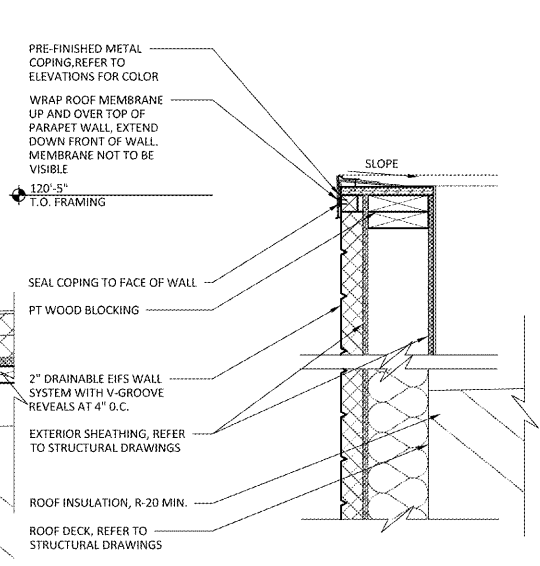
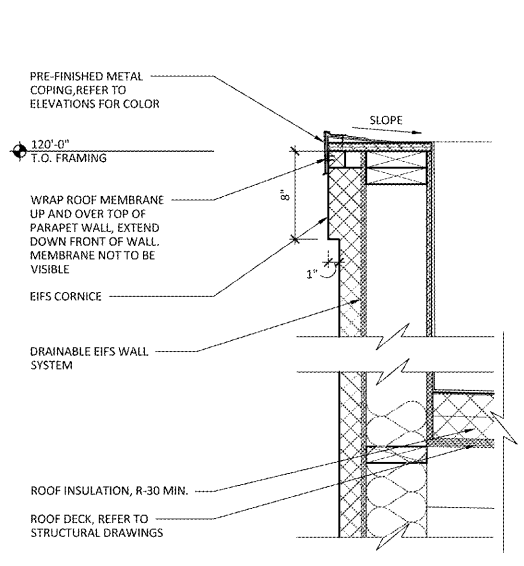


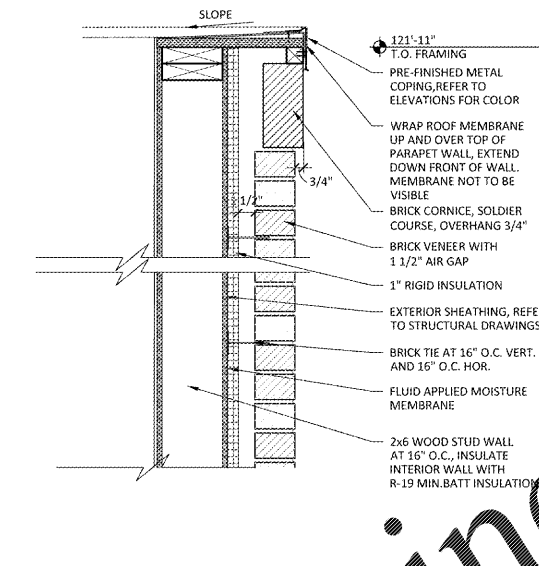
1 SECTION DETAIL
A4.4 1 1/2" = 1'-0"



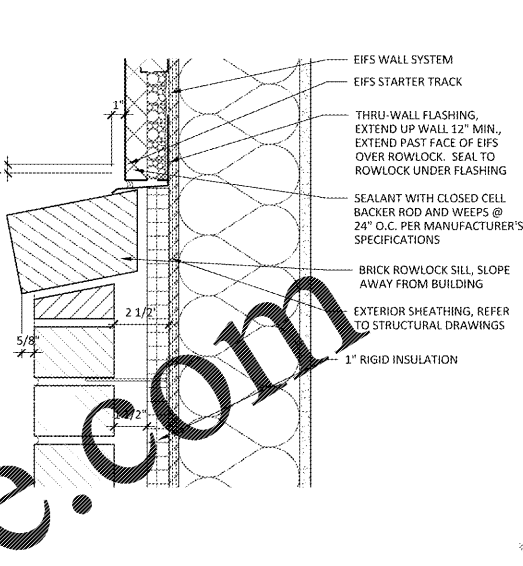
2 SECTION DETAIL
A4.4 1 1/2" = 1'-0"



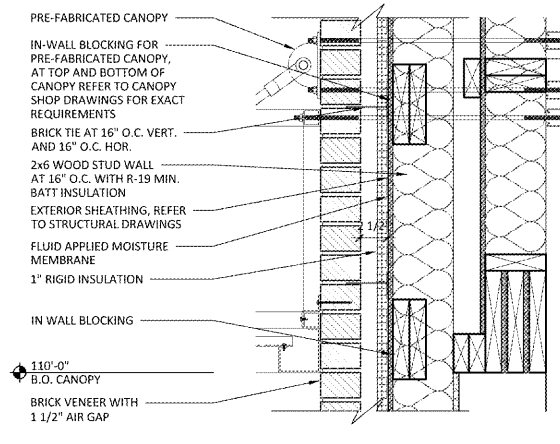
3 SECTION DETAIL
A4.4 1 1/2" = 1'-0"



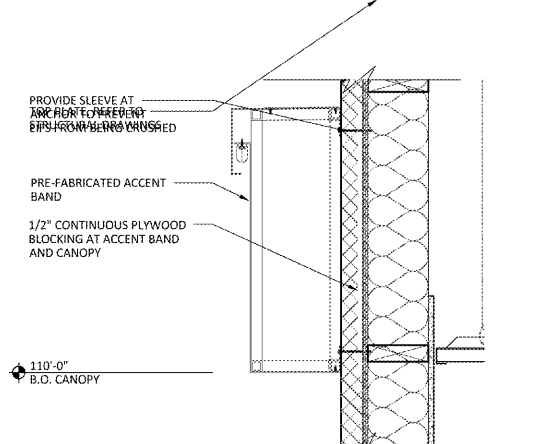
4 SECTION DETAIL
A4.4 1 1/2" = 1'-0"



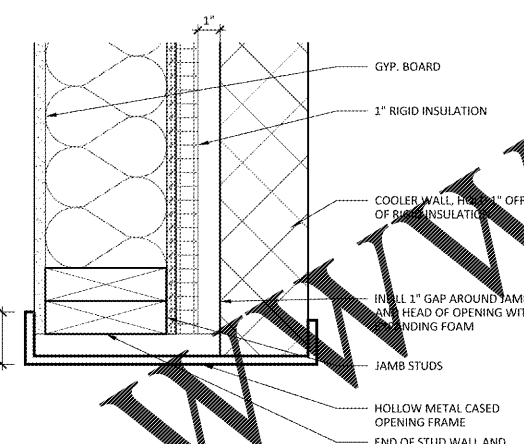
5 SECTION DETAIL
A4.4 3" = 1'-0"



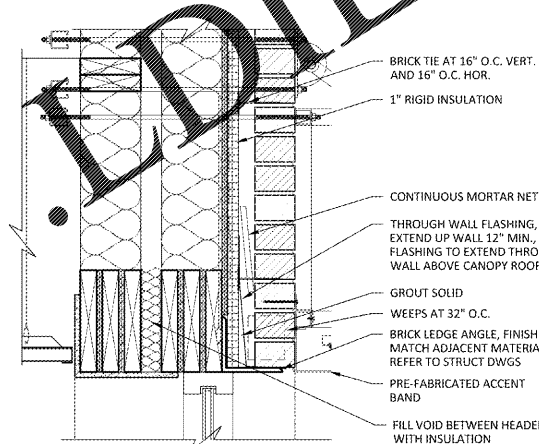
6 SECTION DETAIL
A4.4 1 1/2" = 1'-0"



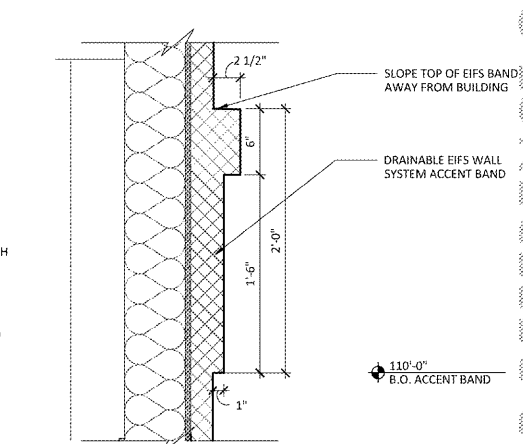
7 SECTION DETAIL
A4.4 1 1/2" = 1'-0"



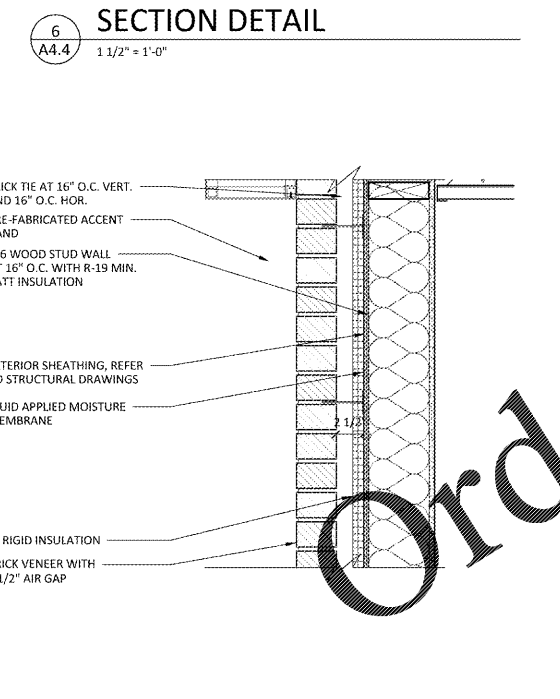
8 SECTION DETAIL
A4.4 3" = 1'-0"



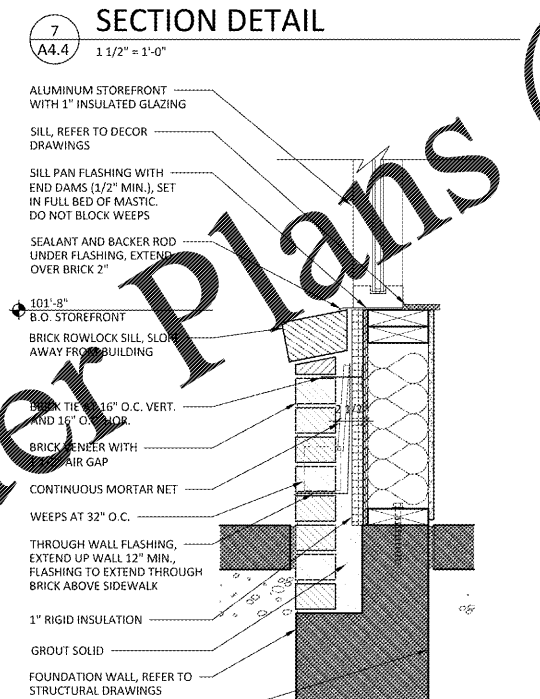
9 SECTION DETAIL
A4.4 1 1/2" = 1'-0"



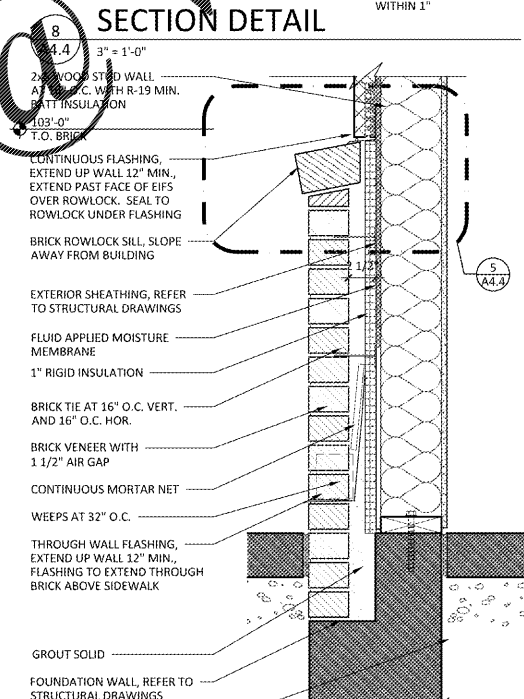
10 SECTION DETAIL
A4.4 1 1/2" = 1'-0"



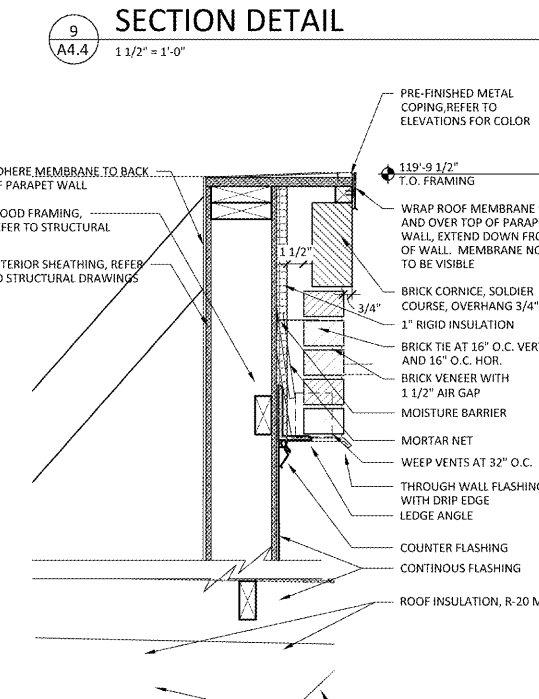
11 SECTION DETAIL
A4.4 1 1/2" = 1'-0"



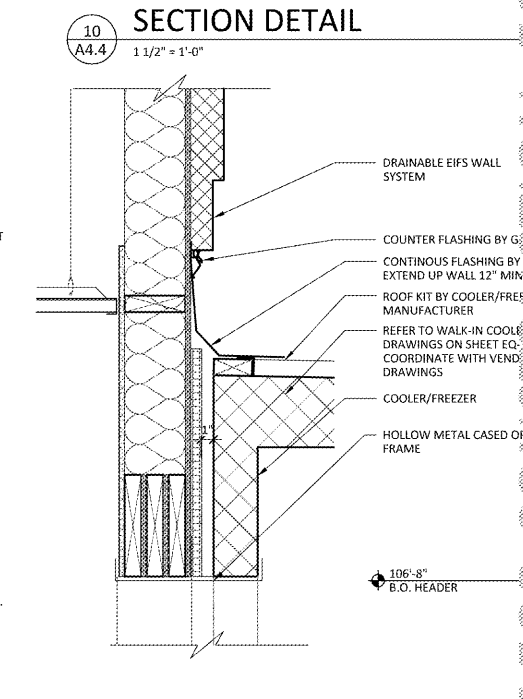
12 SECTION DETAIL
A4.4 1 1/2" = 1'-0"



13 SECTION DETAIL
A4.4 1 1/2" = 1'-0"



14 SECTION DETAIL
A4.4 1 1/2" = 1'-0"



15 SECTION DETAIL
A4.4 1 1/2" = 1'-0"

Order Plans

WWW.LDILine.com

NOT FOR CONSTRUCTION, FOR REFERENCE ONLY

red
architecture + planning
174 east long street
suite 300
columbus, ohio 43215
tel: 614.487.8770
fax: 614.487.8777

PROPRIETARY INFORMATION NOTICE:
THESE PHOTOGRAPHIC DOCUMENTS MAY REQUIRE REVISIONS TO CONFORM TO LOCAL, STATE, AND FEDERAL CODES, ORDINANCES OR OTHER CONDITIONS. THE DESIGN CONCEPTS EMBODIED IN THESE DOCUMENTS ARE SPECIFICALLY FOR THE PROJECT INFORMATION CONTAINED HEREIN REMAINS THE SOLE PROPERTY OF ARBY'S RESTAURANT GROUP. IT IS CONFIDENTIAL AND PROPRIETARY AND IS NOT TO BE COPIED, REPRODUCED, DISCLOSED OR OTHERWISE TRANSMITTED TO OTHER PARTIES IN ANY FORM WHATSOEVER WITHOUT THE EXPRESS WRITTEN CONSENT OF ARBY'S RESTAURANT GROUP.



ARBY'S RESTAURANT
INSPIRE WORKSMART 2400
2385 LEN PATTERSON RD
FORT MILL, SC 29708
FOR
BRUMIT RESTAURANT GROUP, LLC
40 SEMINOLE STREET, ASHEVILLE, NC 28803

PROJECT NUMBER:	ARF149
ISSUE	DATE
OWNER REVIEW	AUG 7, 2019

SECTION DETAILS
SHEET:
A4.4