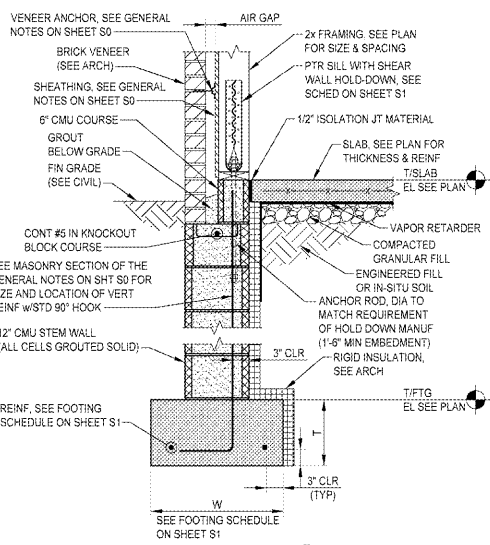
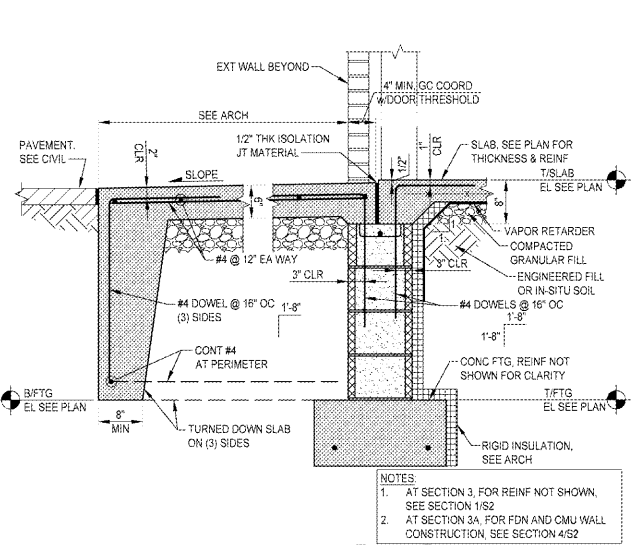


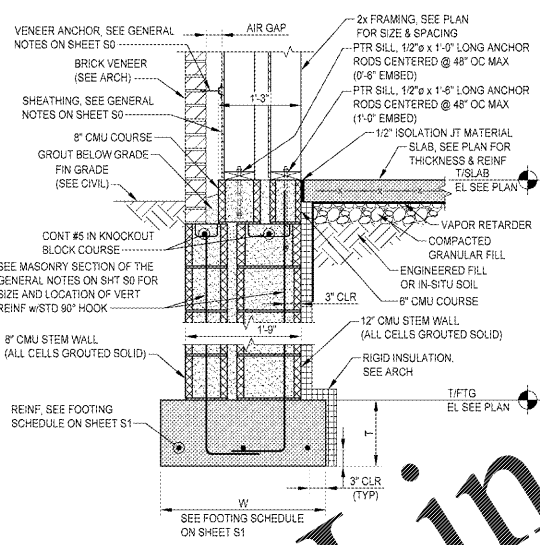
SECTION 1 S2
SCALE: 3/4\"/>



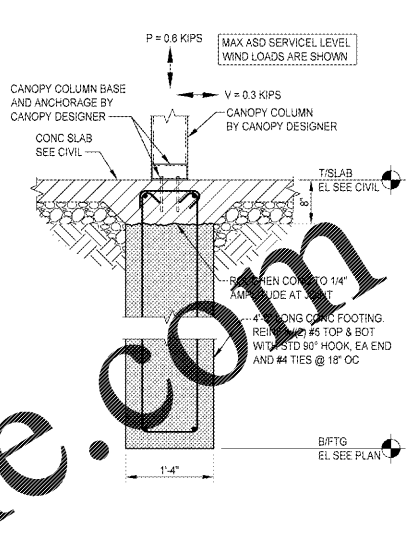
SECTION 2 S2
SCALE: 3/4\"/>



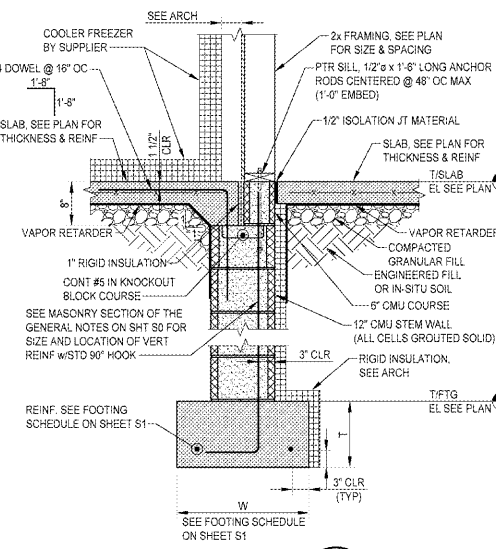
SECTION 3 S2 3A S2
SCALE: 3/4\"/>



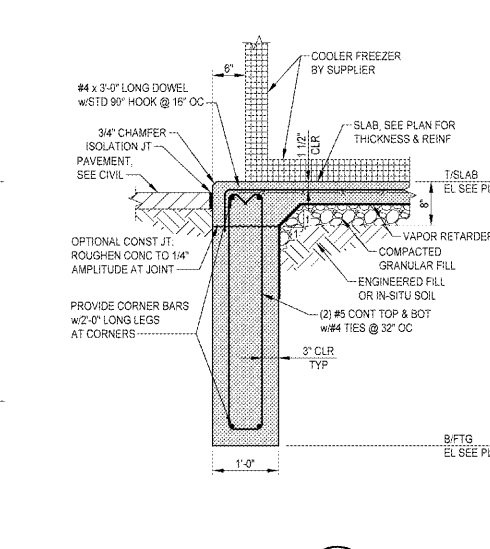
SECTION 4 S2
SCALE: 3/4\"/>



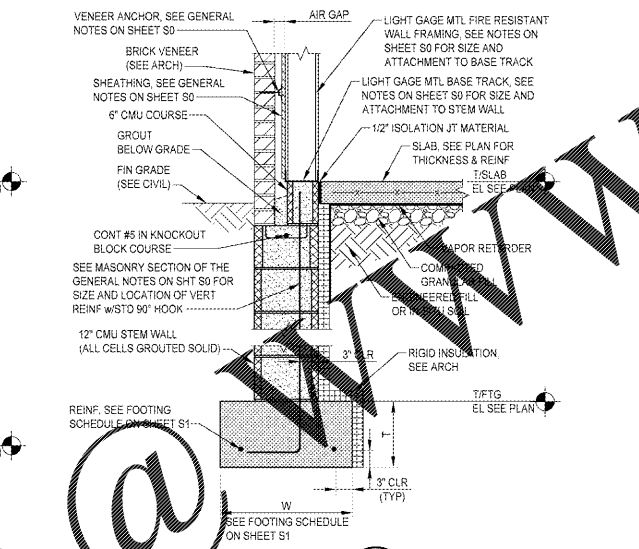
SECTION 5 S2
SCALE: 3/4\"/>



SECTION 6 S2
SCALE: 1\"/>



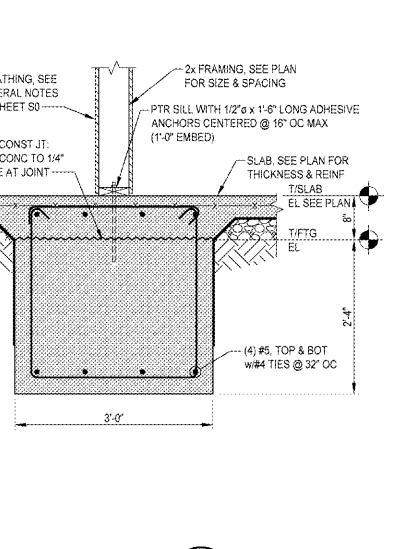
SECTION 7 S2
SCALE: 1\"/>



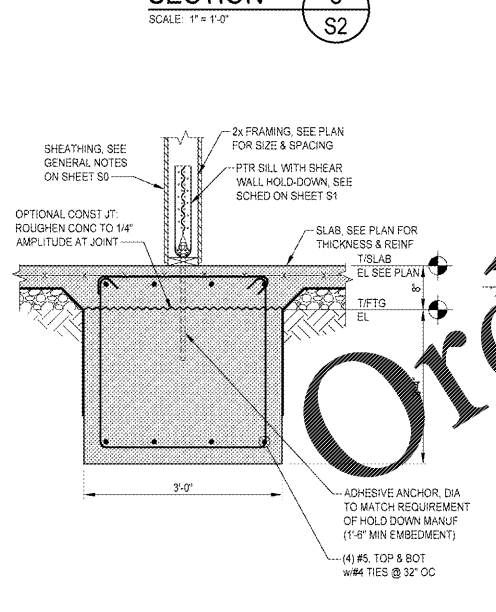
SECTION 8 S2
SCALE: 3/4\"/>



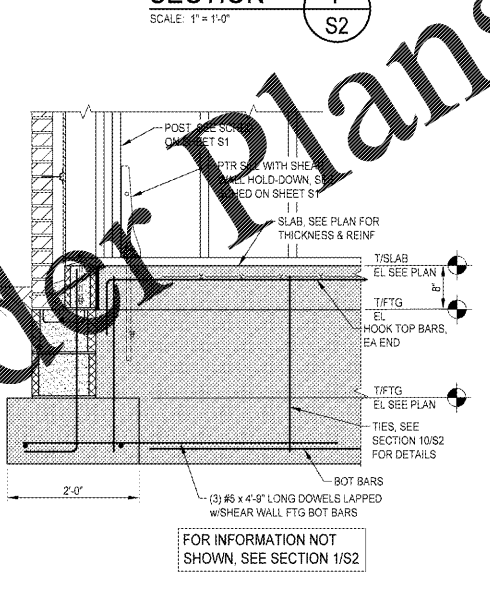
SECTION 9 S2
SCALE: 3/4\"/>



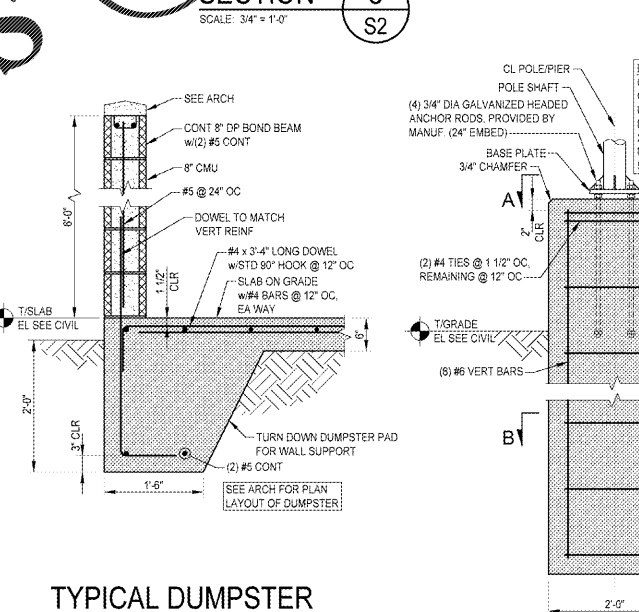
SECTION 10 S2
SCALE: 3/4\"/>



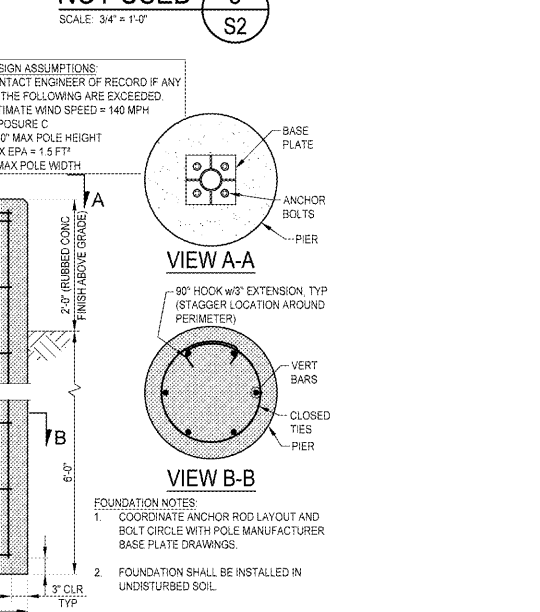
SECTION 11 S2
SCALE: 3/4\"/>



SECTION 12 S2
SCALE: 3/4\"/>



TYPICAL DUMPSTER ENCLOSURE DETAIL S2
SCALE: 3/4\"/>



TYPICAL LIGHT POLE BASE DETAIL S2
SCALE: 3/4\"/>

Order Plans

@

www.LDOnline.com

NOT FOR CONSTRUCTION, FOR REFERENCE ONLY

PJF PAUL J. FORD & COMPANY
250 E Broad St, Ste 600 - Columbus, OH 43215
Phone 614.221.6697 www.pjf.com
A99418-0012 Corp No 1715

PROFESSIONAL DOCUMENTS MUST REQUIRE REVISIONS TO CONFORM TO LOCAL, STATE, AND FEDERAL CODES, ORDINANCES OR OTHER CONDITIONS. THE DESIGN CONCEPTS EMBODIED IN THESE DOCUMENTS ARE SPECIFIC TO THIS PROJECT. INFORMATION CONTAINED HEREIN REMAINS THE SOLE PROPERTY OF ARBY'S RESTAURANT GROUP. IS CONFIDENTIAL AND NOT TO BE REPRODUCED, COPIED, OR OTHERWISE TRANSMITTED TO OTHER PARTIES IN ANY FORM WHATSOEVER WITHOUT THE EXPRESS WRITTEN CONSENT OF ARBY'S RESTAURANT GROUP.



Copyright © 2019 by Arby's Restaurant Group

ARBY'S RESTAURANT
INSPIRE WORKSMART 2400
2385 LEN PATTERSON RD
FORT MILL, SC 29708
FOR BRUMIT RESTAURANT GROUP, LLC
40 SEMINOLE STREET, ASHEVILLE, NC 28803

| | | |
|-----------------|-------------|--------|
| PROJECT NUMBER: | | ARF149 |
| ISSUE | DATE | |
| OWNER REVIEW | AUG 6, 2019 | |
| | | |
| | | |
| | | |

FOUNDATION DETAILS & SECTIONS

SHEET:
S2