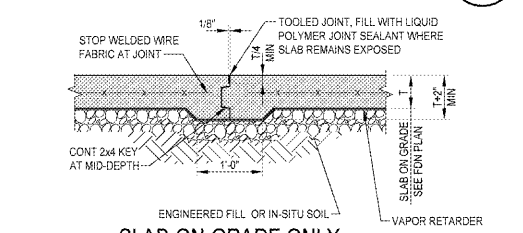
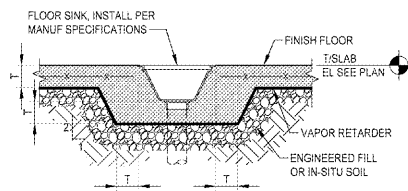


TYPICAL CONSTRUCTION JOINT DETAIL 1
SCALE: NTS

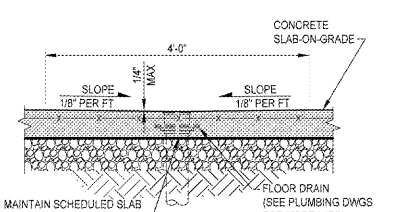
NOTES:
1. JOINTS TO BE LOCATED AT WALL CORNERS AND AT INTERMEDIATE LOCATIONS AS REQUIRED TO MAINTAIN A MAXIMUM SPACING OF (30 x SLAB THICKNESS) IN EACH DIRECTION, U.N.O.
2. PROVIDE TOOLED JOINTS IN FRESH CONCRETE EACH SIDE OF WALLS WHERE SLAB POURS THRU DOORWAYS



TYPICAL CONSTRUCTION JOINT DETAIL 2
SCALE: NTS

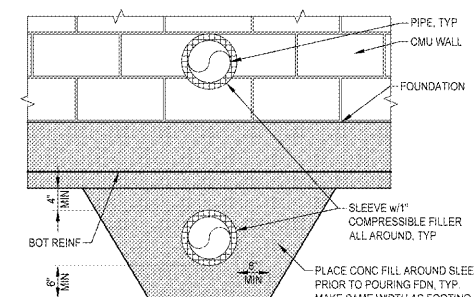


TYPICAL FLOOR SINK DRAIN

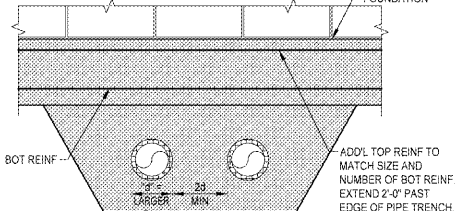


TYPICAL FLOOR DRAIN DETAILS

TYPICAL FLOOR DRAIN DETAILS 3
SCALE: NTS

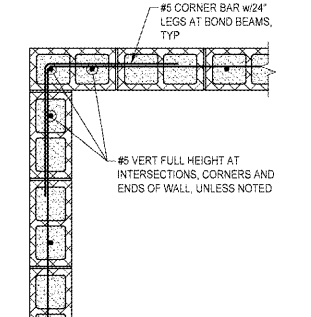


SINGLE



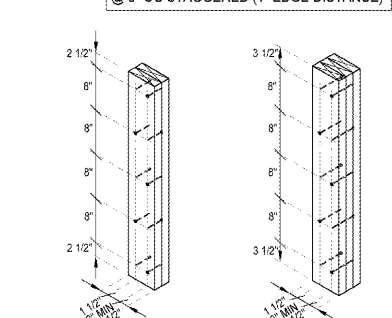
MULTIPLE (TWO OR MORE)

TYPICAL PIPE PENETRATION DETAIL 4
SCALE: NTS

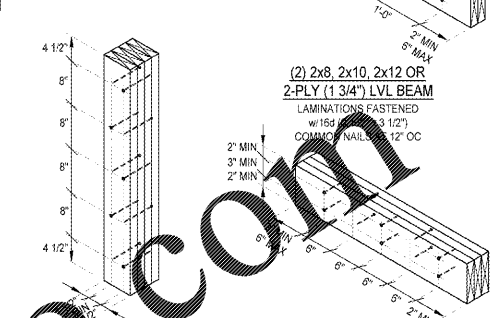


TYPICAL CMU WALL CORNER DETAIL SINGLE LAYER 5
SCALE: NTS

BUILT-UP 2x4 COLUMNS ARE SIMILAR EXCEPT WITH ONE ROW OF FASTENERS @ 6\"/>

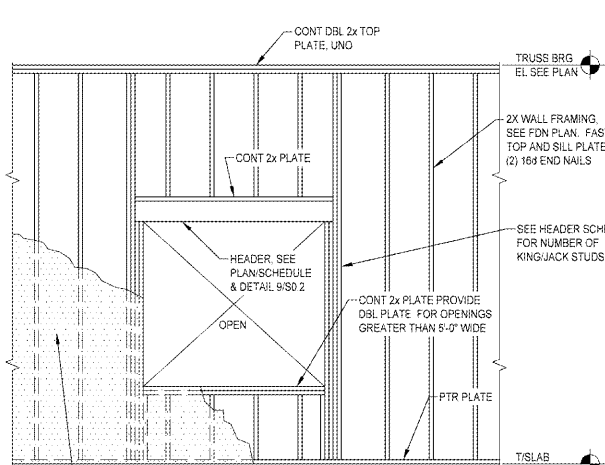


(2) 2x6 NAILED COLUMN

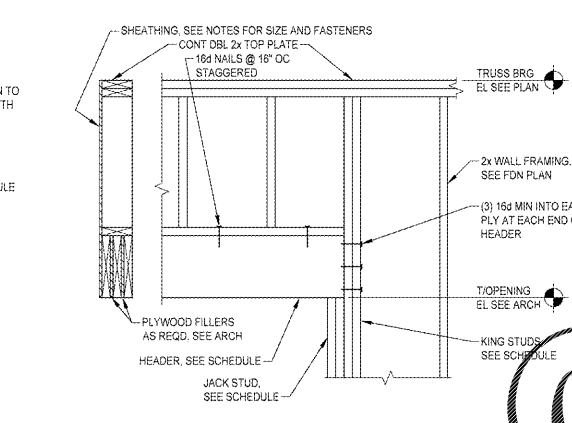


(2) 2x8, 2x10, 2x12 OR 2-PLY (1 3/4\"/>

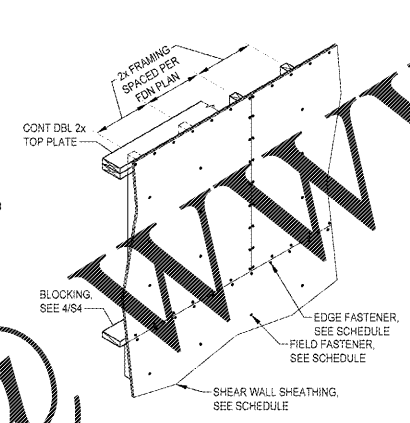
TYPICAL MULTI-MEMBER HEADER DETAIL 7
SCALE: 3/4\"/>



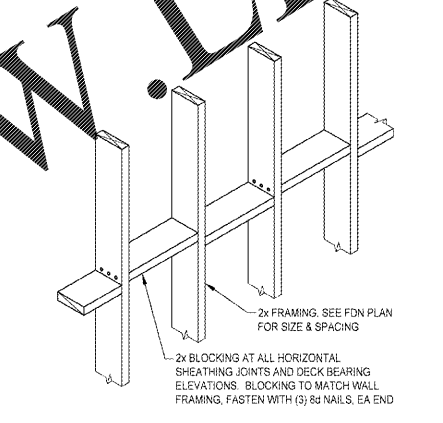
TYPICAL WALL AND OPENING CONSTRUCTION DETAIL 8
SCALE: NTS



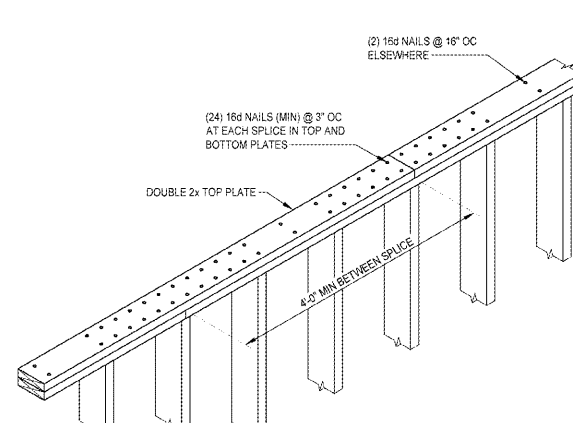
TYPICAL WOOD HEADER CONSTRUCTION DETAIL 9
SCALE: NTS



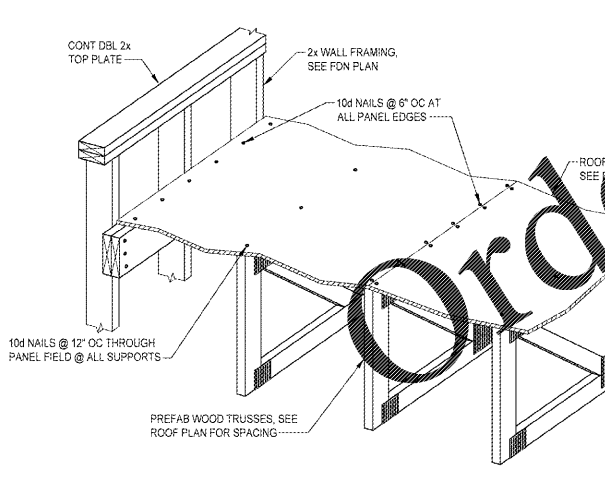
TYPICAL SHEAR WALL CONSTRUCTION DETAIL 10
SCALE: NTS



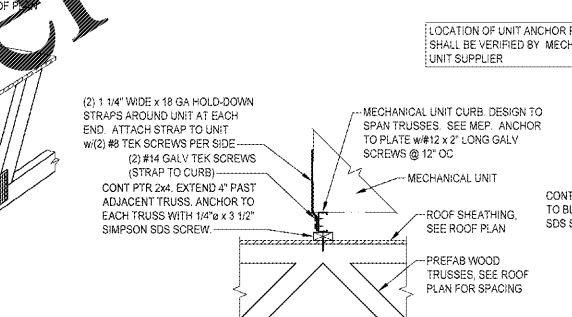
TYPICAL SHEAR WALL PANEL EDGE BLOCKING DETAIL 11
SCALE: NTS



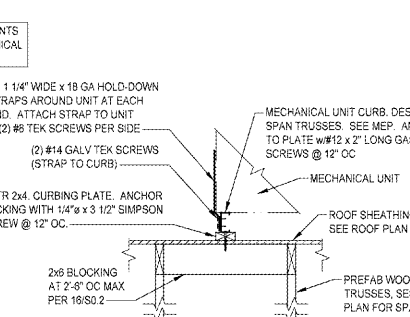
TYPICAL DOUBLE TOP PLATE SPLICE DETAIL 12
SCALE: NTS



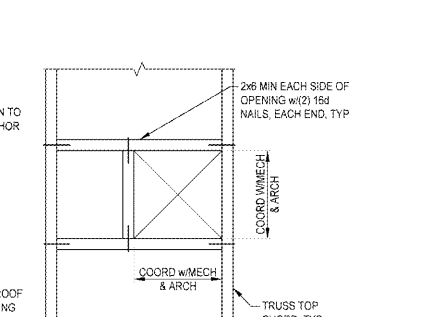
TYPICAL DIAPHRAGM NAILING DETAIL 13
SCALE: NTS



MECHANICAL CURB PERP TO TRUSSES DETAIL 14
SCALE: NTS



MECHANICAL CURB PAR TO TRUSSES DETAIL 15
SCALE: NTS



TYPICAL FRAMED OPENING DETAIL 16
SCALE: NTS

G:\Architectural\A_Projects\Columbus Projects\994 - Red Architecture\2018\099418-0012 Arby's - Ft. Mill, SC\Drawings\Current\99418-0012 S0.2.dwg tcover 8/7/2019 9:33 AM

Order Plans @ www.lidtime.com

NOT FOR CONSTRUCTION, FOR REFERENCE ONLY

Arby's

ARBY'S RESTAURANT
INSPIRE WORKSMART 2400
2385 LEN PATTERSON RD
FORT MILL, SC 29708
FOR
BRUMIT RESTAURANT GROUP, LLC
40 SEMINOLE STREET, ASHEVILLE, NC 28803

PROJECT NUMBER:
ARF149

ISSUE	DATE
OWNER REVIEW	AUG 6, 2019

TYPICAL FOUNDATION AND FRAMING DETAILS

SHEET:
S0.2

PJF PAUL J. FORD & COMPANY
250 E Broad St, Ste 600 - Columbus, OH 43215
Phone 614.221.6679 www.pjf.com
A9418-0012 Corp No 1715