

RECEIVED
MAR 21 2019
1736 E. SUNSHINE ST. SUITE 417
SPRINGFIELD, MO

Camron K. Collins, P.E. #000587
3330 E. Bancroft Rd. Suite 1000
Springfield, Missouri 65804
Phone: 417.862.9265
Fax: 417.862.9265
www.mftec.com
Malome Finkle Eckhardt & Collins, Inc.
A PROFESSIONAL ENGINEERING FIRM
LICENSED IN MISSOURI



CRAIG A. SCHNEIDER, AIA
ARCHITECT
1736 East Sunshine, Suite 417
Springfield, Missouri 65804
e-mail: architect@craigschneider.com

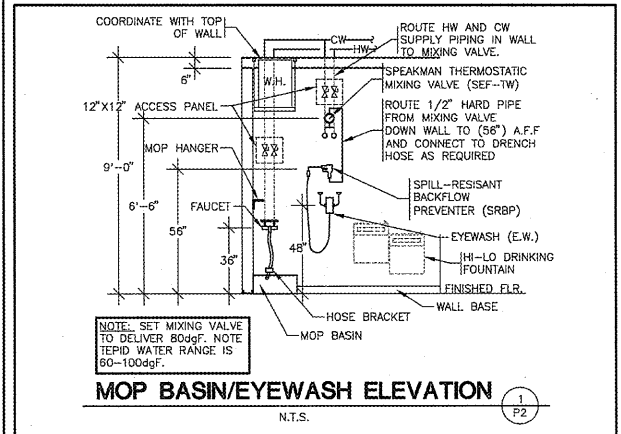
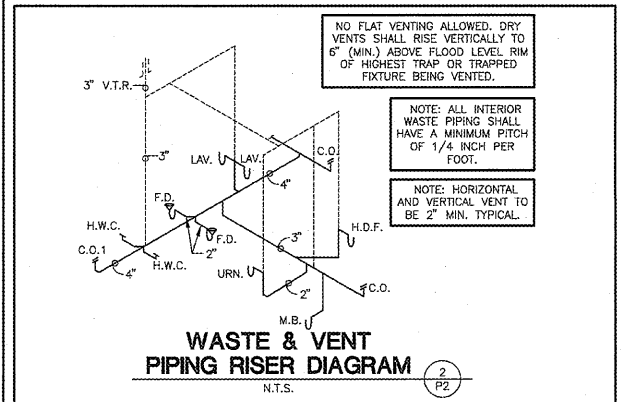
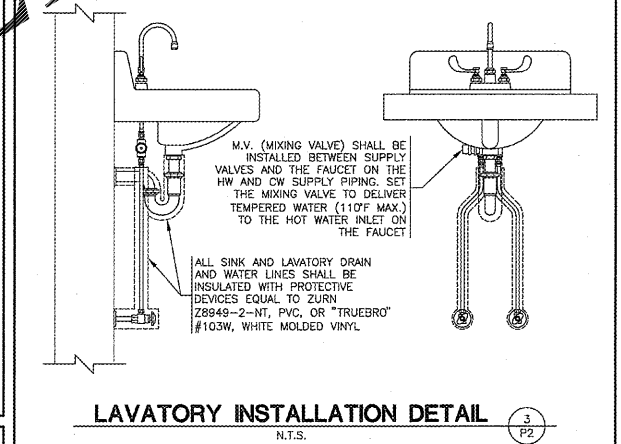
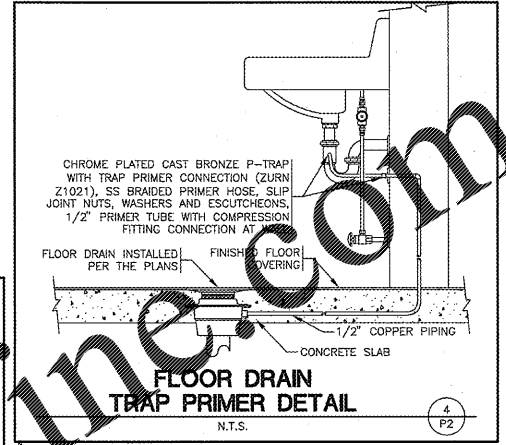
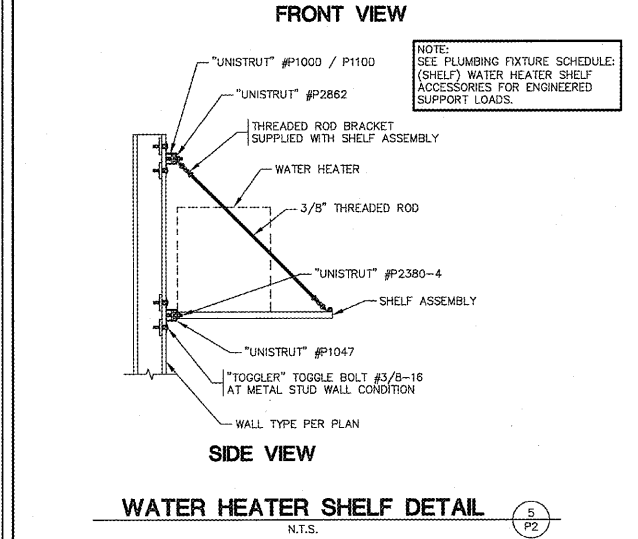
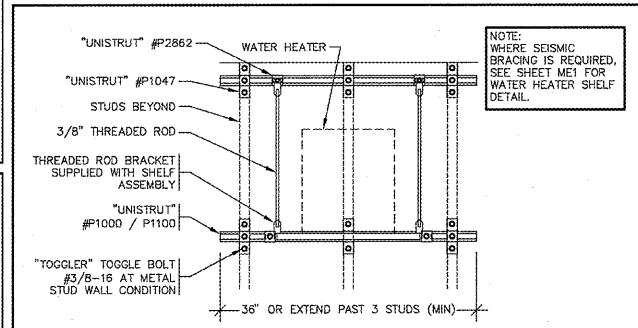
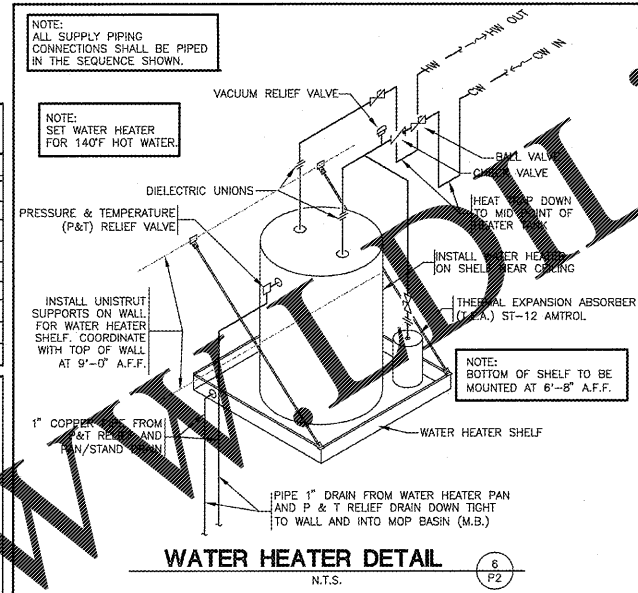
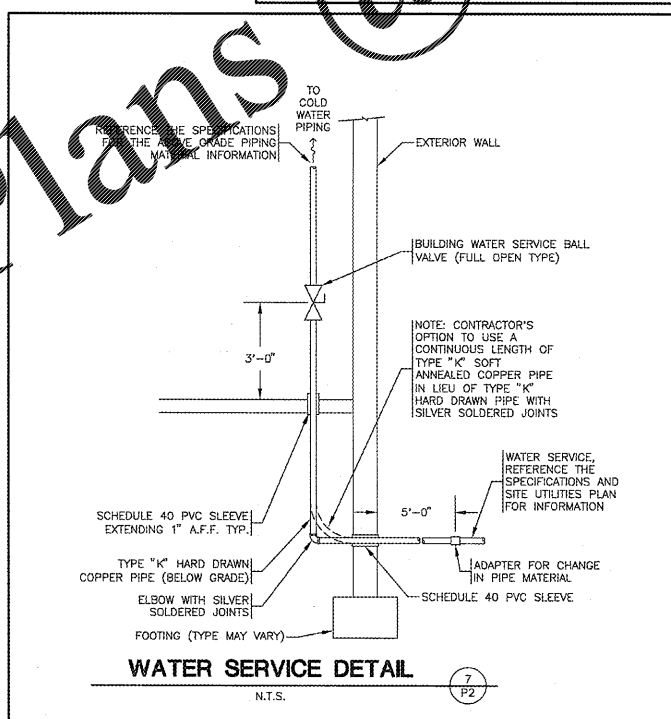
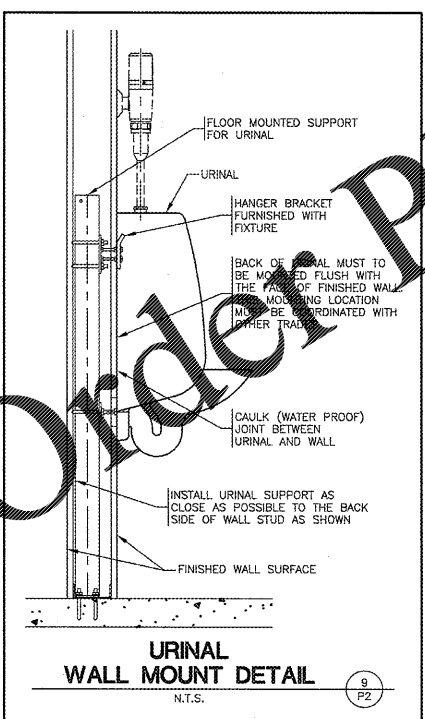
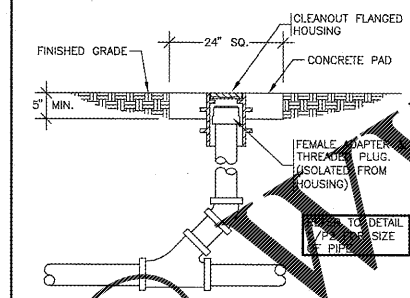
PROJECT:
NEW O'REILLY AUTO PARTS STORE
N. MAIN STREET
WALNUT COVE, NC
PLUMBING DETAILS

O'Reilly AUTO PARTS
CORPORATE OFFICES
233 SOUTH PATTERSON
SPRINGFIELD, MISSOURI 65802
(417) 862-2674 TELEPHONE

COMM # 4300
DATE: 3-22-19
REVISION DATE:

PLUMBING CALCULATIONS

FIXTURE	QUANTITY	TOTAL-SFU	TOTAL	TOTAL-HW	TOTAL	DFU	TOTAL
W.C. (TANK)	2	5	10	0	0	4	8
URN. (URINAL)	1	5	5	0	0	4	4
LAV. (LAVATORY)	2	2	4	1.5	3.00	2	4
M.B. (MOP BASIN)	1	3	3	1.5	1.50	2	2
H.D.F. (FOUNTAIN)	1	0.25	0.25	0	0	0.5	0.50
H.B. (HOSE BIBB)	2	3	6	0	0	0	0
TOTAL		28.25	TOTAL	4.50	TOTAL	16.50	
TOTAL CW GPM		20	AVERAGE DAILY FLOW = 125 gal/DAY				
COLD WATER SERVICE SIZE		1"					



H:\DRE\0790\DAO790P2 12 Mar 2019 2:02 PM