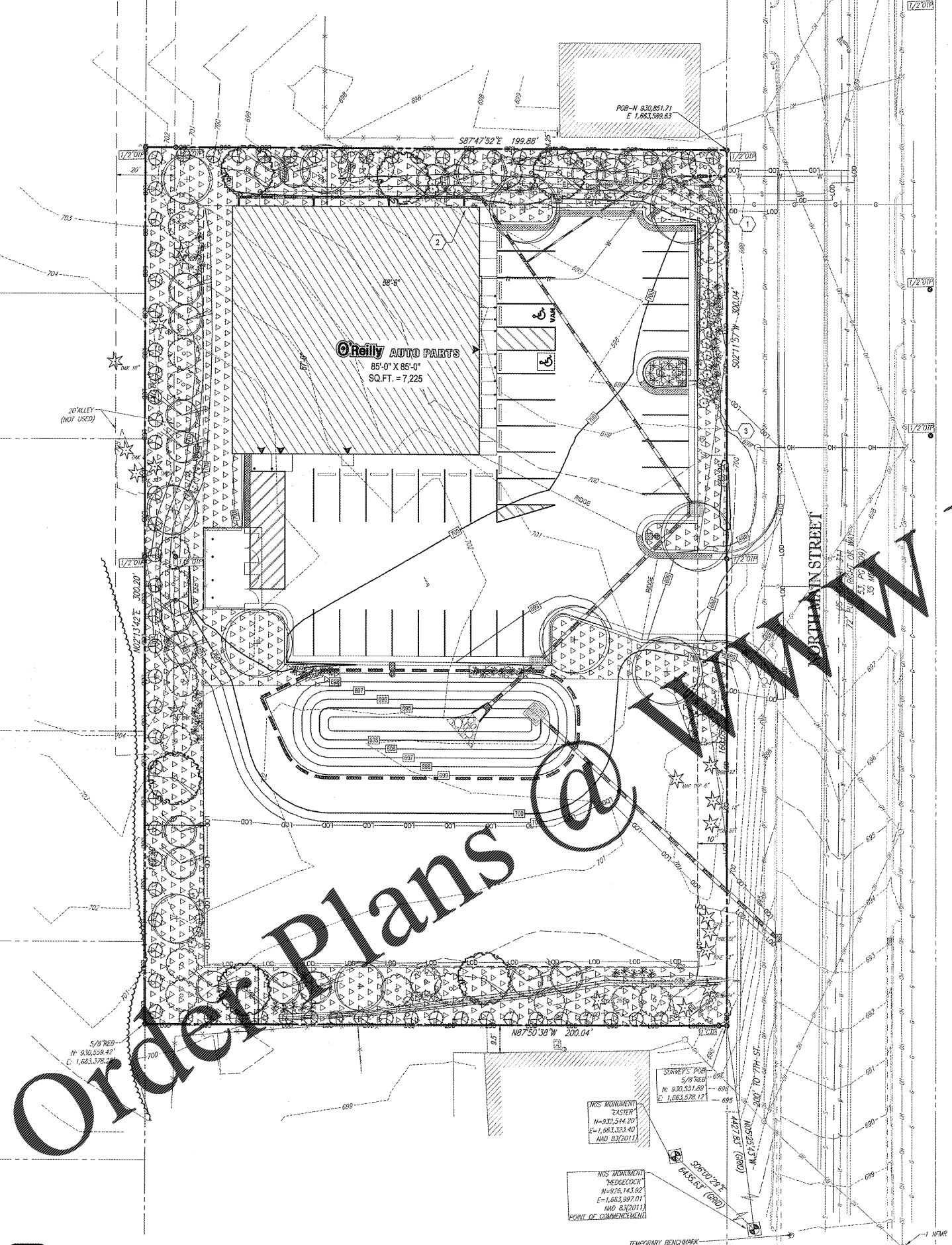
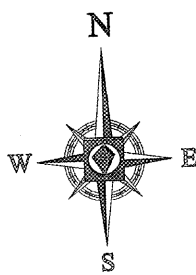


RECEIVED  
MAR 22 2019  
TUBS SPRINGFIELD, MO  
SPRINGFIELD, MO



Order Plans @ [www.LDILine.com](http://www.LDILine.com)

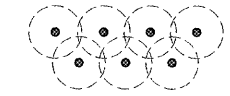
www.LDILine.com

**GENERAL NOTES**

- (A) REFER TO PROJECT MANUAL FOR ADDITIONAL REQUIREMENTS.
- (B) REFER TO CIVIL AND SITE UTILITY DRAWINGS FOR ADDITIONAL REQUIREMENTS. COORDINATE WORK WITH OTHER SITE RELATED DEVELOPMENT DRAWINGS.  
PRIOR TO INSTALLATION, GENERAL CONTRACTOR TO CONFIRM THAT LIGHT POLES, LANDSCAPING AND UTILITIES DO NOT CONFLICT WITH SIGN LOCATION SHOWN. IF ANY POTENTIAL CONFLICT IS DISCOVERED, GENERAL CONTRACTOR IS TO CONTACT OWNER'S REPRESENTATIVE BEFORE PROCEEDING WITH THE WORK.
- (C) IRRIGATION SYSTEM TO BE DESIGNED BY CONTRACTOR FOR SHOWN COVERAGE AREAS INDICATED. CONTRACTOR SHALL BE RESPONSIBLE FOR PROVIDING A COMPLETE AND OPERABLE IRRIGATION SYSTEM IN ACCORDANCE WITH GOVERNING CODES, ORDINANCES, AND AUTHORITIES HAVING JURISDICTION. SUBMIT SHOP DRAWINGS FOR REVIEW AND APPROVAL AS SPECIFIED.
- (D) VERIFY MINIMUM STATIC WATER PRESSURE IS AVAILABLE AT THE PROJECT SITE PRIOR TO DESIGN AND BEGINNING CONSTRUCTION.
- (E) COORDINATE IRRIGATION SYSTEM WITH LANDSCAPING AND PLANTING. REFER TO LANDSCAPE PLAN WHEN BENCHING AVOID TREE ROOT BALLS AND INSTALL RISERS AT APPLICABLE LOCATIONS.
- (F) ADJUST SPRINKLER HEADS TO AVOID OVERTHROW ON SIDEWALKS, PAVING, WALLS, DRIVEWAYS AND BEYOND PROPERTY LINES. LINKS OTHERWISE INDICATED THROUGHOUT ALL IRRIGATION CONTROL VALVES AS REQUIRED TO PREVENT SLOTTING. ADJUST ARC AND RADIUS OF REQUIRED SPRINKLERS AS NEEDED.
- (G) SET CONTROLLER RUN TIMES TO MATCH PLANT WATER NEEDS AND SOIL CONDITIONS.
- (H) INSTALL RISERS 18" FROM WALLS AND A MINIMUM OF 12" FROM ANY SIDEWALK OR ROAD.
- (I) TOP OF SPRAY AND ROTOR HEADS SHALL BE SET AT TOP OF SOD OR TOP OF MULCH LAYERS.
- (J) PROVIDE RAIN SENSOR AND ANTI-FREEZE ASSEMBLY ON IRRIGATION SYSTEM.
- (K) THE CONTRACTOR IS FULLY RESPONSIBLE FOR THE WORK UNTIL OWNER GIVES FINAL ACCEPTANCE.
- (L) ALL CIRCUIT PIPE IS TO BE CLASS 160 PVC OR HIGHER GRADE.
- (M) ALL MAIN FITTINGS SHALL BE REINFORCED WITH 2000 PSI POURED CONCRETE THRUST BLOCKS.

**COVERAGE REQUIREMENTS**

IRRIGATION HEAD SHALL BE PLACED TO PROVIDE 100% OVERLAP HEAD-TO-HEAD COVERAGE.



**KEY NOTES**

- (1) APPROXIMATE LOCATION OF LAWN IRRIGATION METER WITH BACK FLOW PREVENTION PER CITY REQUIREMENTS. REFER TO SITE UTILITIES PLAN
- (2) IRRIGATION CONTROLLER LOCATION INSIDE OF BUILDING. PROVIDE FREEZE SENSOR AND RAIN SENSOR ON OUTSIDE OF BUILDING.
- (3) 4" DIAMETER SCHEDULE 40 PVC SLEEVES UNDER PAVEMENT FOR ROUTING OF IRRIGATION SYSTEM. PROVIDE END CAPS AND PULL WIRE.

**SYMBOLS LEGEND**

REFER TO SURVEY FOR EXISTING CONDITION SYMBOLS LEGEND



**PLAN REFERENCES**

THIS PLAN TO BE UTILIZED FOR IRRIGATION PURPOSES ONLY



PROJECT No.: NCR182158 SCALE: 1"=20'  
DRAWN BY / CHECKED BY: CBNWLB CAD I.D.: NCR182158-LSP-0



**CRAIG A. SCHNEIDER, AIA**  
ARCHITECT

1736 East Sunshine, Suite 417  
Springfield, Missouri 65804  
417.862.0558  
417.862.3265  
e-mail: [architect@esterfyschneider.com](mailto:architect@esterfyschneider.com)

PROJECT:  
NEW O'REILLY AUTO PARTS STORE  
N. MAIN ST.  
WALNUT COVE, NC

IRRIGATION PLAN

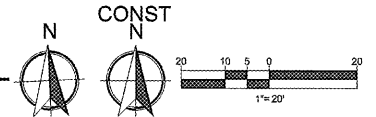


COMM # 4300  
DATE: 3-22-19  
REVISION DATE:  
REVISION DATE:

L2.1



**1 IRRIGATION PLAN**  
L2.1 SCALE: 1" = 20'



150150102158-DRAWING-IRRIGATION PLAN SETS-NCR182158-LSP-0.DWG PRINTED BY: CALDERWOOD, 3/21/19 @ 12:45 PM LAM: SAVED BY: CALDERWOOD