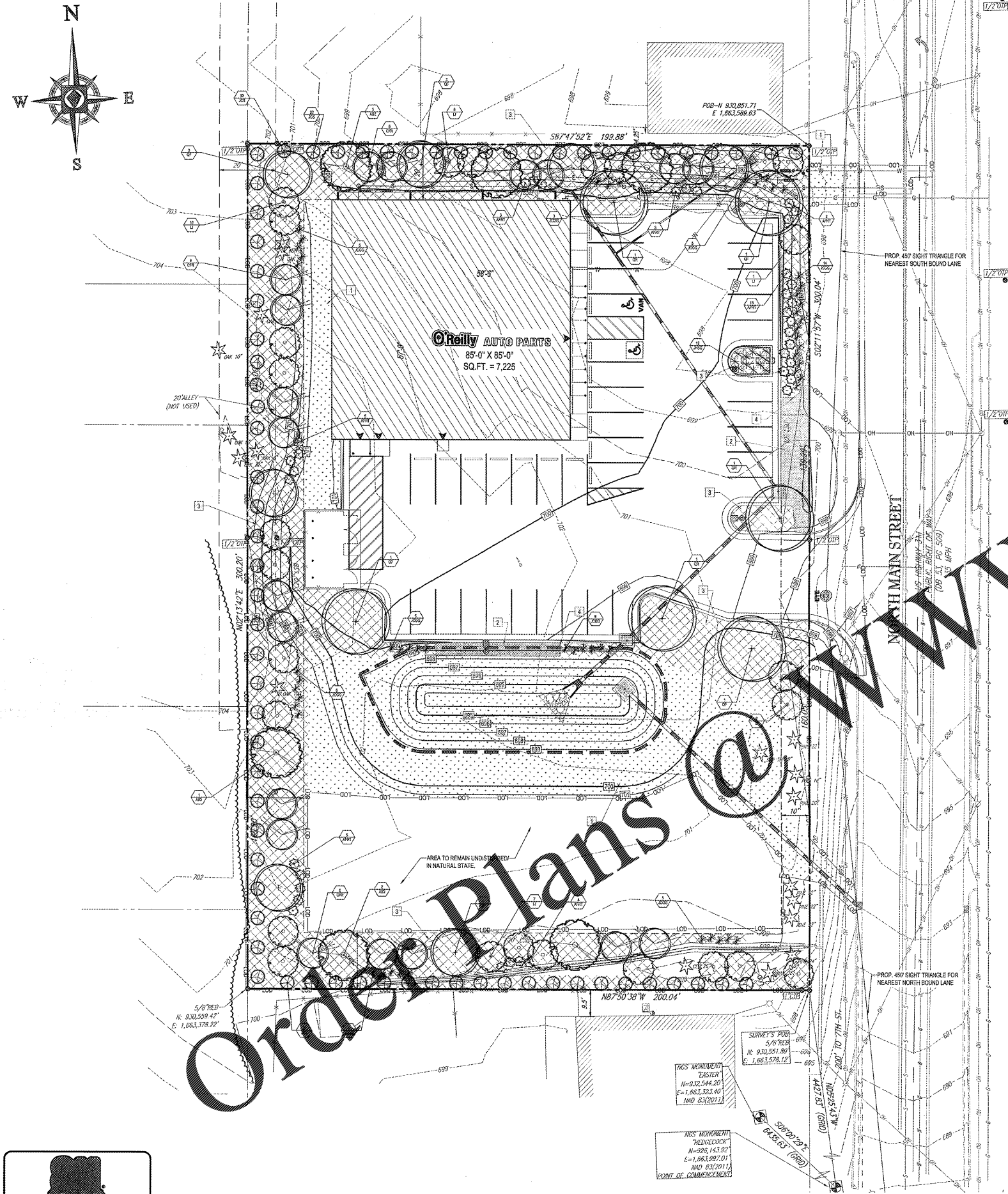


RECEIVED
MAR 22 2019
1736 EAST SUNSHINE ST. SUITE 417
SPRINGFIELD, MISSOURI



LANDSCAPE SCHEDULE

KEY	QTY.	BOTANICAL NAME	COMMON NAME	CAL.	CONT.
SINGLE TREE / CANOPY TREES					
01	10	QUERCUS BRANCO	SOUTHERN RED OAK	2 1/2" CAL.	B#8
02	3	QUERCUS ALBA	RED OAK	2 1/2" CAL. 12-14"	B#8
SUBTOTAL	13				
ORNAMENTAL TREES - MEDIUM / SMALL TREES					
03	6	AGROBUTYRACONIA	FOREST MARIE	1 1/2" CAL. 8-10"	B#8
04	10	CONIUS FLOREDA ALBA	PAW FLOWERING DOGWOOD	1 1/2" CAL. 8-10"	B#8
05	20	LADRIPROXIA WICKA	COMMON CORYMBELLE	1 1/2" CAL. 8-10"	B#8
SUBTOTAL	36				
DECIDUOUS SHRUBS					
06	30	CORNUS STOLONIFERA PARVIFL	ARCTIC PEE-EE TWO DOGWOOD	35-37"	S OAL
SUBTOTAL	30				
EVERGREEN SHRUBS / SCREENING PLANTS					
07	54	JANPERUS CHRYSEUS GOLD OLDY	GOLD OLDY JANNER	15-18" SPED.	#1 CAN
08	70	JANPERUS CHRYSEUS SPHARTM	SPHARTM JANNER	3-4"	B#8
SUBTOTAL	124				
GROUND COVERS					
09	12	JANPERUS HORIZONTALIS BLUE CHIP	BLUE CHIP CREEPING JANNER	3-4"	#1 CAN
SUBTOTAL	12				

LANDSCAPE BUFFER / YARD REQUIREMENT CHART

SECTION	REQUIREMENT	CALCULATIONS (REQUIRED/PROVIDED)	COMPLIANCE
FRONT LANDSCAPE AREA	1 CANOPY TREE, 2 MEDIUM TREES, AND 10 SHRUBS EVERY 10' ALONG PUBLIC RW	SHOWN ON PLANS	COMPLIES
PERMETR LANDSCAPE BUFFER	4 MEDIUM TREES, 8 SMALL TREES, 10 SCREENING PLANTS, AND 20 SHRUBS EVERY 10'	SHOWN ON PLANS	COMPLIES
PARKING LOT LANDSCAPING	1 TREE PER 10 PARKING SPACES	SHOWN ON PLANS	COMPLIES
PARKING LOT PERIMETER	2 CANOPY TREES AND 10 SHRUBS PER 100 LINEAR FEET	AS SHOWN ON PLANS	COMPLIES
DUMPSTER ENCLOSURE SCREENING	SCREEN DUMPSTER	AS SHOWN ON PLANS	COMPLIES
TYPE 'B' BUFFER NORTHERN PROPERTY LINE	3 CANOPY TREES, 5 UNDERSTORY TREES, AND 25 SHRUBS PER 100 LINEAR FEET	AS SHOWN ON PLANS	COMPLIES

LANDSCAPE BUFFER / BLUE COMPLIANCE CHART

PLANNING YARD	TYPE	LENGTH (FT)	CANOPY TREES REQUIRED	MEDIUM TREES REQUIRED	SMALL TREES REQUIRED	SCREENING PLANTS REQUIRED	SHRUBS REQUIRED
PARKING SCREENING NORTH	5' WIDE	80	2	-	-	-	7
PARKING SCREENING EAST	5' WIDE	101	2	-	-	-	10
PARKING SCREENING SOUTH	5' WIDE	103	2	-	-	-	11
BUFFER NORTH	20' WIDE	199.88	-	6	12	20	14
BUFFER WEST	20' WIDE	200.00	-	9*	18	30	21
BUFFER SOUTH	20' WIDE	200.04	-	9**	18	30	21
FRONT BUFFER AREA	10' WIDE	200.04	3	-	-	-	20

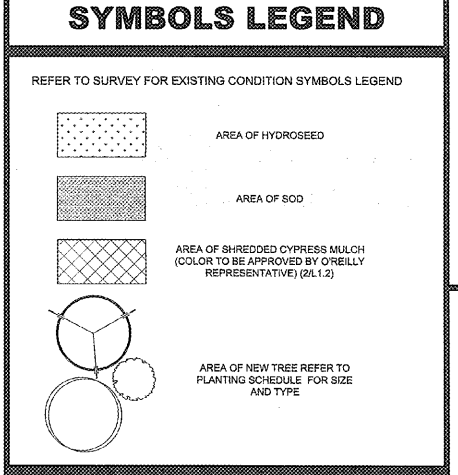
* (5) EXISTING TREES TO REMAIN TO COUNT TOWARDS REQUIREMENT
 ** (3) EXISTING TREES TO REMAIN TO COUNT TOWARDS REQUIREMENT
 *** (6) EXISTING TREES TO REMAIN TO COUNT TOWARDS REQUIREMENT

GENERAL NOTES

A REFER TO PROJECT MANUAL FOR ADDITIONAL REQUIREMENTS.
 B SITE CONDITIONS BASED UPON SURVEY PROVIDED BY OWNER. CONTRACTOR TO FIELD VERIFY EXISTING CONDITIONS BY DETAILED INSPECTION PRIOR TO SUBMITTING BID AND BEGINNING CONSTRUCTION. NOTIFY ARCHITECT IF EXISTING CONDITIONS DEVIATE SUBSTANTIALLY FROM THOSE INDICATED HEREIN.
 C REFER TO CIVIL DRAWINGS FOR ADDITIONAL REQUIREMENTS. COORDINATE WORK WITH OTHER SITE RELATED DEVELOPMENT DRAWINGS.
 D ALL PLANTING TYPES SHALL COMPLY WITH LOCAL GOVERNING CODES AND REGULATIONS. CONFORM TO REQUIREMENTS OF PLANT LIST AND TO THE AMERICAN ASSOCIATION OF NURSERYMEN 'AMERICAN STANDARD OF NURSERY STOCK' AND 'HORTICULTURAL STANDARDS' AS TO SPECIES, AGE, SIZE, AND PLANTING RECOMMENDATIONS.
 E NO MATERIAL SUBSTITUTIONS SHALL BE MADE WITHOUT THE ARCHITECT'S PRIOR WRITTEN APPROVAL. ALTERNATE MATERIALS OF SIMILAR SIZE AND CHARACTER MAY BE CONSIDERED IF SPECIFIED PLANT MATERIALS CANNOT BE OBTAINED.
 F PLANT LOCATION APPROXIMATE. ADJUST AS NECESSARY TO AVOID CONFLICTS.
 G QUANTITIES OF MATERIALS SHOWN ON LANDSCAPING PLAN TAKE PREFERENCE OVER QUANTITIES SHOWN ON PLANTING SCHEDULE. CONTRACTOR SHALL BE RESPONSIBLE FOR VERIFYING ALL QUANTITIES ON LANDSCAPING PLAN.
 H PROVIDE TOPSOIL AT ALL SOD, SEED AND PLANTING AREAS. GRADE SHALL BE ADJUSTED FOR SOD THICKNESS. REFER TO CIVIL SITE GRADING PLAN FOR SLOPE REQUIREMENTS.
 I UNDESIRABLE SOIL IS ENCOUNTERED IN THE ESTABLISHED OF THE LAWN OR THE INSTALLATION OF PLANT MATERIAL IT SHALL BE IMPROVED IN ACCORDANCE WITH STANDARD TRADE PRACTICE.
 J RE-ESTABLISH TURF IN AREAS DISTURBED BY GRADING OR UTILITY TRENCHING IN THE RIGHT-OF-WAY.
 K PRIOR TO INSTALLATION, GENERAL CONTRACTOR TO CONFIRM THAT LIGHT POLES, LANDSCAPING AND UTILITIES DO NOT CONFLICT WITH SIGN LOCATION SHOWN. IF ANY POTENTIAL CONFLICT IS DISCOVERED, GENERAL CONTRACTOR IS TO CONTACT OWNER'S REPRESENTATIVE BEFORE PROCEEDING WITH THE WORK.
 L NO PLANTING SHALL BE PLACED WITHIN SIGHT TRIANGLES AT A HEIGHT BETWEEN 2'-8" AND 10' (CANOPY) ABOVE THE FINISHED GRADE OF THE PROPOSED DRIVEWAY

KEY NOTES

1 AREA OF HYDROSEED AND STRAW UNLESS NOTED OTHERWISE, ALL AREAS DISTURBED BY CONSTRUCTION ARE FIRST TO BE FINE GRADED AND THEN FOLLOWED BY HYDROSEED AND STRAW OVER MIN. 4" TOPSOIL STOCKPILED FROM SITE OR HAULED IN AS REQUIRED.
 2 AREA OF SOD
 3 CYPRESS MULCH, REFER TO DETAIL 2/L.1.2
 4 LANDSCAPE EDGING, PROVIDE AT ALL GROUND COVER TYPE TRANSITIONS.

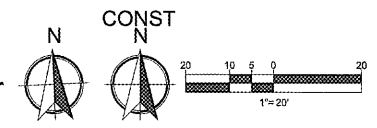


PLAN REFERENCES

- REFER TO LANDSCAPE NOTES AND DETAILS SHEET FOR LANDSCAPE NOTES
- THIS PLAN TO BE UTILIZED FOR SITE LANDSCAPE PURPOSES ONLY

KNOW WHAT'S BELOW
ALWAYS CALL 811
BEFORE YOU DIG
It's fast. It's free. It's the law.

1 LANDSCAPE PLAN
L.1.1 SCALE: 1" = 20'



SITE CONDITIONS BASED UPON SURVEY PROVIDED BY OWNER. CONTRACTOR TO FIELD VERIFY EXISTING CONDITIONS BY DETAILED INSPECTION PRIOR TO SUBMITTING BID AND BEGINNING CONSTRUCTION. NOTIFY ARCHITECT IF EXISTING CONDITIONS DEVIATE SUBSTANTIALLY FROM THOSE INDICATED HEREIN.

BOHLER ENGINEERING NC, PLLC
 4130 PARK AVE AVENUE, SUITE 150 RALEIGH, NC 27612
 PHONE: 919.883.8300 FAX: 919.883.8200

PROJECT No.: NCR182158 SCALE: 1"=20'
 DRAWN BY / CHECKED BY: CB/WLB CAD I.D.: NCR182158-LSP-0

CRAIG A. SCHNEIDER, AIA
 ARCHITECT
 1736 East Sunshine, Suite 417
 Springfield, Missouri 65804
 417.862.0558
 Fax: 417.862.3265
 e-mail: architect@estheticschneider.com

PROJECT:
NEW O'REILLY AUTO PARTS STORE
 N. MAIN ST.
 WALNUT COVE, NC

O'Reilly AUTO PARTS
 CORPORATE OFFICES
 233 SOUTH PATTERSON
 SPRINGFIELD, MISSOURI 65802
 (417) 862-2674 TELEPHONE

COMM # 4300
 DATE: 3-22-19
 REVISION DATE:
 REVISION DATE:
 REVISION DATE:

L.1.1