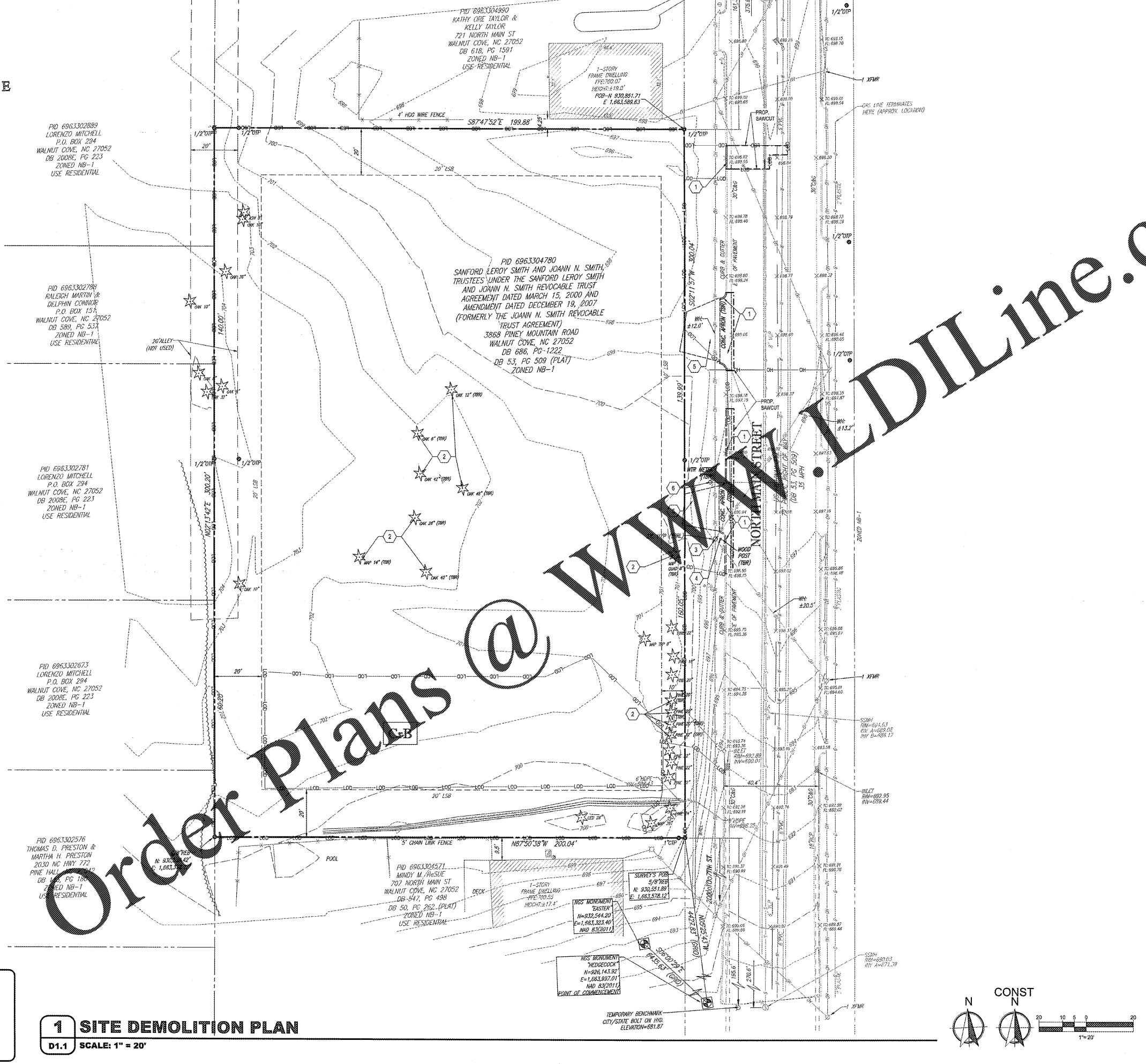


RECEIVED
MAR 22 2019
1206 E SUNSHINE ST. SUITE 417
SPRINGFIELD, MO



1 SITE DEMOLITION PLAN

D1.1 SCALE: 1" = 20'

**KNOW WHAT'S BELOW
ALWAYS CALL 811
BEFORE YOU DIG**
It's fast. It's free. It's the law.

GENERAL NOTES

- REFER TO PROJECT MANUAL FOR ADDITIONAL REQUIREMENTS.
- SITE CONDITIONS BASED UPON SURVEY PROVIDED BY OWNER. FIELD VERIFY EXISTING CONDITIONS BY DETAILED INSPECTION PRIOR TO SUBMITTING BID AND BEGINNING CONSTRUCTION. NOTIFY ARCHITECT IF EXISTING CONDITIONS DEVIATE SUBSTANTIALLY FROM THOSE INDICATED HEREIN.
- REMOVE ALL EXISTING SITE CONSTRUCTION AND DELETERIOUS MATERIALS UNLESS OTHERWISE NOTED.
- EXISTING CONSTRUCTION TO REMAIN TO BE PROTECTED AS REQUIRED. REPLACE AND/OR REPAIR EXISTING CONSTRUCTION DAMAGED DUE TO CONTRACTOR ACTIVITIES.
- ALL DEMOLITION MATERIALS SHALL BECOME PROPERTY OF CONTRACTOR FOR PROPER DISPOSAL UNLESS OTHERWISE NOTED.
- REFER TO SITE UTILITY PLAN FOR DEMOLITION OF EXISTING UTILITIES.
- EXISTING UNDERGROUND UTILIZATION SUCH AS WATER MAINS, GAS MAINS, SEWERS, TELEPHONE LINES, POWER LINES, AND BURIED STRUCTURES IN THE VICINITY OF THE WORK ARE INDICATED ON THE DRAWINGS ONLY TO THE EXTENT SUCH INFORMATION HAS BEEN MADE AVAILABLE TO THE ARCHITECT. THE ARCHITECT'S RESPONSIBILITY FOR COMPLETION OF SUCH INFORMATION AND ALL RESPONSIBILITY FOR THE ACCURACY AND COMPLETENESS IS EXPRESSLY DISCLAIMED. GENERALLY CONTRACTORS SHALL BE RESPONSIBLE FOR DISCOVERY OF EXISTING UNDERGROUND UTILITIES IN ADVANCE OF EXCAVATING OR TRENCHING BY CONTRACTING LOCAL UTILITIES.

KEY NOTES

- EXISTING CURB AND PAVEMENT TO BE REMOVED PER CITY/STATE DESIGN STANDARDS, AS REQUIRED FOR INSTALLATION OF NEW CONSTRUCTION.
- EXISTING TREES, BUSH, PLANTINGS, AND DEBRIS TO BE REMOVED TO PROPERTY LINES.
- EXISTING UTILITY POLE TO BE RELOCATED. CONTRACTOR TO COORDINATE WITH ELECTRIC PROVIDER.
- EXISTING WOOD POST TO BE REMOVED.
- EXISTING GRAVEL PAVEMENT TO BE REMOVED.
- EXISTING 3/4" WATER LATERAL TO BE CAPPED AND ABANDONED. CONTRACTOR TO COORDINATE EXISTING METER REMOVAL.

ENVIRONMENTAL GENERAL NOTES

- AN ENVIRONMENTAL ANALYSIS HAS BEEN PERFORMED ON THE EXISTING SITE. REFER TO PROJECT MANUAL.
- IF THIS PROJECT CONTAINS HAZARDOUS MATERIALS, CONTRACTOR TO PROVIDE WORK REQUIRED FOR PROPER REMOVAL, HANDLING, AND DISPOSAL PER ENVIRONMENTAL ANALYSIS RECOMMENDATIONS.

SYMBOLS LEGEND

REFER TO SURVEY FOR EXISTING CONDITION SYMBOLS LEGEND

---	EXISTING ITEMS TO BE REMOVED
---	SAWCUT
---	LIMITS OF DISTURBANCE
---	TREE PROTECTION FENCE
(TBR)	TO BE REMOVED
(TBR)	TO BE RELOCATED

PLAN REFERENCES

- REFER TO GENERAL NOTES SHEET FOR DEMOLITION NOTES
- THIS PLAN TO BE UTILIZED FOR SITE DEMOLITION/REMOVAL PURPOSES ONLY

BOHLER ENGINEERING NC, PLLC
NCELS P-112
4130 PARLAK AVENUE, SUITE 103 RALEIGH, NC 27612
PHONE: (919) 949-6600 FAX: (919) 949-2828

CRAIG A. SCHNEIDER, AIA
ARCHITECT

417.862.8558
417.862.8265
1736 East Sunshine, Suite 417
Springfield, Missouri 65804
e-mail: architect@estheticschneider.com

PROJECT: **NEW O'REILLY AUTO PARTS STORE**
N. MAIN ST.
WALNUT COVE, NC

O'Reilly AUTO PARTS
CORPORATE OFFICES
233 SOUTH PATTERSON
SPRINGFIELD, MISSOURI 65802
(417) 862-2074 TELEPHONE

COMM # 4300
DATE: 3-22-19
REVISION DATE:
REVISION DATE:

PROJECT No.: NCR182158 SCALE: 1" = 20'
DRAWN BY / CHECKED BY: CB/WLB CAD I.D.: NCR182158-SSP-0

D1.1