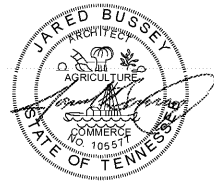
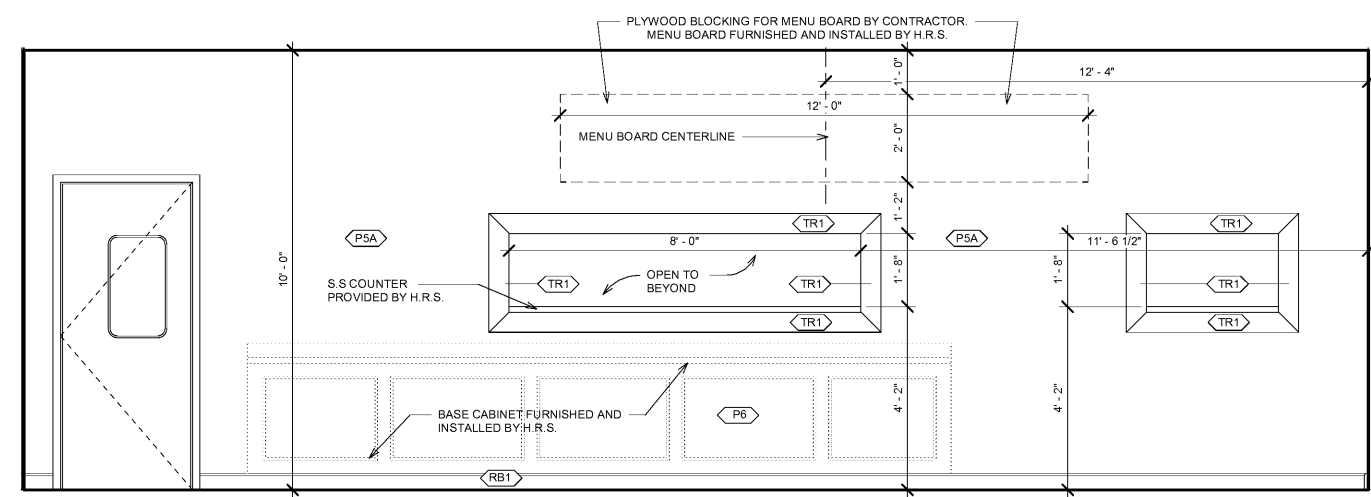




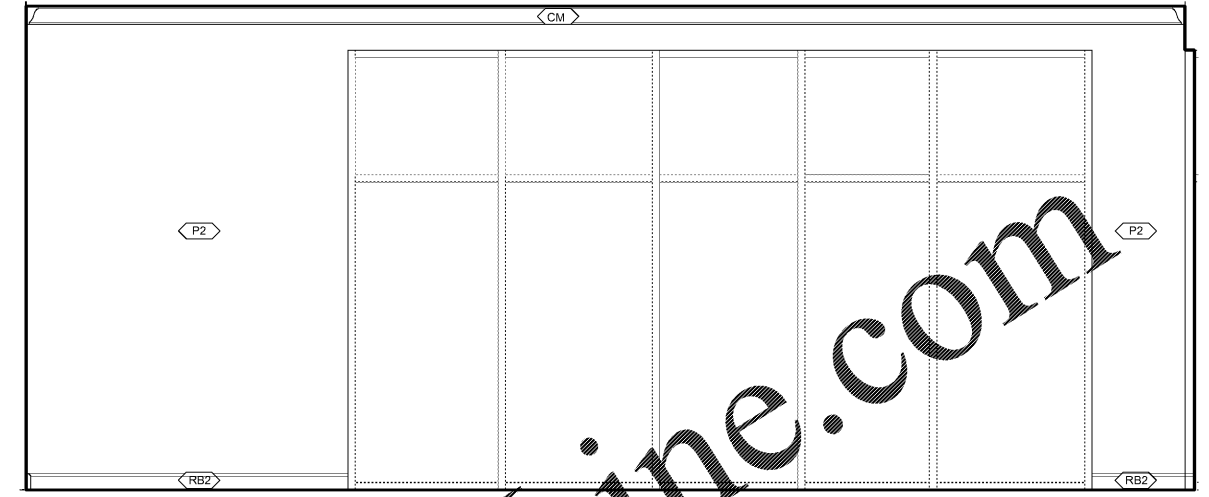
1604 28th Ave South  
Birmingham, AL 35209  
205.533.3563



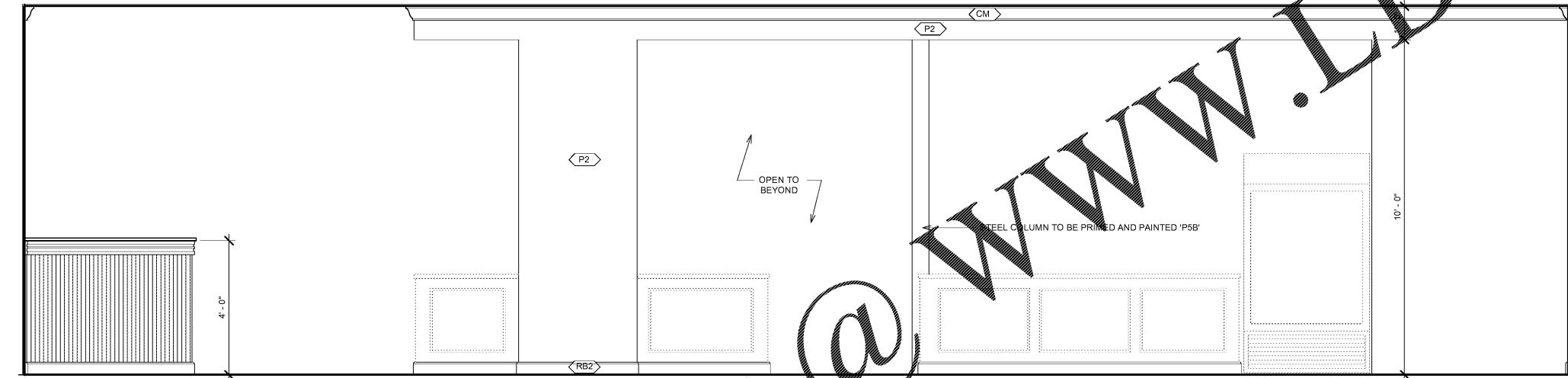
Chicken Salad Chick  
Cleveland, Tennessee  
Bradley Square Mall, Building H  
200 Paul Huff Parkway NW  
Cleveland, Tennessee 37312



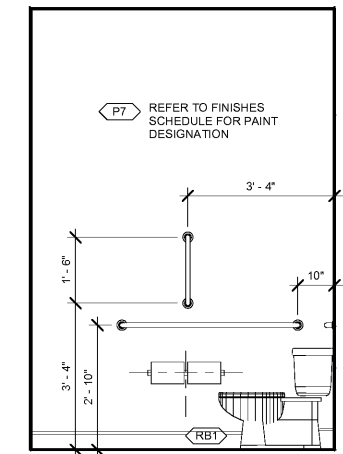
1 Interior Elevation - Point of Sale Back  
1/2" = 1'-0"



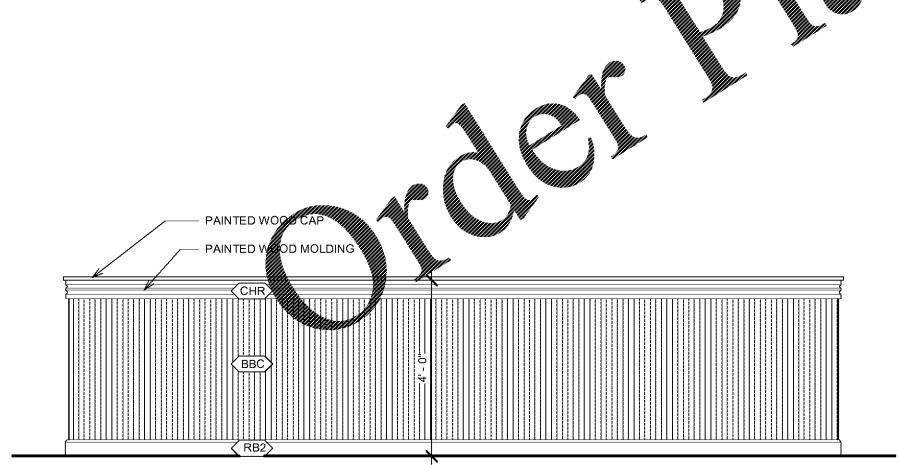
2 Interior Elevation - Queue Wall  
1/2" = 1'-0"



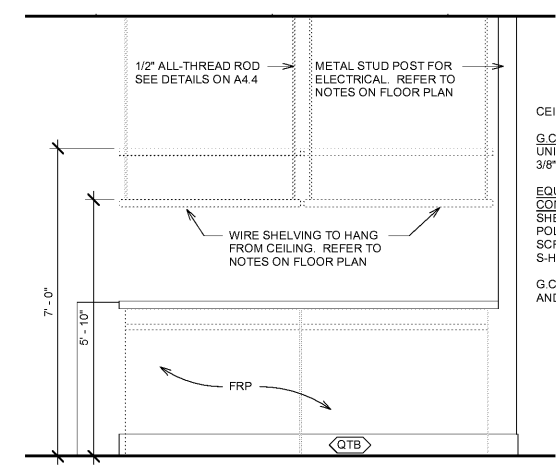
3 Interior Elevation - Point of Sale  
1/2" = 1'-0"



8 Bathroom Elevation C  
1/2" = 1'-0"



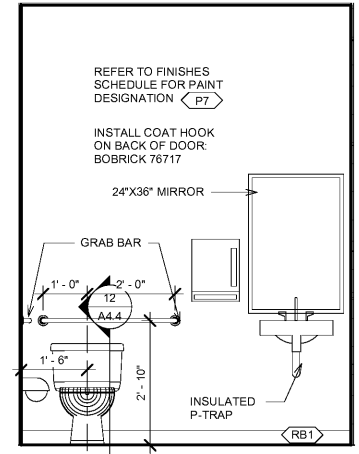
5 Interior Elevation - Dining C-Wall  
1/2" = 1'-0"



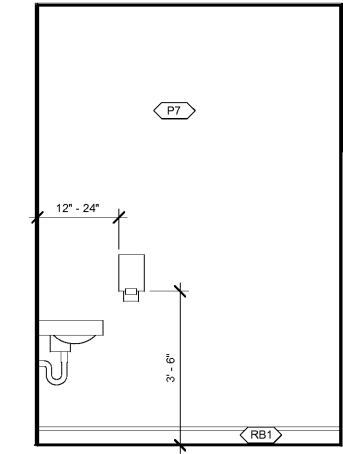
4 Interior Elevation - Kitchen Wall  
1/2" = 1'-0"

CEILING HUNG SHELVING NOTES  
G.C. TO PROVIDE ANCHORING SUPPORT:  
UNISTRUT  
3/8" ALL-THREAD  
EQUIPMENT VENDOR WILL PROVIDE SHELVING COMPONENTS:  
SHELVES AND CLIPS  
POLES TO COVER ALL-THREAD  
SCREWS  
S-HOOKS TO FASTEN SHELVES TOGETHER  
G.C. RESPONSIBLE FOR RUNNING ALL-THREAD AND SETTING SHELVES IN PLACE

TOILET ACCESSORY NOTE:  
MIRROR, ROBE HOOK, PAPER TOWEL, TOILET TISSUE, AND SOAP DISPENSERS ARE OWNER FURNISHED/CONTRACTOR INSTALLED



6 Bathroom Elevation A  
1/2" = 1'-0"



7 Bathroom Elevation B  
1/2" = 1'-0"

Order Plans @ www.LDILine.com

No.	Revision	Date

Client:  
J. Hudson Sandefur  
Project Location:  
200 Paul Huff Pkwy NW  
Cleveland, Tennessee  
37312

DATE: July 19, 2019  
DRAWING TITLE: Interior Elevations  
PROJECT NUMBER: 31-19  
FILE NUMBER: 31-19 CSC Cleveland.rvt  
SHEET of  
DRAWING NUMBER

A4.1