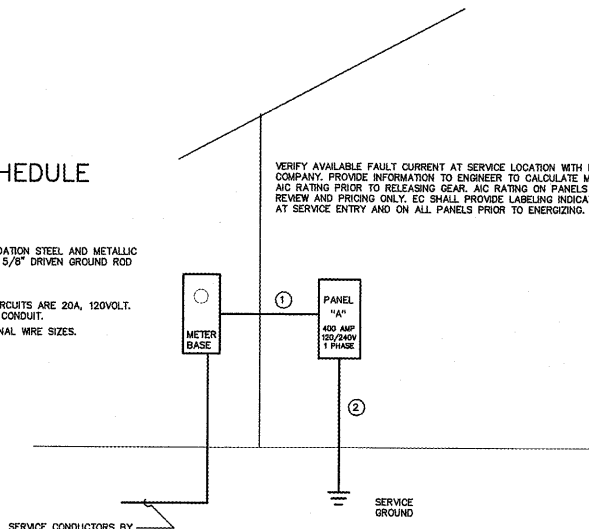


Order Plans @ www.ltdi.com

RISER WIRING SCHEDULE

- ① 400A: 2-#600MCM IN 2-1/2" CONDUIT
 - ② #3A CU GND TO BUILDING STEEL, FOUNDATION STEEL, AND METALLIC WATER MAIN AND #6 CU GND TO 10' X 5/8" DRIVEN GROUND ROD
- NOTE:
UNLESS OTHERWISE NOTED ALL OTHER CIRCUITS ARE 20A, 120VOLT.
PROVIDE 2-#12, 1-#12 CU GND IN 1/2" CONDUIT.
SEE EQUIPMENT SCHEDULES FOR ADDITIONAL WIRE SIZES.



① **ELECTRIC SERVICE RISER**
SCALE: NOT TO SCALE

VERIFY AVAILABLE FAULT CURRENT AT SERVICE LOCATION WITH LOCAL POWER COMPANY. PROVIDE INFORMATION TO ENGINEER TO CALCULATE MINIMUM PANEL AIC RATING PRIOR TO RELEASING GEAR. AIC RATING ON PANELS ARE FOR PERMIT REVIEW AND PRICING ONLY. EC SHALL PROVIDE LABELING INDICATING FAULT CURRENT AT SERVICE ENTRY AND ON ALL PANELS PRIOR TO ENERGIZING.

Supp Form E4
NEW PANEL - 'A'

LOAD SERVICE	CKT BRKR	WATTS PER PHASE		CKT NO	NEUTRAL			CKT NO	WATTS PER PHASE		CKT BRKR	LOAD SERVICE
		A	B		A	B	A		B			
LTS - RESTROOM	20A	1296		1			2	900		20A	REC	
LTS - RESTROOM	20A		1168	3			4		540	20A	REC	
LTS - KITCHEN	20A	1088		5			6	540		20A	REC	
LTS - PICNIC	20A		768	7			8		540	20A	REC	
LTS - EXT	20A	544		9			10	1884		20A	WH-1	
GRF FAN	20A		1200	11			12		1884	20A	WH-2	
GRF FAN	20A	1200		13			14	1104		20A	REACH-IN REFRIG	
GRF FAN	20A		1200	15			16		1280	20A	REACH-IN FREEZER	
GRF FAN	20A	1200		17			18	2004		20A	HEATED CABINET	
DHP-1	20A		1560	19			20		4000	50A	RANGE	
DHP-2	20A	1560		21			22	4000		20A	EMH-1	
DHP-3	20A	1776		23			24		1650	20A	EMH-2	
REC	20A		1560	25			26		9000	100A	WH-3	
REC	20A	360		27			28		9000	20A	RPZ HOSE BOX	
REC	20A	360		29			30		500	20A	LAV STATION	
REC	20A	360		31			32		500	20A	LAV STATION	
REC	20A	360		33			34		500	20A	LAV STATION	
REC	20A	360		35			36		500	20A	LAV STATION	
REC	20A	360		37			38		500	20A	LAV STATION	
LTS - PERMETER CANS	20A		374	39			40		100	20A	LAV STATION	
REC - MTP	20A	360		41			42			20A	SPARE	
SUB-TOTALS 'A'		11308		10328			22082	20374				
SUB-TOTALS 'B'							1308	10328				
GRAND TOTAL							3388	30702				TOTAL CONNECTED LOAD
NEC ALLOWABLE DEMAND FACTORS							278A	258A				

NOTES

① DEMAND FACTORS PER NEC TABLE 220.51
② LARGEST OF: NEC TABLE 220.51 OR CONNECTED LOAD
③ NEC TABLE 220.55
④ NEC 220.51
⑤ NEC 220.51
⑥ NON-COINCIDENTAL LOADS, LARGEST OF THE TWO LOADS' COLUMN

LOAD TYPE	DEMAND FACTOR	A	B	TOTAL DIVERSIFIED LOAD
GENERAL LIGHTING	125%	3680	2888	6568
TRACK LIGHTS	125%			
GENERAL USE RECEPTACLES	100%	2520	1800	4320
APPLIANCES AND EQUIPMENT	100%	2223	2223	4446
WATER HEATERS	125%	13315	13313	26628
KITCHEN EQUIPMENT	85%	8042	4471	12513
FIX. ELEC. SPACE HEAT.	100%	1884	1884	3768
SHOW WINDOW LIGHTS	125%			
SIGN	125%	1000	1500	2500
MISC	100%			
PHASE (TOTAL VA)		36162	33589	69751
TOTAL AMPS		301A	280A	291A

EQUIPMENT WIRING SCHEDULE

EQUIPMENT	MCA	MOCV	VOLTS	PH	WIRE SIZE
DHP-1	15.0A	20A	240V	1	3-#12, 1-#12 GND IN 1/2" CONDUIT
DHP-2	17.1A	20A	240V	1	3-#12, 1-#12 GND IN 1/2" CONDUIT
DHP-3	15.0A	20A	240V	1	3-#12, 1-#12 GND IN 1/2" CONDUIT
EMH-1	13.8A	20A	120V	1	2-#12, 1-#12 GND IN 1/2" CONDUIT
EMH-2	13.8A	20A	120V	1	2-#12, 1-#12 GND IN 1/2" CONDUIT
EMH-3	88.5A	100A	240V	1	3-#3, 1-#8 GND IN 1-1/4" CONDUIT
WH-1	15.7A	20A	120V	1	2-#12, 1-#12 GND IN 1/2" CONDUIT
WH-2	15.7A	20A	120V	1	2-#12, 1-#12 GND IN 1/2" CONDUIT
REACH-IN REFRIGERATOR	9.2A	20A	120V	1	2-#12, 1-#12 GND IN 1/2" CONDUIT
REACH-IN FREEZER	10.5A	20A	120V	1	2-#12, 1-#12 GND IN 1/2" CONDUIT
MOBILE HEATED CABINET	16.7A	20A	120V	1	2-#12, 1-#12 GND IN 1/2" CONDUIT
RANGE	38.5A	50A	208V	1	3-#3, 1-#8 GND IN 1-1/4" CONDUIT

NOTE:
THE ELECTRICAL CONTRACTOR SHALL VERIFY ALL EQUIPMENT ELECTRICAL REQUIREMENTS PRIOR TO ROUGH-IN AND RELEASING GEAR. ADJUST BREAKER, WIRE SIZES, ETC. AS REQUIRED.

WEEKS TURNER ARCHITECTURE

WEEKS TURNER ARCHITECTURE, PA
3305-109 Durham Drive
Raleigh, North Carolina 27603
919.779.9797 fax: 919.779.0826
www.weeksturner.com

ENGINEER
BURKE DESIGN GROUP, P.C.
CONSULTING ENGINEERS
3305-109 Durham Drive
Raleigh, North Carolina 27603
919.771.1916 fax: 919.779.0826
email: benburke@nc.rr.com
Corp. License # C-2652



PROJECT TITLE
**SUGG FARM
PICNIC SHELTER**
2401 GRIGSBY AVE.
HOLLY SPRINGS, NORTH CAROLINA

PROJECT NO.
1732
DRAWING TITLE
PANELS & RISER

E:4

PLOT DATE 4/9/18
REVISION 11/27/18
TOWN COMMENTS 12/17/18
OWNER COMMENTS 4/6/19

This original sheet is 24" x 36"; other dimensions indicate it has been altered.
All information on this sheet is the property of Weeks Turner Architecture and may not be duplicated in whole or in part without written authorization from Weeks Turner Architecture. 2017