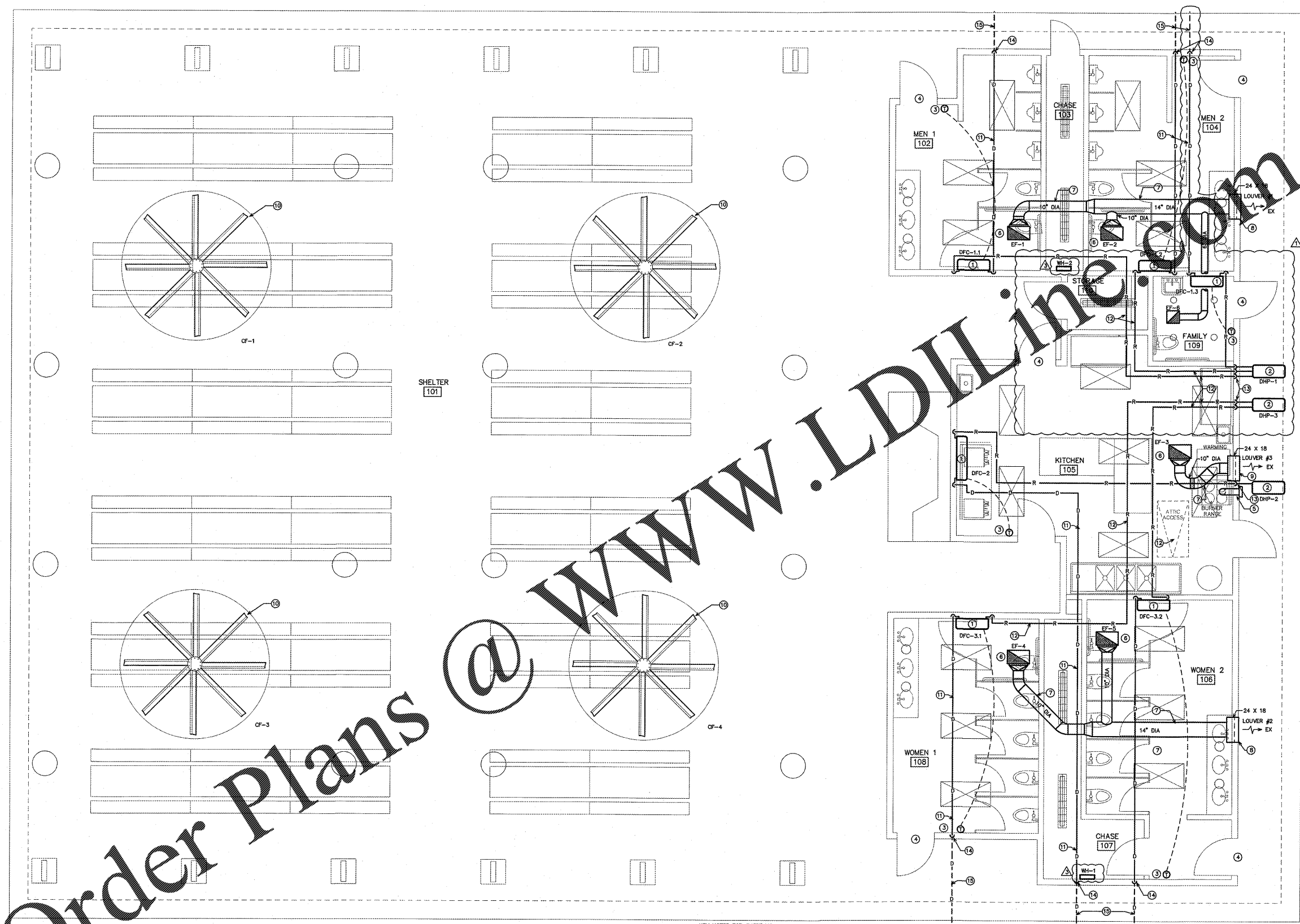




4/9/19



Order Plans @ [www.LDOnline.com](http://www.LDOnline.com)

**1 HVAC PLAN**  
SCALE: 1/4" = 1'-0"

- KEY NOTES FOR SHEET M2
- ① DUCTLESS SPLIT SYSTEM FAN-COIL UNIT MOUNTED ON WALL WITH TOP AT 12" BELOW CEILING.
  - ② DUCTLESS SPLIT SYSTEM OUTDOOR HEAT PUMP UNIT MOUNTED ON CONCRETE PAD.
  - ③ MOUNT THERMOSTAT AT 48" AFF.
  - ④ GENERAL CONTRACTOR SHALL PROVIDE LOUVER IN DOOR FOR EXHAUST MAKE-UP AIR.
  - ⑤ 6" DIA. RIGID STEEL EXHAUST DUCT AND WALL CAP FOR RANGE EXHAUST HOOD.
  - ⑥ CEILING CABINET EXHAUST FAN.
  - ⑦ RUN DUCTWORK IN ATTIC SPACE.
  - ⑧ 24" X 18" EXHAUST LOUVER. LOUVER SHALL BE EQUAL TO CARNES MODEL FND-C. LOUVER #1 AND LOUVER #2 SHALL BE EQUAL DISTANCE FROM THE CENTER OF THE BUILDING. LOUVER COLOR SELECTED BY ARCHITECT.
  - ⑨ 24" X 18" EXHAUST LOUVER. LOUVER SHALL BE EQUAL TO CARNES MODEL FND-C. THIS LOUVER SHALL BE CENTERED ON BUILDING. LOUVER COLOR SHALL BE SELECTED BY ARCHITECT.
  - ⑩ AIR CIRCULATION FAN. SUSPEND FROM STRUCTURAL BEAM ABOVE PER FAN MANUFACTURER'S INSTRUCTIONS. ENTIRE FAN INSTALLATION SHALL BE PER FAN MANUFACTURER'S INSTRUCTIONS.
  - ⑪ RUN PUMPED CONDENSATE PIPING CONCEALED IN ATTIC. (TYPICAL).
  - ⑫ RUN REFRIGERANT PIPING CONCEALED IN ATTIC SPACE. (TYPICAL).
  - ⑬ RUN REFRIGERANT PIPING DOWN CONCEALED IN EXTERIOR WALL.
  - ⑭ RUN CONDENSATE PIPING DOWN CONCEALED IN EXTERIOR WALL TO BELOW FLOOR SLAB. PROVIDE INSECT SCREEN OVER OPEN END OF PIPE.
  - ⑮ RUN CONDENSATE PIPING WITH-IN SLAB AND TERMINATE AT EXPOSED EDGE OF SLAB. PROVIDE INSECT SCREEN OVER OPEN END OF PIPE.
  - ⑯ ELECTRIC WALL HEATER. MOUNT WITH BOTTOM AT 8" AFF.

PROJECT TITLE  
**SUGG FARM  
PICNIC SHELTER**  
2401 GRIGSBY AVE.  
HOLLY SPRINGS, NORTH CAROLINA

PROJECT NO.  
**1732**  
DRAWING TITLE  
**HVAC PLAN**

M2

PLOT DATE 3/25/18  
REVISION 11/27/18  
TOWN COMMENTS 12/17/18  
OWNER COMMENTS 4/6/19

This original sheet is 24" x 36", other dimensions indicate it has been altered.  
All information on this sheet is the property of Weeks Turner Architecture and may not be duplicated in whole or in part without written authorization from Weeks Turner Architecture, 2017.