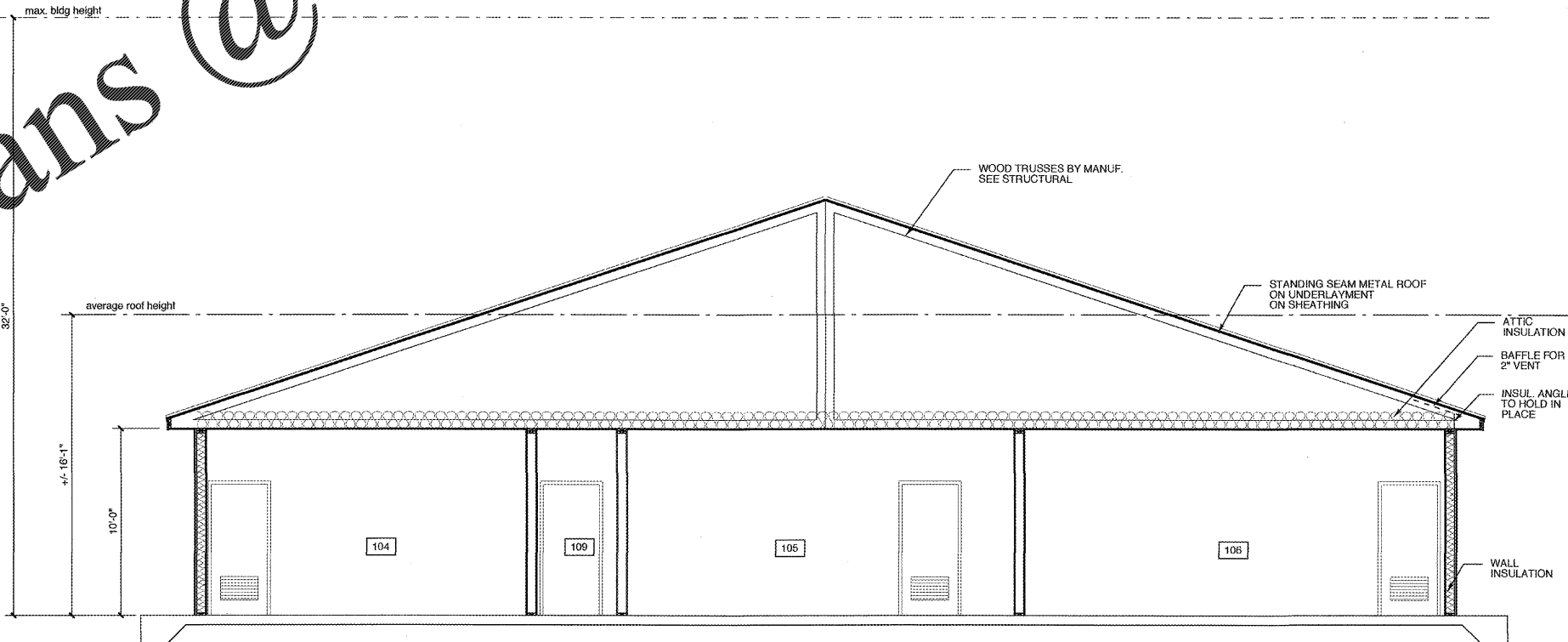


2 FIREPLACE/CHIMNEY SECTION
SCALE: 3/4" = 1'-0"

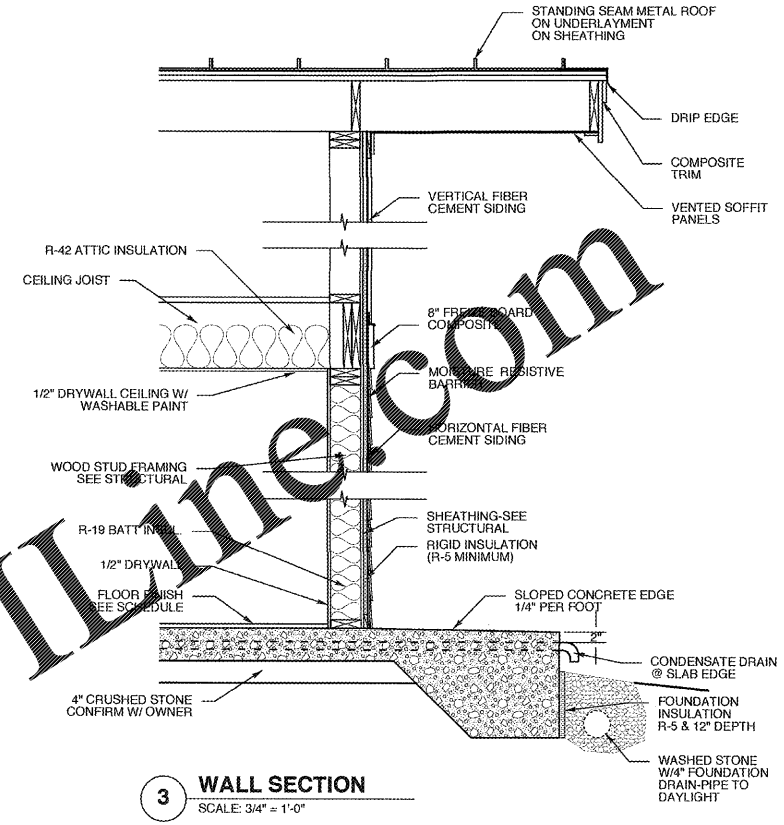


1 BUILDING SECTION
SCALE: 1/4" = 1'-0"

TABLE 2111.1
SUMMARY OF REQUIREMENTS FOR MASONRY FIREPLACES AND CHIMNEYS*

ITEM	LETTER	REQUIREMENTS	SECTION
Hearth and hearth extension thickness	A	4-inch minimum thickness for hearth, 2-inch minimum thickness for hearth extension.	2111.9
Hearth extension (each side of opening)	B	8 inches for fireplace opening less than 6 square feet, 12 inches for fireplace opening greater than or equal to 6 square feet.	2111.10
Hearth extension (front of opening)	C	16 inches for fireplace opening less than 6 square feet, 20 inches for fireplace opening greater than or equal to 6 square feet.	2111.10
Firebox dimensions	—	30-inch minimum firebox depth, 12-inch minimum firebox depth for Barford fireplaces.	2111.6
Hearth and hearth extension reinforcing	D	Reinforced to carry its own weight and all imposed loads.	2111.9
Thickness of wall of firebox	E	10 inches solid masonry or 8 inches where firebrick lining is used.	2111.5
Distance from top of opening to throat	F	8 inches minimum.	2111.7.1, 2111.7.1
Smoke chamber wall thickness dimensions	G	6 inches lined, 8 inches unlined. Not taller from opening width; walls not inclined more than 45 degrees from vertical for prefabricated smoke chamber linings or 30 degrees from vertical for corbelled masonry.	2111.8
Chimney vertical reinforcing	H	Four No. 4 full-length bars for chimney up to 40 inches wide. Add two No. 4 bars for each additional 40 inches or fraction of width, or for each additional five.	2111.3.1, 2113.3.1
Chimney horizontal reinforcing	I	1/4-inch ties at each 18 inches, and two ties at each bend in vertical steel.	2111.3.2, 2113.3.2
Fireplace lintel	L	Noncombustible material with 4-inch bearing length of each side of opening.	2111.7
Chimney walls with flue lining	M	4-inch-thick solid masonry with 1/2-inch fireclay liner or equivalent, 1/2-inch space or airspace between fireclay liner and wall.	2113.11.1
Effective flue area (based on area of fireplace opening and chimney)	P	See Section 2113.16.	2113.16
Clearances	—	From chimney: From fireplace: From combustible trim or materials: Above roof	2113.19, 2111.11, 2111.12, 2113.9
Anchorage strap	S	1/2-inch by 1-inch Two 12 inches hooked around outer bar with 6-inch extension. Fasten to Four 1/2-inch diameter.	2111.4, 2113.4.1
Exiting	—	Thickness: Width:	2111.2, 2111.2

Fig. S1: 1 inch = 24.4 mm, 1 foot = 304.8 mm, 1 square foot = 0.0929 m², 1 degree = 0.017 rad.
*This table provides a summary of major requirements for the construction of masonry chimneys and fireplaces. Letter references are to Figure 2111.1, which shows examples of typical construction. This table does not cover all requirements, nor does it cover all aspects of the indicated requirements. For the actual masonry requirements of the code, see the indicated section of text.



3 WALL SECTION
SCALE: 3/4" = 1'-0"

SEE STRUCTURAL FOR FOUNDATION AND FRAMING INFORMATION

WEEKS TURNER ARCHITECTURE

WEEKS TURNER ARCHITECTURE, PA
3305-109 Durham Drive
Raleigh, North Carolina 27603
919.779.9787
www.weeksturner.com

BNK
BASS, NIXON & KENNEDY, INC.
CONSULTING ENGINEERS
6310 Chapel Hill Road
Suite 250
Raleigh, NC 27607

919.851.4422 919.851.8968 fax
Cert. No.'s NCBELS (C-0110)
NCBOLA (C-0267)



FOR PERMIT PROCESS ONLY

PROJECT TITLE
SUGG FARM PICNIC SHELTER
2401 GRIGSBY AVE.
HOLLY SPRINGS, NORTH CAROLINA

PROJECT NO.
1732
DRAWING TITLE
SECTIONS

SHEET 5 OF 7

A3

PLOT DATE 4/8/19
REVISION 11/27/18
12/19/18

This original sheet is 24" x 36"; other dimensions indicate if has been altered.
All information on this sheet is the property of Weeks Turner Architecture and may not be duplicated in whole or in part without written authorization from Weeks Turner Architecture, 2008 ©