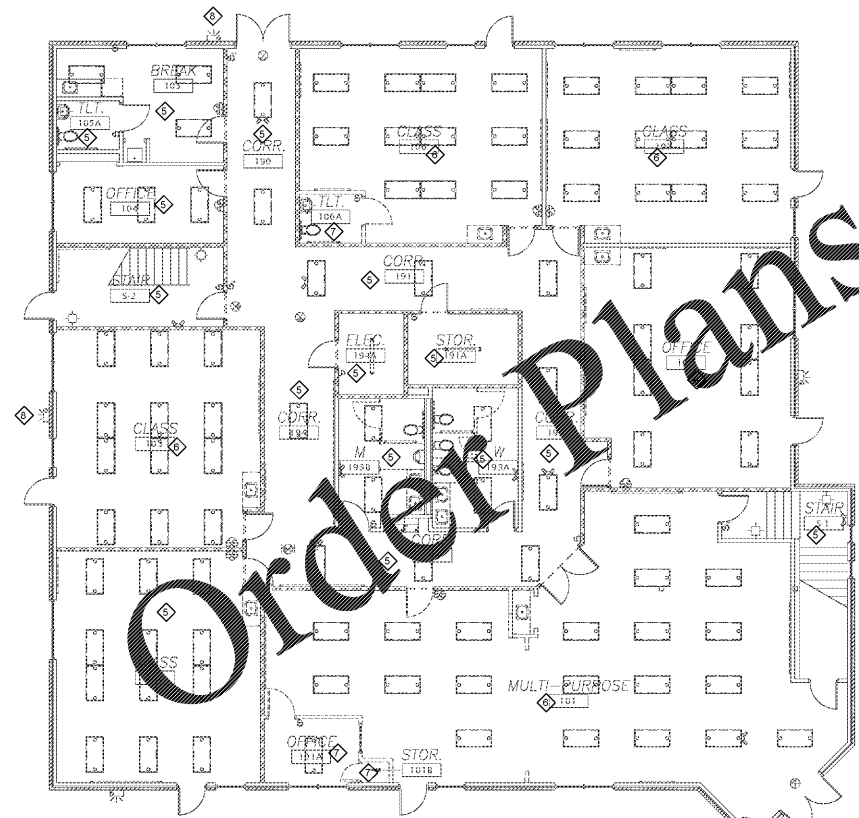


**3 UPPER LEVEL - ELECTRICAL LIGHTING DEMOLITION PLAN**  
E201  
SCALE: 1/8"=1'-0"



**1 LOWER LEVEL - ELECTRICAL LIGHTING DEMOLITION PLAN**  
E201  
SCALE: 1/8"=1'-0"

- GENERAL NOTES FOR ELECTRICAL DEMOLITION**
- FIELD VERIFY ALL EXISTING CONDITIONS AND NOTIFY ARCHITECT OF ANY DISCREPANCIES ON DRAWINGS.
  - UNLESS OTHERWISE NOTED, THE OWNER RETAINS THE RIGHT TO RETAIN ALL ITEMS AND/OR MATERIALS IN GOOD CONDITION FOLLOWING REMOVAL AND/OR DEMOLITION. OTHERWISE, THE CONSTRUCTION MANAGER SHALL DISPOSE OF ALL OTHER ITEMS AND MATERIALS IN A LEGAL FASHION.
  - IF ANY ASBESTOS-CONTAINING MATERIAL IS SUSPECTED, G.C. SHALL STOP DEMOLITION AND CONTACT THE OWNER'S REPRESENTATIVE IMMEDIATELY. THE OWNER SHALL CONTRACT WITH AN ASBESTOS ABATEMENT CONTRACTOR UNDER A SEPARATE CONTRACT FOR THE REMOVAL OF ALL EXISTING ASBESTOS-CONTAINING MATERIAL, SHOULD ANY BE ENCOUNTERED.
  - FOR WALL MOUNTED DEVICES, (TYPICALLY RECEPTACLES, DATA/TV OUTLETS & LIGHT SWITCHES) UNLESS SPECIFICALLY IDENTIFIED BY DEMOLITION NOTE, WALL MOUNTED DEVICES ARE TO REMAIN UNLESS NOTED. RETAIN REMOVED DEVICES AND CLEAN, REPAIR OR REPLACE FOR RE-USE AS IS PRACTICAL.
  - FOR CEILING MOUNTED DEVICES, (TYPICALLY LIGHTING FIXTURES EXIT LIGHTS, WIRELESS TRANSMITTERS, CAMERAS, SMOKE DETECTORS, SPEAKERS, ETC.) UNLESS NOTED OTHERWISE IN DEMOLITION NOTES, CEILING DEVICES ARE TO REMAIN. RETAIN REMOVED DEVICES AND CLEAN, REPAIR OR REPLACE FOR RE-USE AS IS PRACTICAL.
  - LIGHTING, POWER, & DATA - CONTRACTOR MAY REUSE EXISTING CONDUIT AND WIRING TO THE EXTENT POSSIBLE IN PROVIDING A COMPLETE AND OPERABLE SYSTEM. CONTRACTOR IS TO PROVIDE ALL LABOR & MATERIALS, INCLUDING BUT NOT LIMITED TO DEVICES, BOXES, CONDUIT, AND WIRING FROM ALL DEVICES TO APPROPRIATE DISTRIBUTION CONTROL PANEL IN ORDER TO PROVIDE A COMPLETE AND OPERABLE SYSTEM. CONTRACTOR TO FIELD VERIFY ALL EXISTING QUANTITIES AND LOCATIONS & COORDINATE CLOSELY WITH OWNER.
  - E.C. TO TAKE CARE IN REMOVING, TAGGING, & STORING DEVICES DURING DEMO PHASE, & REPLACING DEVICES TO BE REUSED DURING NEW CONSTRUCTION PHASE. EXISTING CEILING MOUNTED DEVICES TO BE REINSTALLED AS CLOSE AS POSSIBLE TO ORIGINAL LOCATION. PROVIDE MATERIAL AND LABOR FOR EXTENDING CONDUIT & WIRING, AS REQUIRED, FOR REINSTALLATION. ENSURE PROPER OPERATION AFTER CONSTRUCTION.
  - WHERE RECEPTACLES ARE REMOVED, ELECTRICAL CONTRACTOR TO REMOVE EXISTING RECEPTACLE DEVICE, BOX, CONDUIT AND WIRING BACK TO IT'S SOURCE. WHERE CIRCUIT FEEDING RECEPTACLE TO BE REMOVED ALSO FEEDS RECEPTACLES THAT ARE TO REMAIN, ELECTRICAL CONTRACTOR SHALL PROVIDE CONDUIT, WIRING AND BOXES AS REQUIRED TO RE-FEED EXISTING RECEPTACLES AS REQUIRED, FOR PROPER OPERATION. SEE INSTALLATION DRAWINGS AND PANEL SCHEDULES FOR ADDITIONAL CIRCUITING INFORMATION.
  - WHERE LIGHTING FIXTURES AND ASSOCIATED SWITCHING ARE REMOVED, ELECTRICAL CONTRACTOR TO REMOVE EXISTING FIXTURE, SWITCH, SWITCH BOX, CONDUIT AND WIRING BACK TO IT'S SOURCE. WHERE CIRCUIT FEEDING FIXTURE(S) TO BE REMOVED ALSO FEEDS FIXTURE(S) THAT ARE TO REMAIN, ELECTRICAL CONTRACTOR SHALL PROVIDE CONDUIT, WIRING AND BOXES AS REQUIRED TO RE-FEED EXISTING FIXTURE(S), AS REQUIRED, FOR PROPER OPERATION. SEE INSTALLATION DRAWINGS AND PANEL SCHEDULES FOR ADDITIONAL CIRCUITING INFORMATION.
  - WHERE JB'S, PULL BOXES, CONDUIT, OR OTHER ELECTRICAL DEVICES ARE FOUND WITH WIRING AND WITHOUT COVERS, E.C. TO PROVIDE COVERS, AND/OR CAPS, WHERE JB'S, PULL BOXES, CONDUIT, OR OTHER ELECTRICAL DEVICES ARE FOUND WITHOUT WIRING, E.C. TO REMOVE BACK TO SOURCE OR NEAREST POPULATED JUNCTION.

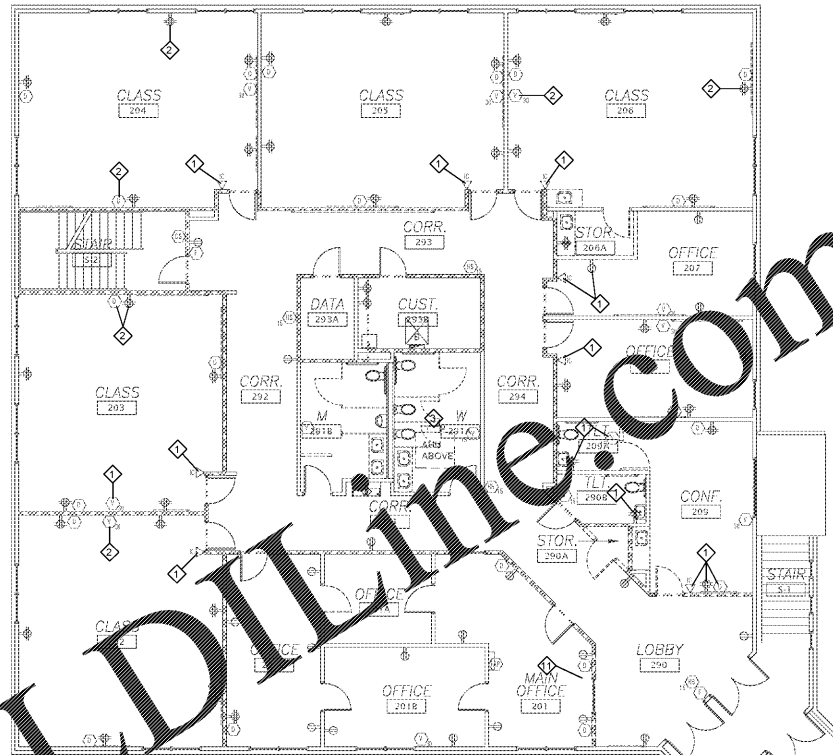
**EXISTING BUILDING NOTES**

- WHERE INDICATED REMOVE ALL CONDUIT, WIRING, AND ELECTRICAL EQUIPMENT, INCLUDING PREVIOUSLY ABANDONED, RENDERED USELESS BY CONSTRUCTION.
- EXISTING WIRING, DEVICES, ELECTRICAL PANELS, ETC., ARE SHOWN LIGHTER AND DASHED.
- EXISTING WIRING AND RACEWAYS TO BE REUSED WHERE POSSIBLE OR PRACTICAL, AND EXISTING WIRING IS FOUND TO BE IN GOOD CONDITION; REPLACE ANY EXISTING WIRING FOUND TO BE IN POOR CONDITION. ALL NEW INSTALLATIONS SHALL USE NEW WIRE, TYPICAL.
- ALL MATERIALS REMOVED AND NOT TO BE REUSED ARE TO BE DISPOSED OF PER OWNER'S INSTRUCTIONS.
- ALL FIXTURES ARE 120V UNLESS INDICATED OTHERWISE BY CIRCUIT DESIGNATOR.
- COORDINATE LOCATIONS OF EXISTING AIR HANDLER DISCONNECT, RELOCATE THOSE AFFECTED BY WALL DEMOLITION. COORDINATE NEW LOCATIONS WITH ARCHITECT OR OWNER.
- IN CORRIDORS, RESTROOMS & OTHER AREAS WHERE EGRESS LIGHTING MAY BE REQUIRED, COORDINATE WITH LIGHTING PLANS. FIXTURES THAT MAY NEED TO BE RE-WIRED TO MEET CODE EGRESS REQUIREMENTS.
- COORDINATE REPLACEMENT OF EXISTING SWITCHES TO OCCUPANCY SENSOR SWITCHES WITH NEW SWITCHING LIGHT PLANS.

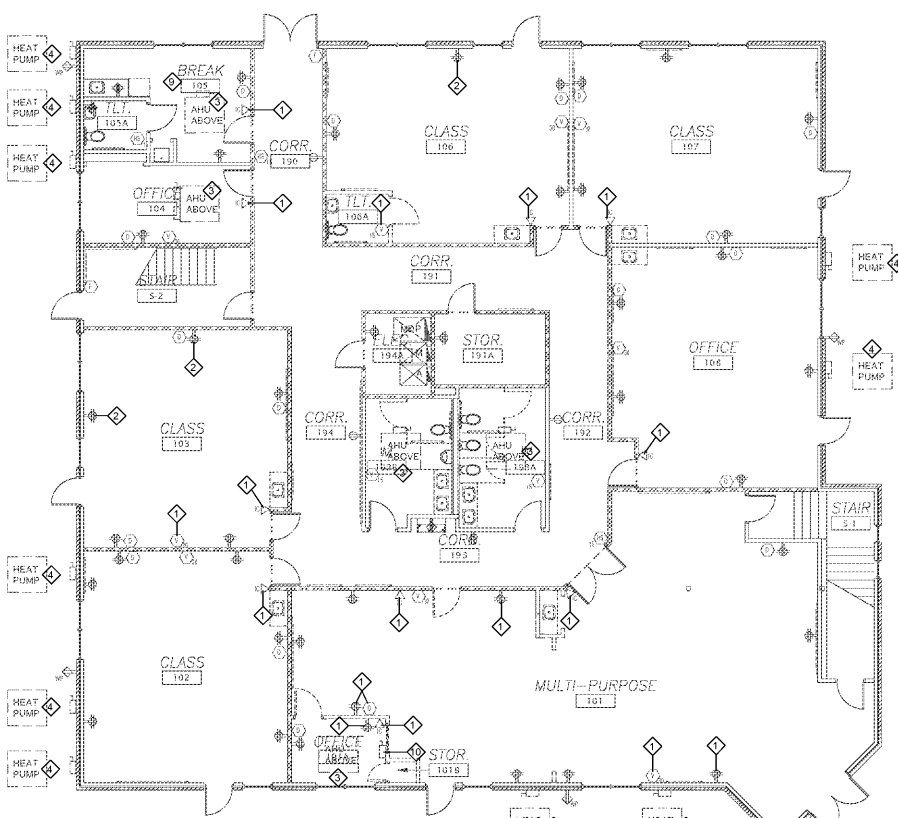
**ELECTRICAL DEMOLITION NOTES**

- NOTES TO THIS SHEET ONLY:
- REMOVE EXISTING ELECTRICAL DEVICES & CONDUIT TO BE RE-USED IF APPLICABLE. IF RE-USED, CLEAN & REPAIR AS REQUIRED. REMOVE EXISTING WIRING & CONDUIT TO SOURCE. ANY DEVICES REMAINING ON EXISTING CIRCUIT TO BE LEFT IN PROPER OPERABLE CONDITION.
  - FIELD VERIFY EXISTING LOCATION & COORDINATE WITH NEW WALL LOCATIONS. SHIFT DOWN WALL IS POSSIBLE. IF NECESSARY, REMOVE DEVICE & KEEP FOR POSSIBLE RE-USE. REMOVE EXISTING WIRING & CONDUIT TO SOURCE. ANY DEVICES REMAINING ON EXISTING CIRCUIT TO BE LEFT IN PROPER OPERABLE CONDITION.
  - EXISTING AIR HANDLER UNIT TO BE REPLACED IN NEW LOCATION. SEE NEW ELECTRICAL POWER PLANS FOR DETAILS.
  - EXISTING HEAT PUMP UNIT TO BE REPLACED. SEE NEW ELECTRICAL POWER PLAN & NOTES FOR DETAILS.
  - THIS ROOM, EXISTING FIXTURES TO BE RE-USED. CLEAN & REPAIR OR REPLACE AS REQUIRED FOR PROPER OPERATION. RE-LAMP ALL FIXTURES. SEE NEW ELECTRICAL LIGHTING PLAN FOR POSSIBLE SWITCH/LEG REPLACEMENT.
  - THIS ROOM, EXISTING FIXTURES TO BE REMOVED FOR NEW WALL LAYOUT. SEE NEW ELECTRICAL LIGHTING PLAN FOR LAYOUT & POSSIBLE SWITCH/LEG REPLACEMENT. EXISTING FIXTURES TO BE CLEANED, RE-LAMPED, & REPAIRED OR REPLACED AS REQUIRED.
  - THIS ROOM, EXISTING FIXTURE(S) & SWITCH(LEG)(S) TO BE REMOVED. REMOVE WIRING/CONDUIT TO SOURCE. ALL EXISTING DEVICES SHARING CIRCUIT TO REMAIN IN OPERABLE CONDITION, UNLESS NOTED OTHERWISE.
  - EXISTING EXTERIOR FIXTURE TO BE REPLACED WITH NEW EMERGENCY EGRESS FIXTURE. SEE NEW LIGHTING PLAN & NOTES FOR DETAILS.
  - EXISTING RANGE OUTLET TO BE REMOVED. REMOVE WIRING/CONDUIT TO SOURCE & LABEL EXISTING BREAKER AS 'SPARE'. FIELD VERIFY LOCATION OF EXISTING OUTLET.
  - RELOCATE EXISTING DISCONNECT TO EXISTING WALL PRIOR TO DEMOLITION. EXTEND EXISTING WIRING & CONDUIT AS NECESSARY. SEE NEW ELECTRICAL PLAN FOR NEW LOCATION.
  - COORDINATE RELOCATION OF EXISTING SECURITY SYSTEM WITH OWNER PRIOR TO WORK.

SYMBOLS FOR EXISTING DEVICES ARE SIMILAR EXCEPT LIGHTER AND DASHED



**4 UPPER LEVEL - ELECTRICAL POWER & RECEPTACLE DEMOLITION PLAN**  
E201  
SCALE: 1/8"=1'-0"



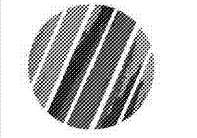
**2 LOWER LEVEL - ELECTRICAL POWER & RECEPTACLE DEMOLITION PLAN**  
E201  
SCALE: 1/8"=1'-0"

**cra**  
222 cloister court  
chapel hill, nc 27514  
919.401.8586  
www.cra-nc.com

**ARN&M**  
ENGINEERS  
Reece, Noland & McElrath, Inc.  
14 Main Street  
Canton, North Carolina 28715  
919.401.8586  
www.arnandm.com



Renovation of  
920 Corporate Drive  
Orange County Schools  
920 Corporate Drive  
Hillsborough, North Carolina



no. revisions

The use of these plans and specifications shall be restricted to the project and for which they were prepared and publication thereof by any means, in whole or in part, is prohibited. The use of these plans and specifications in any other project without the written consent of the architect is prohibited. It is to be understood that the contractor shall coordinate with these plans and specifications and coordinate with the architect at the acceptance of these specifications.

drawn JWC checked JSD

**ELECTRICAL UPPER/LOWER LEVEL DEMOLITION PLANS**

sheet  
**E201**

project no. 2019016.00

date 7.22.19