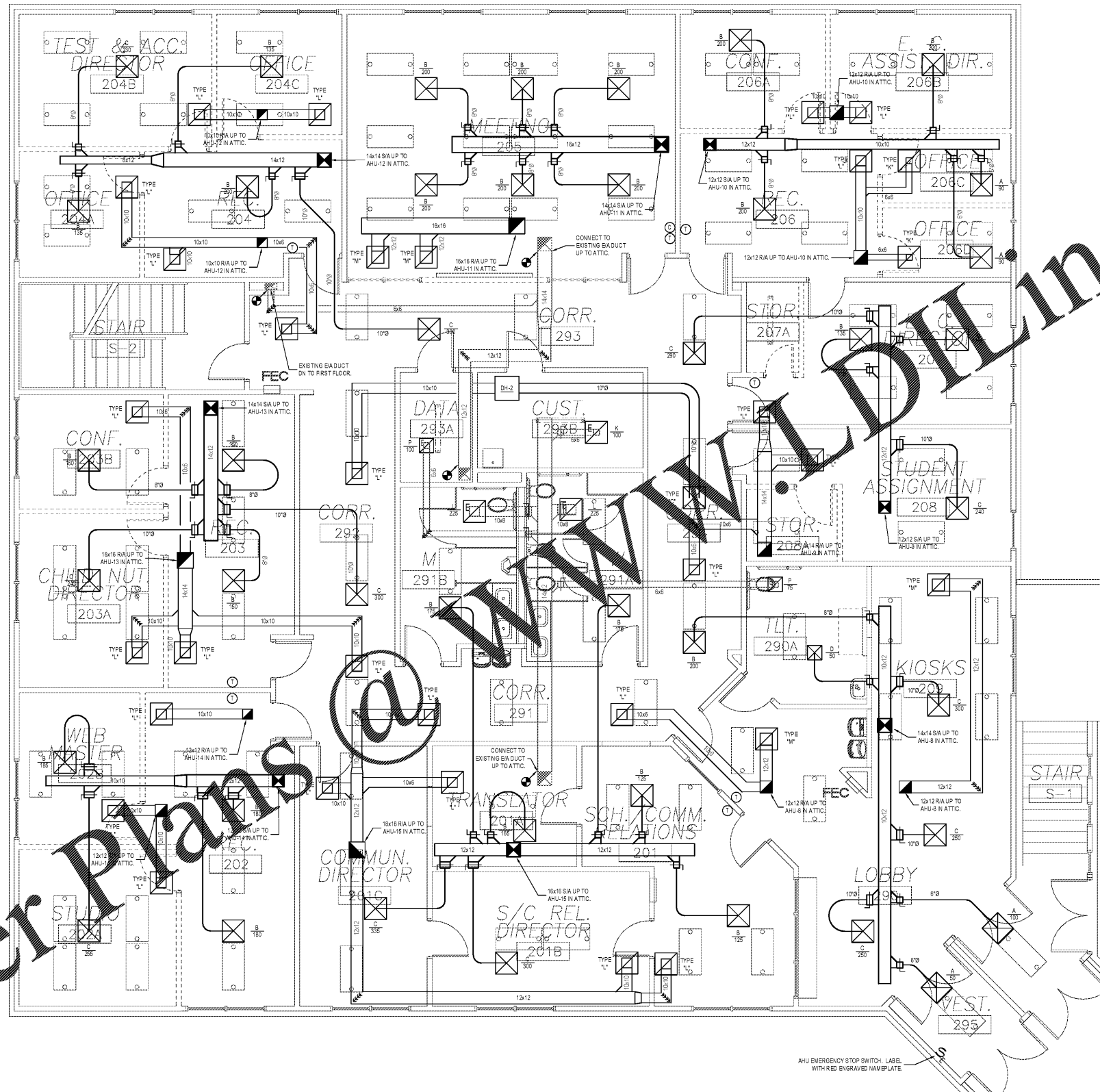
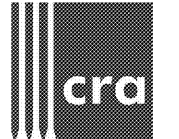


Order Plans @

WWW.DIYLINE.COM



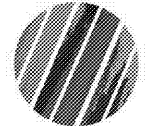
- GENERAL MECHANICAL NOTES**
- M.C. TO LABEL ALL EXISTING AND NEW PUMPS AND AIR HANDLERS WITH ENGRAVED NAMEPLATE
 - M.C. TO FLUSH ALL CONDENSATE LINES AND VERIFY THEY ARE FULLY FUNCTIONAL
 - M.C. TO FURNISH AND INSTALL CONDENSATE PUMPS WITH AHU'S. PUMP CONDENSATE TO NEAREST JANITOR SINK OR FLOOR DRAIN ON THE FIRST FLOOR AND NEAREST HUB DRAIN ON THE SECOND FLOOR.
 - M.C. TO COORDINATE NEW THERMOSTAT LOCATIONS WITH DISMOUNTABLE PARTITION SUPPLIER
 - M.C. TO REMOVE INDIVIDUAL EMERGENCY SHUTDOWN SWITCH AT EACH THERMOSTAT AND INSTALL NEW SINGLE EMERGENCY SHUTDOWN SWITCH FOR ALL AHU'S. LOCATED AT THE REFRIGERANT ANNUNCIATOR PANEL. FINISH AND INSTALL AT THE REFRIGERANT ANNUNCIATOR PANEL. FINISH AND INSTALL AT THE REFRIGERANT ANNUNCIATOR PANEL. FINISH AND INSTALL AT THE REFRIGERANT ANNUNCIATOR PANEL. FINISH AND INSTALL AT THE REFRIGERANT ANNUNCIATOR PANEL.
 - M.C. TO REPAIR EXISTING PENETRATION DEVICES THROUGH RATED ASSEMBLIES WHERE PRACTICAL
 - M.C. TO THOROUGHLY CLEAN ALL EXISTING DUCTWORK AND INTAKE COVERS PRIOR TO CONNECTION. NEW AS NECESSARY.



222 cloister court
chapel hill, nc 27514
919.401.8586
www.cra-ae.com



Renovation of
920 Corporate Drive
Orange County Schools
920 Corporate Drive
Hillsborough, North Carolina



no. revisions

The user of these plans and specifications shall be responsible for any errors or omissions that may appear hereon and shall be held liable for any damages or losses resulting therefrom. The user shall indemnify and hold harmless the architect, engineer, contractor, and subcontractors from and against all claims, damages, and expenses, including reasonable attorneys' fees, that may be asserted against them by third parties as a result of the use of these plans and specifications.

drawn DM checked RM

UPPER LEVEL
MECHANICAL
PLAN

sheet

M2.2

project no. 2019016.00

date 7.22.19

UPPER LEVEL MECHANICAL PLAN
SCALE: 1/4" = 1'-0"