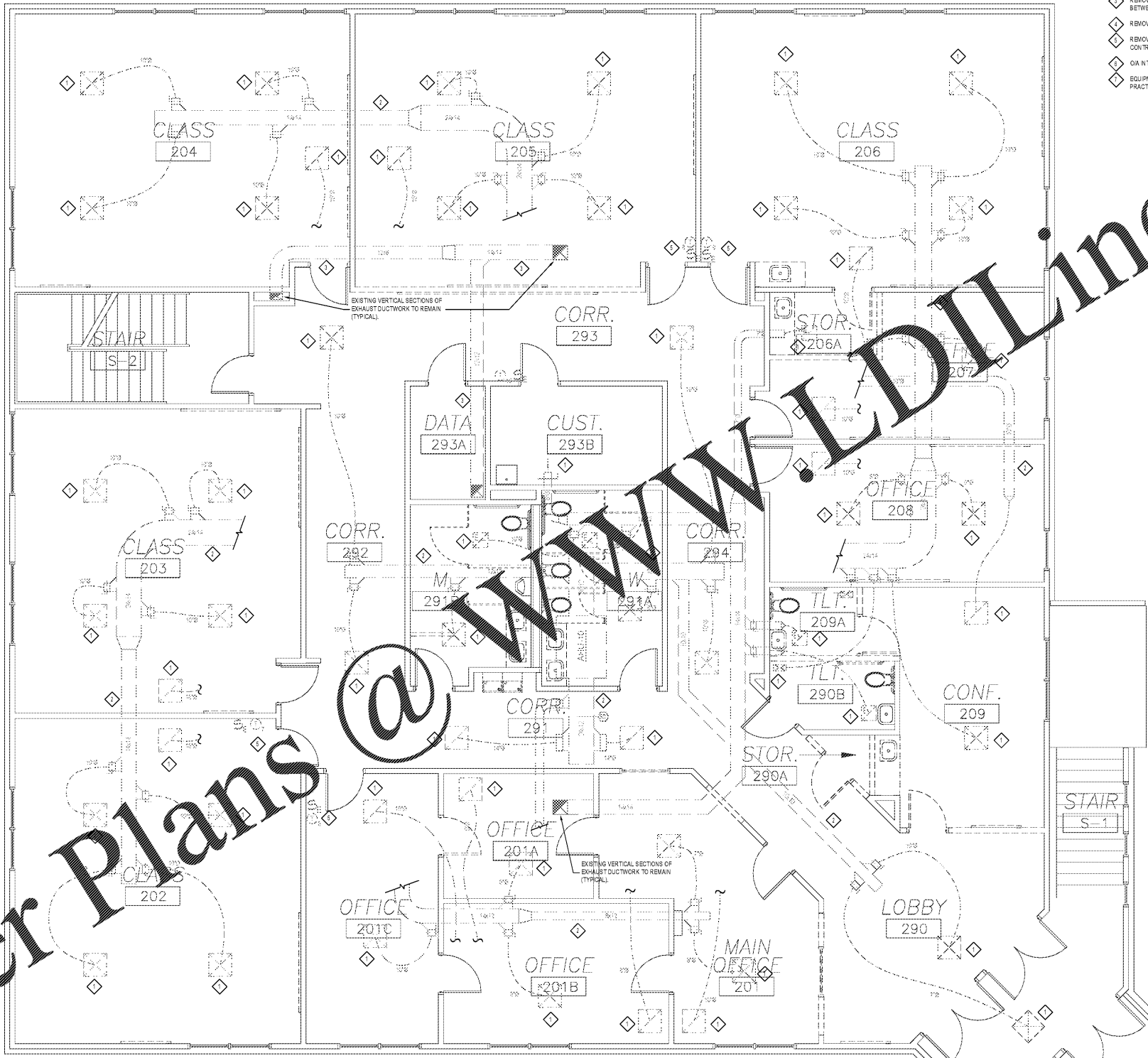
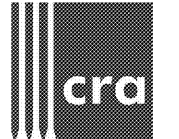


Order Plans @ [www.LDILine.com](http://www.LDILine.com)

- KEYED MECHANICAL DEMO NOTES**
- ◇ REMOVE ALL SUPPLY, RETURN, AND EXHAUST GRILLES.
  - ◇ REMOVE ALL SUPPLY AND RETURN DUCTWORK, INCLUDING FIRE DAMPERS SO G.C. CAN PATCH RATED ASSEMBLIES.
  - ◇ REMOVE HORIZONTAL EXHAUST DUCTWORK. VERTICAL DUCT RUNS BETWEEN FLOORS AND UP TO ROOF TO REMAIN.
  - ◇ REMOVE ALL OIA DUCTWORK. INTAKE LOUVERS TO REMAIN.
  - ◇ REMOVE EXISTING HEAT PUMPS, FAN COILS, THERMOSTATS, PIPING, CONTROL WIRING, AND POWER WIRING THAT IS NOT TO BE REUSED.
  - ◇ OIA INTAKE LOUVERS TO REMAIN. BE THOROUGHLY CLEANED, AND REUSED.
  - ◇ EQUIPMENT PADS FOR HEAT PUMPS TO REMAIN AND BE REUSED WHERE PRACTICAL.



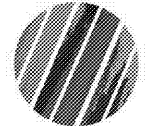
**UPPER LEVEL MECHANICAL DEMO PLAN**  
SCALE: 1/4" = 1'-0"



222 cloister court  
chapel hill, nc 27514  
919.401.8586  
www.cra-ae.com



Renovation of  
920 Corporate Drive  
Orange County Schools  
920 Corporate Drive  
Hillsborough, North Carolina



no.	revisions

The user of these plans and specifications shall be responsible for providing the contractor with all necessary information to complete the work. The contractor shall be responsible for providing the contractor with all necessary information to complete the work. The contractor shall be responsible for providing the contractor with all necessary information to complete the work.

drawn DM checked RM

**UPPER LEVEL MECHANICAL DEMO PLAN**

sheet

**M1.2**

project no. 2019016.00

date 7.22.19