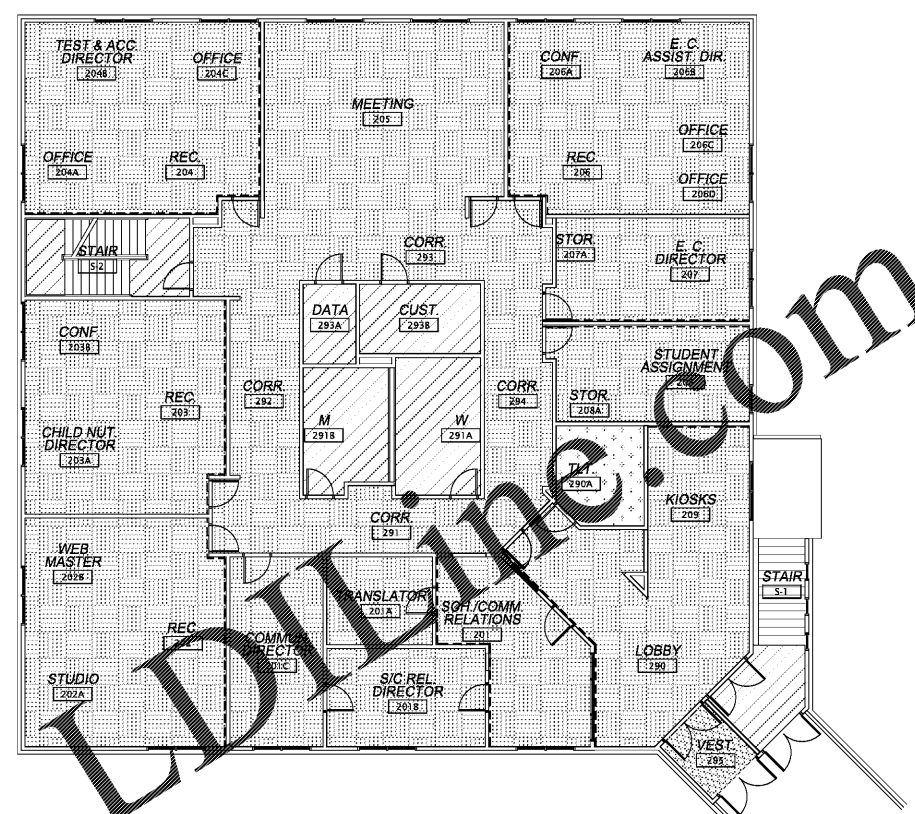


FINISH LEGEND	
	CARPET TILE 1, CPT-01
	CARPET TILE 2, CPT-02
	SHEET VINYL, SV-01
	EXISTING FLOORING TO REMAIN
	PAINT ACCENT WALL



1 Lower Level Finish Plan
A1.3 Scale: 1/8" = 1'-0"

2 Upper Level Finish Plan
A1.3 Scale: 1/8" = 1'-0"

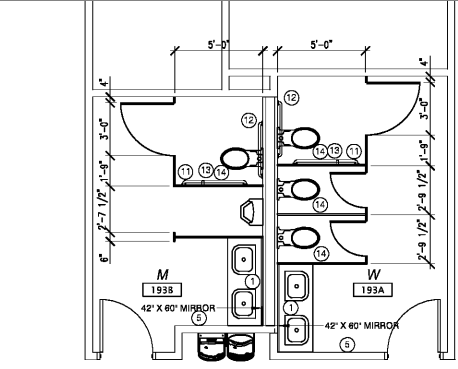
ROOM FINISH SCHEDULE

MARK	ROOM NAME	FLOOR	BASE	WALLS	CLG. TYPE	REMARKS	MARK	ROOM NAME	FLOOR	BASE	WALLS	CLG. TYPE	REMARKS
FIRST FLOOR							SECOND FLOOR						
101	STUDY AREA	CPT-01	RB-01	PT-01 / PT-02 (ACCENT)	ACT-01		201	SCH/COMM RELATIONS	CPT-01	RB-01	PT-01 / PT-04 (ACCENT)	ACT-01	
101A	MEETING ROOM	CPT-01	RB-01	PT-01 / PT-02 (ACCENT)	ACT-01		201A	TRANS. FOR SUITE	CPT-01	RB-01	PT-01	ACT-01	
102	LITERACY SPECIALISTS	CPT-01	RB-01	PT-01 / PT-02 (ACCENT)	ACT-01		201B	SIC REL DIRECTOR OFFICE	CPT-01	RB-01	PT-01	ACT-01	
103-103B	CTE OFFICE SUITE	CPT-01	RB-01	PT-01 / PT-02 (ACCENT)	ACT-01		201C	COMM. DIRECTOR	CPT-01	RB-01	PT-01	ACT-01	
104	I.T. COORDINATOR	CPT-01	RB-01	PT-01	ACT-01		202-202B	COMM. STUDIOS	CPT-01	RB-01	PT-01 / PT-02 (ACCENT)	ACT-01	
105-105A	BREAK ROOM	EXISTING TO REMAIN	EXISTING TO REMAIN	PT-01	ACT-01		203-203B	CHILD NUT SUITE	CPT-01	RB-01	PT-01 / PT-02 (ACCENT)	ACT-01	
106-106B	CH. ACAD. OFFICE SUITE	CPT-01	RB-01	PT-01 / PT-02 (ACCENT)	ACT-01		204-204C	MEETING SUITE	CPT-01	RB-01	PT-01 / PT-02 (ACCENT)	ACT-01	
107-107B	EX. DIR. OFFICE SUITE	CPT-01	RB-01	PT-01 / PT-02 (ACCENT)	ACT-01		205	MEETING ROOM	CPT-01	RB-01	PT-01	ACT-01	
108-108B	A. D. OFFICE SUITE	CPT-01	RB-01	PT-01 / PT-02 (ACCENT)	ACT-01		206-206D	EXC. CH. OFFICE SUITE	CPT-01	RB-01	PT-01 / PT-02 (ACCENT)	ACT-01	
108-108A	STUD. SUPP. SERV. OFFICE	CPT-01	RB-01	PT-01 / PT-02 (ACCENT)	ACT-01		207-207A	EXC. CH. DIRECTOR SUITE	CPT-01	RB-01	PT-01 / PT-02 (ACCENT)	ACT-01	
109	CORRIDOR	CPT-01 / CPT-02	RB-01	PT-01	ACT-01		208	STUD. ASSGN. SUITE	CPT-01	RB-01	PT-01 / PT-02 (ACCENT)	ACT-01	
191	CORRIDOR	CPT-01	RB-01	PT-01	ACT-01		209	KIOSKS	CPT-01	RB-01	PT-01 / PT-04 (ACCENT)	ACT-01	
191A	STORAGE	EXISTING TO REMAIN	EXISTING TO REMAIN	PT-01	ACT-01		200	CORRIDOR	CPT-01	RB-01	PT-01 / PT-04 (ACCENT)	ACT-01	
192	CORRIDOR	CPT-01	RB-01	PT-01	ACT-01		209A	TOILET ROOM	SV-01	RB-01	PT-03	ACT-01	
193	CORRIDOR	CPT-01	RB-01	PT-01	ACT-01		281	CORRIDOR	CPT-01	RB-01	PT-01	ACT-01	
193A	WOMEN	SV-01	RB-01	PT-03	ACT-01		291A	WOMEN	EXISTING TO REMAIN	EXISTING TO REMAIN	PT-03	ACT-01	
193B	MEN	SV-01	RB-01	PT-03	ACT-01		291B	MEN	EXISTING TO REMAIN	EXISTING TO REMAIN	PT-03	ACT-01	
194	CORRIDOR	CPT-01	RB-01	PT-01	ACT-01		292	CORRIDOR	CPT-01	RB-01	PT-01	ACT-01	
194A	ELECTRICAL ROOM	EXISTING TO REMAIN	EXISTING TO REMAIN	PT-01	ACT-01		293	CORRIDOR	CPT-01	RB-01	PT-01	ACT-01	
S-1	STAIR 1	EXISTING TO REMAIN	EXISTING TO REMAIN	PT-01	PT-01 ALL STRUCTURE	NOTE #1	293A	DATA ROOM	EXISTING TO REMAIN	EXISTING TO REMAIN	PT-01	PT-01	
S-2	STAIR 2	EXISTING TO REMAIN	EXISTING TO REMAIN	PT-01	PT-01 ALL STRUCTURE	NOTE #1	293B	CUSTODIAL ROOM	EXISTING TO REMAIN	EXISTING TO REMAIN	PT-01	ACT-01	
NOTE #1 - PAINT ALL EXISTING METAL NOSINGS, RISERS AND RAILINGS.							S-1 STAIR 1 EXISTING TO REMAIN EXISTING TO REMAIN PT-01 PT-01 ALL STRUCTURE NOTE #1						
S-2 STAIR 2 EXISTING TO REMAIN EXISTING TO REMAIN PT-01 PT-01 ALL STRUCTURE NOTE #1							S-2 STAIR 2 EXISTING TO REMAIN EXISTING TO REMAIN PT-01 PT-01 ALL STRUCTURE NOTE #1						

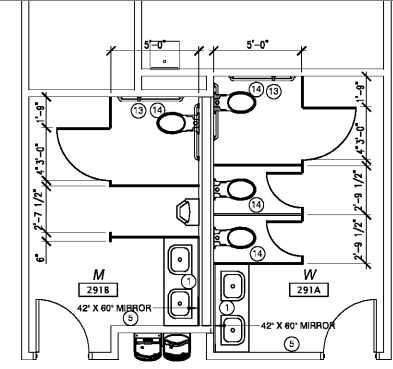
INTERIOR FINISH MATERIAL LEGEND

REF.	MATERIALS & FINISH	CLASSIFICATION
ACT-01	ARMSTRONG CEILINGS-789 CORTEGA CEILING TILE, 24" X 48" X 5/8" WITH SQUARE EDGE, COLOR: WHITE	CLASS A
CPT-01	CARPET TILE: SHAW CONTRACT GROUP; TILE STYLE: TBD; COLOR: TBD (INSTALL IN BRICK PATTERN)	CLASS A
CPT-02	CARPET TILE: SHAW CONTRACT GROUP; TILE STYLE: TBD; COLOR: TBD (INSTALL IN MONOLITHIC PATTERN)	CLASS A
PL-01	PLASTIC LAMINATE COUNTERTOP - WILSONART, TBD	CLASS A
PL-02	PLASTIC LAMINATE COUNTERTOP - WILSONART, TBD	CLASS A
PT-01	PAINT: SHERWIN WILLIAMS PRO MAR 200 ZERO VOC EGG-SHELL, TBD	CLASS A
PT-02	PAINT: SHERWIN WILLIAMS ALL SURFACE ENAMEL (H.M. FRAMES), TBD	CLASS A
PT-03	PAINT: SHERWIN WILLIAMS PRO MAR 200 ZERO VOC FLAT (CEILINGS), TBD	CLASS A
PT-04	PAINT: SHERWIN WILLIAMS PRO MAR 200 ZERO VOC EGG-SHELL, TBD	CLASS A
PT-05	PAINT: SHERWIN WILLIAMS PRO MAR 200 ZERO VOC EGG-SHELL, TBD	CLASS A
PT-06	PAINT: SHERWIN WILLIAMS PRO MAR 200 ZERO VOC EGG-SHELL, TBD	CLASS A
RB-01	ARMSTRONG RUBBER BASE; EDGE WALL BASE, COVDED, 4" HIGH; COLOR: TBD	CLASS A
SV-01	ARMSTRONG DECORART REJUVENATIONS CLASSICS; COLOR: TBD	CLASS A

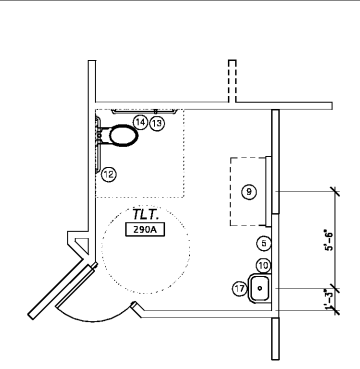
- Order Plans**
- NECESSARY SCHEDULE
- WALL MOUNTED SOAP DISPENSER (BY OWNER)
 - ROBE HOOK (NOT USED)
 - MOP & BROOM HOLDER (NOT USED)
 - HAND DRYERS (NOT USED)
 - SURFACE MOUNTED TOWEL DISPENSER (BY OWNER)
 - SURFACE MOUNTED SANITARY NAPKIN DISPENSER (NOT USED)
 - SHOWER GRAB BARS (NOT USED)
 - COMPACT FOLDING SHOWER SEAT (NOT USED)
 - CHANGING STATION
 - SURFACE MOUNTED MIRROR WITH TRIM
 - 42" LONG 1 1/4" DIA. WALL MOUNTED GRAB BAR
 - 36" LONG 1 1/4" DIA. WALL MOUNTED GRAB BAR
 - 18" LONG 1 1/4" DIA. WALL MOUNTED GRAB BAR
 - MULTI-ROLL TOILET TISSUE DISPENSER (BY OWNER)
 - HEAVY DUTY SHOWER ROD (NOT USED)
 - SHOWER CURTAIN (NOT USED)
 - UNDER LAVATORY GUARDS



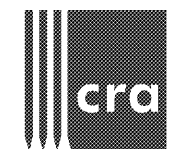
5 Women 193A / Men 193B
A1.3 Scale: 1/4" = 1'-0"



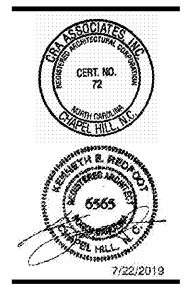
4 Women 291A / Men 291B
A1.3 Scale: 1/4" = 1'-0"



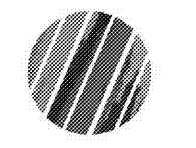
3 Toilet Room 290A
A1.3 Scale: 1/4" = 1'-0"



222 cloister court
chapel hill, nc 27514
919.401.8586
www.cra-nc.com



Renovation of
920 Corporate Drive
Orange County Schools
920 Corporate Drive
Hillsborough, North Carolina



no. revisions

The use of these plans and specifications shall be restricted to the original site for which they were prepared and no liability shall be assumed by the architect for any use, reproduction, or publication by any other party without the prior written consent of the architect. The architect shall not be held responsible for any errors or omissions in these plans and specifications and shall assume no liability for any damage or injury resulting from the use of these plans and specifications.

drawn checked

Finish Schedule and Finish Plans

sheet

A1.3

project no. 1905

date 7/22/19